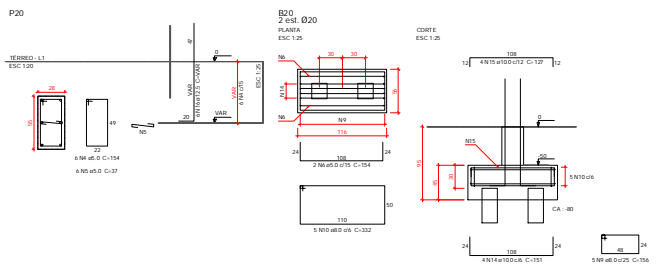


Relação do aço

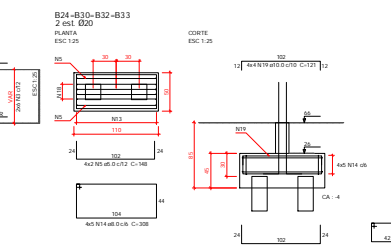
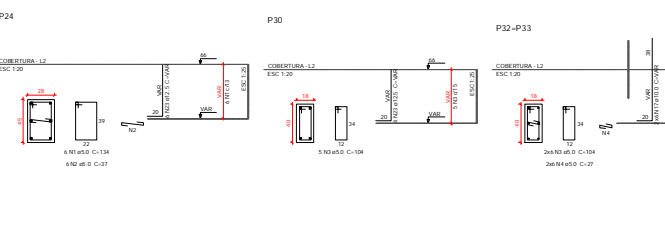
ACD	N	DIAM	L	UNT	C TOTAL
CAD0	1	5,0	4	124	744
CAD0	2	5,0	7	148	1096
CAD0	3	5,0	24	148	3648
CAD0	4	5,0	4	124	504
CAD0	5	5,0	4	37	222
CAD0	6	5,0	7	148	1096
CAD0	7	8,0	65	144	9500
CAD0	8	8,0	45	208	20200
CAD0	9	8,0	5	32	1600
CAD0	10	8,0	5	145	7250
CAD0	11	8,0	5	127	6350
CAD0	12	10,0	52	145	7540
CAD0	13	10,0	4	127	5080
CAD0	14	10,0	4	131	404
CAD0	15	10,0	4	127	5080
CAD0	16	12,5	30	VAR	VAR
CAD0	17	12,5	3	VAR	VAR



Resumo do aço

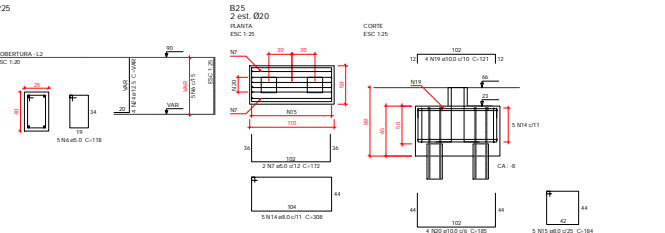
ACD	DIAM	C TOTAL	PESO - 10 %
CAD0	8,0	3182	130,1
CAD0	10,0	81	30,4
CAD0	12,5	304	84,2
CAD0	30	120,4	22,2
PESO TOTAL			187,0
CAD0	Ø47		
CAD0	Ø47		

Vol. de concreto total (C-25) = 4,25 m³
 Área da forma total = 23,82 m²



Relação do aço

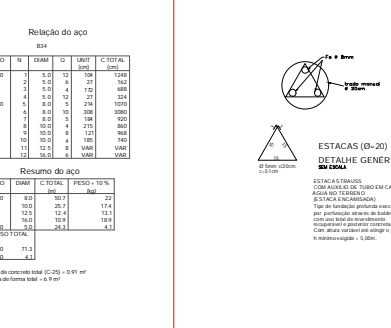
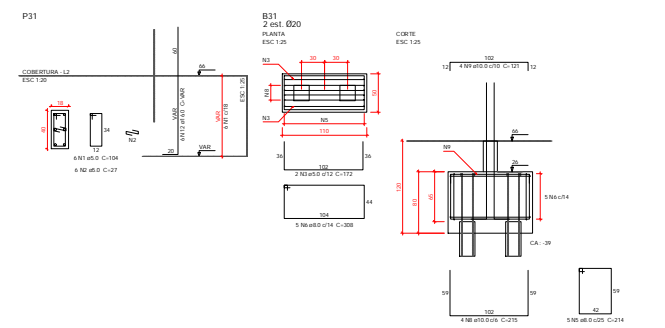
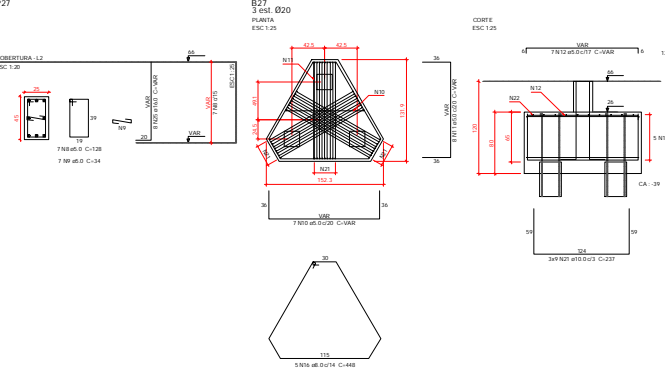
ACD	N	DIAM	L	UNT	C TOTAL
CAD0	1	5,0	4	134	654
CAD0	2	5,0	4	37	232
CAD0	3	5,0	17	104	1348
CAD0	4	5,0	12	27	254
CAD0	5	5,0	8	148	1184
CAD0	6	5,0	5	118	590
CAD0	7	5,0	7	172	344
CAD0	8	5,0	7	138	690
CAD0	9	5,0	7	VAR	VAR
CAD0	10	5,0	7	VAR	VAR
CAD0	11	5,0	7	VAR	VAR
CAD0	12	5,0	7	VAR	VAR
CAD0	13	8,0	20	144	2880
CAD0	14	8,0	20	308	7700
CAD0	15	8,0	1	184	352
CAD0	16	8,0	5	448	2240
CAD0	17	8,0	12	VAR	VAR
CAD0	18	10,0	30	145	2220
CAD0	19	10,0	20	127	2540
CAD0	20	10,0	4	135	540
CAD0	21	10,0	27	630	6300
CAD0	22	10,0	10	VAR	VAR
CAD0	23	12,5	10	VAR	VAR
CAD0	24	12,5	4	VAR	VAR
CAD0	25	12,5	4	VAR	VAR
CAD0	26	12,5	4	VAR	VAR



Resumo do aço

ACD	DIAM	C TOTAL	PESO - 10 %
CAD0	8,0	146,7	58,6
CAD0	10,0	146,3	58,5
CAD0	12,5	121	47,4
CAD0	15,0	95	37,4
CAD0	18,0	106,2	41,8
PESO TOTAL			243,3
CAD0	18x2		
CAD0	Ø47		

Vol. de concreto total (C-25) = 2,78 m³
 Área da forma total = 17,39 m²



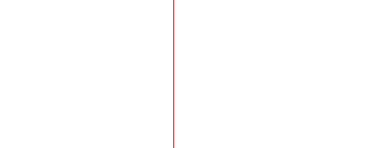
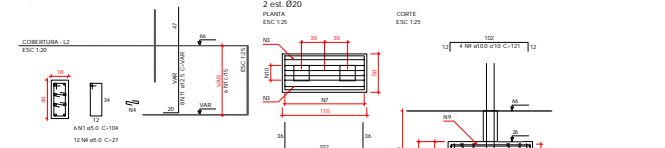
Relação do aço

ACD	N	DIAM	L	UNT	C TOTAL
CAD0	1	5,0	12	129	1248
CAD0	2	5,0	4	27	542
CAD0	3	5,0	4	172	858
CAD0	4	5,0	12	27	254
CAD0	5	8,0	10	228	1820
CAD0	6	8,0	10	228	3630
CAD0	7	8,0	6	138	860
CAD0	8	8,0	4	215	860
CAD0	9	8,0	4	135	740
CAD0	10	8,0	4	135	740
CAD0	11	12,5	8	VAR	VAR
CAD0	12	12,5	8	VAR	VAR

Resumo do aço

ACD	DIAM	C TOTAL	PESO - 10 %
CAD0	8,0	86,7	33,7
CAD0	10,0	20,7	17,4
CAD0	12,5	4,4	15,1
CAD0	15,0	10,9	18,9
CAD0	18,0	0,3	0,3
PESO TOTAL			79,4
CAD0	Ø47		

Vol. de concreto total (C-25) = 0,91 m³
 Área da forma total = 4,9 m²



Relação do aço

ACD	N	DIAM	L	UNT	C TOTAL
CAD0	1	5,0	12	129	1248
CAD0	2	5,0	4	27	542
CAD0	3	5,0	4	172	858
CAD0	4	5,0	12	27	254
CAD0	5	8,0	10	228	1820
CAD0	6	8,0	10	228	3630
CAD0	7	8,0	6	138	860
CAD0	8	8,0	4	215	860
CAD0	9	8,0	4	135	740
CAD0	10	8,0	4	135	740
CAD0	11	12,5	8	VAR	VAR
CAD0	12	12,5	8	VAR	VAR



ESTACAS (Ø-20)
DETALHE GENCICO

ESTACA C/3 BRACOS
 COM TUBULO DE TUBO EM CASO DE EXISTENCIA
 AQUEL NO TERRAPLO
 Ø 20 A 40 ANCHURAS
 Tipo de fundação profunda executada
 por perfuração direta de fundo rotativo
 com uso de água para amolecimento
 dos agregados e posterior concretagem.
 Com uma camada de 100 P por cima de rego
 e isolamento acústico = 5,00m.