

Relação do aço

ACAO	N	DIAM	D	UNID	C TOTAL
S1	200	54			
S6	510	54			
CAO	1	5,0	39	104	3744
	2	5,0	4	124	496
	3	8,0	14	88	1222
	4	8,0	34	108	1728
	5	8,0	16	110	1664
	6	8,0	12	128	1536
	7	8,0	23	103	2264
	8	8,0	12	122	1584
	9	8,0	12	130	1656
	10	8,0	12	130	1656
	11	12,5	4	VAR	VAR
	12	12,5	12	VAR	VAR
	13	12,5	4	VAR	VAR
	14	12,5	4	VAR	VAR
	15	12,5	4	VAR	VAR

Resumo do aço

CAO	DIAM	C TOTAL	PESO - 10%
CAO	8,0	1415	42,1
CAO	12,5	36,3	10,4
CAO	5,0	46,4	7,2
CAO	12,5	7,4	

Vol. de concreto total (C-20) = 1,34 m<sup>3</sup>  
Área de forma total = 12,77 m<sup>2</sup>

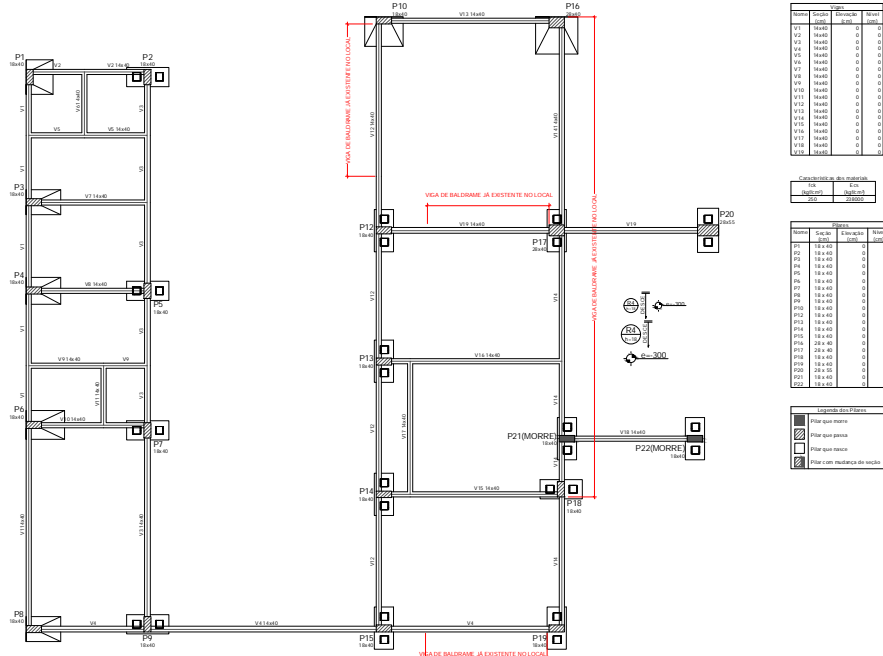
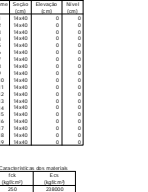
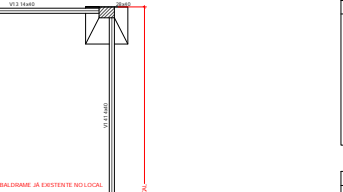
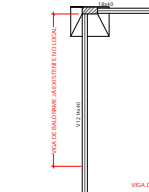
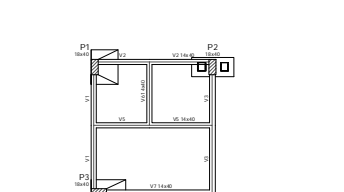
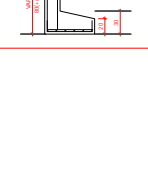
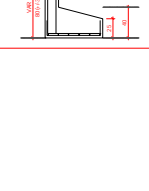
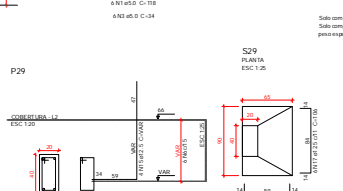
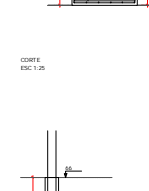
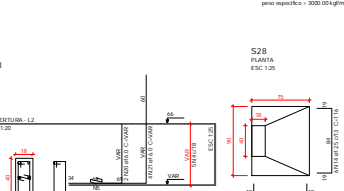
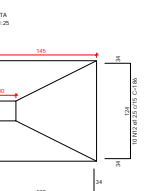
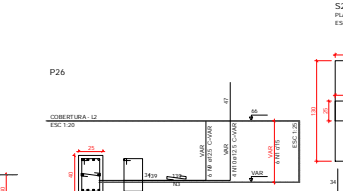
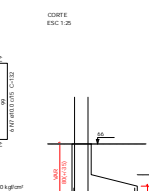
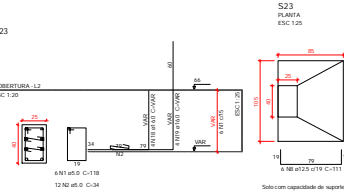
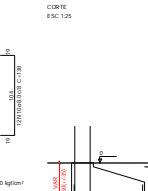
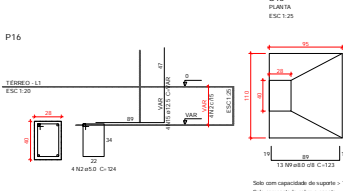
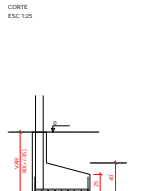
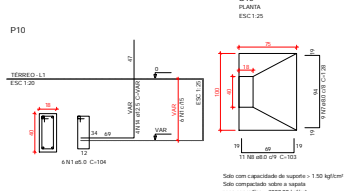
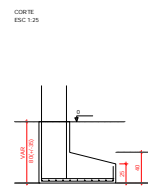
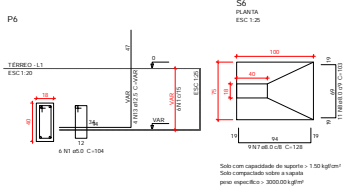
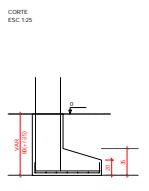
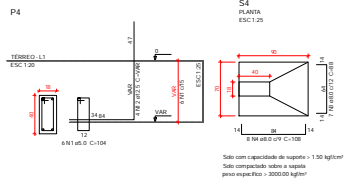
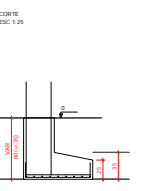
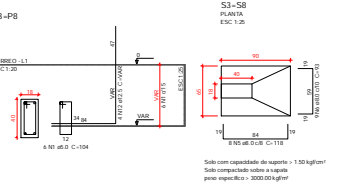
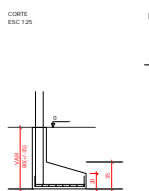
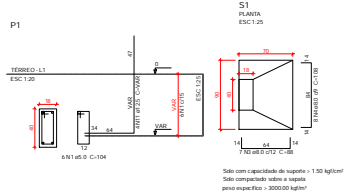
Relação do aço

ACAO	N	DIAM	D	UNID	C TOTAL
S23	100	54			
S26	526	54			
S29	529	54			
CAO	3	5,0	12	133	1414
	4	5,0	12	34	406
	5	5,0	4	24	204
	6	5,0	8	108	432
	7	5,0	8	27	135
	8	5,0	6	108	432
	9	5,0	6	132	528
	10	5,0	6	131	524
	11	12,5	9	VAR	VAR
	12	12,5	10	VAR	VAR
	13	12,5	10	VAR	VAR
	14	12,5	6	VAR	VAR
	15	12,5	6	VAR	VAR
	16	12,5	6	VAR	VAR
	17	12,5	6	VAR	VAR
	18	12,5	6	VAR	VAR
	19	12,5	6	VAR	VAR
	20	12,5	2	VAR	VAR
	21	12,5	2	VAR	VAR

Resumo do aço

CAO	DIAM	C TOTAL	PESO - 10%
CAO	10,0	8	3,4
CAO	12,5	46,3	14,1
CAO	16,0	24,8	4,7
CAO	5,0	24,1	3,8
CAO	15,4		
CAO	8,0		

Vol. de concreto total (C-20) = 1,97 m<sup>3</sup>  
Área de forma total = 9,24 m<sup>2</sup>



Item	Descrição	Unid	Qtd
V1	VAR	0	0,0
V2	VAR	0	0,0
V3	VAR	0	0,0
V4	VAR	0	0,0
V5	VAR	0	0,0
V6	VAR	0	0,0
V7	VAR	0	0,0
V8	VAR	0	0,0
V9	VAR	0	0,0
V10	VAR	0	0,0
V11	VAR	0	0,0
V12	VAR	0	0,0
V13	VAR	0	0,0
V14	VAR	0	0,0
V15	VAR	0	0,0
V16	VAR	0	0,0
V17	VAR	0	0,0
V18	VAR	0	0,0
V19	VAR	0	0,0
V20	VAR	0	0,0
V21	VAR	0	0,0
V22	VAR	0	0,0
V23	VAR	0	0,0
V24	VAR	0	0,0
V25	VAR	0	0,0
V26	VAR	0	0,0
V27	VAR	0	0,0
V28	VAR	0	0,0
V29	VAR	0	0,0
V30	VAR	0	0,0
V31	VAR	0	0,0
V32	VAR	0	0,0
V33	VAR	0	0,0
V34	VAR	0	0,0
V35	VAR	0	0,0
V36	VAR	0	0,0
V37	VAR	0	0,0
V38	VAR	0	0,0
V39	VAR	0	0,0
V40	VAR	0	0,0
V41	VAR	0	0,0
V42	VAR	0	0,0
V43	VAR	0	0,0
V44	VAR	0	0,0
V45	VAR	0	0,0
V46	VAR	0	0,0
V47	VAR	0	0,0
V48	VAR	0	0,0
V49	VAR	0	0,0
V50	VAR	0	0,0
V51	VAR	0	0,0
V52	VAR	0	0,0
V53	VAR	0	0,0
V54	VAR	0	0,0
V55	VAR	0	0,0
V56	VAR	0	0,0
V57	VAR	0	0,0
V58	VAR	0	0,0
V59	VAR	0	0,0
V60	VAR	0	0,0
V61	VAR	0	0,0
V62	VAR	0	0,0
V63	VAR	0	0,0
V64	VAR	0	0,0
V65	VAR	0	0,0
V66	VAR	0	0,0
V67	VAR	0	0,0
V68	VAR	0	0,0
V69	VAR	0	0,0
V70	VAR	0	0,0
V71	VAR	0	0,0
V72	VAR	0	0,0
V73	VAR	0	0,0
V74	VAR	0	0,0
V75	VAR	0	0,0
V76	VAR	0	0,0
V77	VAR	0	0,0
V78	VAR	0	0,0
V79	VAR	0	0,0
V80	VAR	0	0,0
V81	VAR	0	0,0
V82	VAR	0	0,0
V83	VAR	0	0,0
V84	VAR	0	0,0
V85	VAR	0	0,0
V86	VAR	0	0,0
V87	VAR	0	0,0
V88	VAR	0	0,0
V89	VAR	0	0,0
V90	VAR	0	0,0
V91	VAR	0	0,0
V92	VAR	0	0,0
V93	VAR	0	0,0
V94	VAR	0	0,0
V95	VAR	0	0,0
V96	VAR	0	0,0
V97	VAR	0	0,0
V98	VAR	0	0,0
V99	VAR	0	0,0
V100	VAR	0	0,0

Item	Descrição	Unid	Qtd
P1	18,0x14,0	0	0,0
P2	18,0x14,0	0	0,0
P3	18,0x14,0	0	0,0
P4	18,0x14,0	0	0,0
P5	18,0x14,0	0	0,0
P6	18,0x14,0	0	0,0
P7	18,0x14,0	0	0,0
P8	18,0x14,0	0	0,0
P9	18,0x14,0	0	0,0
P10	18,0x14,0	0	0,0
P11	18,0x14,0	0	0,0
P12	18,0x14,0	0	0,0
P13	18,0x14,0	0	0,0
P14	18,0x14,0	0	0,0
P15	18,0x14,0	0	0,0
P16	18,0x14,0	0	0,0
P17	18,0x14,0	0	0,0
P18	18,0x14,0	0	0,0
P19	18,0x14,0	0	0,0
P20	18,0x14,0	0	0,0
P21	18,0x14,0	0	0,0
P22	18,0x14,0	0	0,0
P23	18,0x14,0	0	0,0
P24	18,0x14,0	0	0,0
P25	18,0x14,0	0	0,0
P26	18,0x14,0	0	0,0
P27	18,0x14,0	0	0,0
P28	18,0x14,0	0	0,0
P29	18,0x14,0	0	0,0
P30	18,0x14,0	0	0,0
P31	18,0x14,0	0	0,0
P32	18,0x14,0	0	0,0
P33	18,0x14,0	0	0,0
P34	18,0x14,0	0	0,0
P35	18,0x14,0	0	0,0
P36	18,0x14,0	0	0,0
P37	18,0x14,0	0	0,0
P38	18,0x14,0	0	0,0
P39	18,0x14,0	0	0,0
P40	18,0x14,0	0	0,0
P41	18,0x14,0	0	0,0
P42	18,0x14,0	0	0,0
P43	18,0x14,0	0	0,0
P44	18,0x14,0	0	0,0
P45	18,0x14,0	0	0,0
P46	18,0x14,0	0	0,0
P47	18,0x14,0	0	0,0
P48	18,0x14,0	0	0,0
P49	18,0x14,0	0	0,0
P50	18,0x14,0	0	0,0
P51	18,0x14,0	0	0,0
P52	18,0x14,0	0	0,0
P53	18,0x14,0	0	0,0
P54	18,0x14,0	0	0,0
P55	18,0x14,0	0	0,0
P56	18,0x14,0	0	0,0
P57	18,0x14,0	0	0,0
P58	18,0x14,0	0	0,0
P59	18,0x14,0	0	0,0
P60	18,0x14,0	0	0,0
P61	18,0x14,0	0	0,0
P62	18,0x14,0	0	0,0
P63	18,0x14,0	0	0,0
P64	18,0x14,0	0	0,0
P65	18,0x14,0	0	0,0
P66	18,0x14,0	0	0,0
P67	18,0x14,0	0	0,0
P68	18,0x14,0	0	0,0
P69	18,0x14,0	0	0,0
P70	18,0x14,0	0	0,0
P71	18,0x14,0	0	0,0
P72	18,0x14,0	0	0,0
P73	18,0x14,		