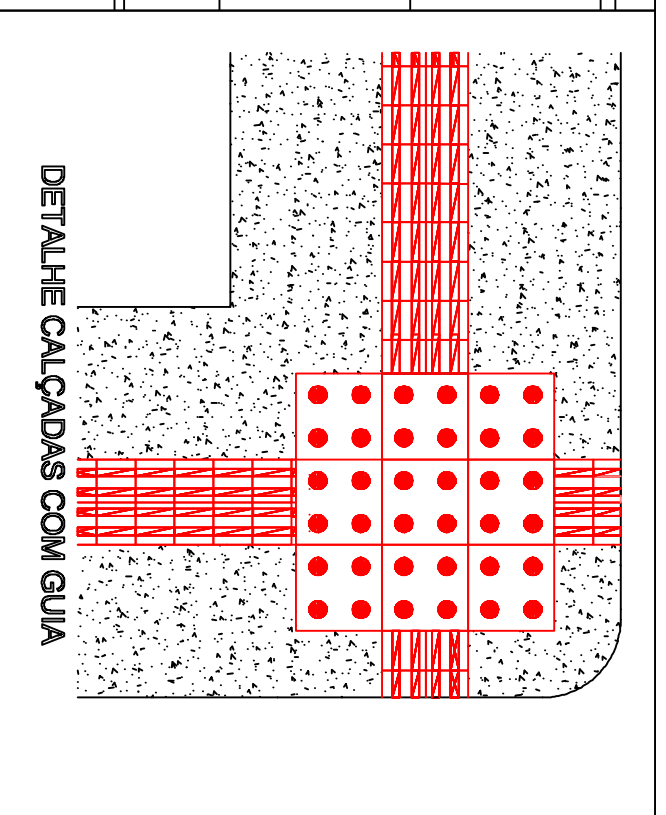
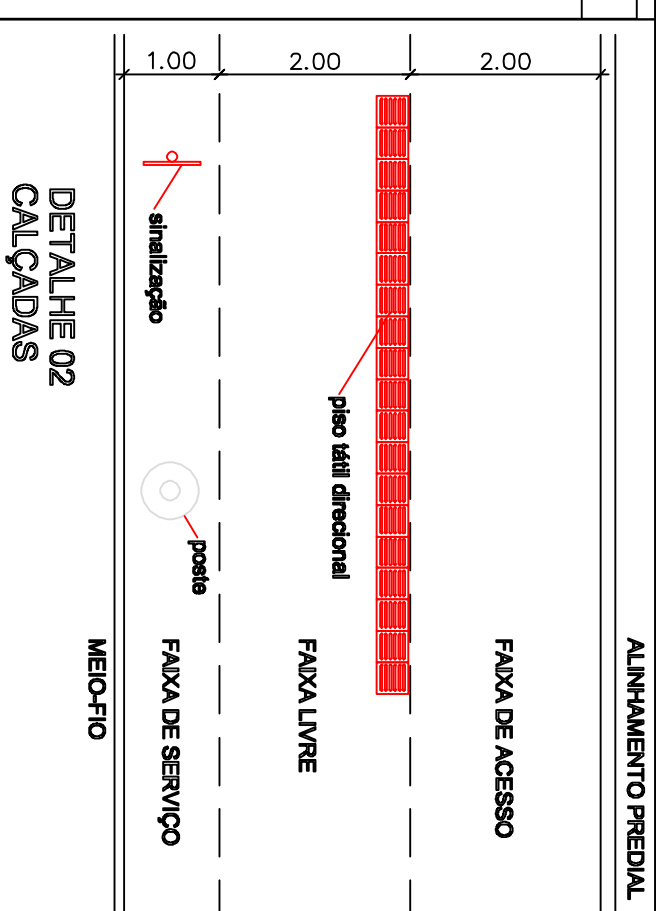
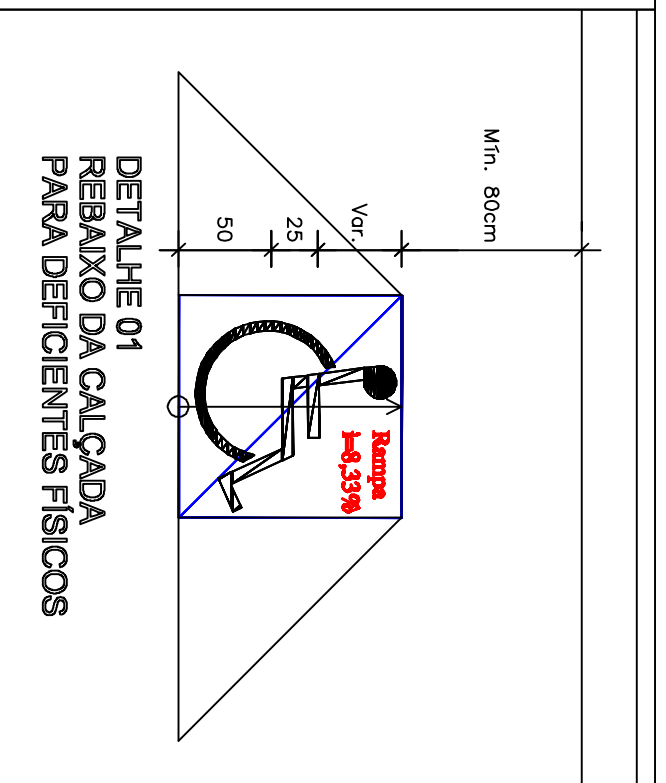
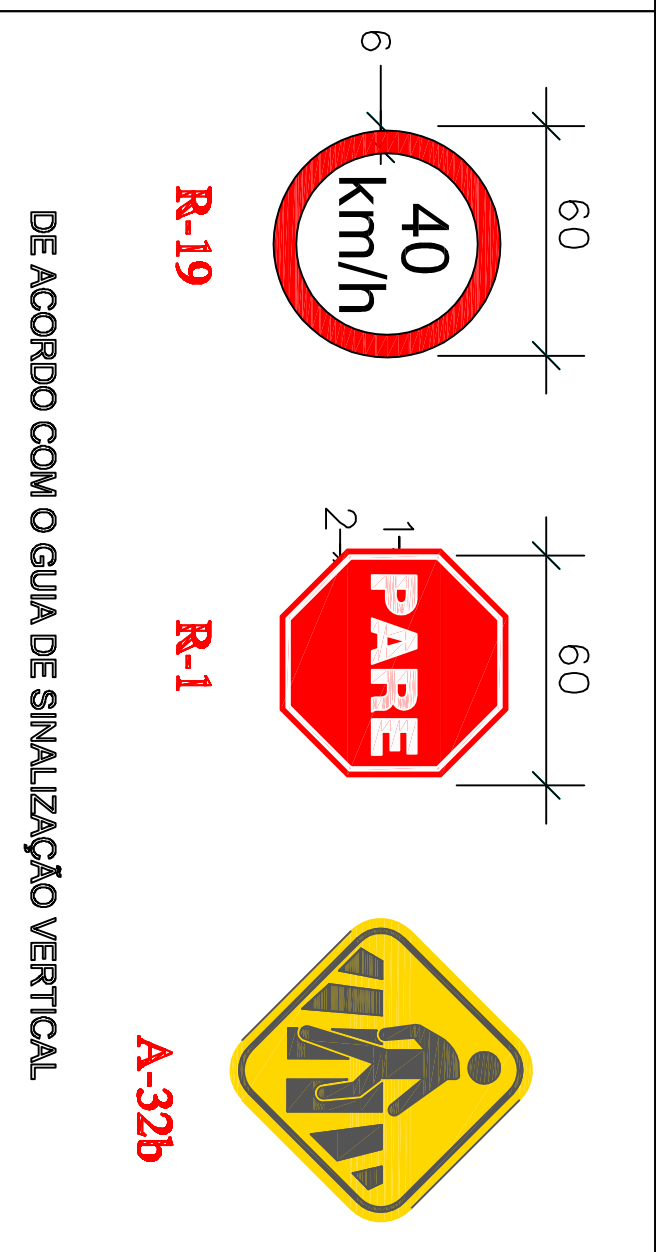
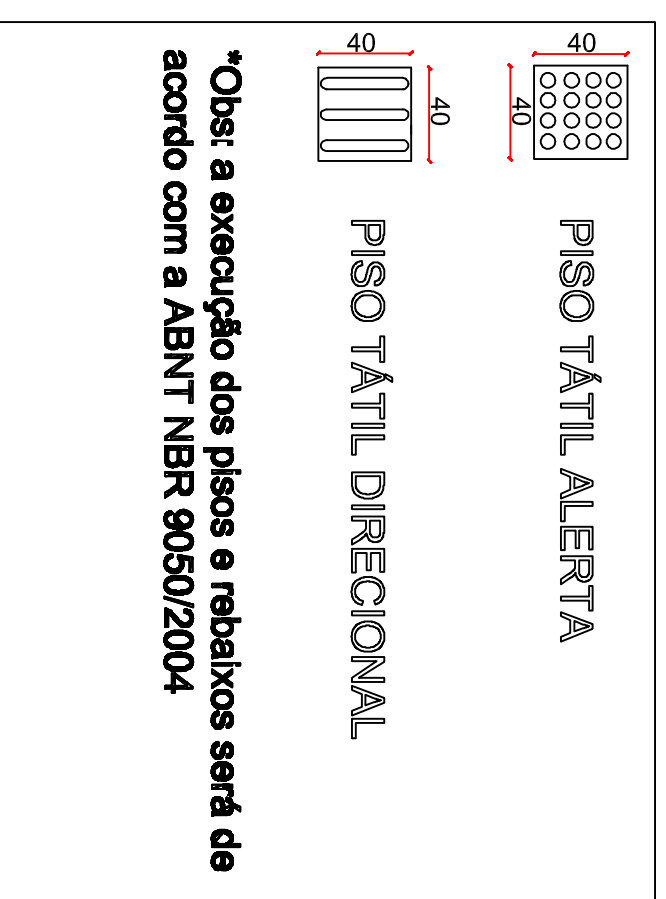


PLANTA - DRENAGEM  
Esc.: 1/300



Faixa de sinalização horizontal sobre piso de concreto com l=10cm, comprimento=5m e largura variável

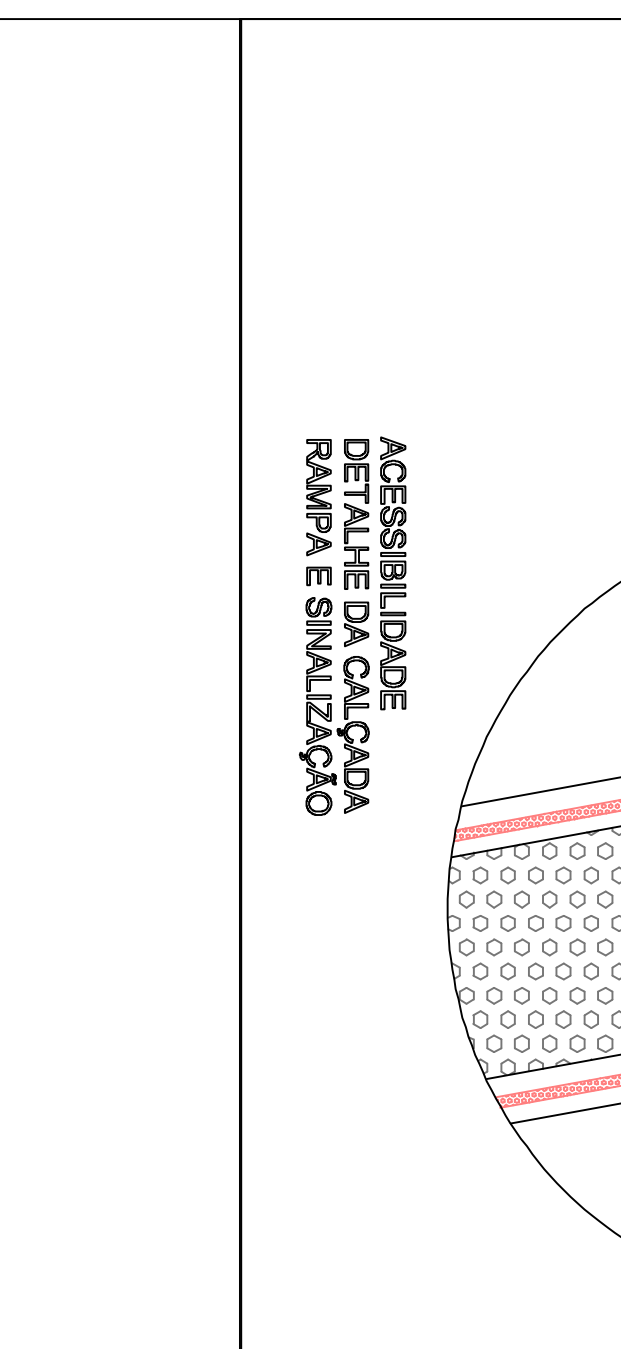
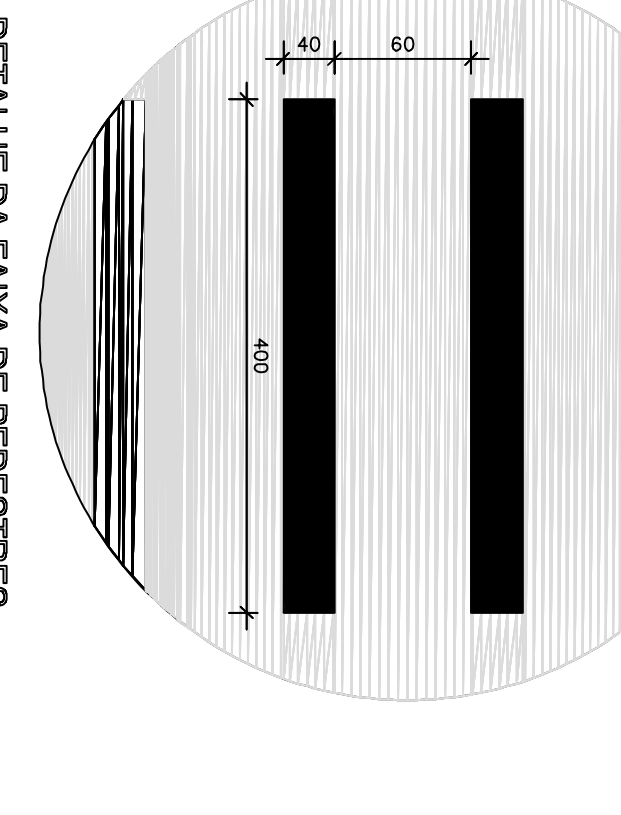
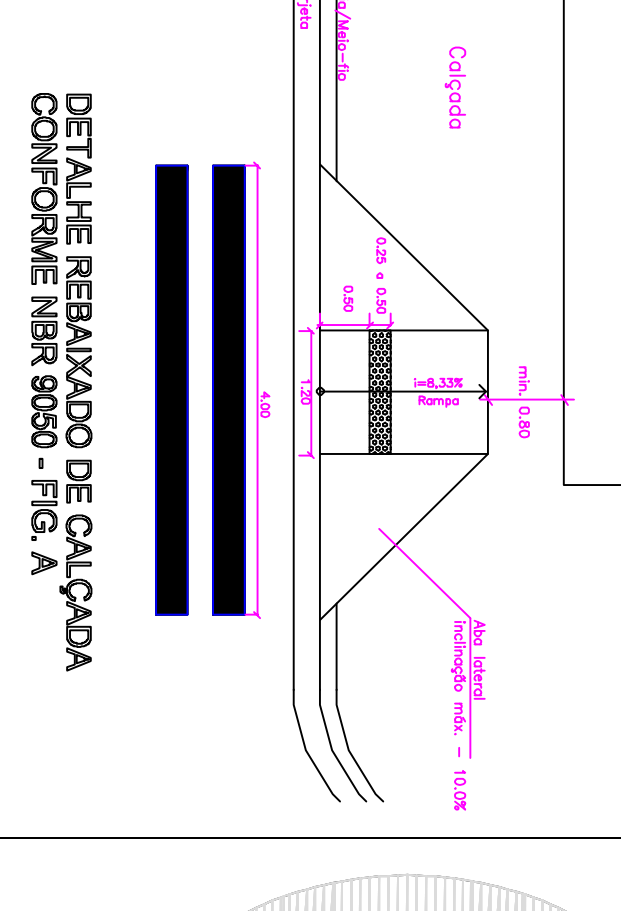
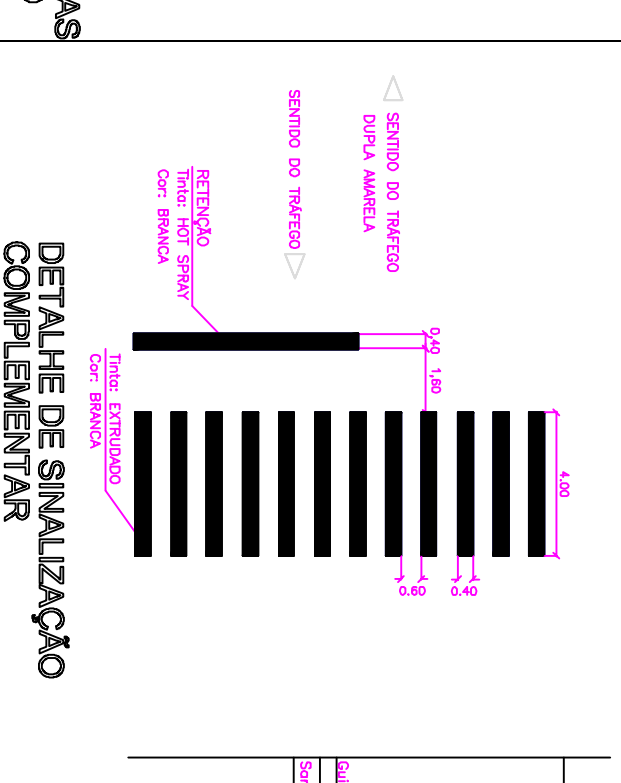
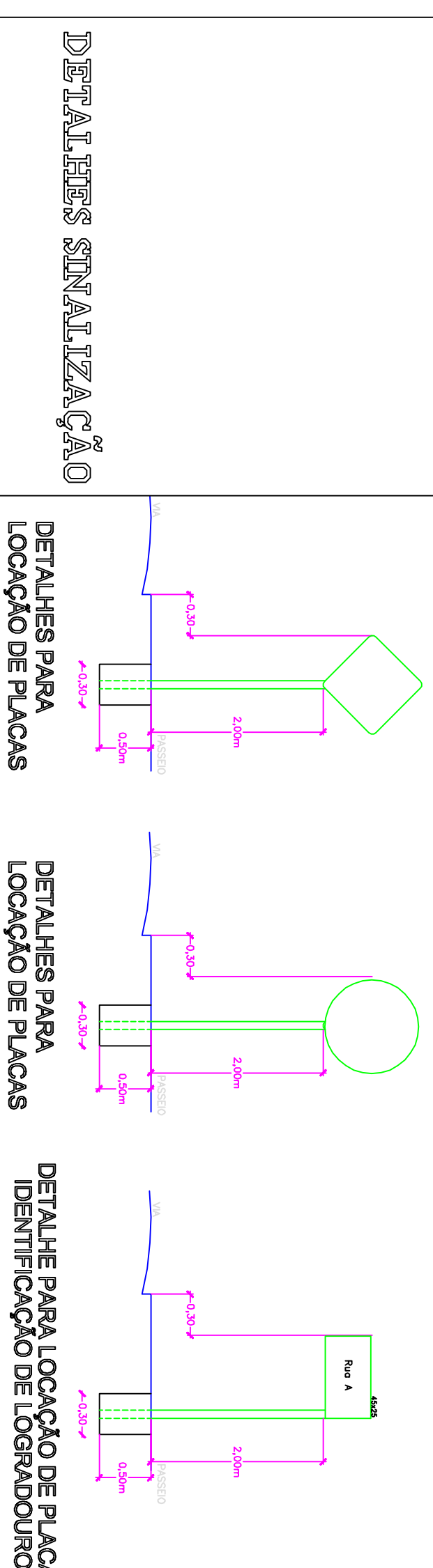
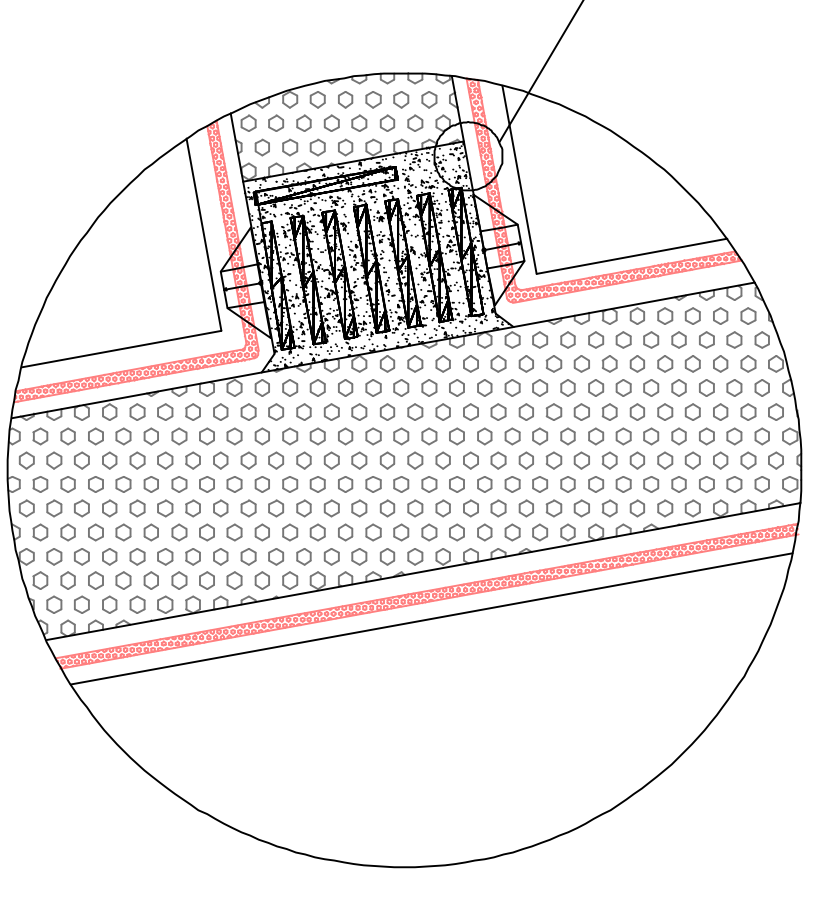


TABELA DE CONVENÇÕES

|                             |                            |                     |
|-----------------------------|----------------------------|---------------------|
| RIO-RIBEIRÃO-VALO-TALVEGUE  | MARCO                      | CAÇADA PROJETADA    |
| INDICAÇÕES DE EDIFICAÇÃO    | POSTE                      | BORDO PROJETADO     |
| MURO DE ALVENARIA           | PONTO DE ÔNIBUS            | CANTIEIRO PROJETADO |
| CERCA DE ARAME              | CURVAS DE NIVEL MESTRAS    | NORTE GEOGRÁFICO    |
| EIXO PROJETADO              | CURVAS DE NIVEL AUXILIARES |                     |
| BORDOS E ACESSOS EXISTENTES | TUBULAÇÃO EXISTENTE        |                     |
| BORDOS PROJETADOS           | VALA EXISTENTE             |                     |

GOVERNO DO ESTADO DE SANTA CATARINA

PREFEITURA MUNICIPAL DE IRINEÓPOLIS  
DEPARTAMENTO DE ENG. CIVIL

OBRA: PAVIMENTAÇÃO RUA PARÁ TRECHO SANTA CATARINA / ARROIO

PRANCHA: PROJETO SINALIZAÇÃO

ESCALA: INDICADA

Desenhistas: Eng. Marcelo / Eng. Augusto

DATA: SET / 2017

ESTACA: opp - 9 + 12

PRANCHA:

03/08