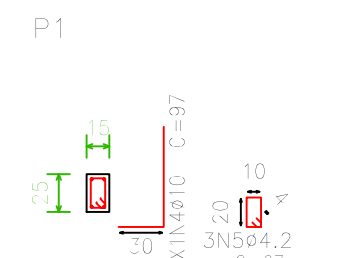
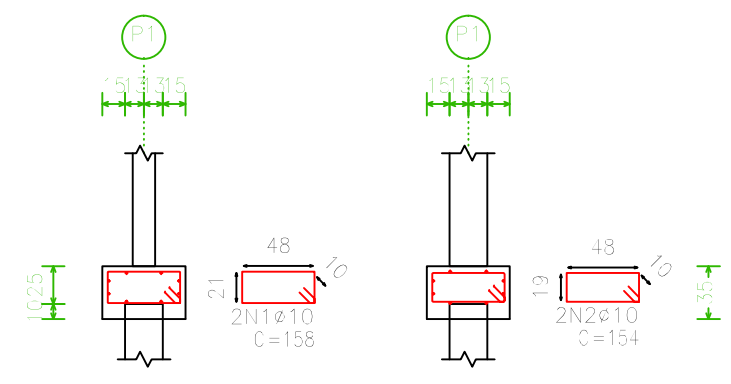
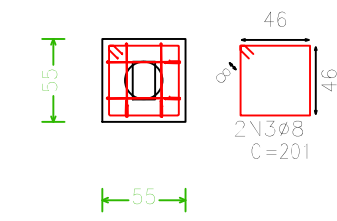


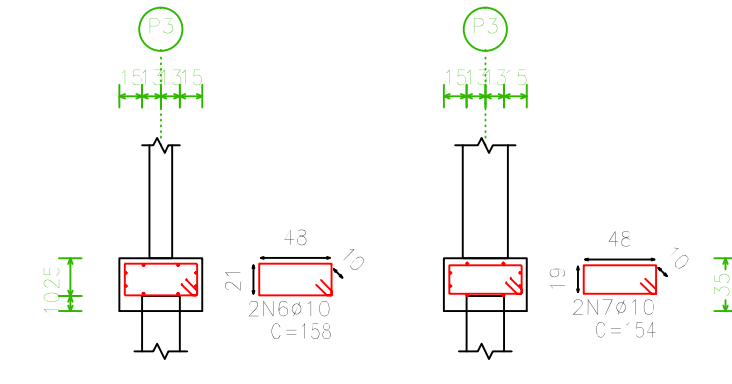
P1, P2, P4, P6, P27, P28 e P29



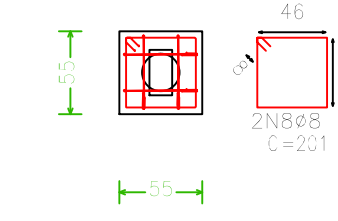
Estacas: Broca



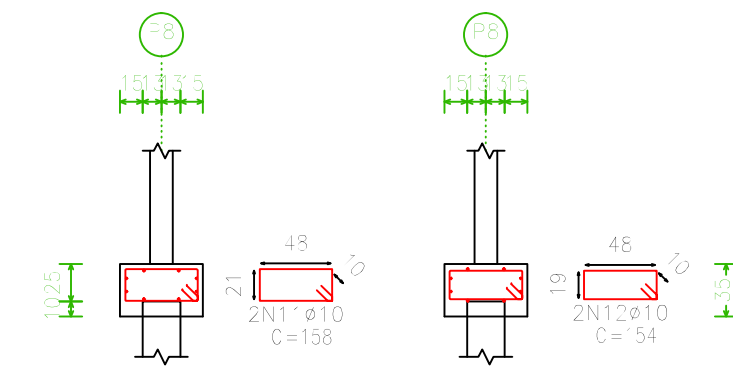
P3, P5, P24 e P25



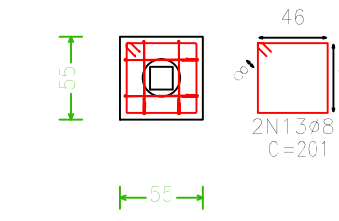
Estacas: Broca



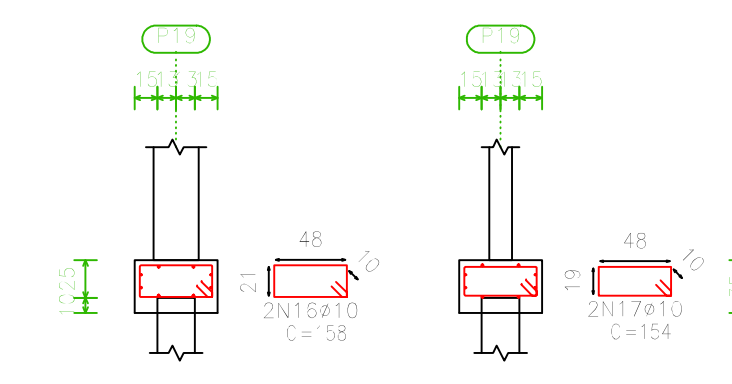
P8, P9, P10, P11, P12, P13, P14, P15, P16, P17 e P18



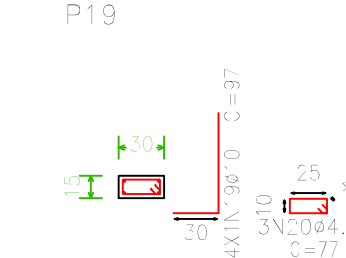
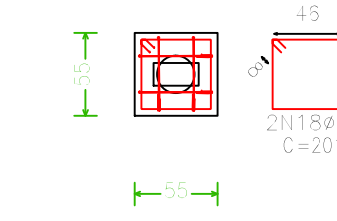
Estacas: Broca



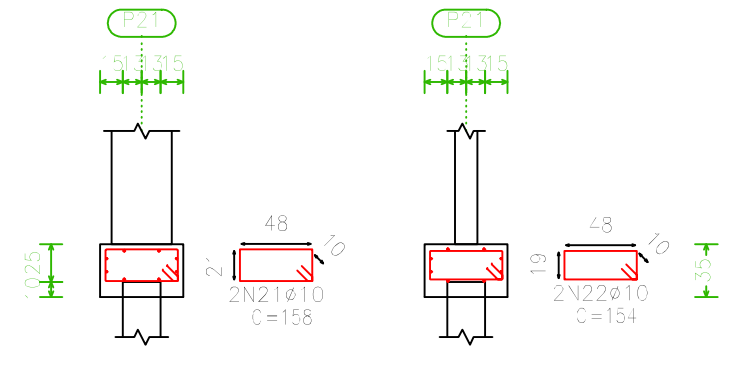
P19, P20, P23 e P26



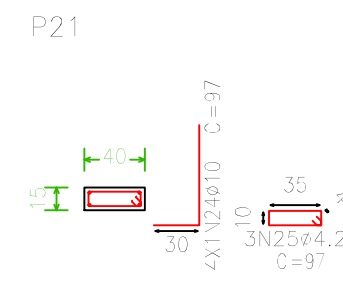
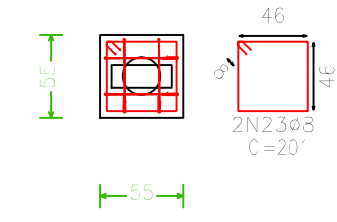
Estacas: Broca



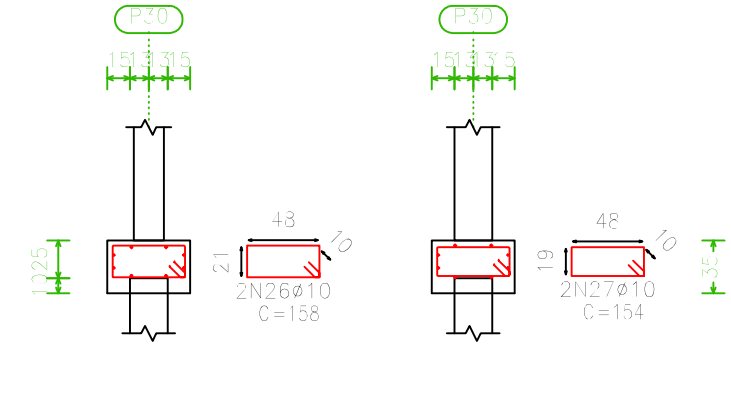
P21 e P22



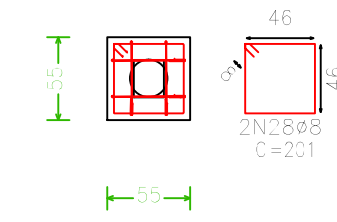
Estacas: Broca



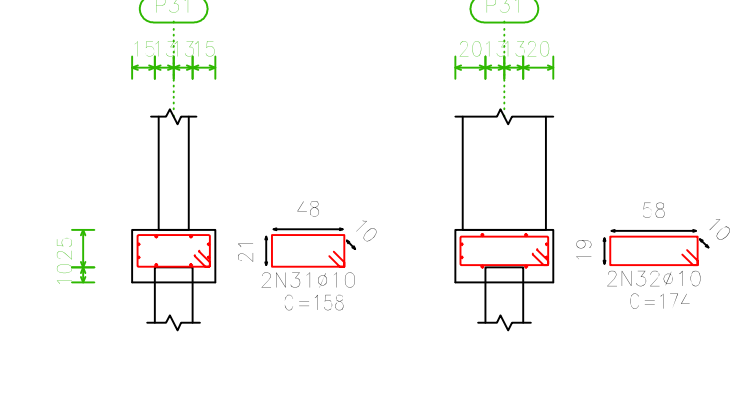
P30



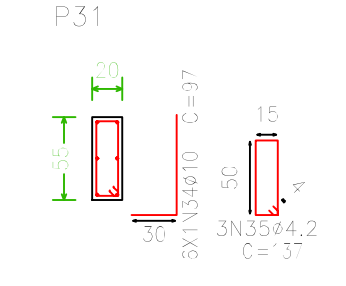
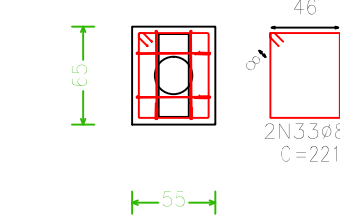
Estacas: Broca



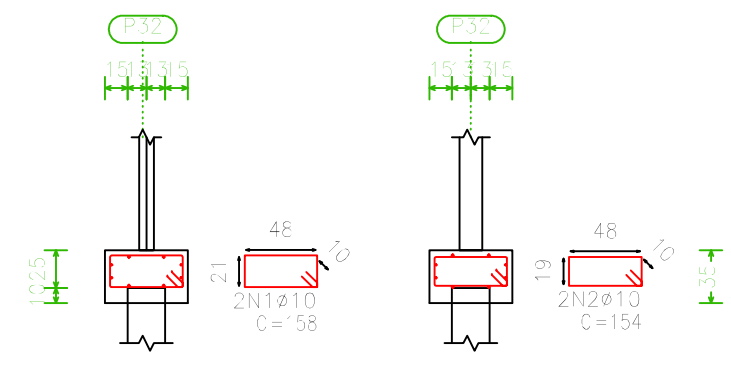
P31



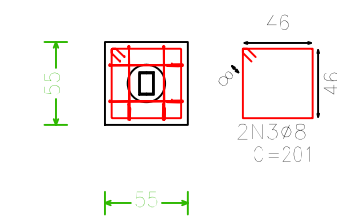
Estacas: Broca



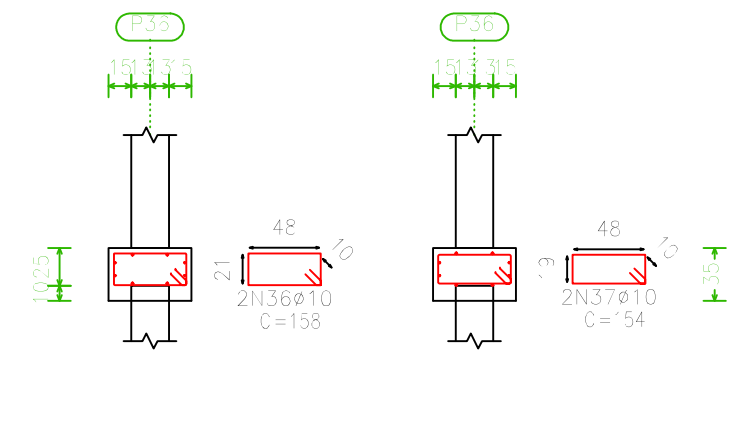
P32, P33, P34 e P35



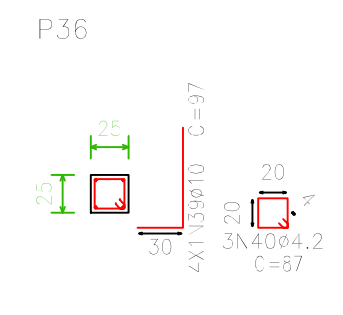
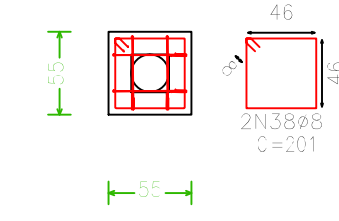
Estacas: Broca



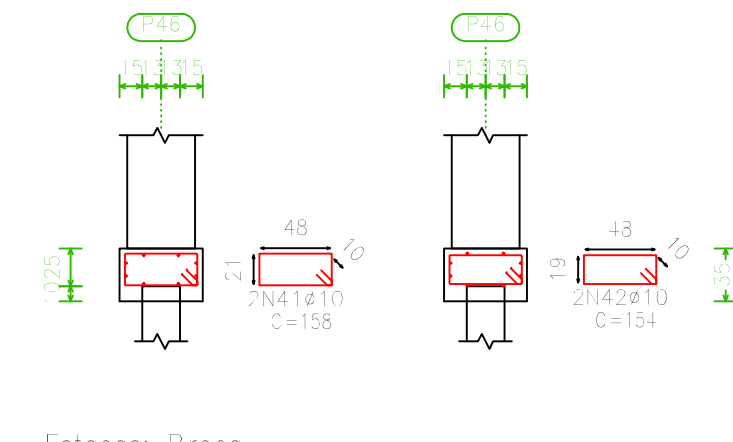
P36, P37, P38, P39, P40, P41, P42, P43, P44 e P45



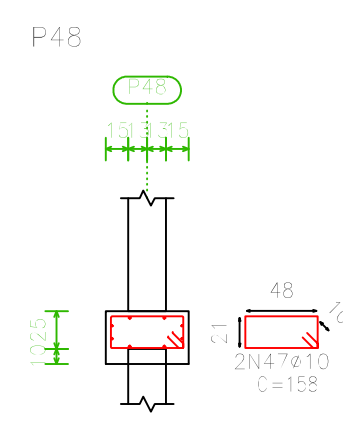
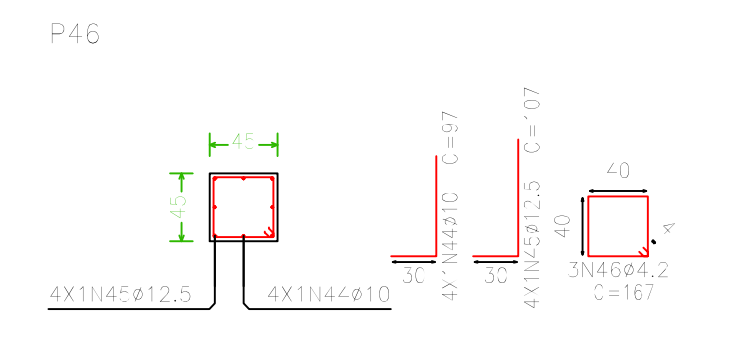
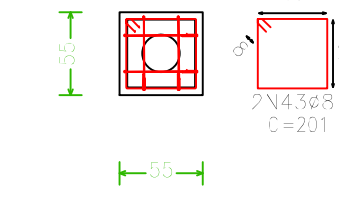
Estacas: Broca



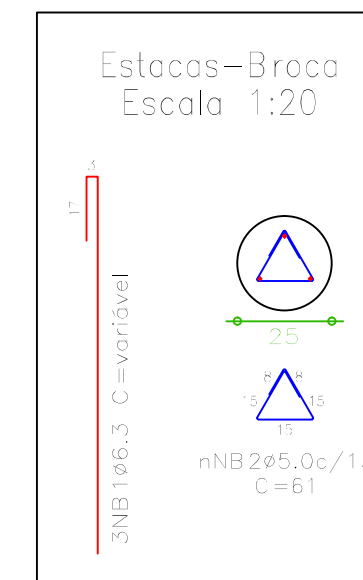
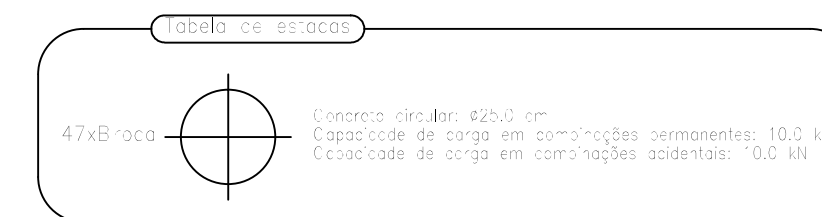
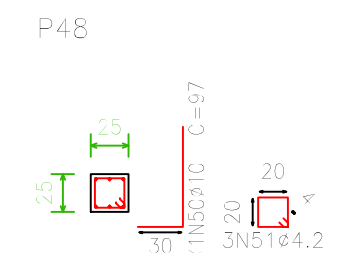
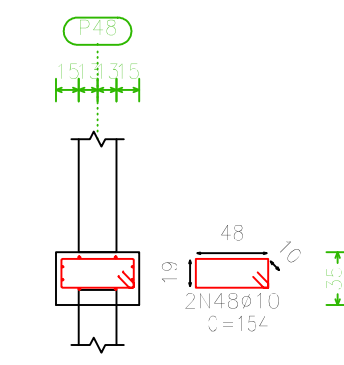
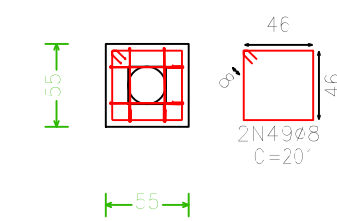
P46 e P47



Estacas: Broca



Estacas: Broca



Estacas-Broca na profundidade de encontro com solo resistente, ou na profundidade mínima de 4m.

Elemento	Pos.	Diam. (cm)	Q.	Dob. (cm)	Red. (cm)	Dob. (cm)	Comp. (cm)	Total (cm)	CA-50-A (kg)	CA-60-B (kg)
P1=P2=P4=P6=P27 P28=P29	2	ø10			158		158	316	2,3	
	3	ø8			231		201	402	1,6	
	4	ø10	30		87		97	388	2,4	
	5	ø4,2			87		87	201		0,2
	Total=100%									8,7
P3=P5=P24=P25	6	ø10			158		158	316	2,3	
	7	ø10			154		154	308	1,8	
	8	ø8			231		201	402	1,6	
	9	ø10	30		87		97	388	2,4	0,3
	Total=100%									8,7
P8=P9=P10=P11 P12=P13=P14=P15 P16=P17=P18	1	ø10			158		158	316	2,3	
	12	ø10			154		154	308	1,8	
	13	ø8			231		201	402	1,6	
	14	ø10	30		87		97	388	2,4	0,2
	15	ø4,2			87		87	201		0,2
Total=100%									8,7	1,2
P19=P20=P23=P26	16	ø10			158		158	316	2,3	
	17	ø10			154		154	308	1,8	
	18	ø8			231		201	402	1,6	
	19	ø10	30		87		97	388	2,4	0,3
	20	ø4,2			87		87	201		0,2
Total=100%									8,7	1,2
P21=P22	21	ø10			158		158	316	2,3	
	22	ø10			154		154	308	1,8	
	23	ø8			231		201	402	1,6	
	24	ø10	30		87		97	388	2,4	0,3
	25	ø4,2			87		87	201		0,2
Total=100%									8,7	0,6
P30	26	ø10			158		158	316	2,3	
	27	ø10			154		154	308	1,8	
	28	ø8			231		201	402	1,6	
	29	ø10	30		87		97	388	2,4	0,3
	30	ø4,2			87		87	201		0,2
Total=100%									8,7	0,3
P31	31	ø10			158		158	316	2,3	
	32	ø8			174		174	442	1,7	
	33	ø8			221		221	562	3,7	
	34	ø10	30		87		97	388	2,4	0,3
	35	ø4,2			137		137	411		0,4
Total=100%									10,6	0,4
P36=P37=P38=P39 P40=P41=P42=P43 P44=P45	36	ø10			158		158	316	2,3	
	37	ø10			154		154	308	1,8	
	38	ø8			231		201	402	1,6	
	39	ø10	30		87		97	388	2,4	0,3
	40	ø4,2			87		87	261		0,3
Total=100%									8,7	0,3
P46=P47	41	ø10			158		158	316	2,3	
	42	ø10			154		154	308	1,8	
	43	ø8			231		201	402	1,6	
	44	ø10	30		87		97	388	2,4	0,3
	45	ø12,5			187		187	428	4,2	0,5
46	ø4,2			87		87	167	501		0,6
Total=100%									13,3	0,6
P48	47	ø10			158		158	316	2,3	
	48	ø10			154		154	308	1,8	
	49	ø8			231		201	402	1,6	
	50	ø10	30		87		97	388	2,4	0,3
	51	ø4,2			87		87	261		0,3
Total=100%									10,1	0,3

Resumo Aço Fundação		Comp. total (m)	Peso+10% (kg)	Total
Detalhamento fundação				
CA-50-A	ø8	173,3	75	
	ø10	439,4	304	
	ø12,5	8,6	9	388
CA-60-B	ø4,2	99,0	12	12
Total				400

Elemento	Pos.	Diam. (cm)	Q.	Dob. (cm)	Red. (cm)	Dob. (cm)	Comp. (cm)	Total (cm)	CA-50-A (kg)	CA-60-B (kg)
P32=P33=P34=P35	1	ø10			58		158	316	2,3	
	2	ø10			54		154	308	1,8	
	3	ø8			231		201	402	1,6	
Total=100%									6,1	
Total=100%									24,4	

Resumo Aço Pilares Metálicos		Comp. total (m)	Peso+10% (kg)	Total
Detalhamento fundação				
CA-50-A	ø8	16,1	7	
	ø10	25,0	17	24