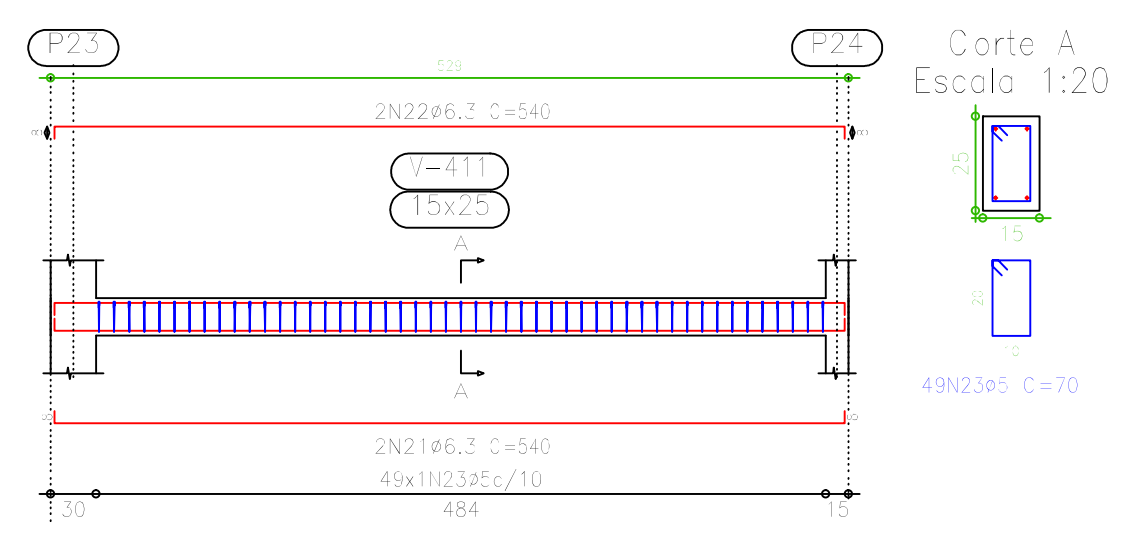
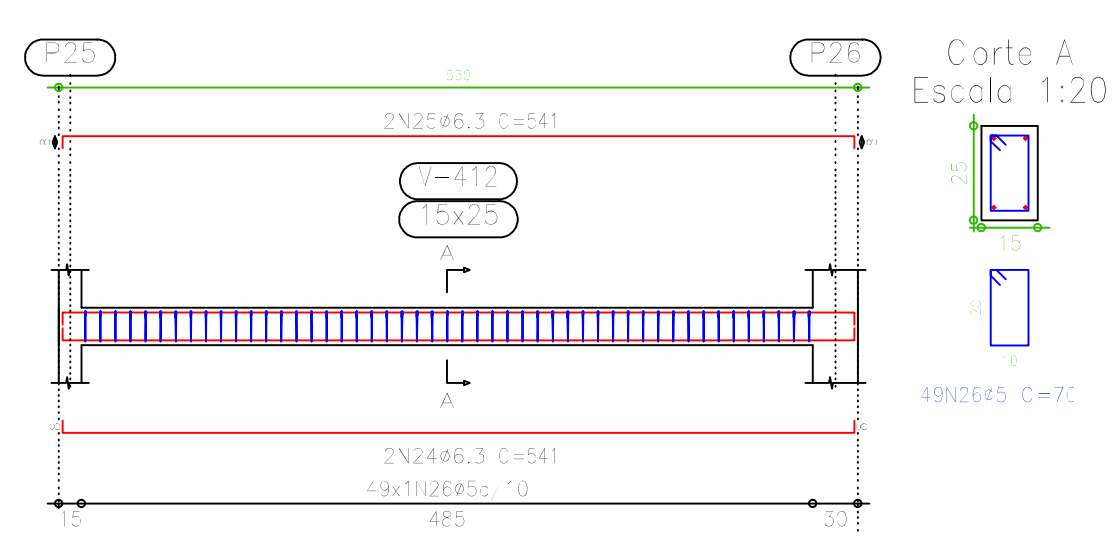


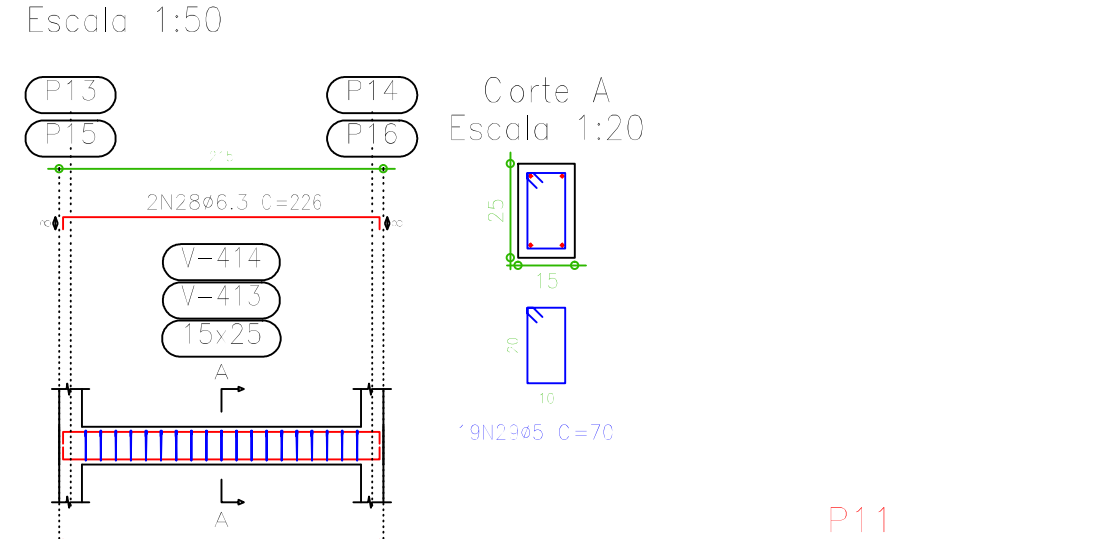
V 7
Escala 1:50



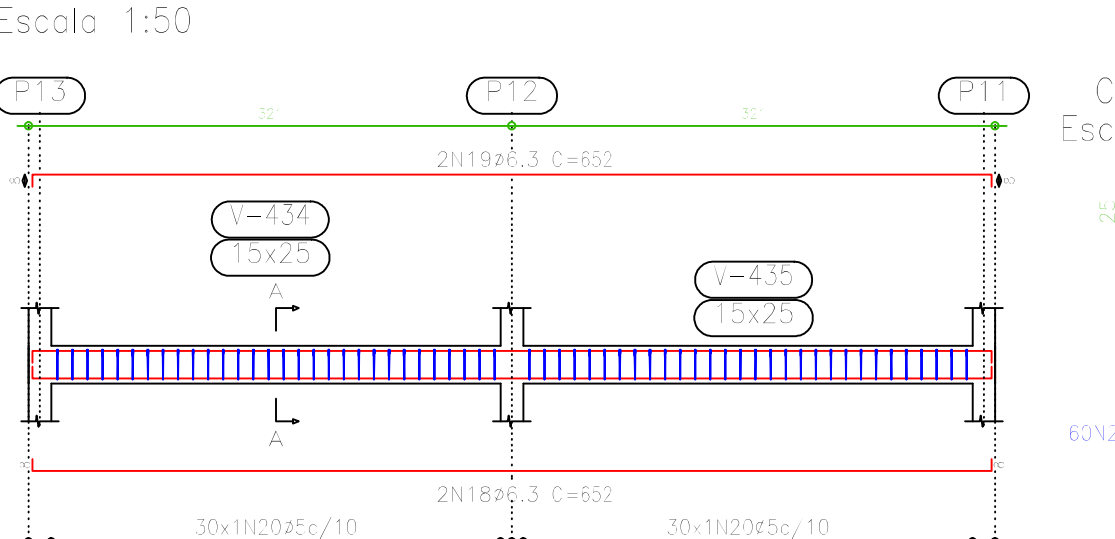
V 8
Escala 1:50



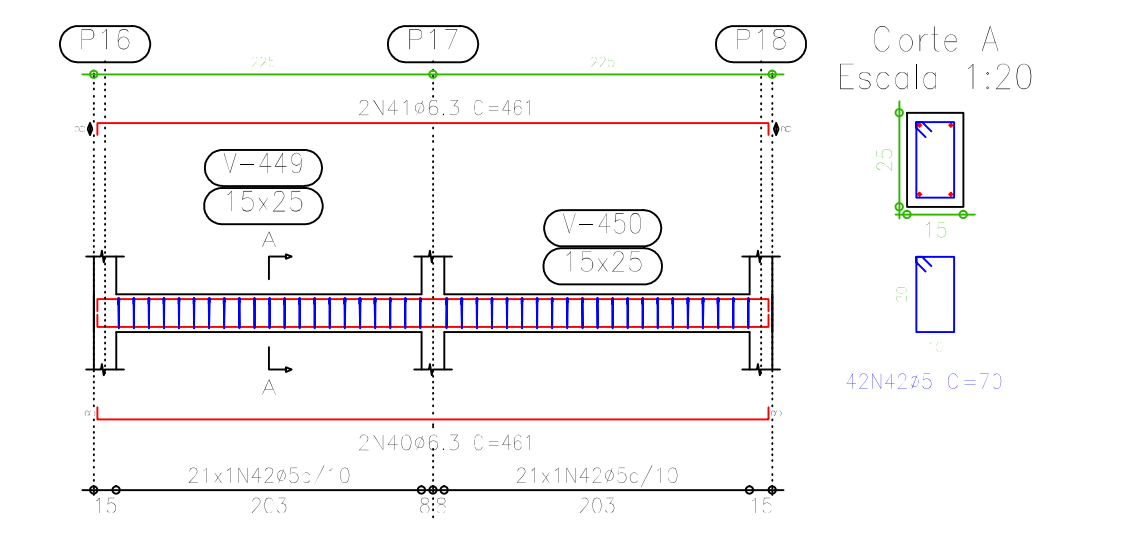
V 9
Escala 1:50



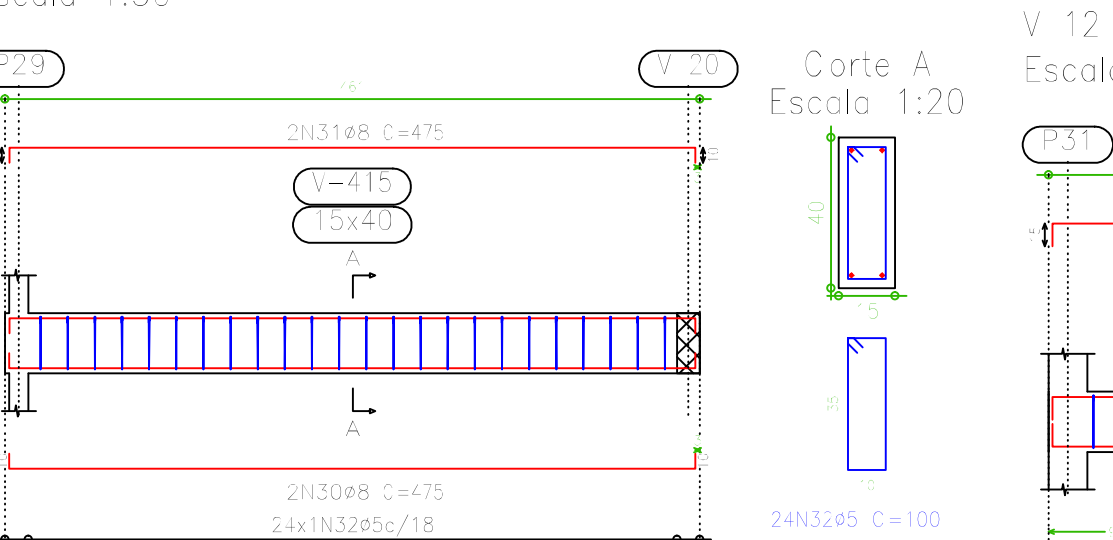
V 18
Escala 1:50



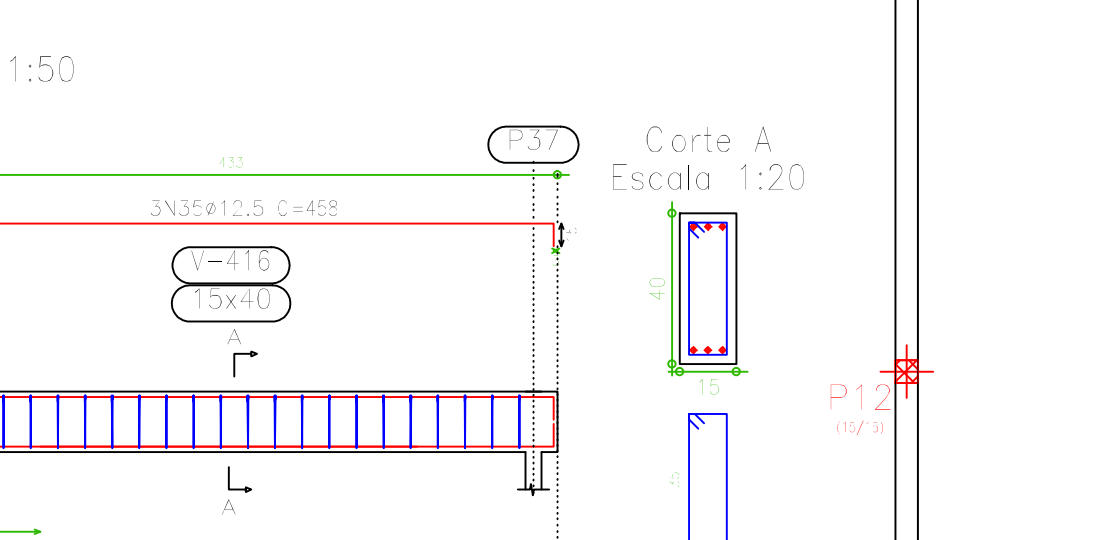
V 24
Escala 1:50



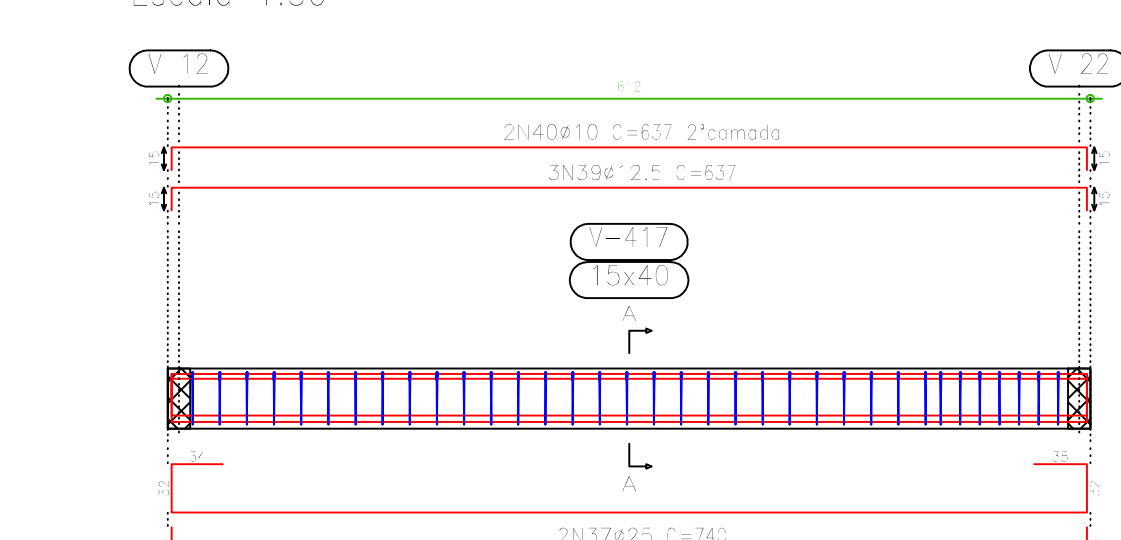
V 11
Escala 1:50



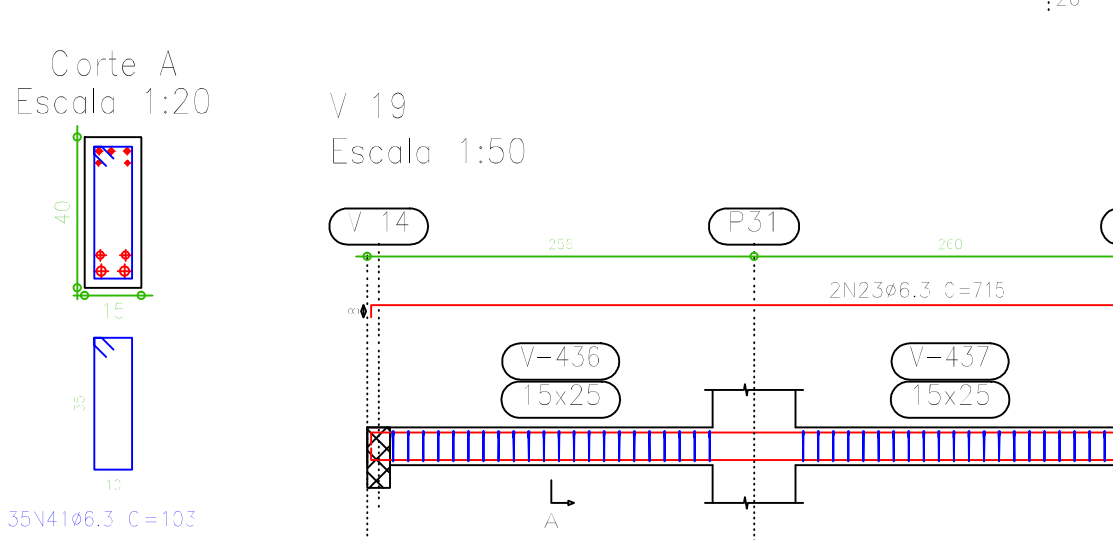
V 12
Escala 1:50



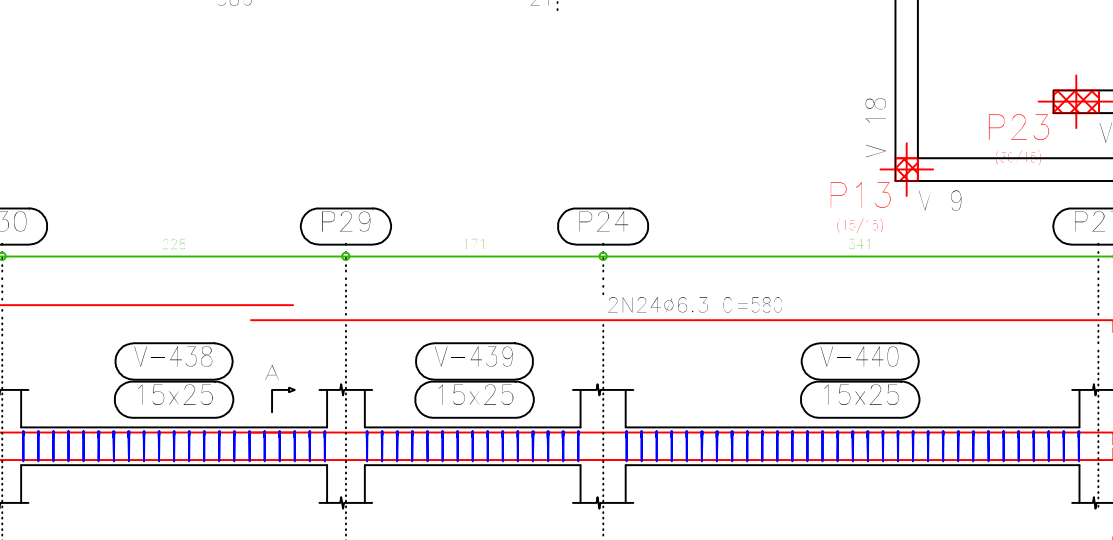
V 13
Escala 1:50



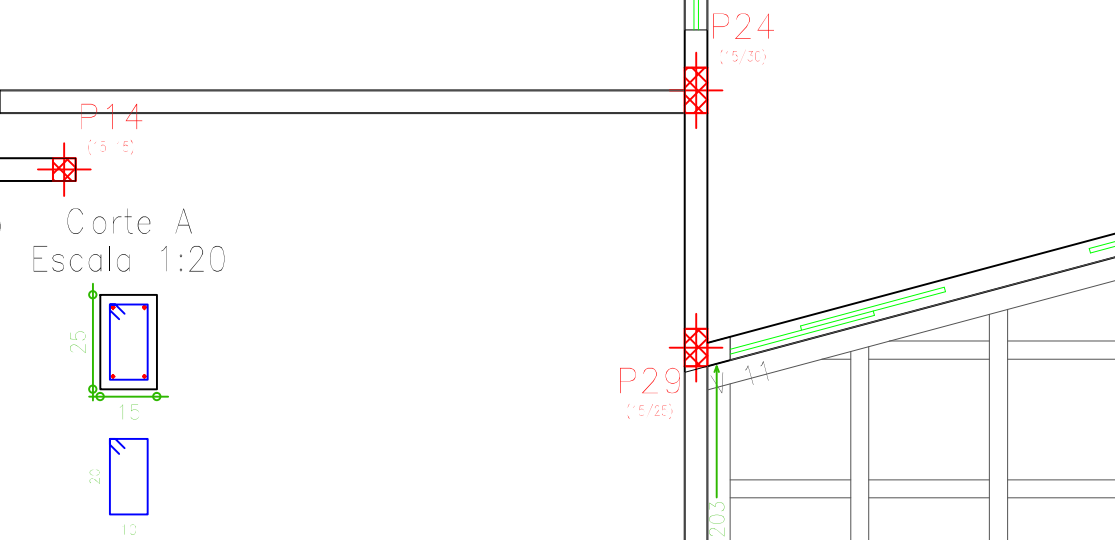
V 19
Escala 1:50



V 22
Escala 1:50

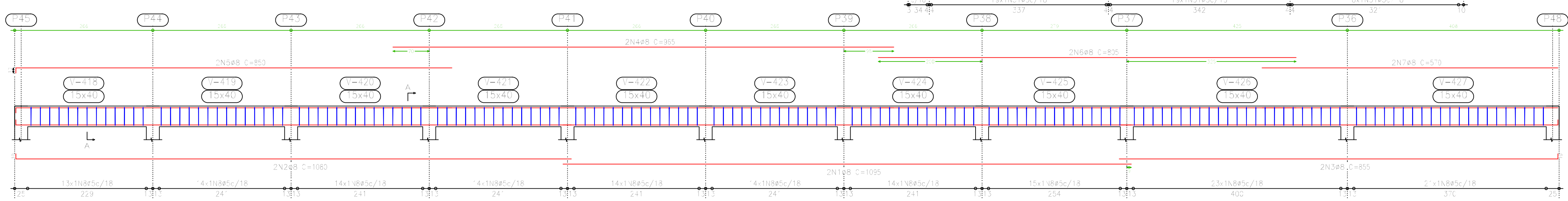


V 25
Escala 1:50

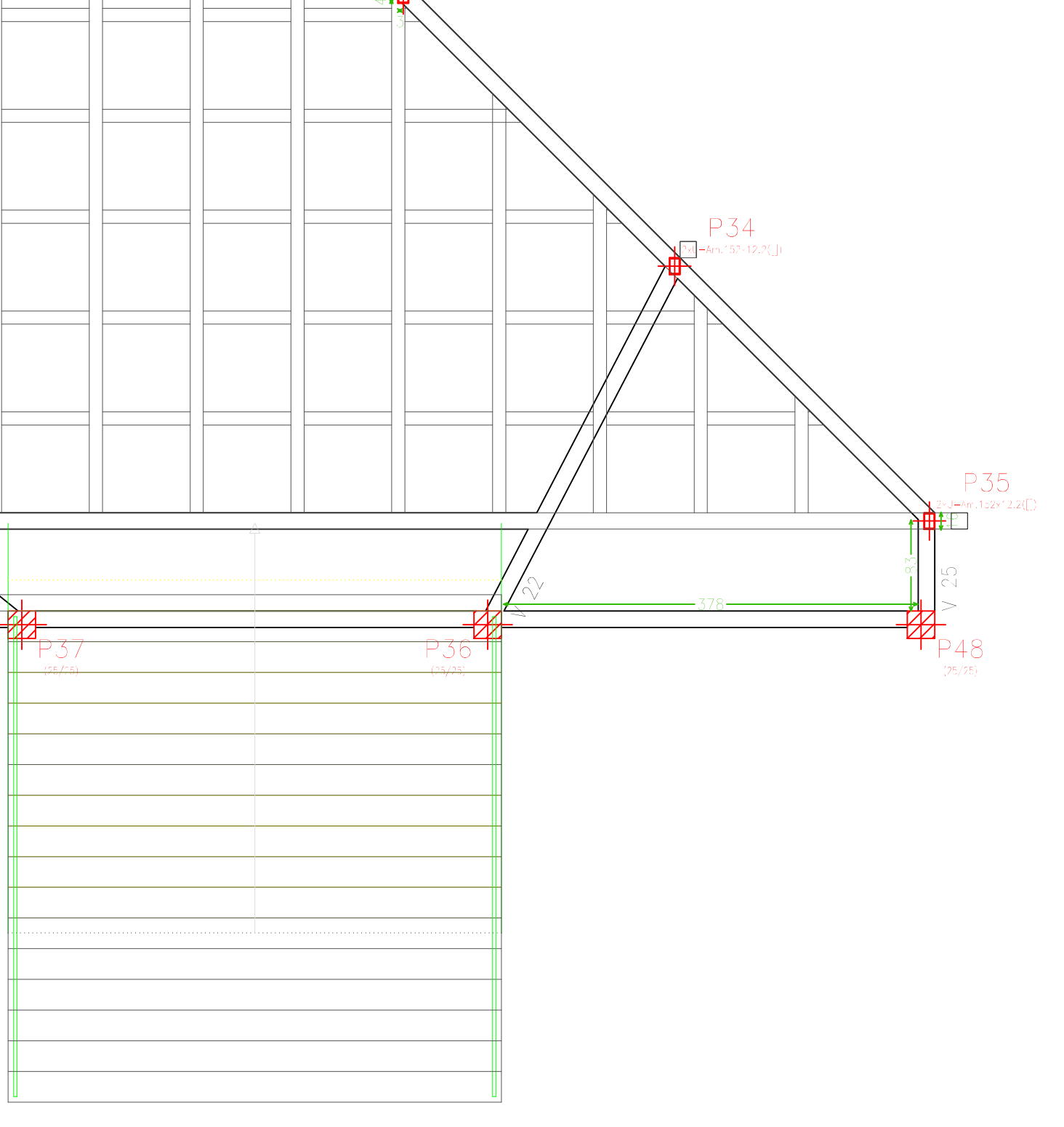
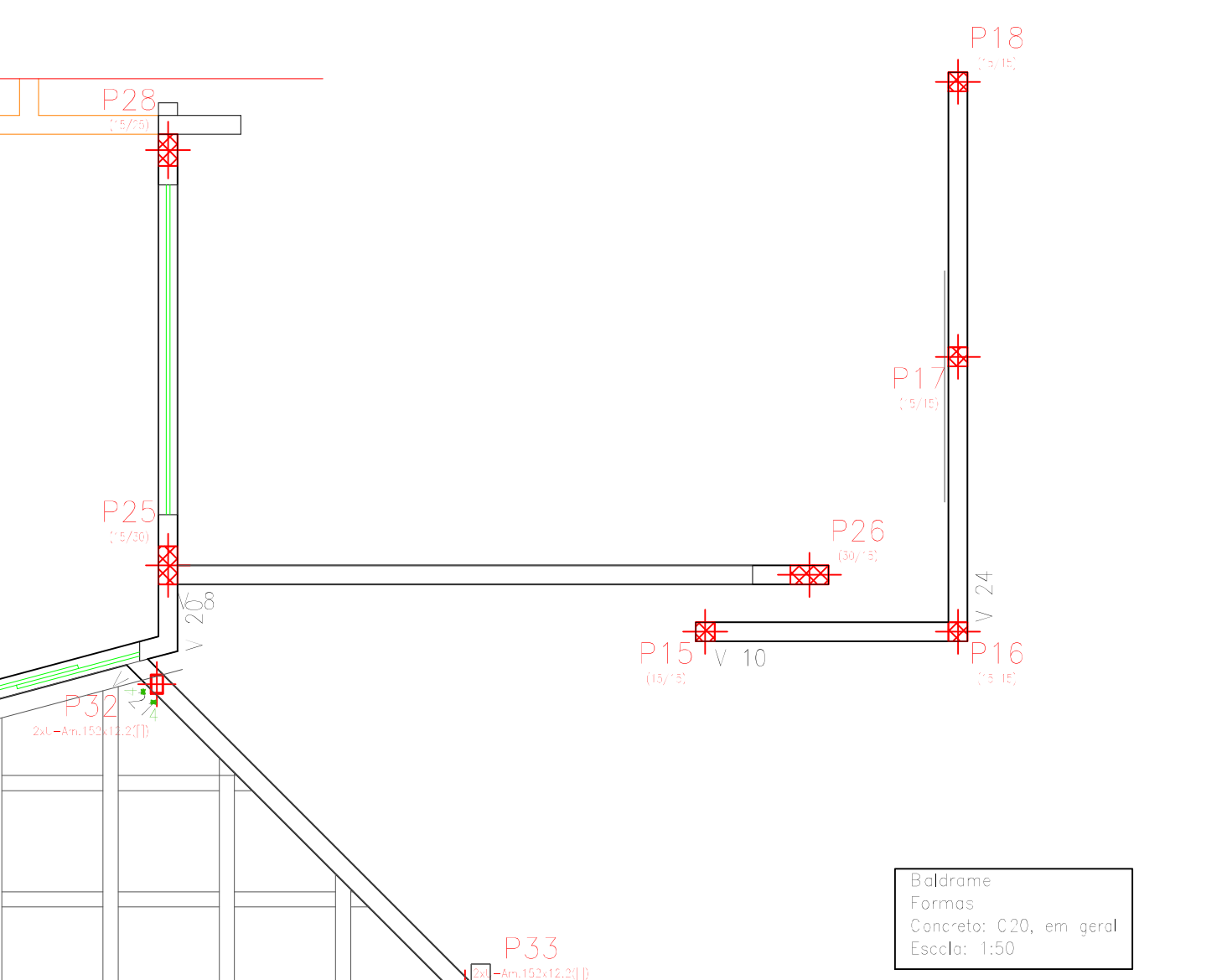


Elemento	Pos.	Diam.	Q.	Doç.	Refo.	Doç.	Comp.	Total	CA-50-A	CA-60-B	
		(cm)		(cm)	(cm)	(cm)	(cm)	(cm)	(kg)	(kg)	
V 7	30	ø8	2	0	455	10	475	950	3,7		
	31	ø8	2	0	455	10	475	950	3,7		
	32	ø5	24			100	2400			3,8	
Total+10%									8,1	4,0	
V 12	33	ø12.5	2	0	475	15	490	980	3,0		
	34	ø12.5	3	0	428	15	443	1329	2,5		
	35	ø12.5	3	0	428	15	443	1329	2,5		
	36	ø5	22			100	2200			3,5	
Total+10%									27,5	3,3	
V 13	37	ø25	2	0	501	67	568	1136	55,7		
	38	ø20	2	0	501	26	527	1054	32,6		
	39	ø12.5	3	0	501	15	516	1032	3,8		
	40	ø10	2	0	501	15	516	1032	3,8		
	41	ø6.3	35			100	3605			8,9	
Total+10%									136,0		
V 19	21	ø6.3	2	0	337	6	343	686	4,6		
	22	ø6.3	2	0	352	6	358	716	1,8		
	23	ø6.3	2	0	370	6	376	752	3,5		
	24	ø6.3	2	0	572	8	580	1160	2,9		
	25	ø5	11			70	770			12,2	
Total+10%									4,7	13,4	
V 20	26	ø6.3	2	0	405	5	410	820	2,1		
	27	ø6.3	2	0	405	6	411	822	2,1		
	28	ø5	35			70	2450			3,8	
Total+10%									4,6	4,2	
V 2	29	ø8	2	0	965	10	975	1950	8,5		
	30	ø8	2	0	965	10	975	1950	8,5		
	31	ø5	38			100	3800			9,1	
Total+10%									25,1	18,2	
V 22	32	ø12.5	2	0	387	15	402	804	8,2		
	33	ø12.5	3	0	310	15	325	975	3,0		
	34	ø10	2	0	387	17	402	804	5,3		
	35	ø10	2	0	387	17	402	804	2,7		
	36	ø6.3	21			100	2163			5,3	
Total+10%									27,0		
V 25	43	ø8	2	0	109	10	119	238	1,8		
	44	ø6.3	1	0	109	10	119	238	0,3		
	45	ø8	2	0	100	10	110	220	0,9		
	46	ø5	5			100	500			0,8	
Total+10%									2,4	0,3	

V 14
Escala 1:50



Elemento	Pos.	Diam.	Q.	Doç.	Refo.	Doç.	Comp.	Total	CA-50-A	CA-60-B	
		(cm)		(cm)	(cm)	(cm)	(cm)	(cm)	(kg)	(kg)	
V 7	30	ø8	2	0	455	10	475	950	2,7		
	31	ø8	2	0	455	10	475	950	2,7		
	32	ø5	24			100	2400			5,4	
Total+10%									5,9	5,9	
V 8	24	ø6.3	2	0	524	8	532	1064	2,1		
	25	ø6.3	2	0	524	8	532	1064	2,1		
	26	ø5	24			70	2430			5,4	
Total+10%									5,9	5,9	
V 9+V 10	27	ø6.3	2	0	310	8	318	636	1,1		
	28	ø6.3	2	0	310	8	318	636	1,1		
	29	ø5	15			70	1320			2,1	
	Total+10%									2,4	4,6
V 18	18	ø6.3	2	0	636	8	644	1288	3,2		
	19	ø6.3	2	0	636	8	644	1288	3,2		
	20	ø5	35			70	4200			9,6	
Total+10%									7,0	7,3	
V 24	40	ø6.3	2	0	445	8	453	906	2,3		
	41	ø6.3	2	0	445	8	453	906	2,3		
	42	ø5	42			70	2940			4,6	
Total+10%									5,1	5,1	



Elemento	Pos.	Diam.	Q.	Doç.	Refo.	Doç.	Comp.	Total	CA-50-A	CA-60-B	
		(cm)		(cm)	(cm)	(cm)	(cm)	(cm)	(kg)	(kg)	
V 14	1	ø8	2	0	109	10	119	238	1,8		
	2	ø8	2	0	109	10	119	238	1,8		
	3	ø8	10			100	800			6,7	
	4	ø8	10			100	800			6,7	
	5	ø8	10			100	800			6,7	
	6	ø8	10			100	800			6,7	
	7	ø8	10			100	800			6,7	
	8	ø5	156			100	15600			24,5	
Total+10%									53,8	27,0	