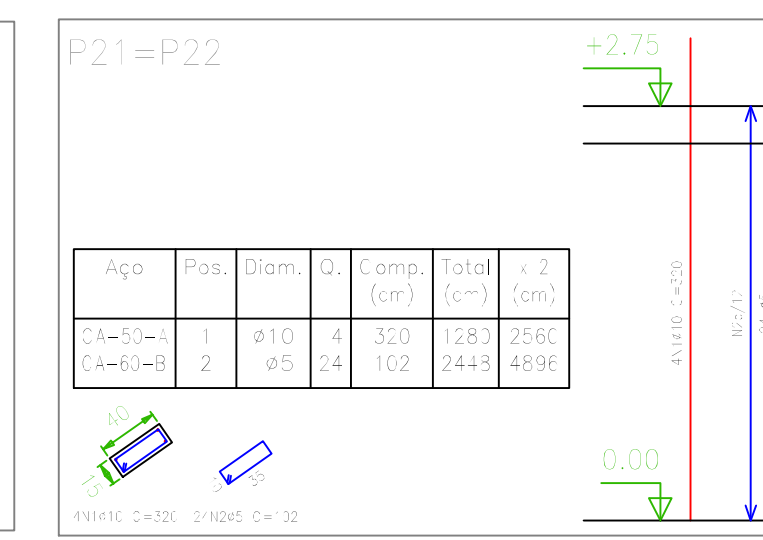
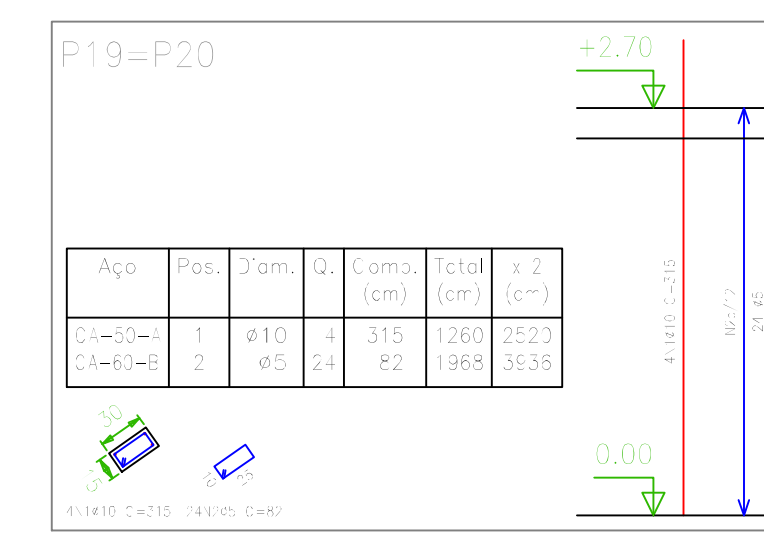
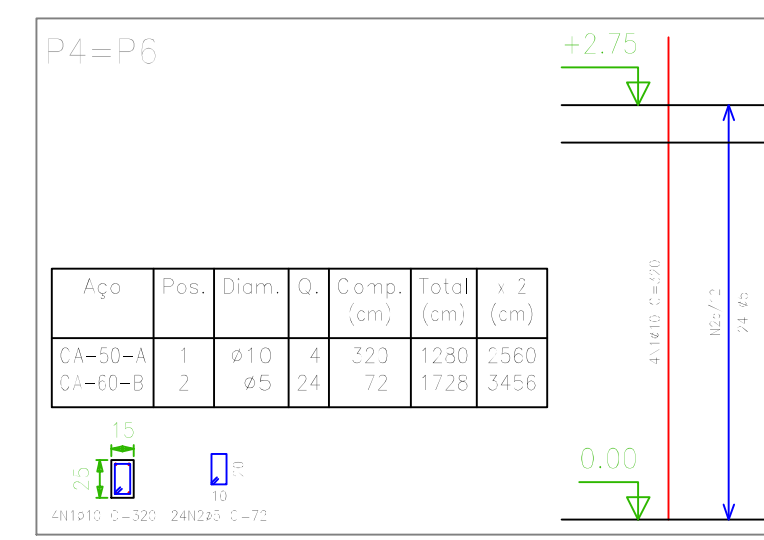
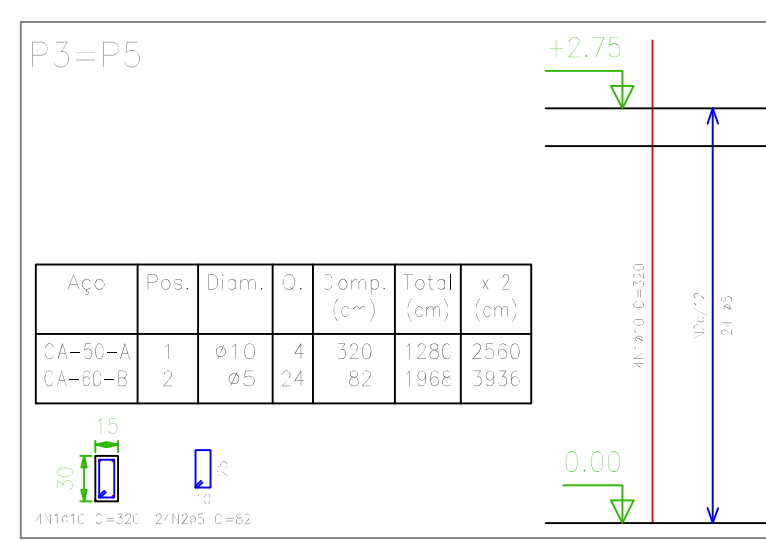
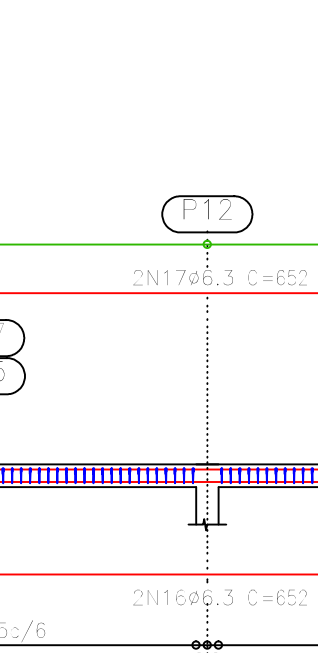
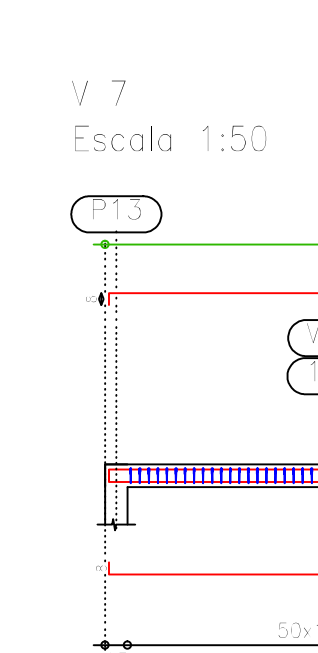
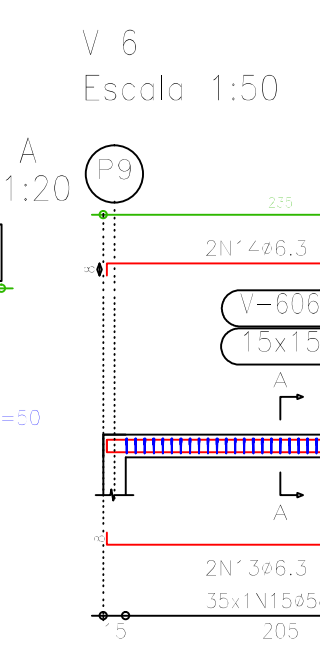
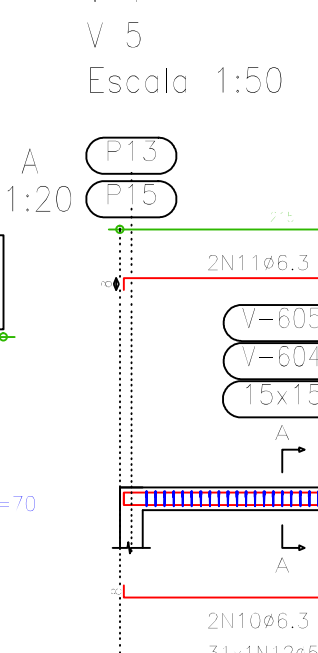
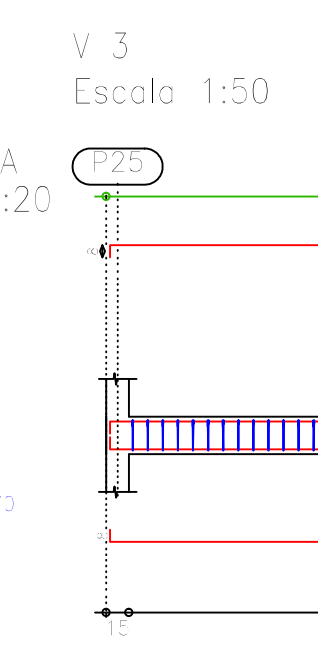
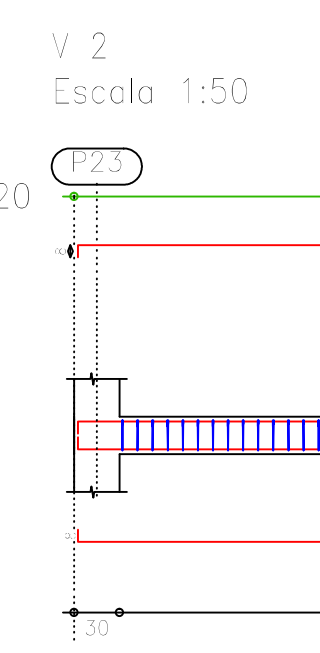
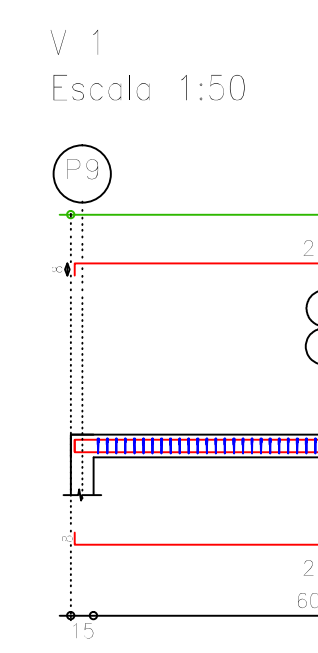
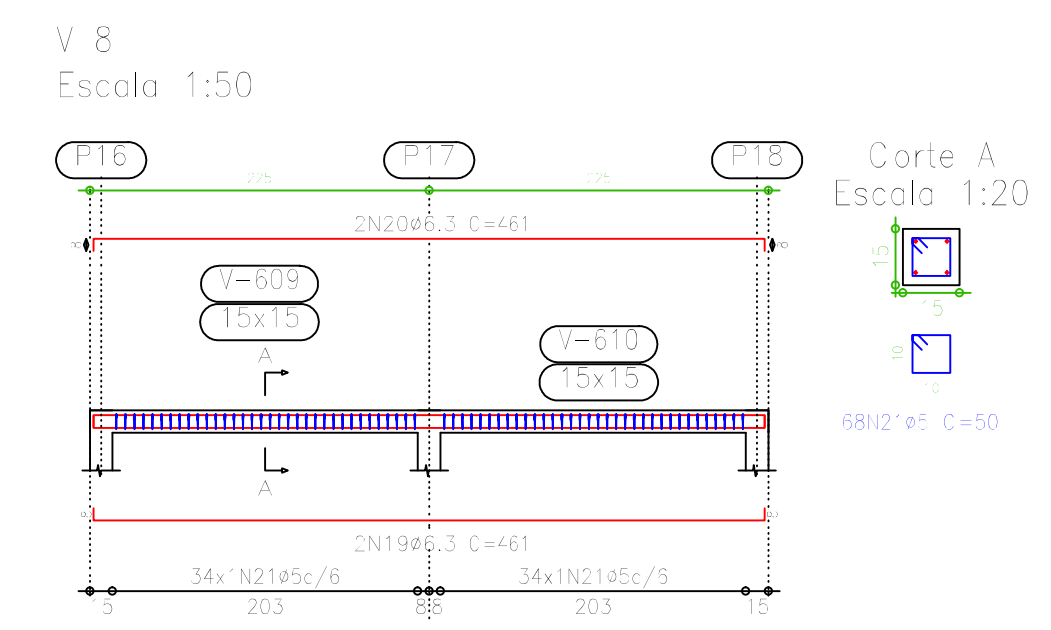


Cinto dos Muros
Fôrmas
Concreto: C20, em geral
Escala: 1:50

Elemento	Pos.	Diam.	Q.	Dob.	Rele	Dob.	Comp.	Total	CA-50-A	CA-60-B
		(cm)	(cm)	(cm)	(cm)	(cm)	(cm)	(cm)	(kg)	(kg)
V 1	1	ø6,3	2	8	385	8	401	802	2,0	
	2	ø6,3	2	8	385	8	401	802	2,0	
	3	ø5	10	0	0	0	50	3000		4,7
Total+10%									4,4	5,2
V 2	4	ø6,3	2	8	524	8	540	1080	2,7	
	5	ø6,3	2	8	524	8	540	1080	2,7	
	6	ø5	10	0	0	0	70	3430		5,4
Total+10%									5,9	5,9
V 3	7	ø6,3	2	8	524	8	541	1082	2,7	
	8	ø6,3	2	8	524	8	541	1082	2,7	
	9	ø5	10	0	0	0	70	3430		5,4
Total+10%									5,9	5,9
V 4+5	10	ø6,3	2	8	210	8	226	452	1,1	
	11	ø6,3	2	8	210	8	226	452	1,1	
	12	ø5	10	0	0	0	50	1500		2,4
Total+10%									2,4	2,6
V 6	13	ø6,3	2	8	230	8	246	492	1,2	
	14	ø6,3	2	8	230	8	246	492	1,2	
	15	ø5	10	0	0	0	50	1750		2,7
Total+10%									2,6	3,0
V 7	16	ø6,3	2	8	636	8	652	1304	3,2	
	17	ø6,3	2	8	636	8	652	1304	3,2	
	18	ø5	10	0	0	0	50	5000		7,9
Total+10%									7,0	8,7
V 8	19	ø6,3	2	8	445	8	461	922	2,3	
	20	ø6,3	2	8	445	8	461	922	2,3	
	21	ø5	10	0	0	0	50	3430		5,3
Total+10%									5,1	5,8

Resumo Aço	Comp. total	Peso+10%	Total
Cinto dos Muros	(m)	(kg)	
CA-50-A ø6,3	131,7	36	36
CA-60-B ø5	231,1	40	40
Total			76

Item	Quantidade	Valor Unit.	Valor Total
Materiais	1,00	1,00	1,00
Mano de obra	1,00	1,00	1,00
Formas	1,00	1,00	1,00
Transporte	1,00	1,00	1,00
Instalação	1,00	1,00	1,00
Total			5,00



Pilares que terminam em Abertura Interior
Concreto: C20, em geral
Aço: CA-50-A e CA-60-B
Escala: 1:50

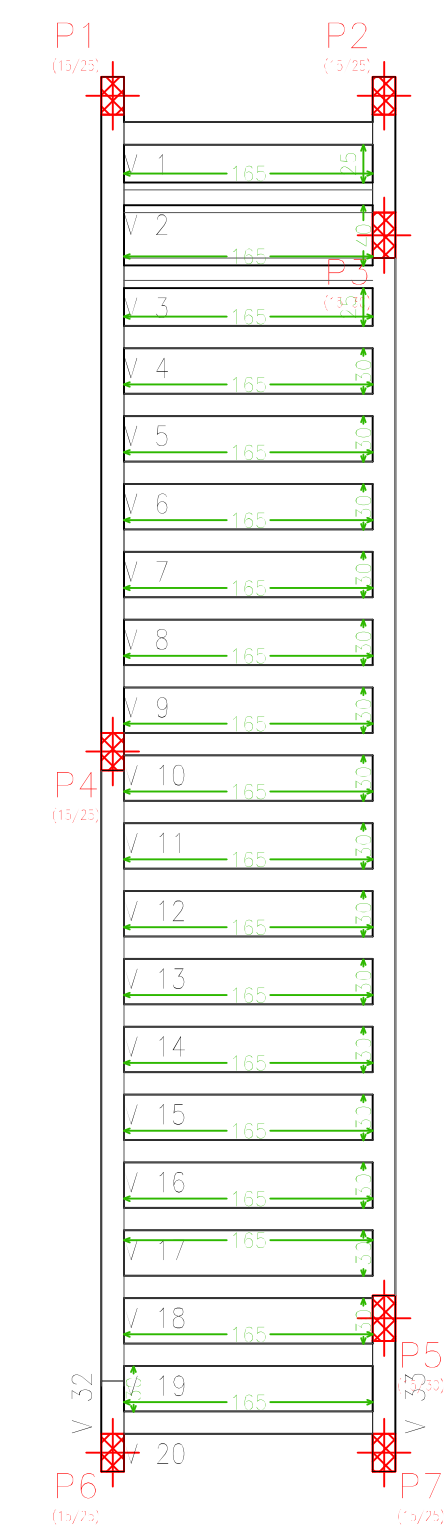
Aço	Pos.	Diam.	Q.	Comp.	Total	x 2
		(cm)	(cm)	(cm)	(cm)	(cm)
CA-50-A	1	ø10	4	320	1280	2560
CA-60-B	2	ø5	24	62	1608	3216

Aço	Pos.	Diam.	Q.	Comp.	Total	x 2
		(cm)	(cm)	(cm)	(cm)	(cm)
CA-50-A	1	ø10	24	320	1280	2560
CA-60-B	2	ø5	24	62	1608	3216

Aço	Pos.	Diam.	Q.	Comp.	Total	x 2
		(cm)	(cm)	(cm)	(cm)	(cm)
CA-50-A	1	ø10	4	315	1260	2520
CA-60-B	2	ø5	24	62	1568	3136

Aço	Pos.	Diam.	Q.	Comp.	Total	x 2
		(cm)	(cm)	(cm)	(cm)	(cm)
CA-50-A	1	ø10	4	320	1280	2560
CA-60-B	2	ø5	24	102	2448	4896

Resumo Aço	Comp. total	Peso+10%	Total
Abertura Interior	(m)	(kg)	
CA-50-A ø10	102,0	70	70
CA-60-B ø5	162,2	28	28
Total			98



Elemento	Pos.	Diam.	Q.	Dob.	Rele	Dob.	Comp.	Total	CA-50-A	CA-60-B
		(cm)	(cm)	(cm)	(cm)	(cm)	(cm)	(cm)	(kg)	(kg)
V 1	1	ø8	2	10	193	10	210	420	1,8	
	2	ø8	2	10	193	10	210	420	1,8	
	3	ø5	10	0	0	0	100	1000		1,6
Total+10%									3,5	1,6
V 2	4	ø8	2	10	193	10	210	420	1,8	
	5	ø8	2	10	193	10	210	420	1,8	
	6	ø5	10	0	0	0	100	1000		1,6
Total+10%									3,5	1,6
V 3	7	ø6,3	2	8	193	8	206	412	1,0	
	8	ø6,3	2	8	193	8	206	412	1,0	
	9	ø5	10	0	0	0	100	1000		1,6
Total+10%									2,9	1,8
V 10	10	ø8	2	10	193	10	210	420	1,8	
	11	ø8	2	10	193	10	210	420	1,8	
	12	ø5	10	0	0	0	100	1000		1,6
Total+10%									3,5	1,8
V 20	13	ø8	2	10	193	10	210	420	1,8	
	14	ø6,3	2	8	193	8	206	412	1,0	
	15	ø5	10	0	0	0	100	1000		1,6
Total+10%									2,9	1,9
V 33	16	ø8	2	10	193	10	210	420	1,8	
	17	ø8	2	10	193	10	210	420	1,8	
	18	ø5	10	0	0	0	100	1000		1,6
Total+10%									3,5	1,8
V 18	19	ø8	2	10	193	10	210	420	1,8	
	20	ø8	2	10	193	10	210	420	1,8	
	21	ø5	10	0	0	0	100	1000		1,6
Total+10%									3,5	1,8
V 32	22	ø8	2	10	193	10	210	420	1,8	
	23	ø8	2	10	193	10	210	420	1,8	
	24	ø5	10	0	0	0	100	1000		1,6
Total+10%									3,5	1,8
V 19	25	ø8	2	10	193	10	210	420	1,8	
	26	ø8	2	10	193	10	210	420	1,8	
	27	ø5	10	0	0	0	100	1000		1,6
Total+10%									3,5	1,8

Pergalaco
Fôrmas
Concreto: C20, em geral
Aço laminado e soldado: A-35
Consulte os detalhes construtivos correspondentes
3 Esguços
das vigas metálicas com lrejas
Escala: 1:50

