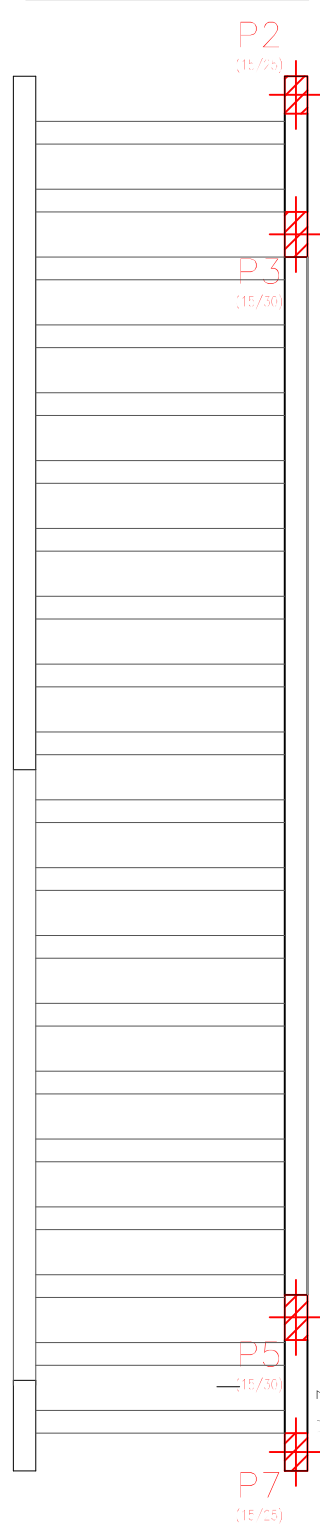
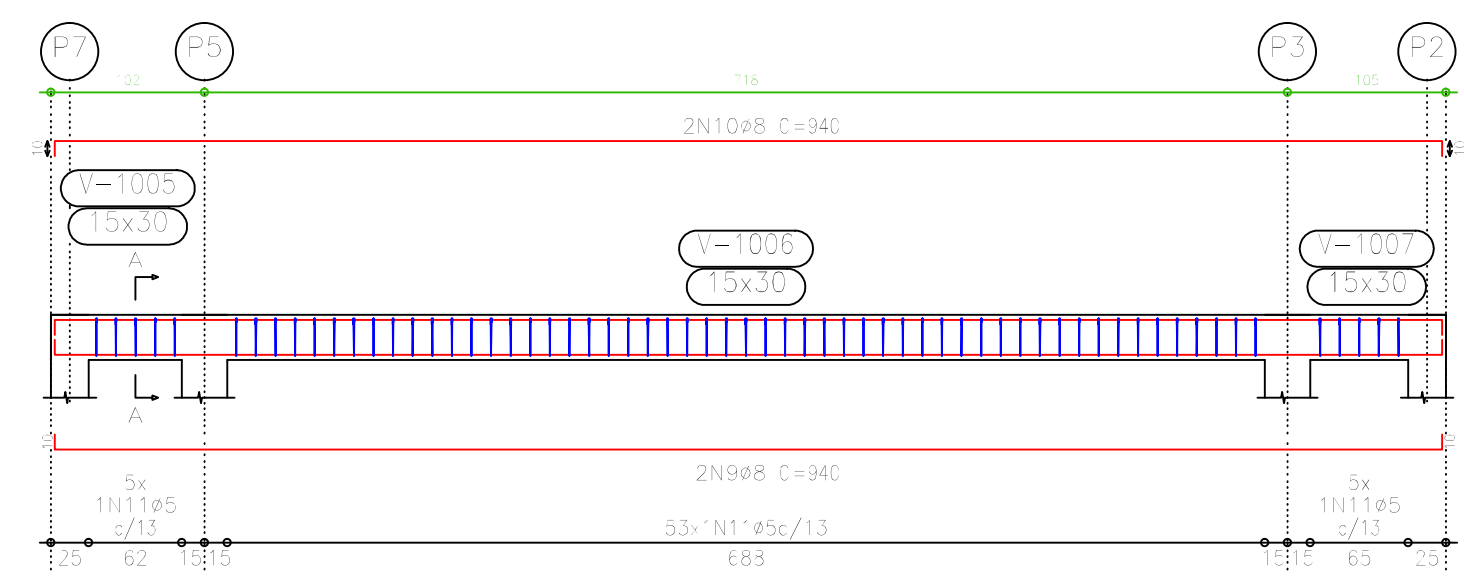


Cinta Parede Alta
Formas
Concreto: C20, em geral
Escala: 1:50

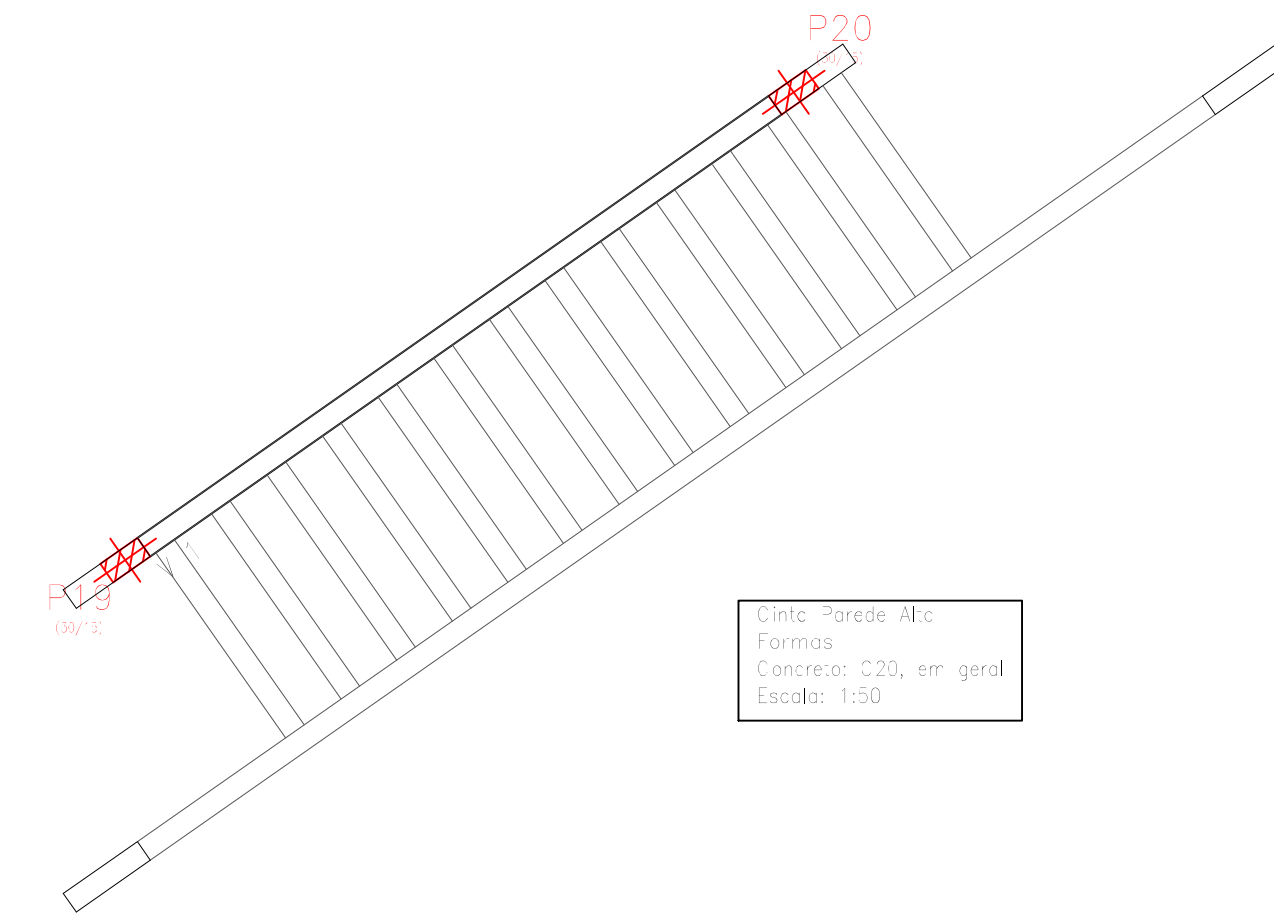


V 3
Escala 1:50



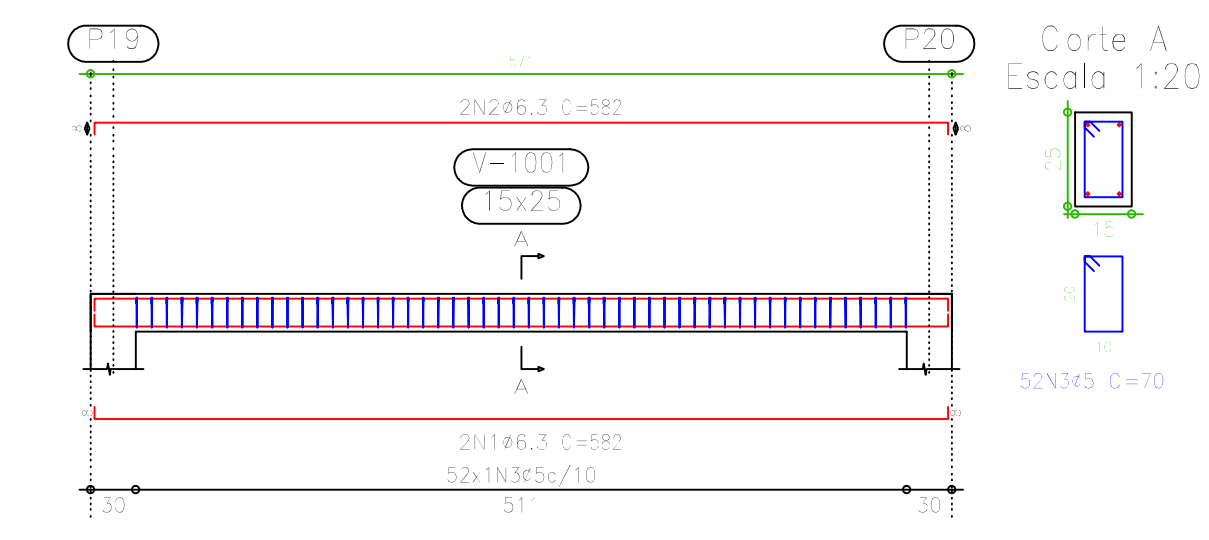
Elemento	Pos.	Diam.	Q.	Dob. (cm)	Reia (cm)	Job. (cm)	Comp. (cm)	Total (cm)	CA-50-A (kg)	CA-60-B (kg)	
V 3	8	Ø8	2	10	920	10	940	1880	7,4		
	10	Ø8	2	10	920	10	940	1880	7,4		
	11	Ø5	63				80	5040		7,9	
Total+10%									16,3	8,7	

Corte A
Escala 1:20

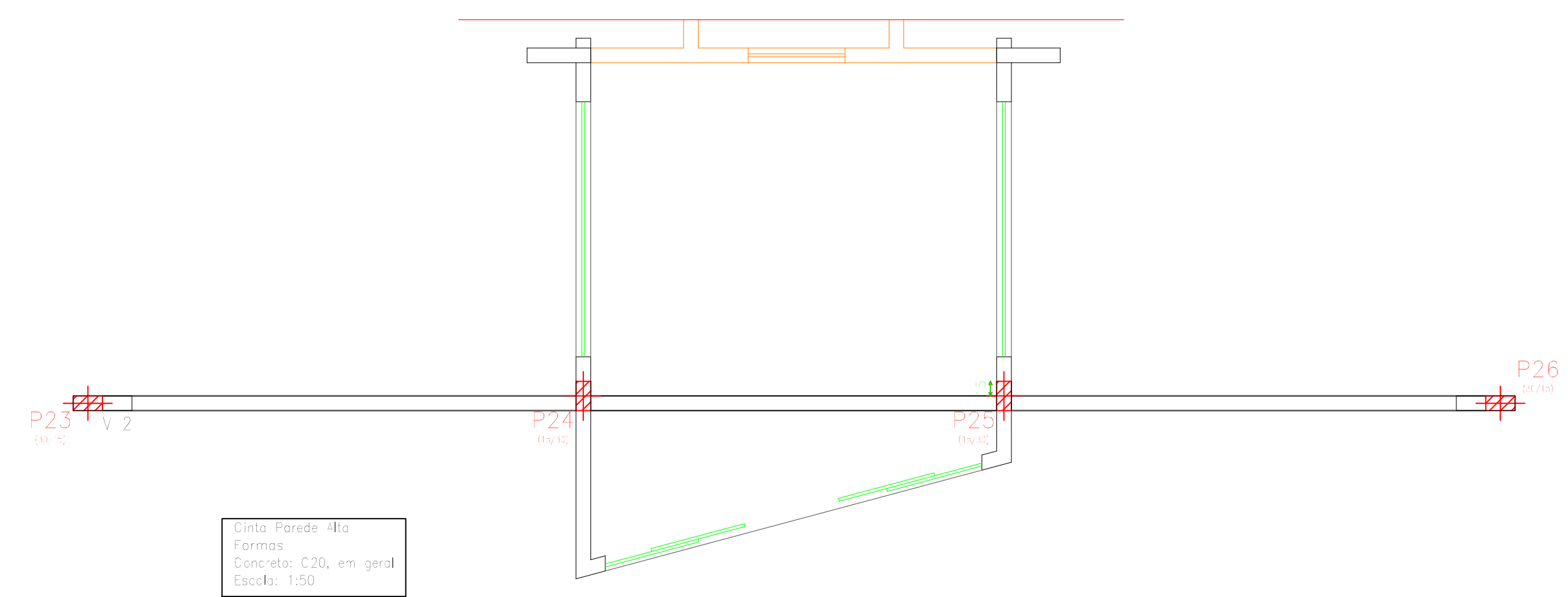


Cinta Parede Alta
Formas
Concreto: C20, em geral
Escala: 1:50

V 1
Escala 1:50



Elemento	Pos.	Diam.	Q.	Dob. (cm)	Reia (cm)	Job. (cm)	Comp. (cm)	Total (cm)	CA-50-A (kg)	CA-60-B (kg)	
V 1	1	Ø6.3	2	8	566	8	582	1164	2,9		
	2	Ø6.3	2	8	566	8	582	1164	2,9		
	3	Ø5	52				70	3640		5,7	
Total+10%									6,4	6,3	

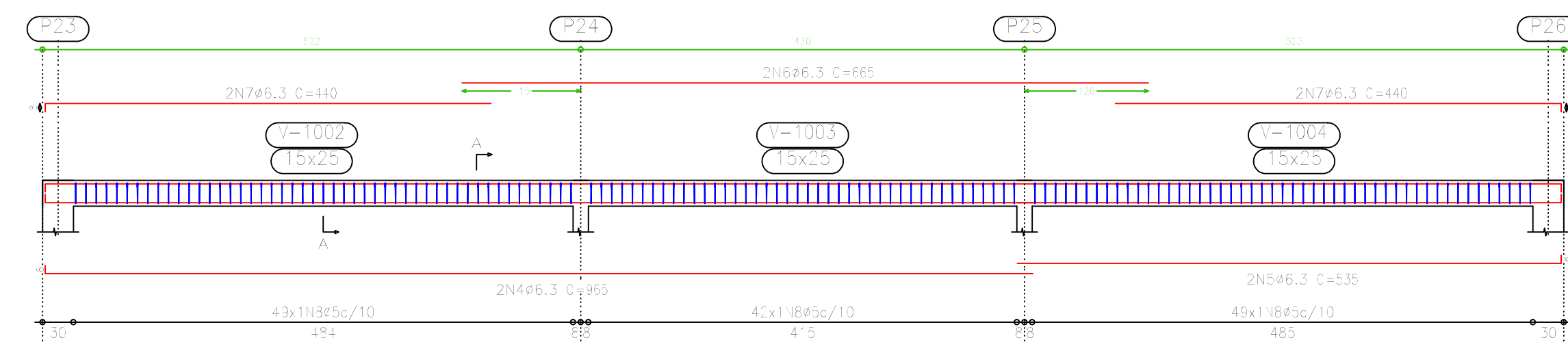


Cinta Parede Alta
Formas
Concreto: C20, em geral
Escala: 1:50

Elemento	Pos.	Diam.	Q.	Dob. (cm)	Reia (cm)	Job. (cm)	Comp. (cm)	Total (cm)	CA-50-A (kg)	CA-60-B (kg)		
V 2	4	Ø6.3	2	8	957		965	1930	4,8			
	5	Ø6.3	2	8	527	8	535	1070	2,6			
	6	Ø6.3	2	8	665		665	1330	3,3			
	7	Ø6.3	4	8	432		440	1760	4,4			
	8	Ø5	140				70	9800		15,4		
	Total+10%									16,3	16,9	

Resumo Aço	Comp. total (m)	Peso+10% (kg)	Total
CA-50-A Ø6.3	84,2	23	
Ø8	37,6	16	39
CA-60-B Ø5	184,8	32	32
Total			71

V 2
Escala 1:50



Corte A
Escala 1:20

Cinta Parede Alta - Gusões (alt. 105 mm)				
Posição	Comp. (m)	Q. (un)	Comp. (m)	Peso (kg)
Acab. Lado	4,20	1	1,10	7,1
Acab. Topo	4,50	1	1,10	7,1
Acab. Sup. Interno	9,80	0,06	0,06	0,4
Acab.	28,2	1,02	1,02	1,0
Total (por 60)	46,70	2,19	3,28	19,6