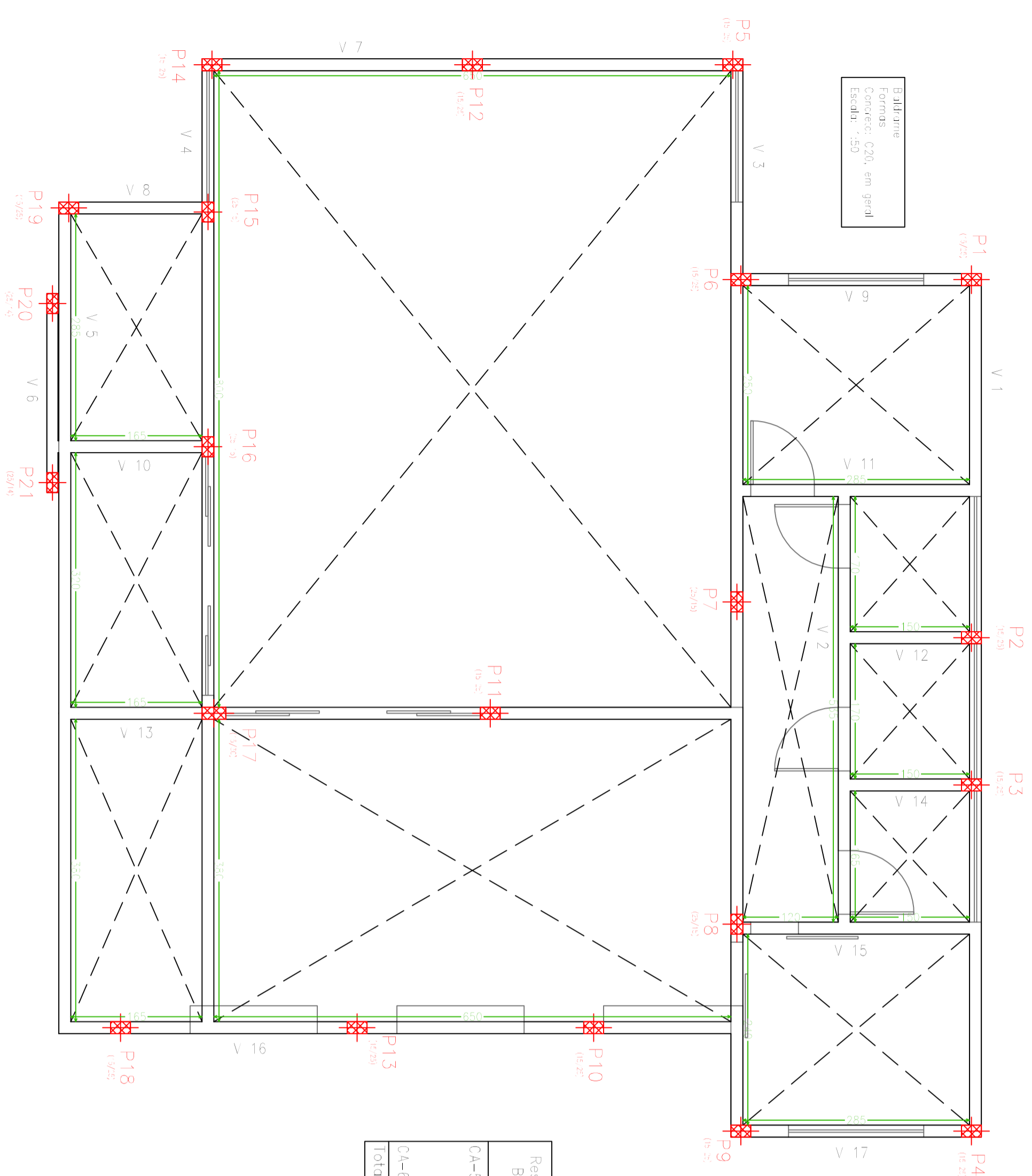


Baldrame
Formas: C20, em geral
Escala: 1:50

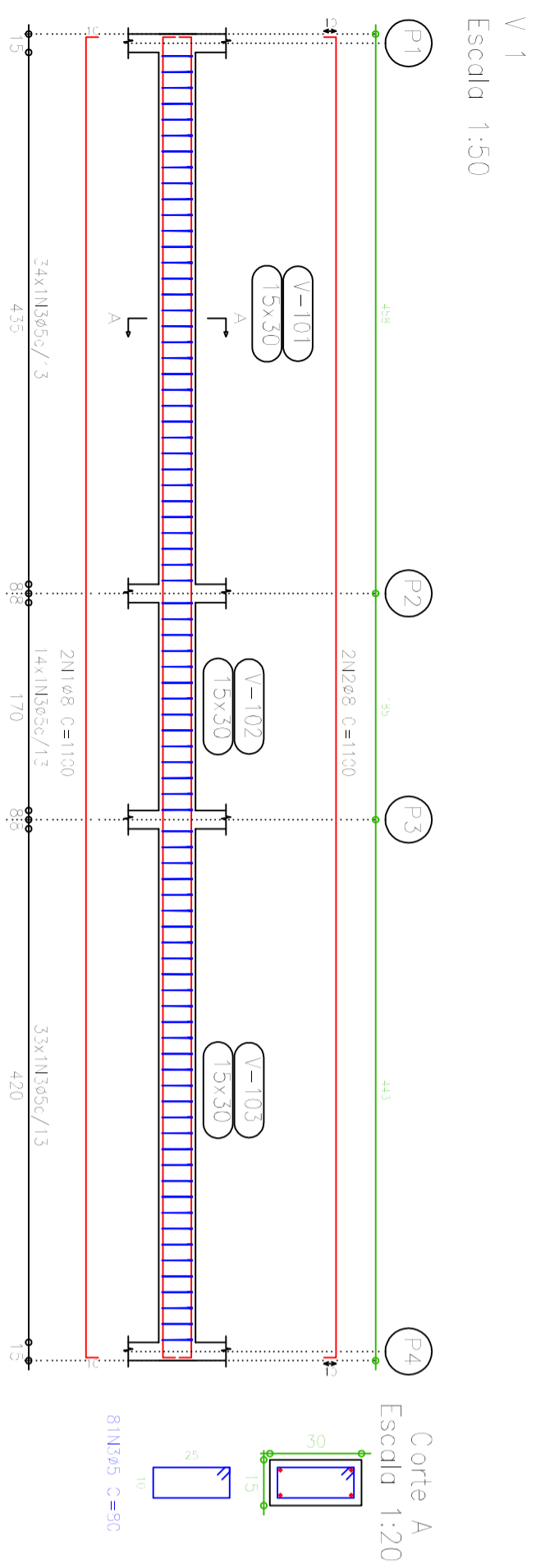


Resumo Aço	Comp. total	Peso+10%	Total
CA-50-A Ø6.3	14.2	4	
Ø8	377.8	163	
Ø10	17.6	12	
CA-60-B Ø5	566.9	98	
Total		98	277

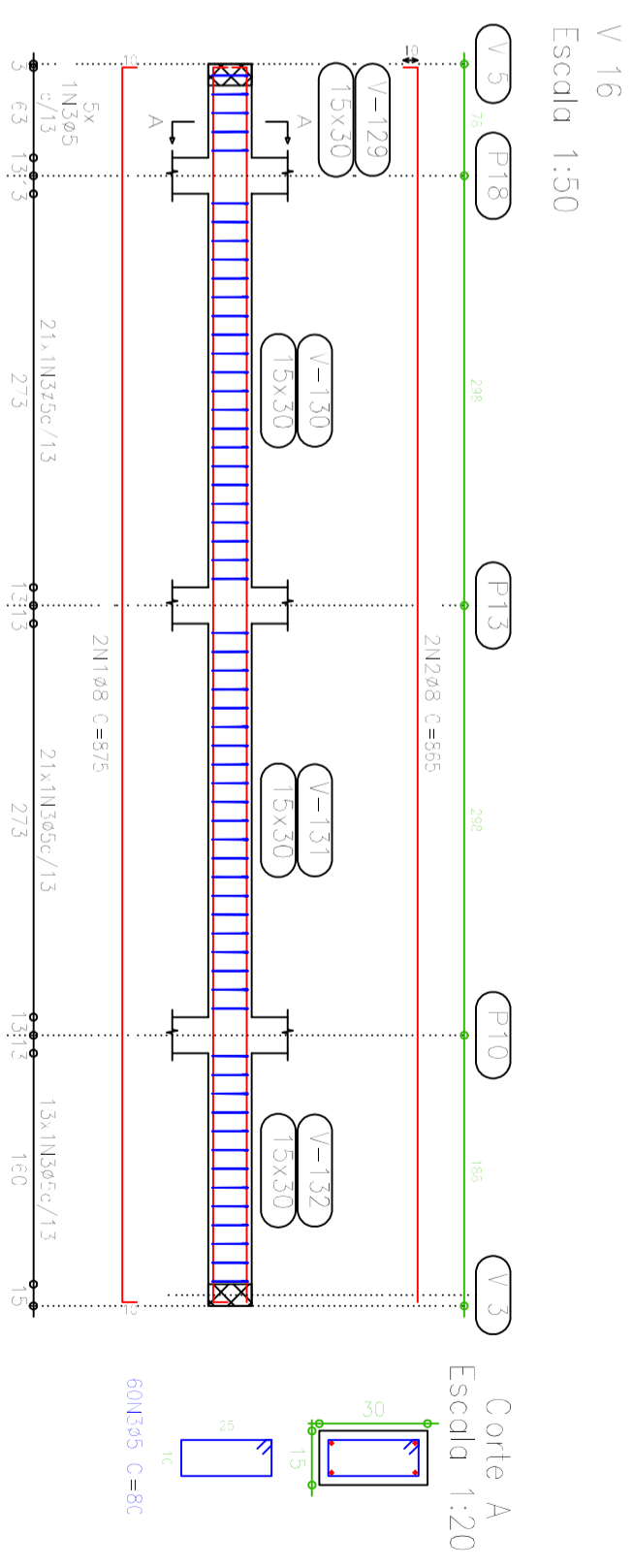
Elemento	Quantidade	Comprimento (m)	Volume (m³)	Peso (kg)
Forma Baldrame	13.50	4.36	0.77	
Forma Vigas	33.67			
Formas Escalares	60.97	4.36	2.77	
Total	108.14	9.49	3.54	13.28

Baldrame - Quantidade: 14.20 m
Desenho de vigas
Concreto: C20, em geral
Aço: CA-50-A e CA-60-B
Escala: 1:50
Escala seções: 1:20

Elemento	Pos.	Diam.	Q.	Doç.	Relat.	Doç.	Comp.	Total	CA-50-A	CA-60-B	
V 1	1	Ø8	2	10	1080	10	1100	2200	8.6		
	2	Ø8	2	10	1080	10	1100	2200	8.6		
	3	Ø5	81	90	5480	90	5480	10.2			
V 2	4	Ø8	2	10	560	10	580	1160	4.6		
	5	Ø8	2	10	560	10	580	1160	4.6		
	6	Ø5	41	50	3280	50	3280	5.1			
	Total+0%:									10.1	5.5
	Total+0%:									24.2	13.6
V 3	1	Ø8	2	10	1100	10	1110	2220	8.7		
	2	Ø8	2	10	1100	10	1110	2220	8.7		
	3	Ø8	2	10	1100	10	1110	2220	8.7		
	4	Ø8	2	10	280	10	290	580	2.3		
	5	Ø5	52	90	3920	90	3920	12.4			
Total+0%:									34.8	17.4	
Total+0%:									59.0	31.0	
V 4	1	Ø8	2	10	830	10	840	1680	6.6		
	2	Ø8	2	10	830	10	840	1680	6.6		
	3	Ø8	2	10	830	10	840	1680	6.6		
	4	Ø8	2	10	410	10	420	840	3.3		
	5	Ø5	69	90	5820	90	5820	11.2			
Total+0%:									21.8	12.3	
Total+0%:									83.3	42.7	
V 5	6	Ø8	2	10	1040	10	1060	2120	8.3		
	7	Ø8	2	10	1040	10	1060	2120	8.3		
	8	Ø5	77	90	6930	90	6930	10.7			
	Total+0%:									18.3	10.7
	Total+0%:									102.6	53.4
V 6	7	Ø8	2	10	245	10	265	530	2.1		
	8	Ø8	2	10	245	10	265	530	2.1		
	9	Ø5	16	78	1248	78	1248	2.0			
	Total+0%:									4.6	2.2
	Total+0%:									107.2	55.6
V 7	10	Ø8	2	10	675	10	695	1390	5.5		
	11	Ø8	2	10	675	10	695	1390	5.5		
	12	Ø5	48	90	3840	90	3840	6.0			
	Total+0%:									12.1	6.5
	Total+0%:									119.3	62.1
V 8	13	Ø8	2	10	90	10	210	420	1.6		
	14	Ø8	2	10	85	10	195	390	1.5		
	15	Ø5	12	90	960	90	960	1.5			
	Total+0%:									3.4	1.7
	Total+0%:									122.7	64.3
V 9	16	Ø8	2	10	310	10	330	660	2.6		
	17	Ø8	2	10	310	10	330	660	2.6		
	18	Ø5	21	90	1890	90	1890	2.5			
	Total+0%:									5.7	2.9
	Total+0%:									128.4	67.2
V 10	9	Ø8	2	10	305	10	325	650	1.8		
	10	Ø8	2	10	205	10	225	450	1.8		
	11	Ø5	14	90	1260	90	1260	1.8			
	Total+0%:									4.0	2.9
	Total+0%:									132.4	70.1
V 11	1	Ø8	2	10	310	10	330	660	2.6		
	2	Ø6.3	2	8	310	8	325	652	1.6		
	3	Ø5	22	90	1760	90	1760	2.8			
	Total+0%:									4.6	3.1
	Total+0%:									137.0	73.2
V 12	4	Ø6.3	2	9	192	8	192	384	0.9		
	5	Ø8	2	10	75	10	195	390	1.5		
	6	Ø5	12	90	960	90	960	1.5			
	Total+0%:									2.6	1.7
	Total+0%:									139.6	74.9
V 13	9	Ø8	2	10	855	10	875	1750	6.9		
	10	Ø10	2	12	855	12	879	1758	11.0		
	11	Ø5	62	90	4960	90	4960	7.8			
	Total+0%:									19.7	6.5
	Total+0%:									159.3	86.4
V 15	8	Ø8	2	10	310	10	330	660	2.6		
	9	Ø8	2	10	310	10	330	660	2.6		
	10	Ø5	22	90	1760	90	1760	2.8			
	Total+0%:									5.7	3.4
	Total+0%:									165.0	89.8
V 16	1	Ø8	2	10	855	10	875	1750	6.9		
	2	Ø8	2	10	855	10	865	1730	6.8		
	3	Ø5	60	90	4800	90	4800	7.5			
	Total+0%:									15.1	6.5
	Total+0%:									180.1	96.3



Corte A
Escada 1:20



Corte A
Escada 1:20