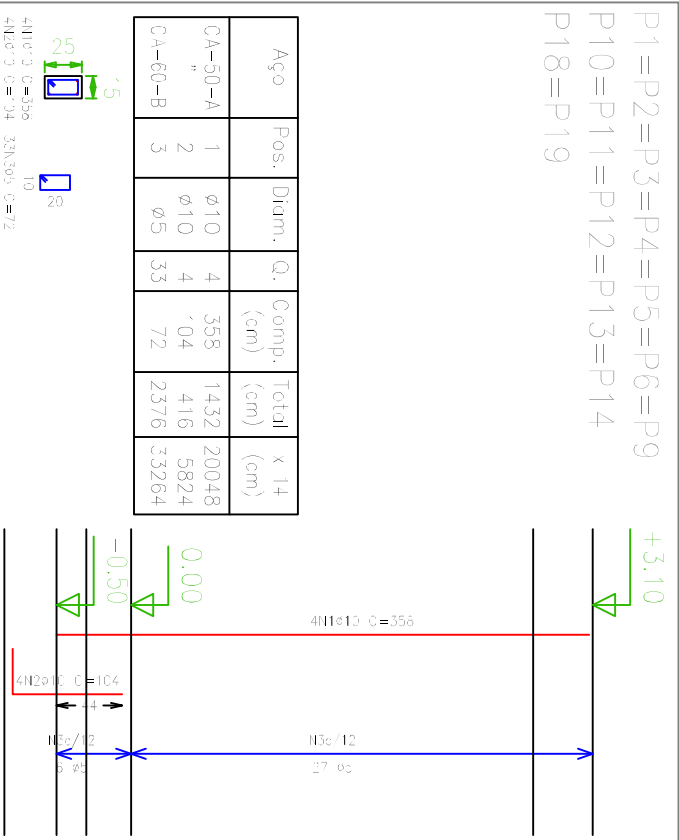


Pilares que terminam em
Cobertura
Concreto: C20, em geral
Aço: CA-50-A e CA-60-B
Escala: 1:50

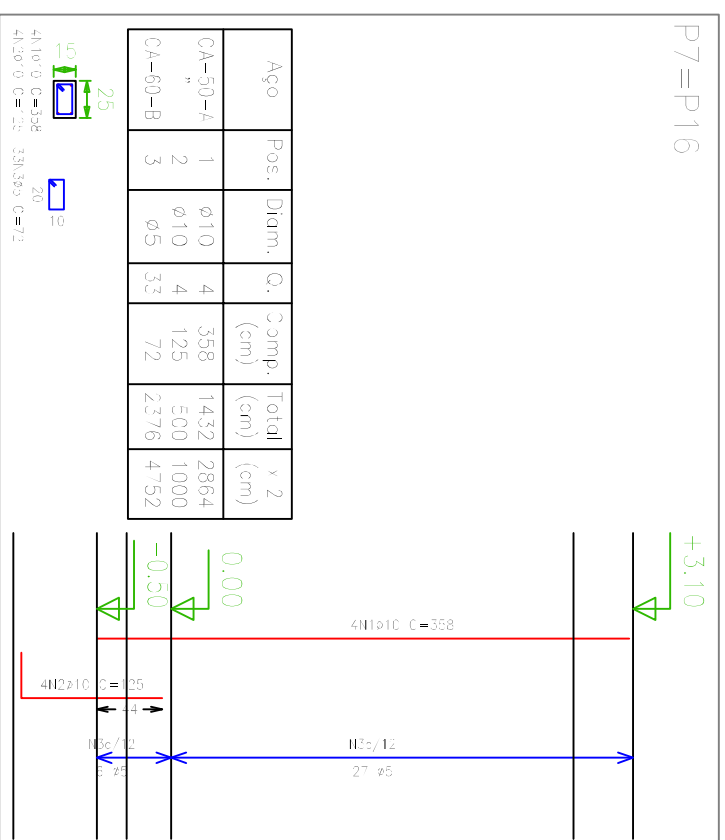
P1=P2=P3=P4=P5=P6=P9
P10=P11=P12=P13=P14
P18=P19

Aço	Pos.	Diam.	Q.	Comp. (cm)	Total (cm)	x 14
CA-50-A	1	ø10	4	358	1432	20048
"	2	ø10	4	104	416	5824
CA-60-B	3	ø5	33	72	2376	33264



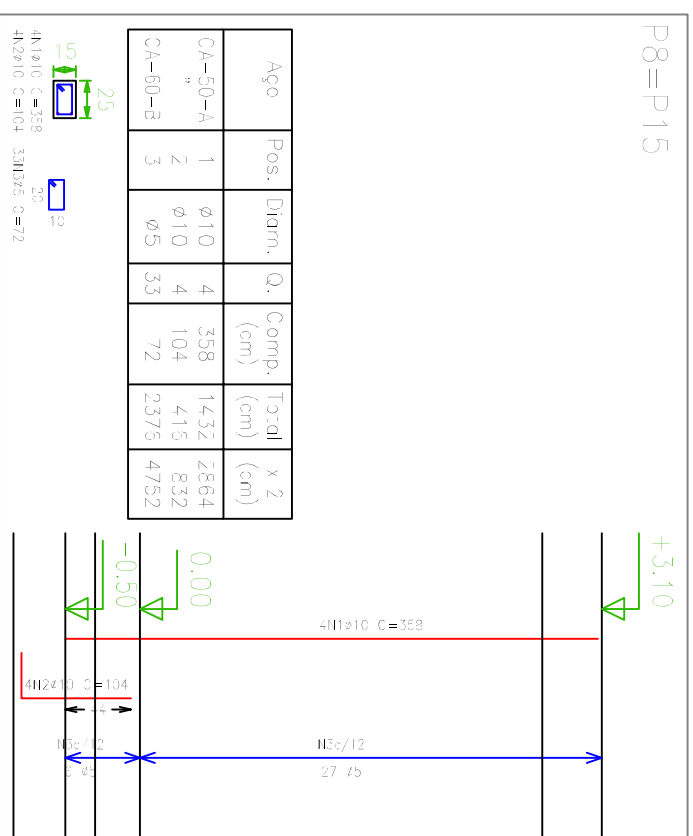
P7=P16

Aço	Pos.	Diam.	Q.	Comp. (cm)	Total (cm)	x 2
CA-50-A	1	ø10	4	358	1432	2864
"	2	ø10	4	125	500	1000
CA-60-B	3	ø5	33	72	2376	4752



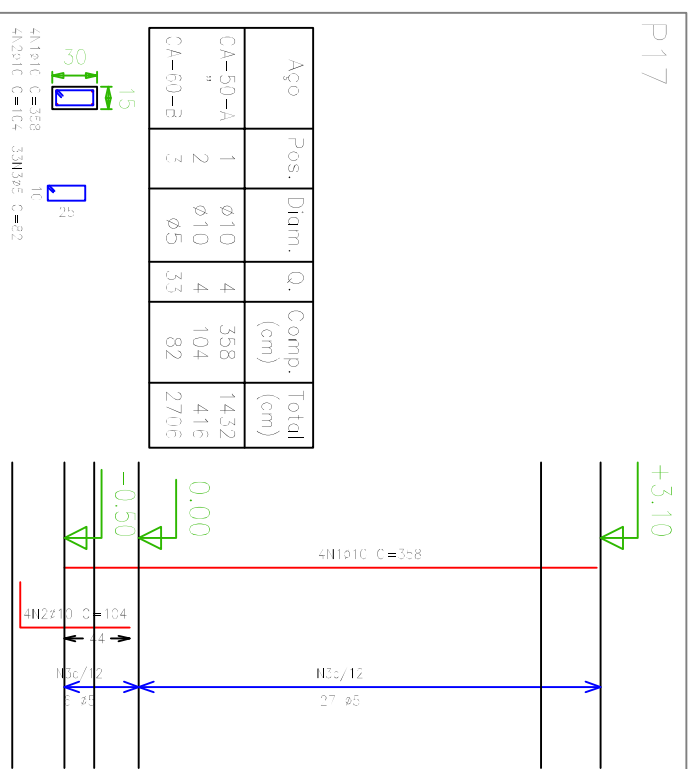
P8=P15

Aço	Pos.	Diam.	Q.	Comp. (cm)	Total (cm)	x 2
CA-50-A	1	ø10	4	358	1432	2864
"	2	ø10	4	104	416	832
CA-60-B	3	ø5	33	72	2376	4752



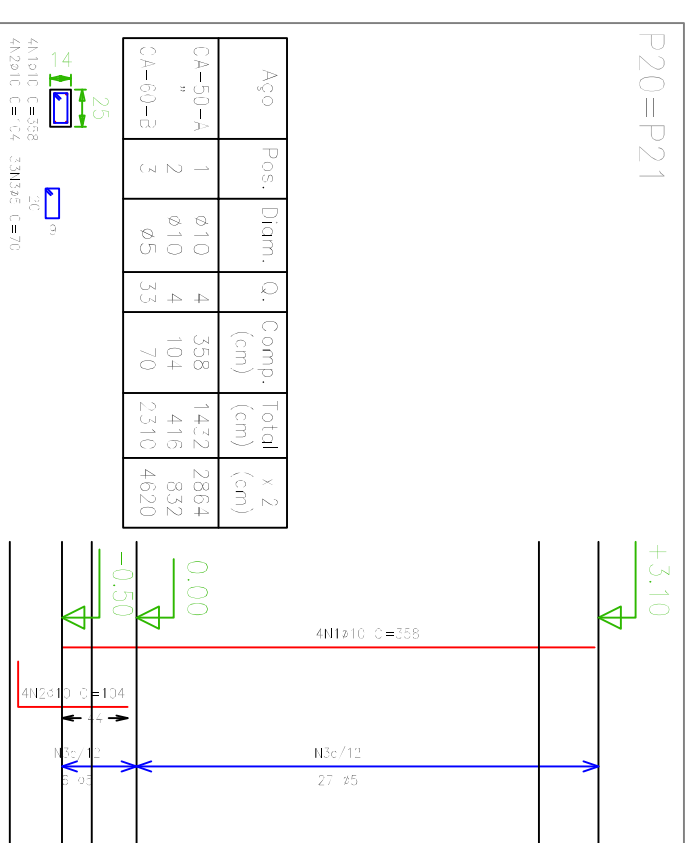
P17

Aço	Pos.	Diam.	Q.	Comp. (cm)	Total (cm)
CA-50-A	1	ø10	4	358	1432
"	2	ø10	4	104	416
CA-60-B	3	ø5	33	82	2706



P20=P21

Aço	Pos.	Diam.	Q.	Comp. (cm)	Total (cm)	x 2
CA-50-A	1	ø10	4	358	1432	2864
"	2	ø10	4	104	416	832
CA-60-B	3	ø5	33	70	2310	4620



Resumo Aço Cobertura Pilares	Comp. total (m)	Peso+10% (kg)	Total
CA-50-A ø10	389.8	269	269
CA-60-B ø5	500.9	87	87
Total			356

prancha

4/6

ESTRUTURAL

projeto

A3