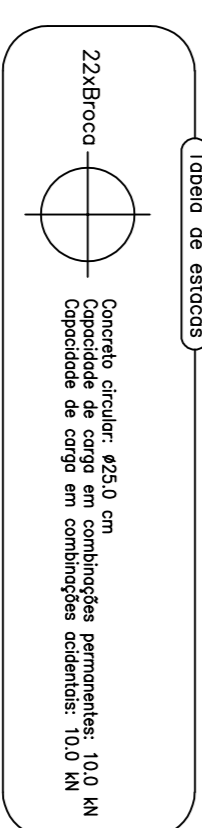
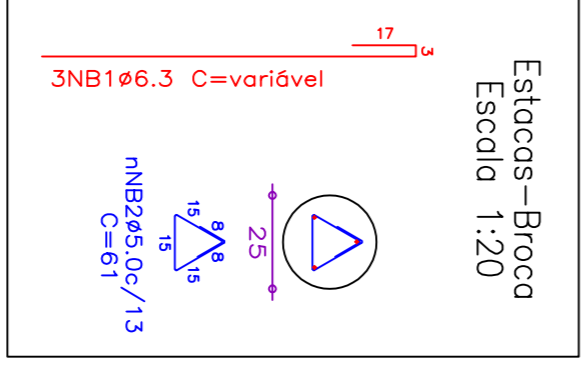
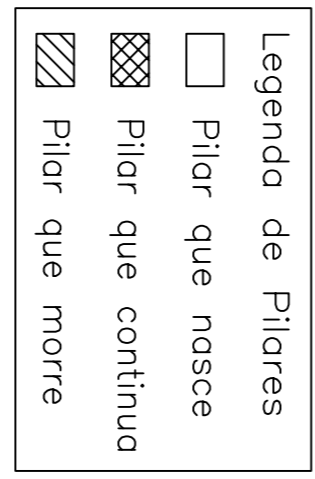


Elemento	Pos	Diam. (cm)	Q (cm)	Dob (cm)	Ret (cm)	Dob Comp (cm)	Ret Comp (cm)	Total (cm)	CA-50-A (kg)	CA-60-B (kg)
P1=P2=P4	1	ø10	2	158	158	158	316	2.0	158	2.0
	2	ø10	2	154	154	154	308	1.9	154	1.9
	3	ø10	4	30	201	201	201	2.4	201	2.4
	4	ø10	4	30	67	67	67	0.8	67	0.8
	5	ø4.2	3	67	67	67	67	0.2	67	0.2
Total+10%: 6.7										
P3, P7, P8, P9 e P11	1	ø10	2	158	158	158	316	2.0	158	2.0
	2	ø10	2	154	154	154	308	1.9	154	1.9
	3	ø10	4	30	201	201	201	2.4	201	2.4
	4	ø10	4	30	67	67	67	0.8	67	0.8
	5	ø4.2	3	67	67	67	67	0.2	67	0.2
Total+10%: 6.7										
P5	1	ø10	2	158	158	158	316	2.0	158	2.0
	2	ø10	2	154	154	154	308	1.9	154	1.9
	3	ø10	4	30	201	201	201	2.4	201	2.4
	4	ø10	4	30	67	67	67	0.8	67	0.8
	5	ø4.2	3	67	67	67	67	0.2	67	0.2
Total+10%: 6.7										
P6	1	ø10	2	158	158	158	316	2.0	158	2.0
	2	ø10	2	154	154	154	308	1.9	154	1.9
	3	ø10	4	30	201	201	201	2.4	201	2.4
	4	ø10	4	30	67	67	67	0.8	67	0.8
	5	ø4.2	3	67	67	67	67	0.2	67	0.2
Total+10%: 6.7										
P10	1	ø10	2	158	158	158	316	2.0	158	2.0
	2	ø10	2	154	154	154	308	1.9	154	1.9
	3	ø10	4	30	201	201	201	2.4	201	2.4
	4	ø10	4	30	67	67	67	0.8	67	0.8
	5	ø4.2	3	67	67	67	67	0.2	67	0.2
Total+10%: 6.7										
P20-P21-P22-P23	1	ø10	2	158	158	158	316	2.0	158	2.0
	2	ø10	2	154	154	154	308	1.9	154	1.9
	3	ø10	4	30	201	201	201	2.4	201	2.4
	4	ø10	4	30	67	67	67	0.8	67	0.8
	5	ø4.2	3	67	67	67	67	0.2	67	0.2
Total+10%: 6.7										
P24-P25	1	ø10	2	158	158	158	316	2.0	158	2.0
	2	ø10	2	154	154	154	308	1.9	154	1.9
	3	ø10	4	30	201	201	201	2.4	201	2.4
	4	ø10	4	30	67	67	67	0.8	67	0.8
	5	ø4.2	3	67	67	67	67	0.2	67	0.2
Total+10%: 6.7										

Resumo Aço	Comp. (m)	Peso+10% (kg)	Total (kg)
Fundação	68.3	30	287
CA-50-A	ø10	371.6	257
CA-60-B	ø4.2	50.6	6
Total			293



Estacas-Broca na profundidade de encontro com solo resistente, ou na profundidade mínima de 4m.