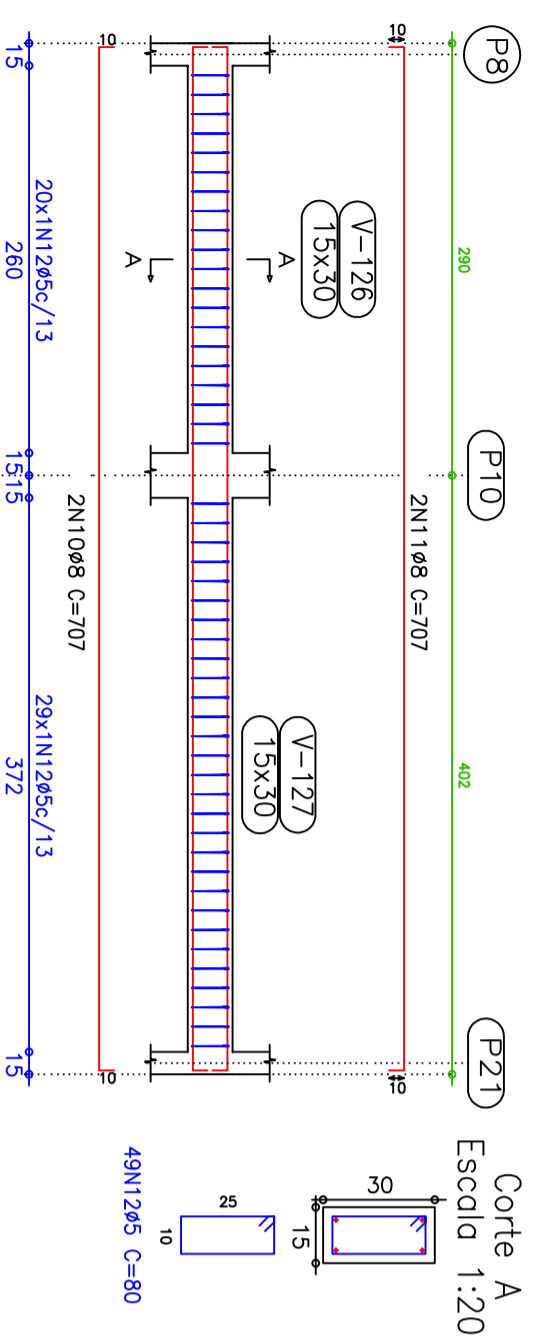
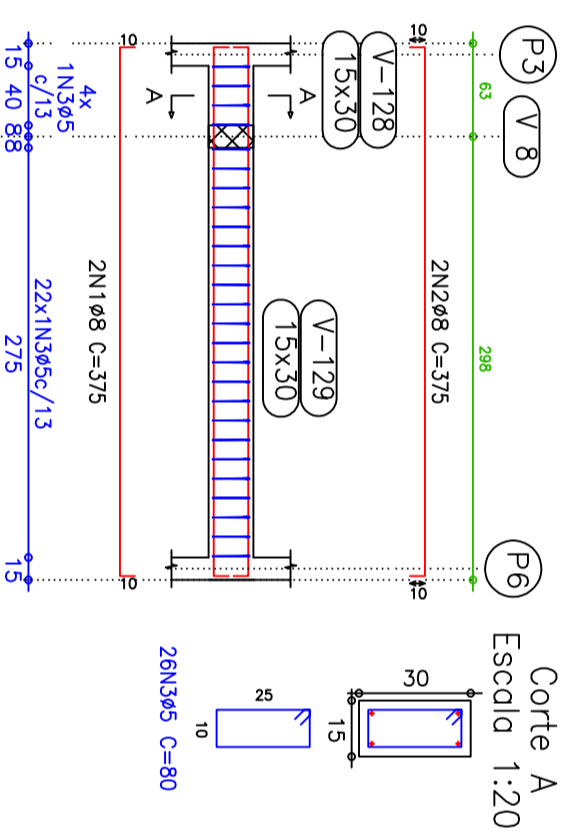


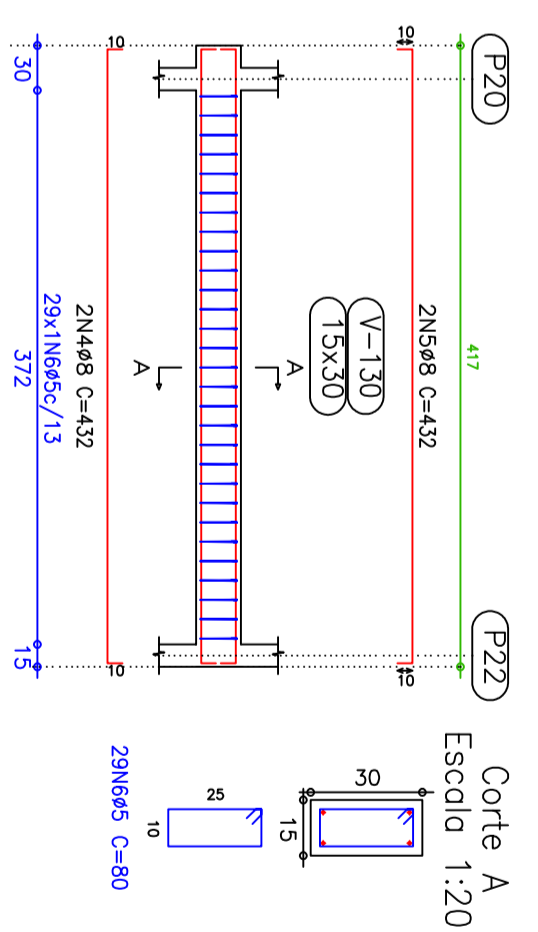
V 15  
Escalã 1:50



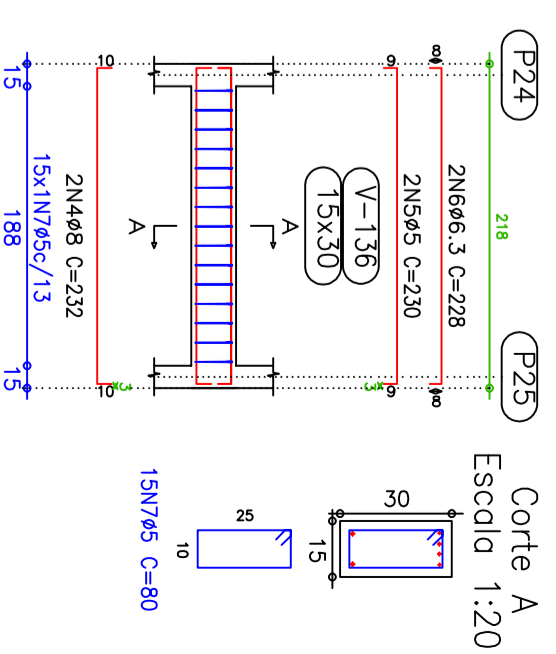
V 16  
Escalã 1:50



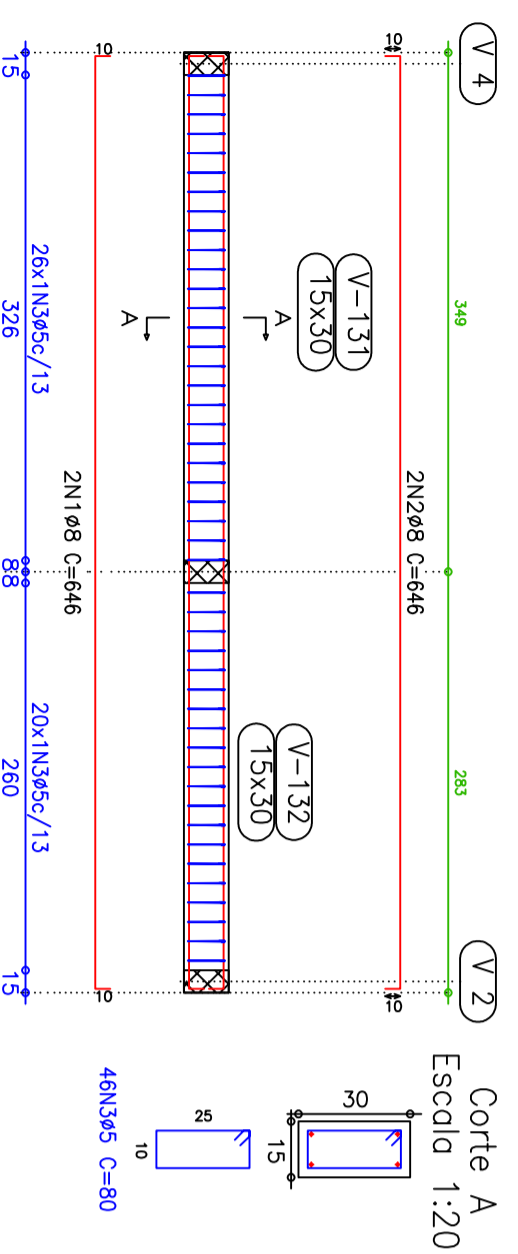
V 17  
Escalã 1:50



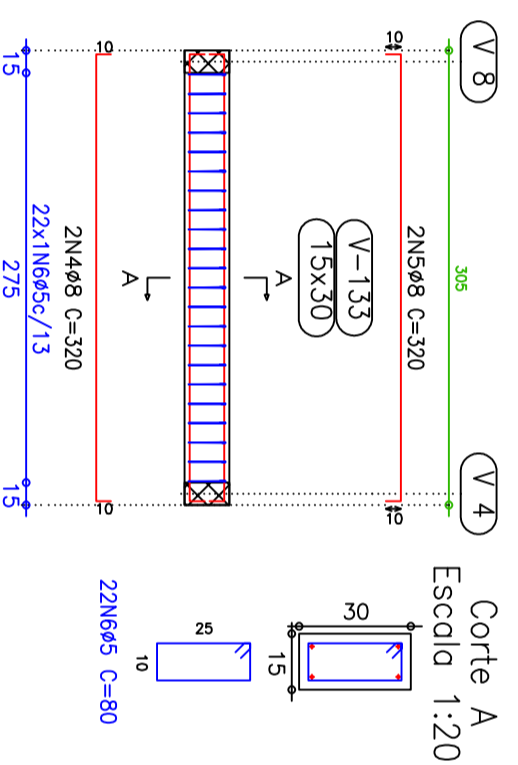
V 21  
Escalã 1:50



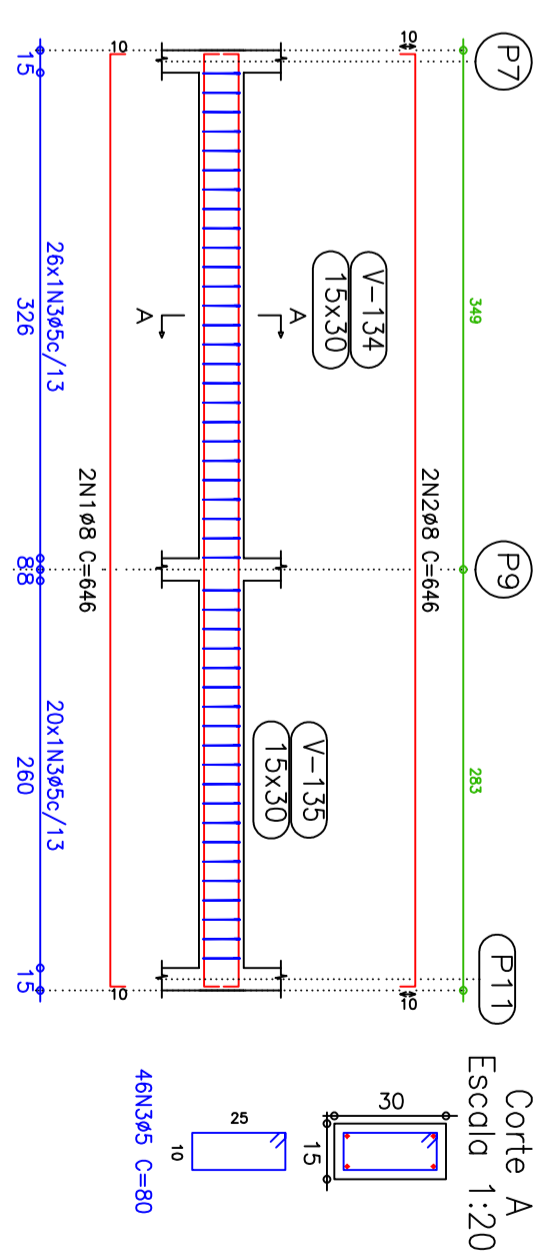
V 18  
Escalã 1:50



V 19  
Escalã 1:50



V 20  
Escalã 1:50



Baldrame  
Desenho de vigas  
Concreto: C20, em geral  
Aço: CA-50-A e CA-60-B  
Escalã seções: 1:20

P23=P24=P25

Aço	Pos.	Diã.	Q.	Comp.	Total	x 3
		(cm)	(cm)	(cm)	(cm)	
CA-50-A	1	Ø10	4	180	720	2160
CA-60-B	2	Ø10	4	104	416	1248
CA-60-B	3	Ø5	17	52	884	2652
4N1Ø10 C=180 4N2Ø10 C=104 4N2Ø10 C=104 17NØ5 C=82						

Resumo Aço Cinta do Muro Pilares	Comp. total (m)	Peso+10% (kg)	Total
CA-50-A Ø10	34.1	24	24
CA-60-B Ø5	26.5	5	5
Total			29

Pilares que terminam em  
Cinta do Muro  
Concreto: C20, em geral  
Aço: CA-50-A e CA-60-B  
Escalã: 1:50