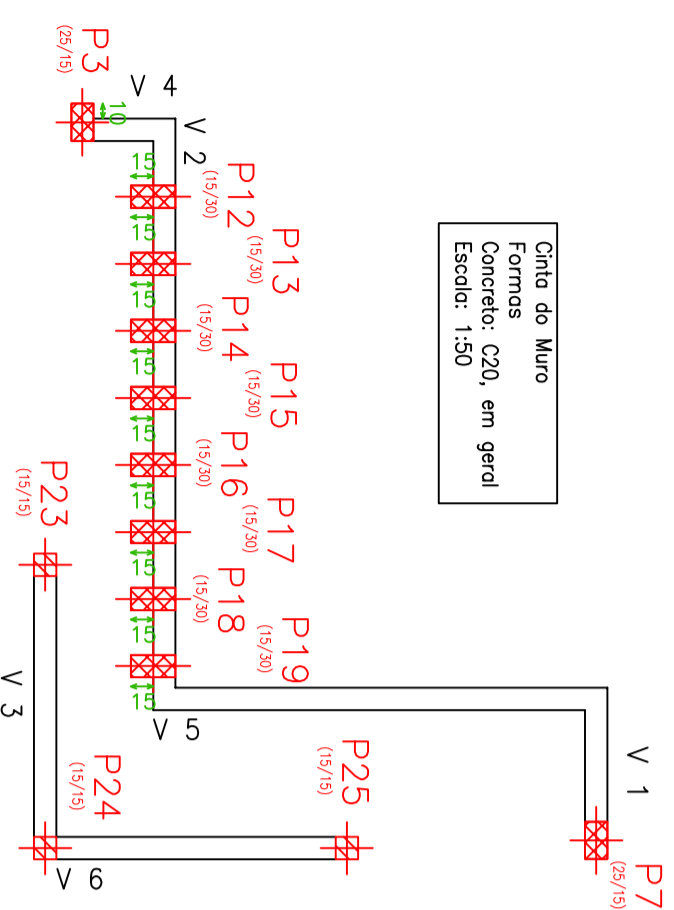


Cinta do Muro  
Formas: C20, em geral  
Escala: 1:50

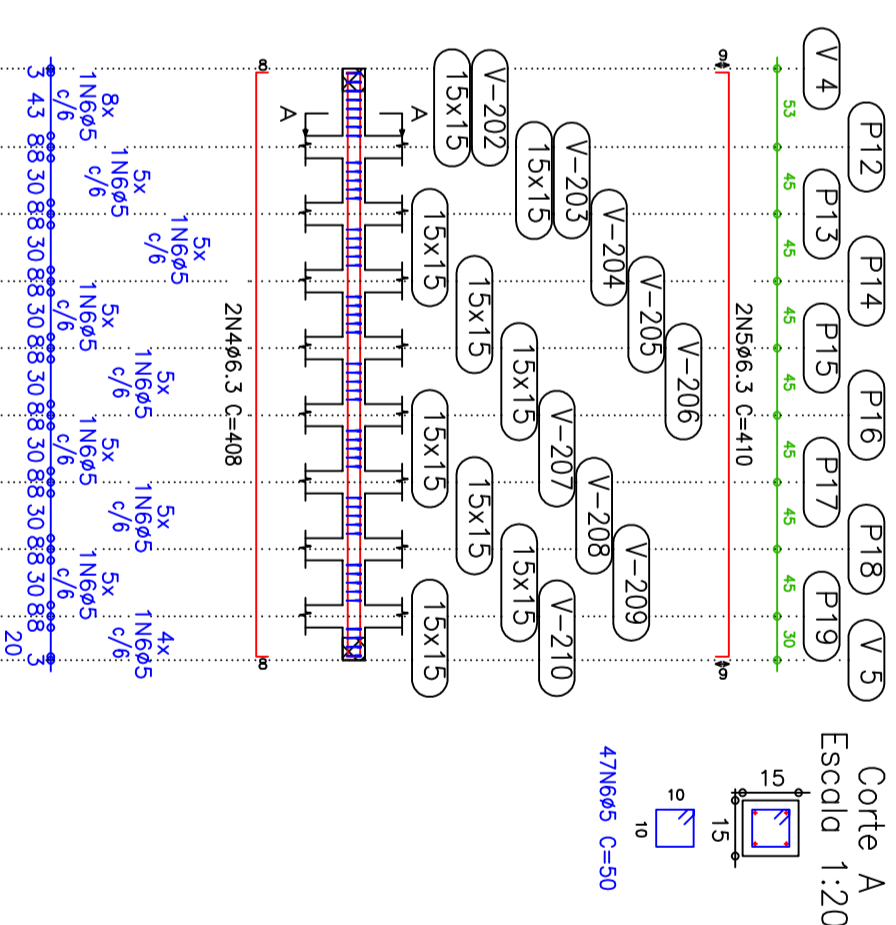


Elemento	Pos.	Diam.	Q. (cm)	Retid (cm)	Dob. (cm)	Comp. (cm)	Total (cm)	CA-50 (kg)	AICA-60-B (kg)	
V 1	1	ø6,3	2	8	110	8	126	252	0,6	
	2	ø6,3	2	9	110	8	127	254	0,6	
	3	ø5	15				750		1,2	
Total+10%:									1,3	
V 2	4	ø6,3	2	8	392	8	408	816	2,0	
	5	ø6,3	2	9	392	9	410	820	2,0	
	6	ø5	47				50	2350	3,7	
	Total+10%:									4,4
	V 3	7	ø6,3	2	8	200	8	216	432	1,1
		8	ø6,3	2	8	200	8	216	432	1,1
9		ø5	30				50	1500	2,4	
Total+10%:									2,4	
V 4	10	ø6,3	2	8	65	8	81	162	0,4	
	11	ø5	2	6	65	6	77	154	0,2	
	12	ø5	7				50	350	0,5	
Total+10%:									0,4	
V 5	13	ø6,3	2	8	300	8	316	632	1,6	
	14	ø6,3	2	8	300	8	316	632	1,6	
	15	ø5	46				50	2300	3,6	
	Total+10%:									3,5
	V 6	16	ø6,3	2	8	212	8	228	456	1,1
17		ø6,3	2	8	212	8	228	456	1,1	
18		ø5	32				50	1600	2,5	
Total+10%:									2,4	

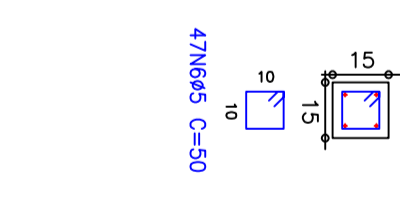
Resumo Aço	Comp. total	Peso+10%	Total
Cinta do Muro Vigas			
CA-50-A ø6,3	53,4	15	15
CA-60-B ø5	90,0	16	16
<b>Total</b>			<b>31</b>

Cinta do Muro - Superfície total: 2,50 m <sup>2</sup>			
Elemento	Formas (m <sup>2</sup> )	Volume (m <sup>3</sup> )	Barra (kg)
Vigas fundo	1,57	0,27	30
Forno lateral	3,13		
Pilares (Sup. Formas)	2,10	0,09	29
<b>Total</b>	<b>6,80</b>	<b>0,36</b>	<b>59</b>
Índices (por m <sup>2</sup> )	2,720	0,144	23,60

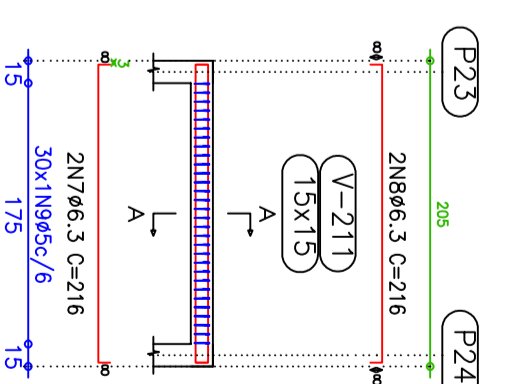
V 2  
Escala 1:50



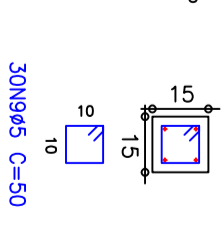
Corte A  
Escala 1:20



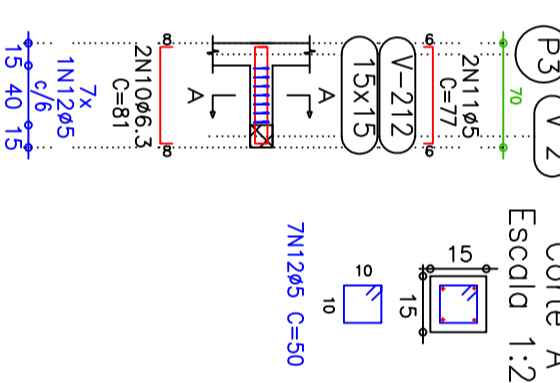
V 3  
Escala 1:50



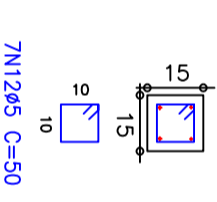
Corte A  
Escala 1:20



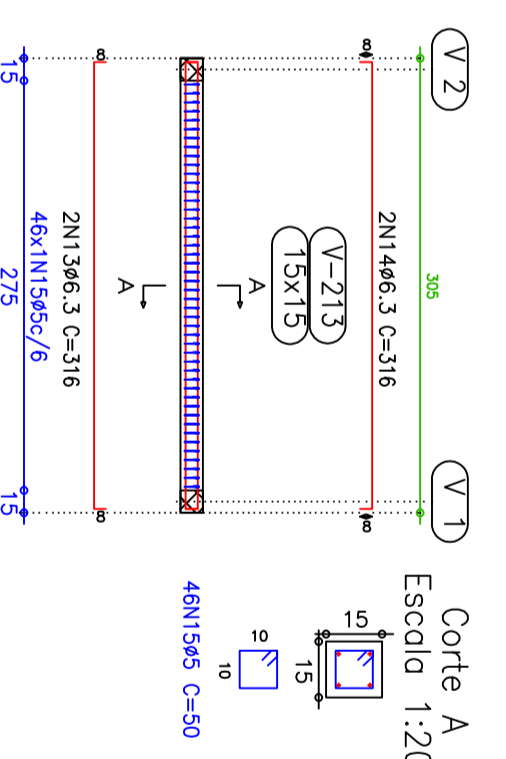
V 4  
Escala 1:50



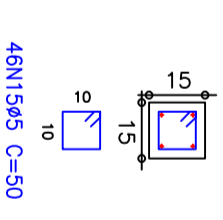
Corte A  
Escala 1:20



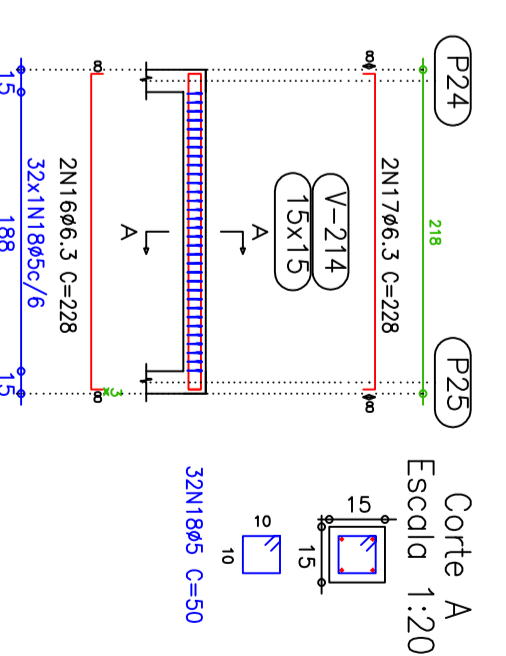
V 5  
Escala 1:50



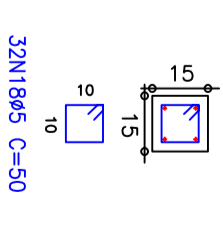
Corte A  
Escala 1:20



V 6  
Escala 1:50



Corte A  
Escala 1:20



Cinta do Muro  
Desenho de vigas  
Concreto: C20, em geral  
Aço: CA-50-A e CA-60-B  
Escala vigas: 1:50  
Escala seções: 1:20

prancha

4/7

projeto

ESTRUTURAL

A2