

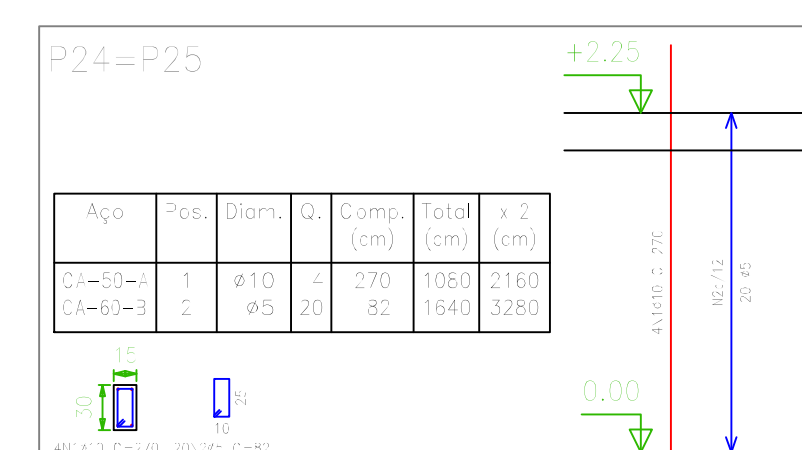
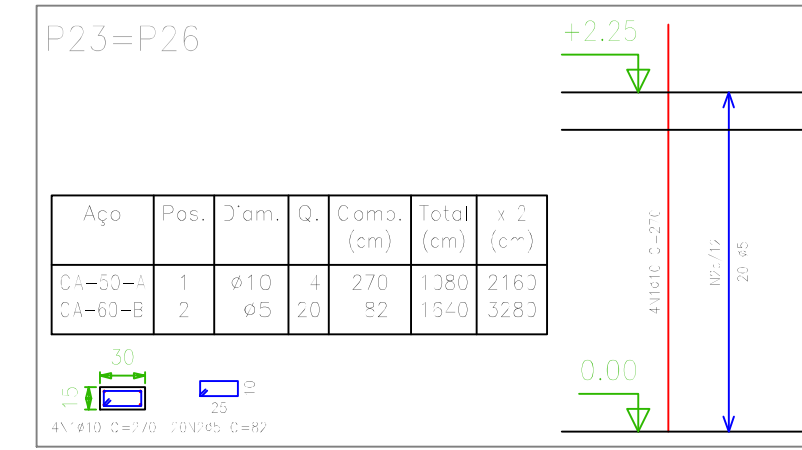
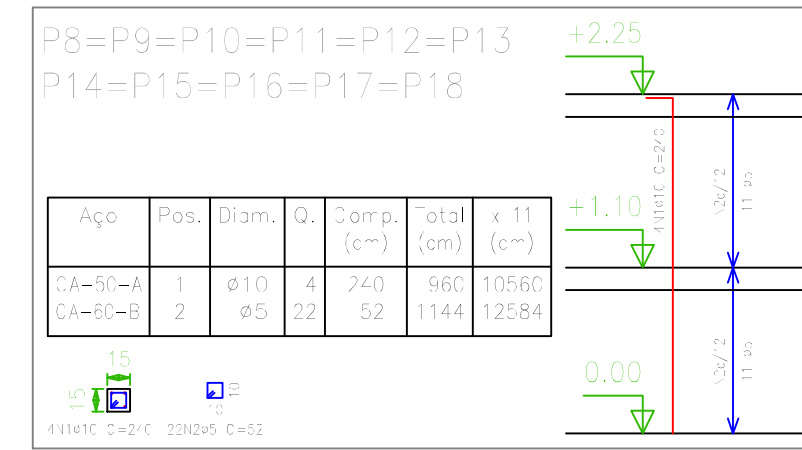


Elemento	Pos.	Diam.	Q.	Comp.	Ret.	Comp.	Total	CA-50-A	CA-60-B
(cm)	(cm)	(cm)	(cm)	(cm)	(cm)	(cm)	(kg)	(kg)	(kg)
V 1	1	ø6,3	2	8	385	8	401	802	2,0
	2	ø6,3	2	8	385	8	401	802	2,0
	3	ø5	100				3000		4,7
Total+10%							4,4	4,7	
V 2=V 3	4	ø6,3	2	8	210	8	228	452	1,1
	5	ø6,3	2	8	210	8	228	452	1,1
	6	ø5	31				1500		2,4
Total+10%							2,4	2,6	
V 4	7	ø6,3	2	8	230	8	248	492	1,2
	8	ø6,3	2	8	230	8	248	492	1,2
	9	ø5	35				1500		2,7
Total+10%							2,9	3,0	
V 5	10	ø6,3	2	8	636	8	652	1304	3,2
	11	ø6,3	2	8	636	8	652	1304	3,2
	12	ø5	100				5000		7,9
Total+10%							7,0	7,7	
V 6	13	ø6,3	2	8	445	8	461	922	2,3
	14	ø6,3	2	8	445	8	461	922	2,3
	15	ø5	68				3400		5,3
Total+10%							5,1	5,8	

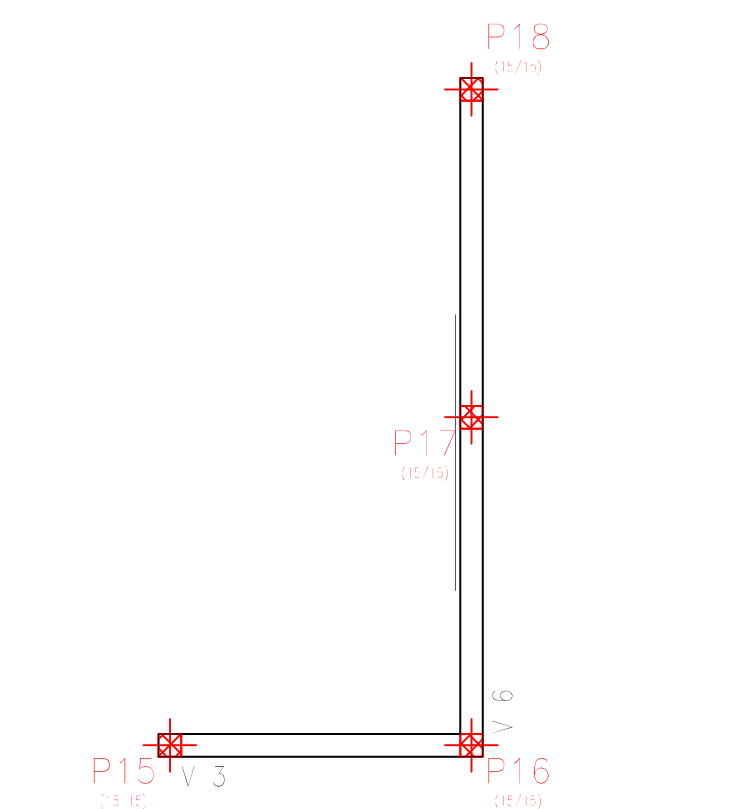
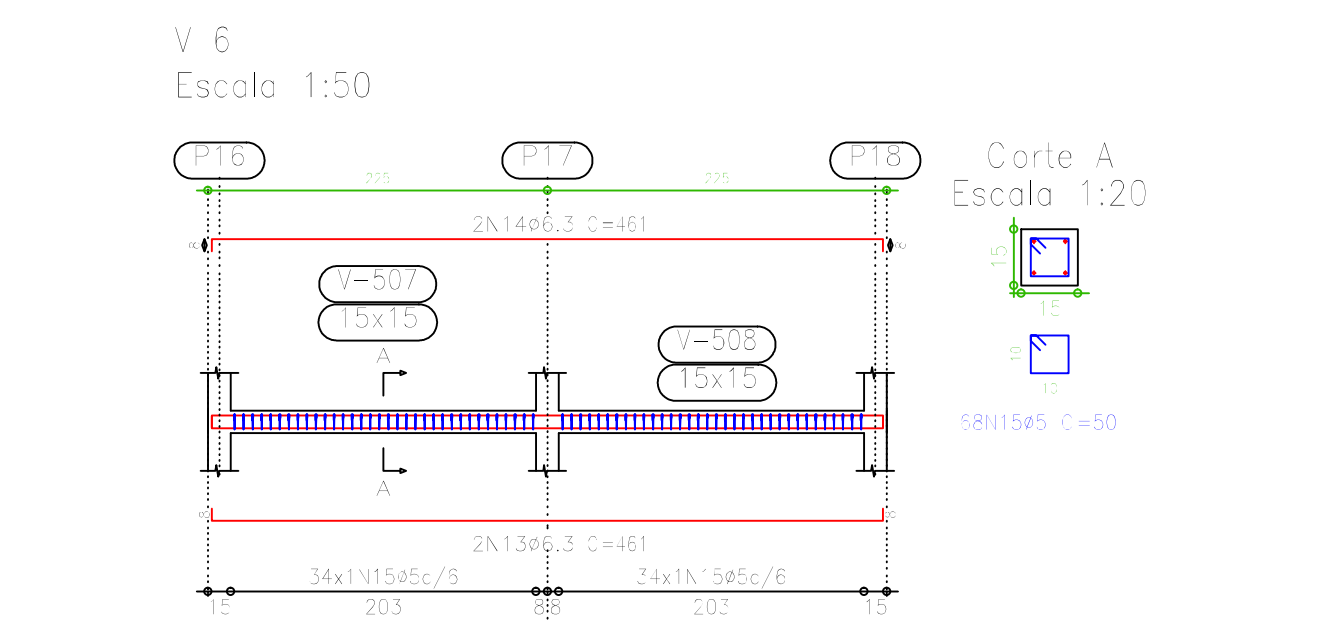
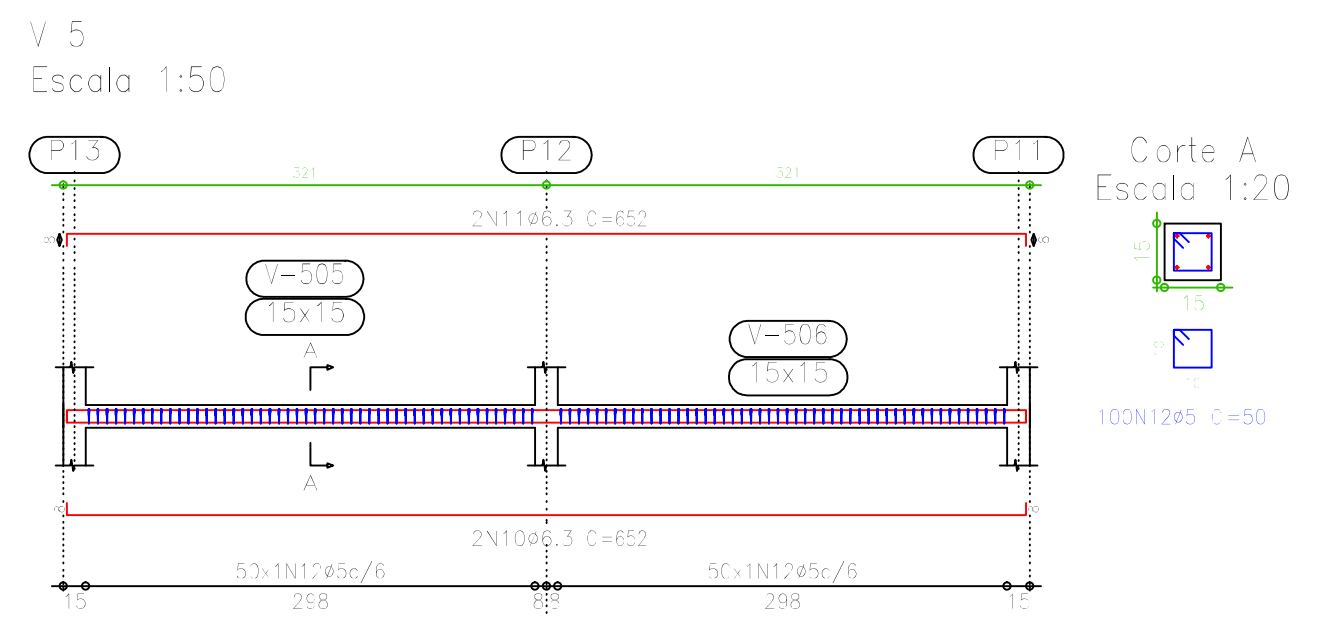
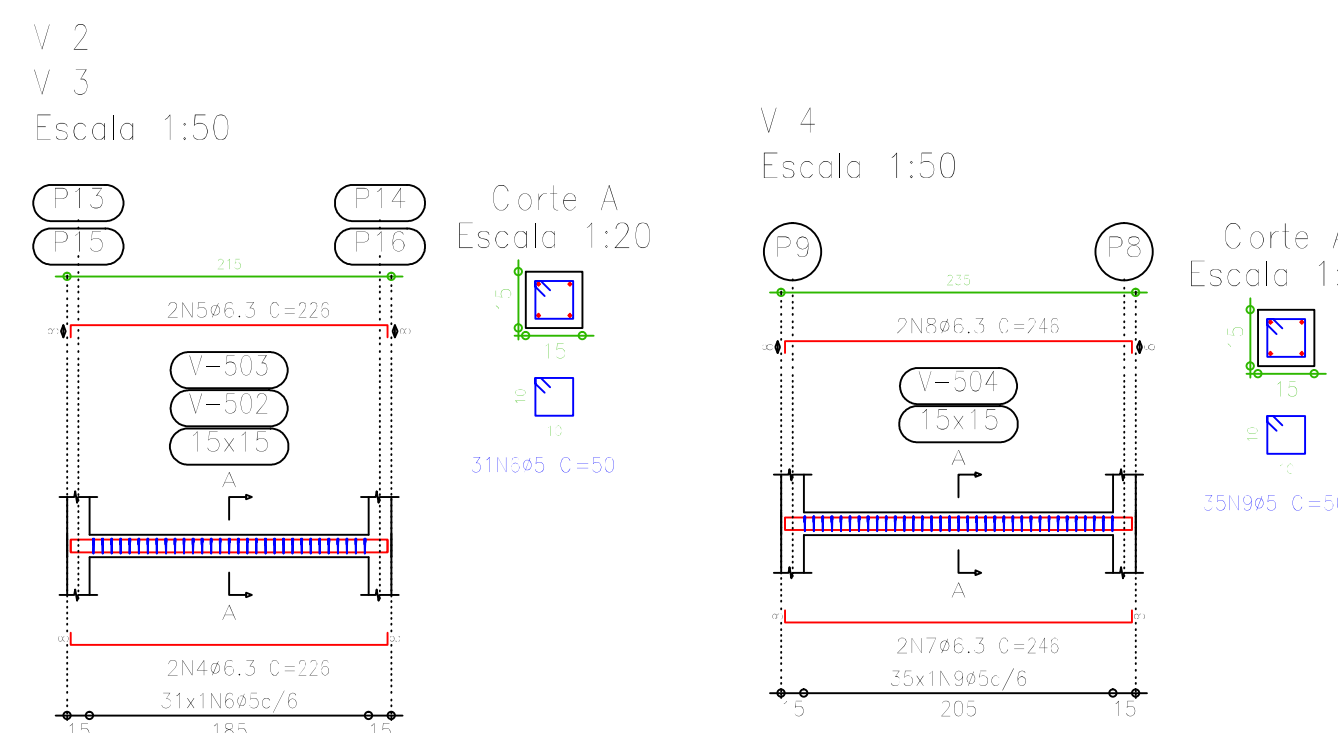
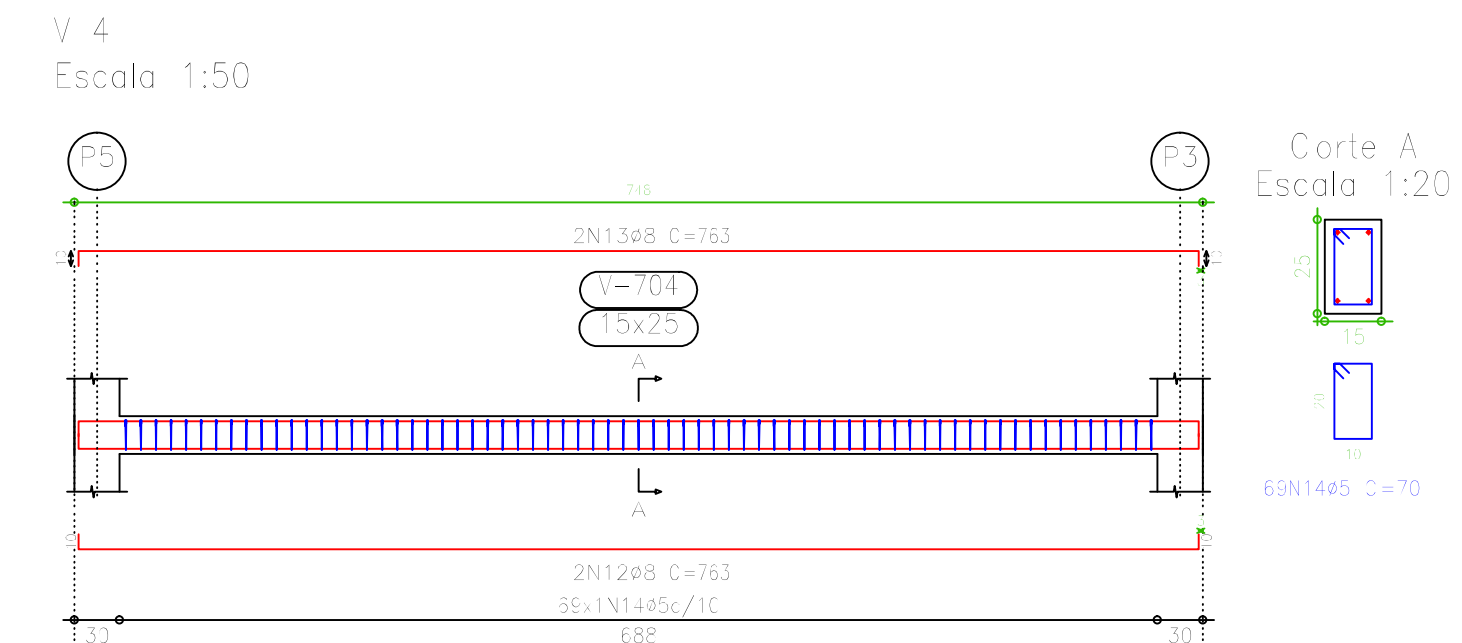
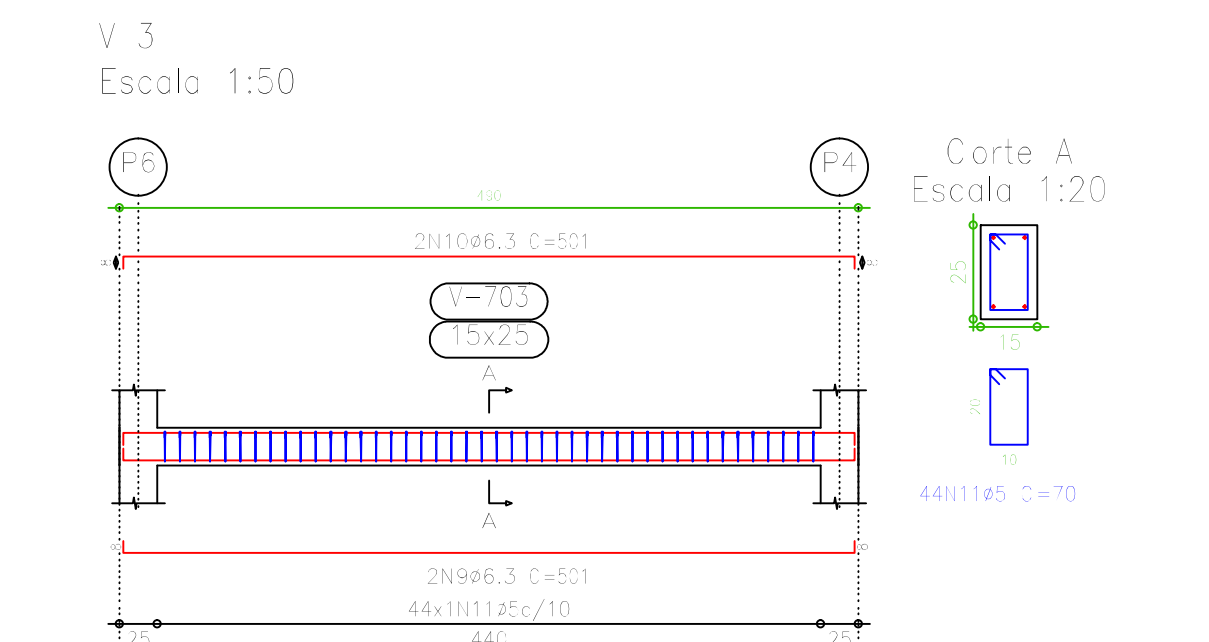
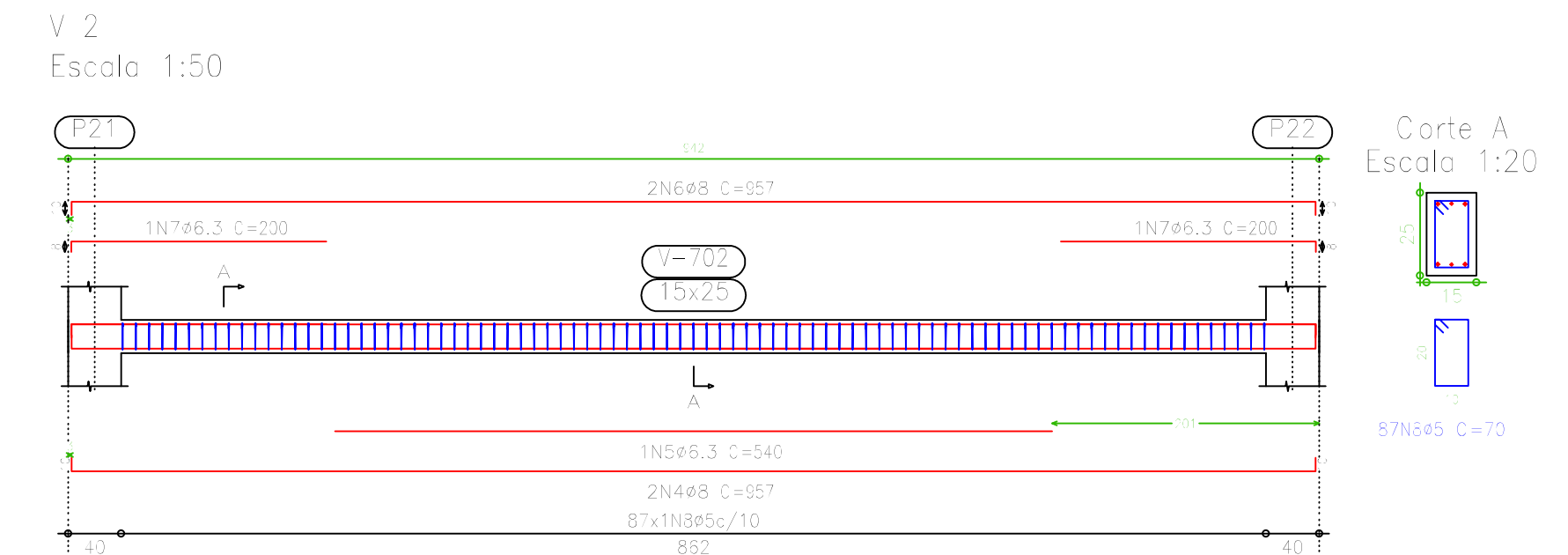
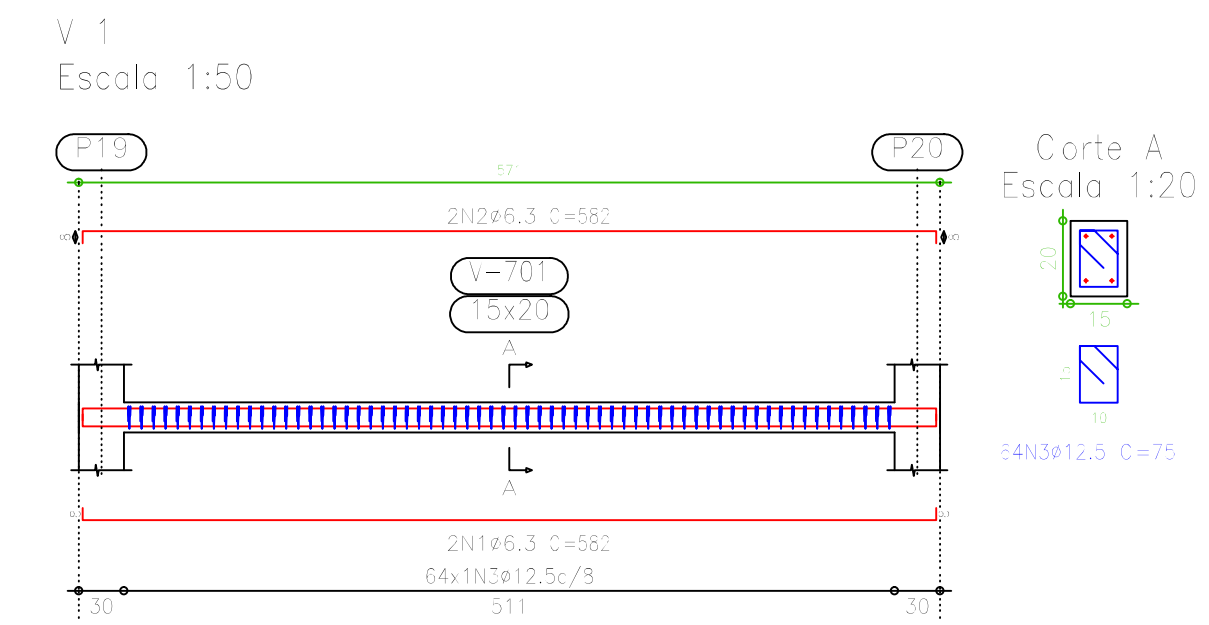
Pilares que terminam em Cinto dos Muros
 Concreto: C20, em geral
 Aço: CA-50-A e CA-60-B
 Escala: 1:50

Resumo Aço Amarração Muros Vigas	Comp. total (m)	Peso+10% (kg)	Total
CA-50-A ø6,3	88,5	24	24
CA-60-B ø5	162,5	28	28
Total			52

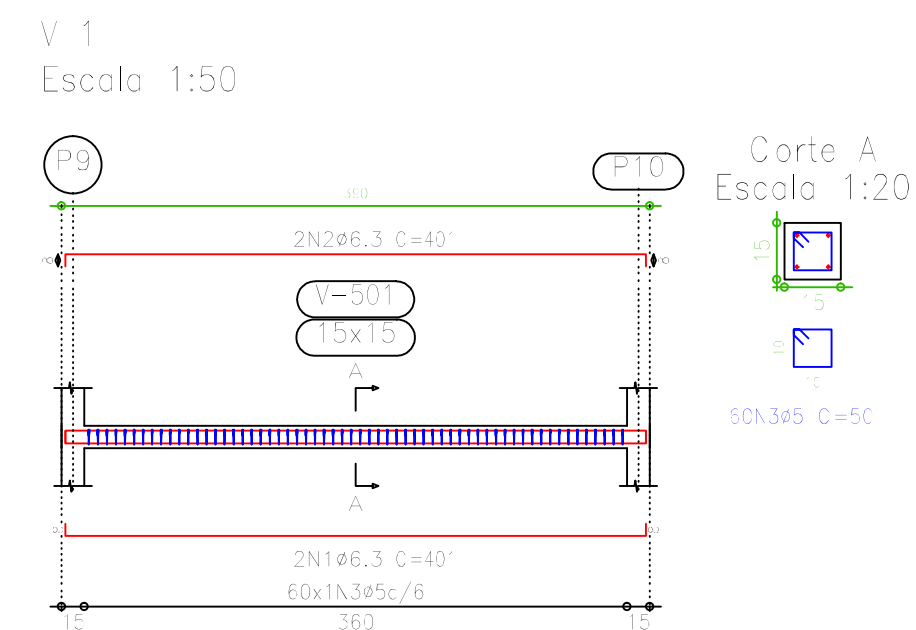
Amarração Muros - 4 pontos fixos 4,5 m			
Elemento	Quantidade	Compr. (m)	Peso (kg)
Viga Fundo	235	0,48	52
Forço lateral	581		
Muros (4 pontos)	600		
Total	1416	0,48	52
Muros (4 pontos)	2300	0,110	120



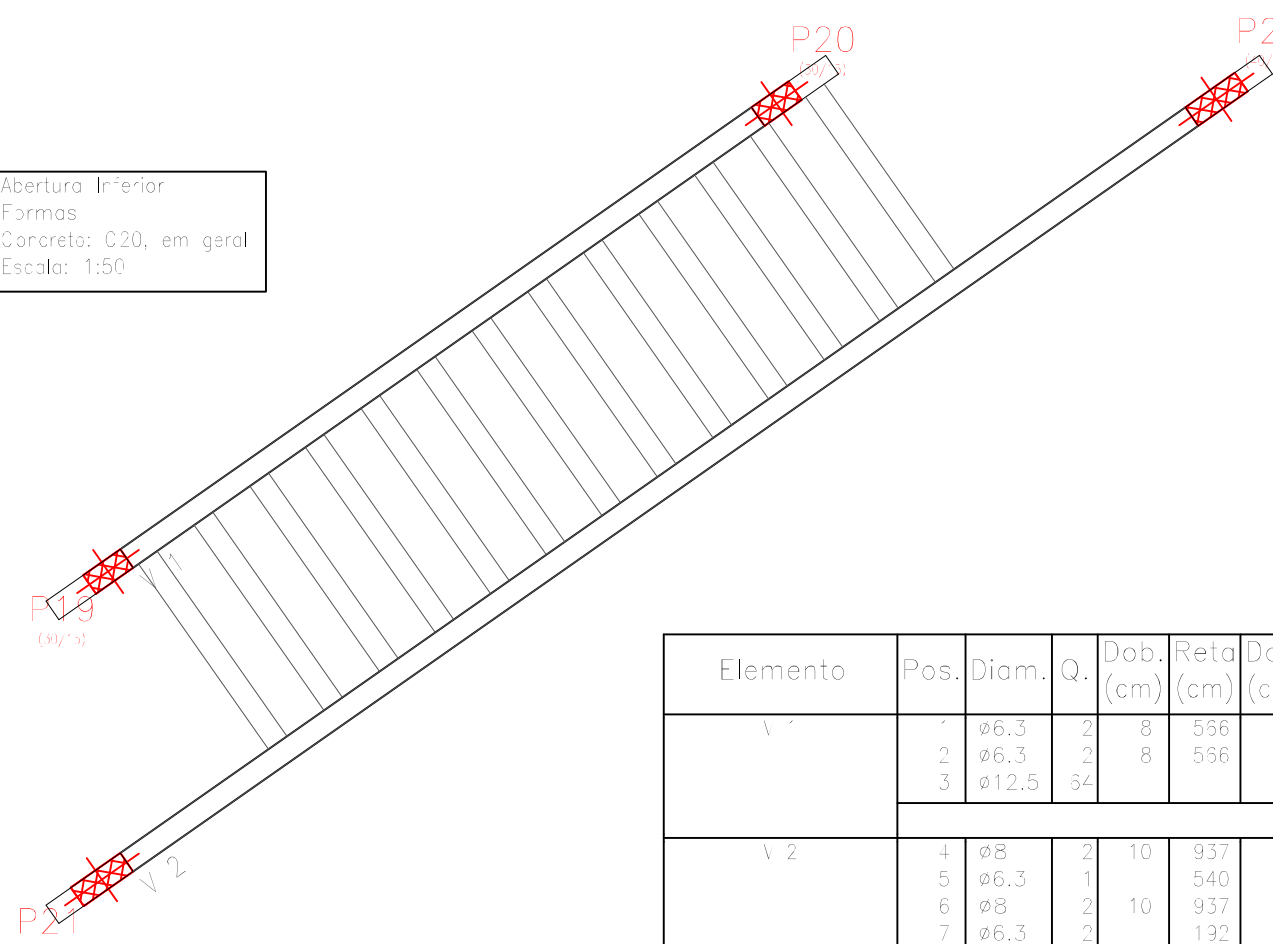
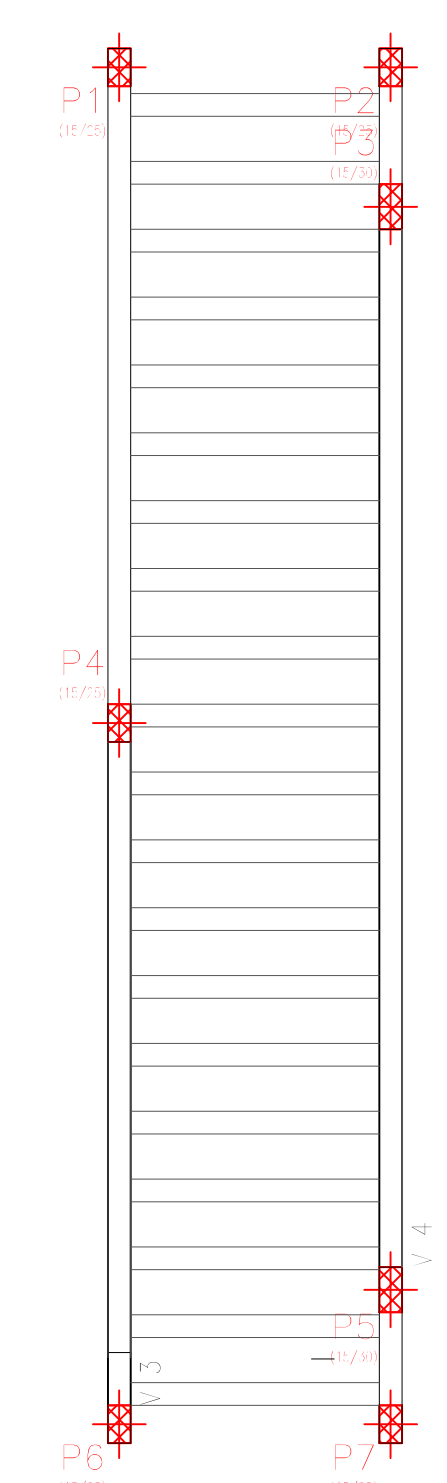
Resumo Aço Cinto dos Muros Pilares	Comp. total (m)	Peso+10% (kg)	Total
CA-50-A ø10	148,8	10,3	10,3
CA-60-B ø5	191,4	3,3	3,3
Total			13,6



Amarração Muros Formas
 Concreto: C20, em geral
 Escala: 1:50



Abertura Inferior Formas
 Concreto: C20, em geral
 Escala: 1:50



Elemento	Pos.	Diam.	Q.	Comp.	Ret.	Comp.	Total	CA-50-A	CA-60-B
(cm)	(cm)	(cm)	(cm)	(cm)	(cm)	(cm)	(kg)	(kg)	(kg)
V 1	1	ø6,3	2	8	556	8	582	1164	2,9
	2	ø6,3	2	8	556	8	582	1164	2,9
	3	ø12,5	94				4800		47,1
Total+10%							58,2		
V 2	4	ø8	2	10	937	0	957	314	1,1
	5	ø6,3	1	10	937	0	957	314	1,1
	6	ø8	2	10	937	0	957	314	1,1
V 3	7	ø6,3	2	8	200	8	208	416	1,0
	8	ø5	87				6090		9,6
	Total+10%							19,0	10,6
V 4	9	ø6,3	2	8	435	8	501	1002	2,5
	10	ø6,3	2	8	435	8	501	1002	2,5
	11	ø5	44				3080		4,8
Total+10%							5,5	5,3	
V 4	12	ø8	2	10	743	0	762	526	6,2
	13	ø8	2	10	743	0	762	526	6,2
	14	ø5	39				4830		7,6
Total+10%							13,2	8,4	

Resumo Aço Abertura Inferior Vigas	Comp. total (m)	Peso+10% (kg)	Total
CA-50-A ø6,3	52,7	14	14
ø8	68,8	30	30
ø12,5	48,0	52	96
CA-60-B ø5	140,0	24	24
Total			120

Amarração Muros - 4 pontos fixos 4,5 m			
Elemento	Quantidade	Compr. (m)	Peso (kg)
Viga Fundo	235	0,48	52
Forço lateral	581		
Muros (4 pontos)	600		
Total	1416	0,48	52
Muros (4 pontos)	2300	0,110	120