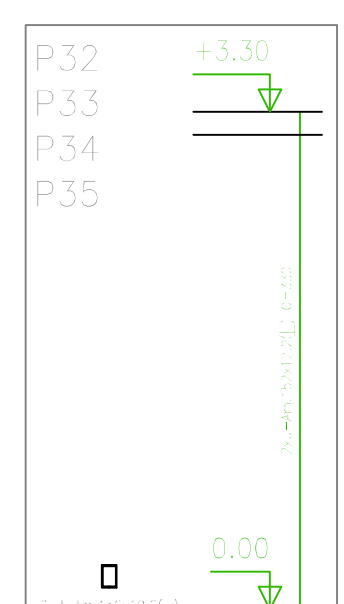
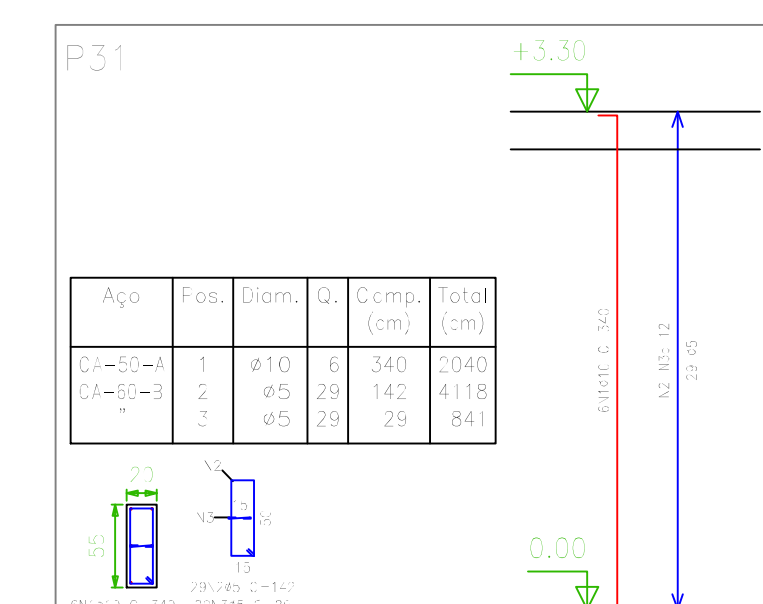
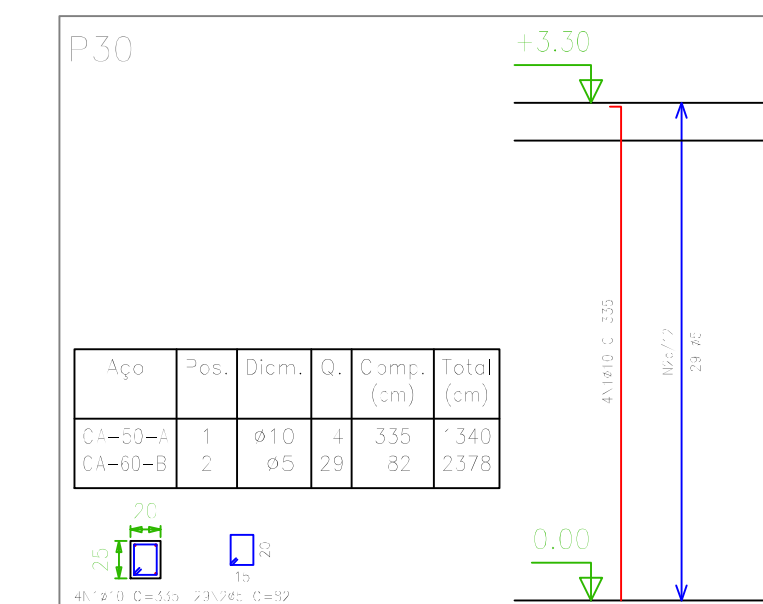
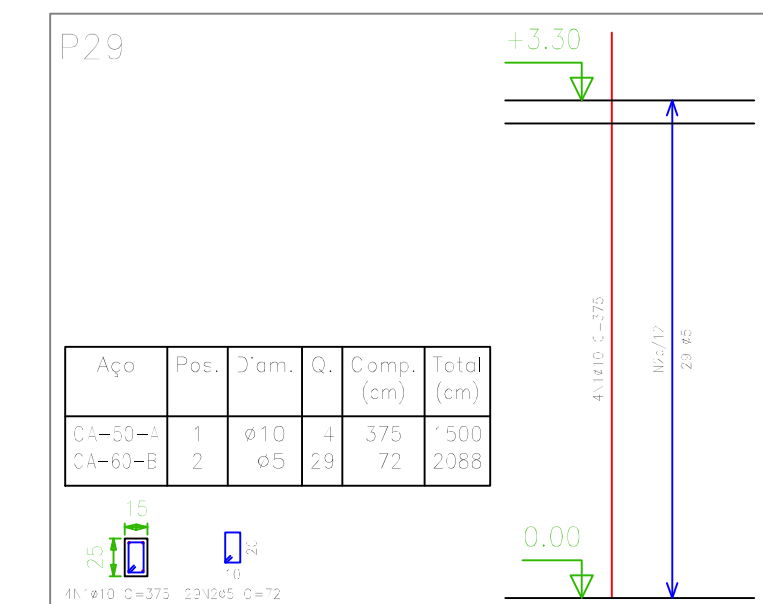
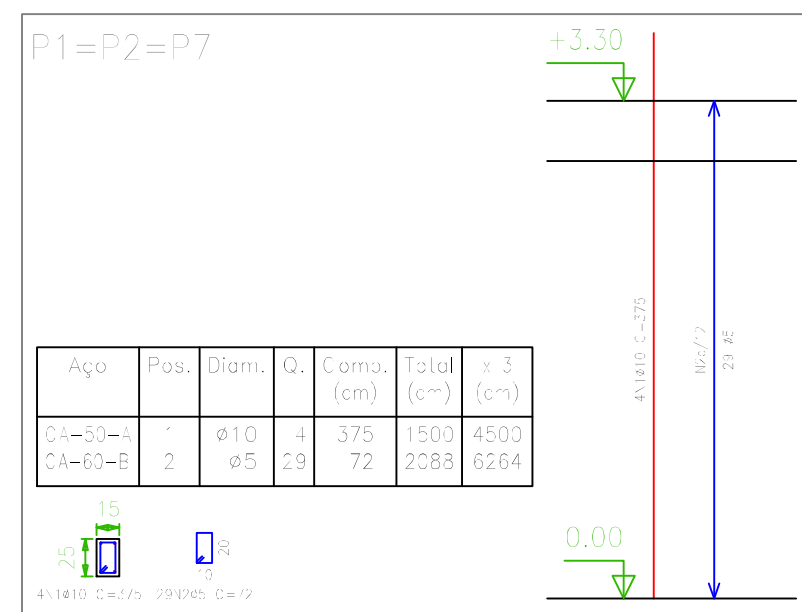


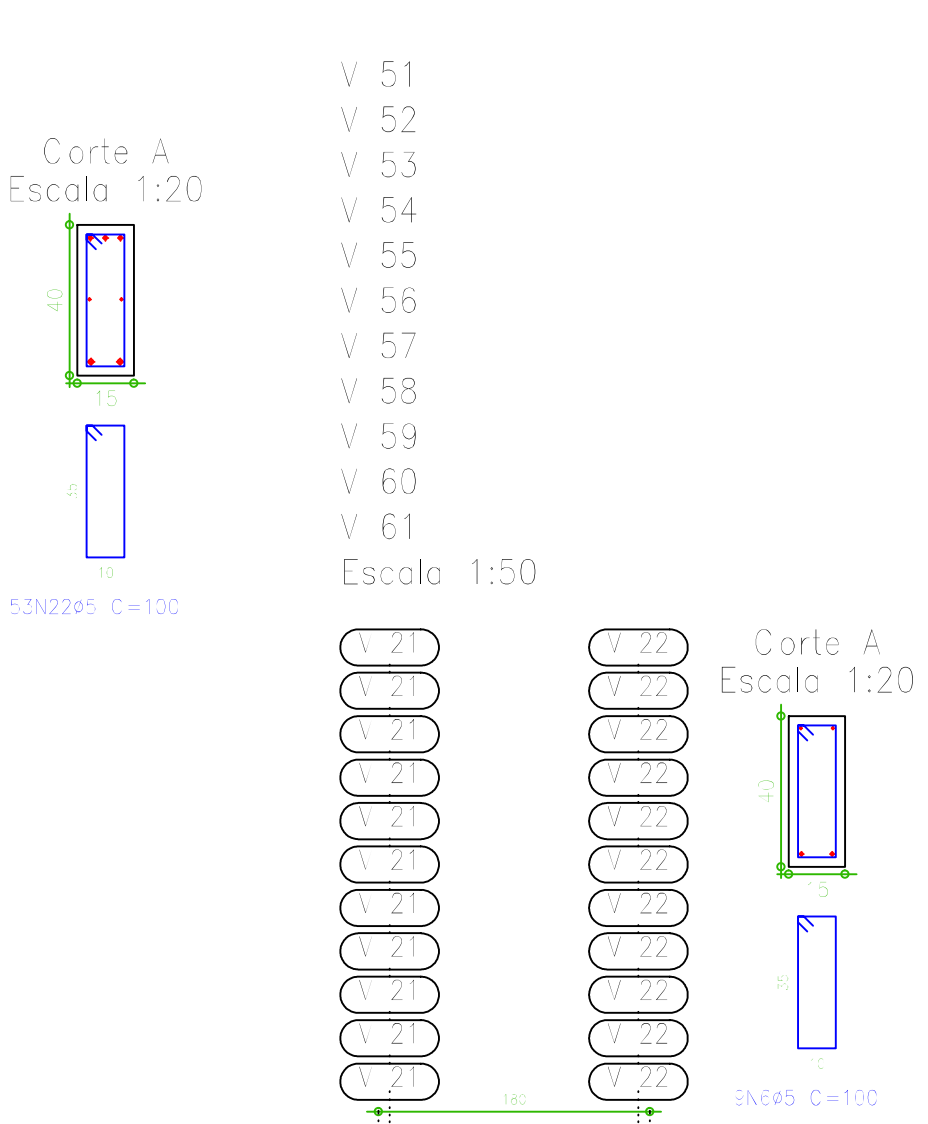
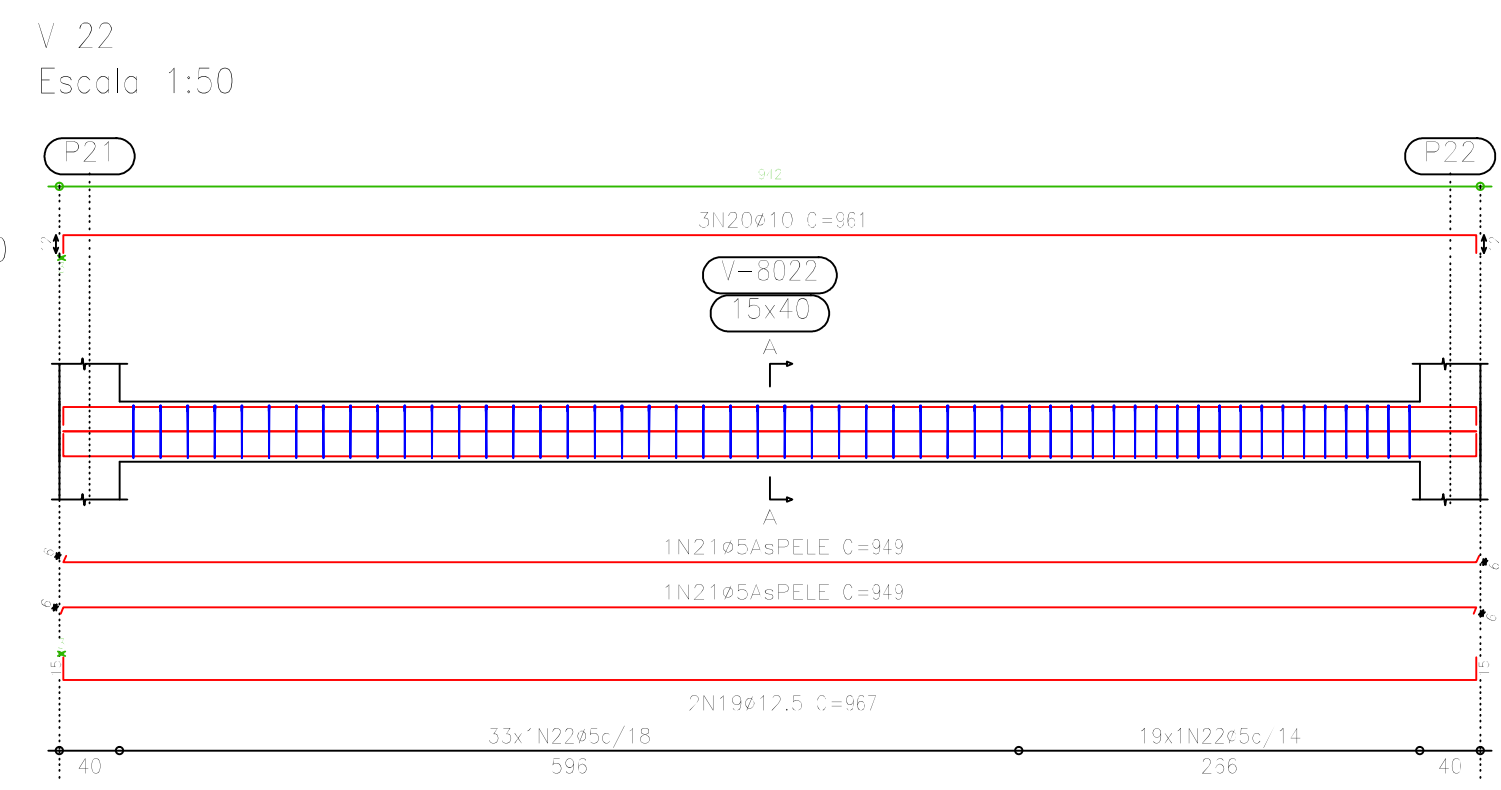
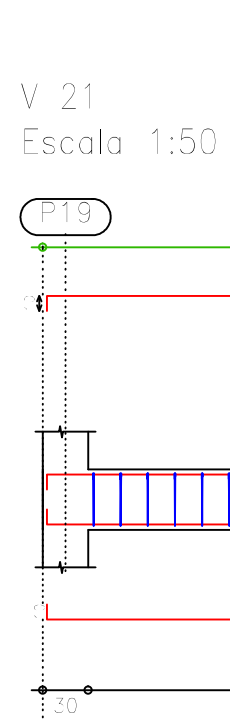
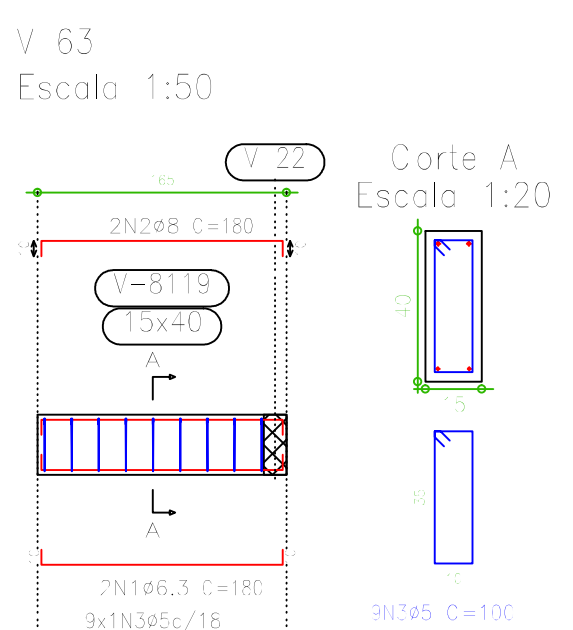
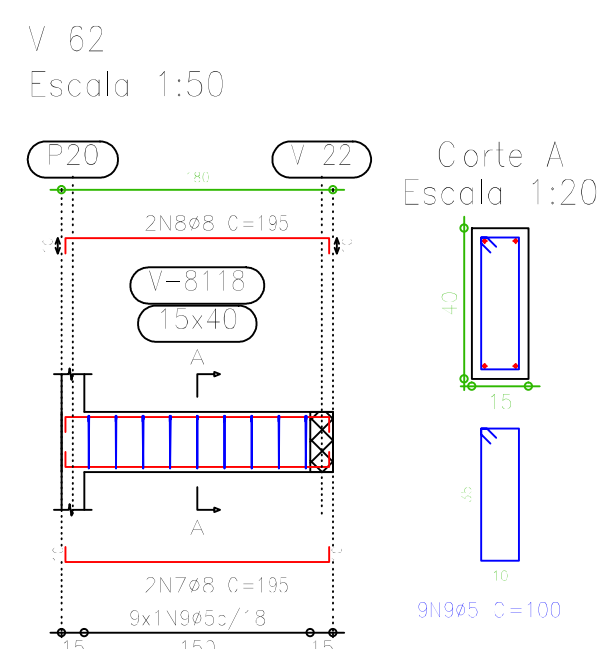
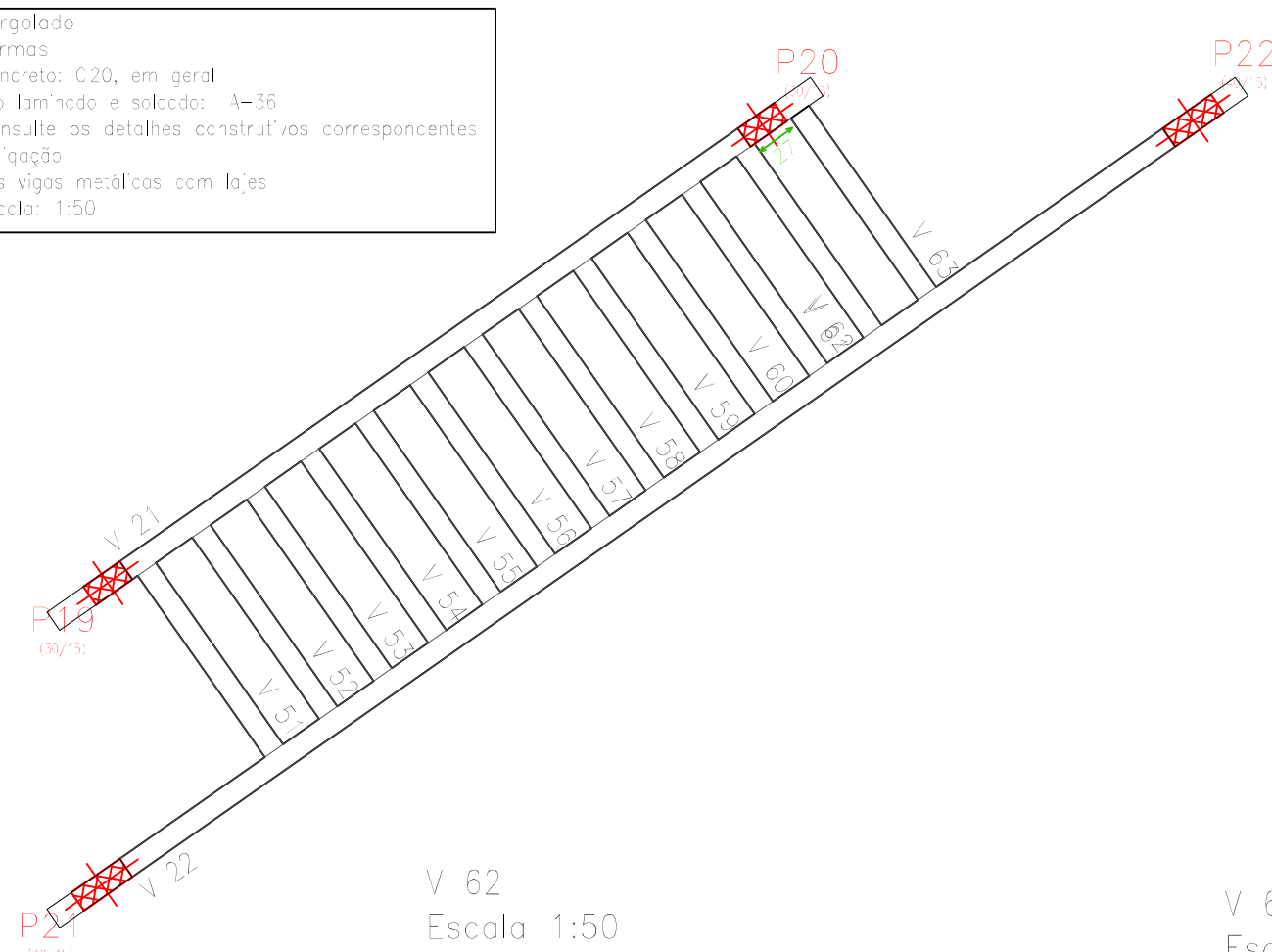
Pilares que terminam em Pergolato
 Concreto: C20, em geral
 Aço: CA-50-A e CA-60-B
 Aço em perfis: A-36
 Escala: 1:50

Pergolato
 Formas
 Concreto: C20, em geral
 Aço laminado e soldado: A-36
 Consulte os detalhes construtivos correspondentes à ligação das vigas metálicas com lajes
 Escala: 1:50



Resumo Aço Pergolato Pilares	Comp. total (m)	Peso+10% (kg)	Total
CA-50-A Ø10	93,8	65	65
CA-60-B Ø5	156,9	27	27
Total			92

Medição de perfis Aço		
Perfil	Comp. (m)	Peso (kg)
2x U-Am.152x12,2(□)	13,20	3,8

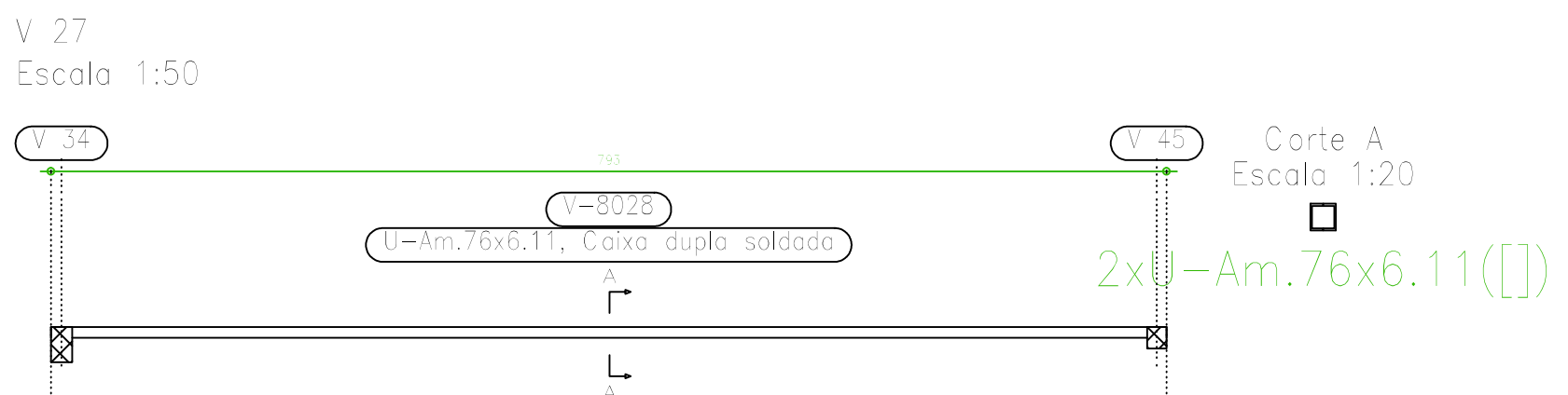
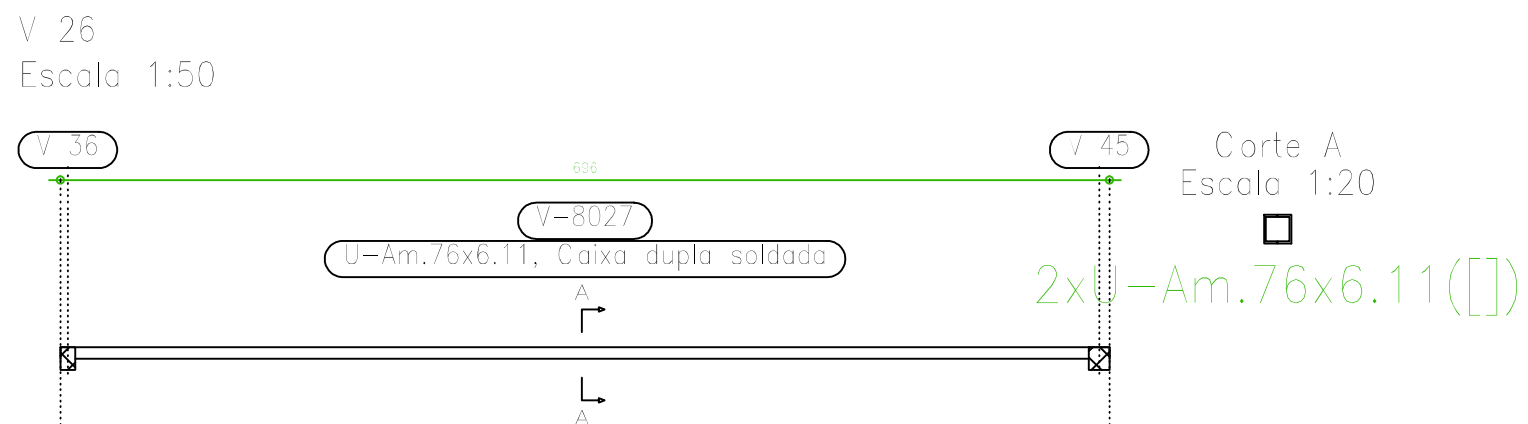
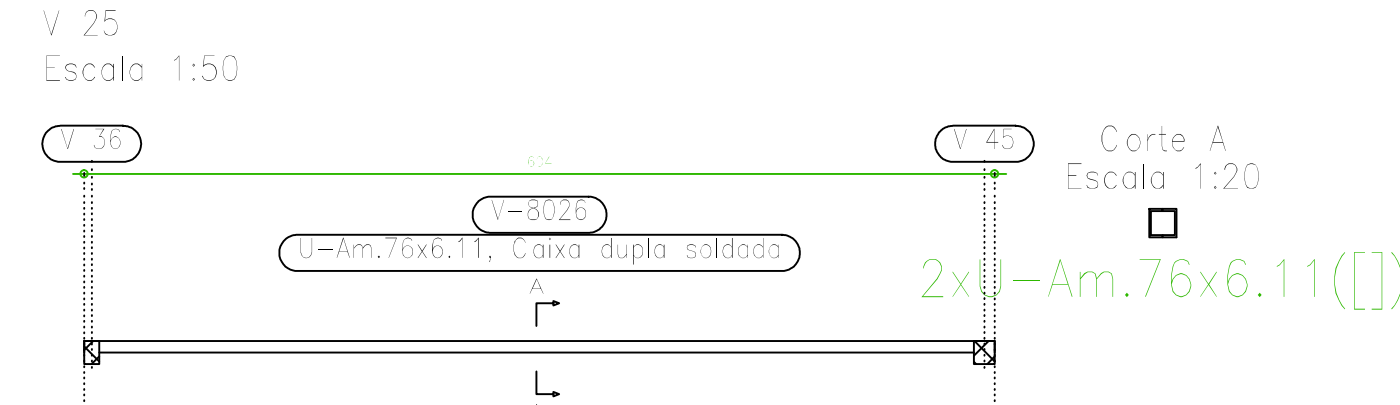
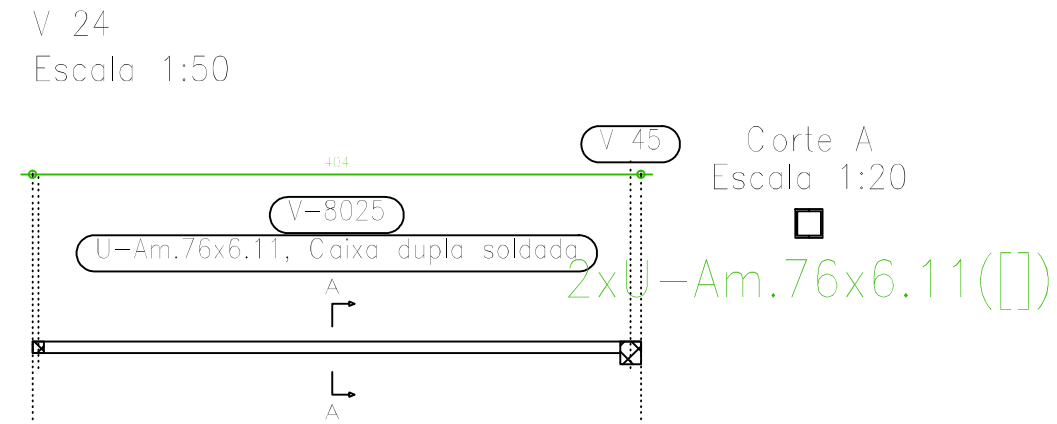
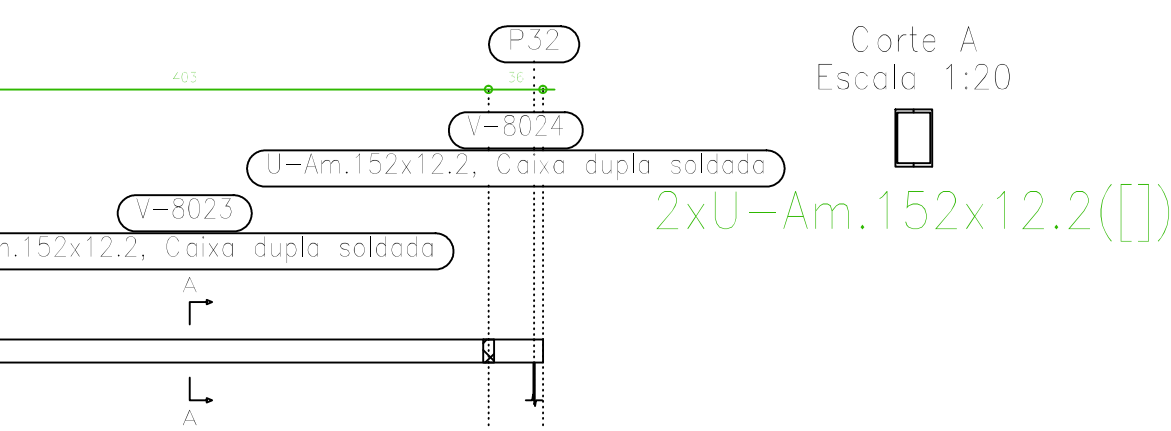
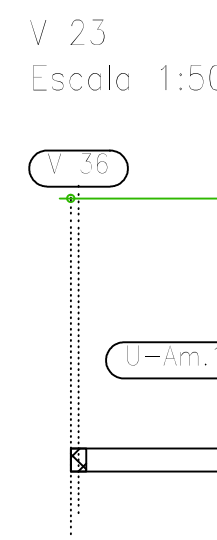
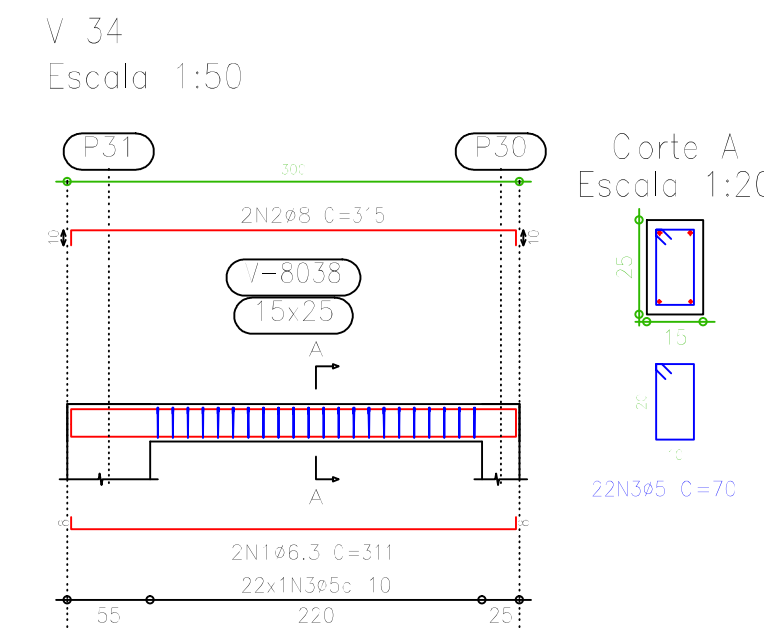
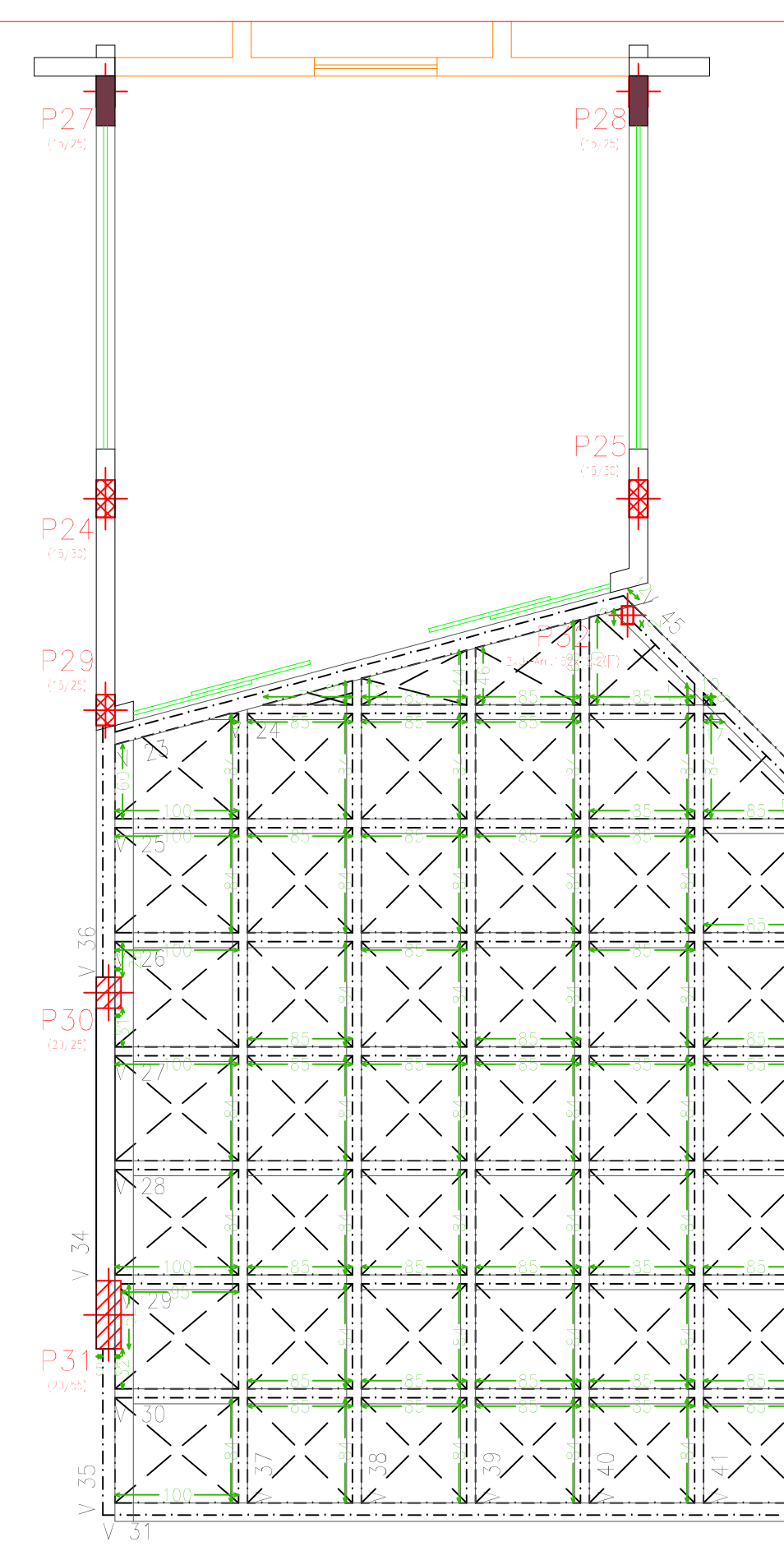


Elemento	Pos.	Diam.	Q.	Doç. (cm)	Reço (cm)	Doç. (cm)	Comp. (cm)	Total (cm)	CA-50-A (kg)	CA-60-B (kg)
V 21	16	Ø8	2	10	566	0	566	1172	4,6	4,6
V 22	10	Ø12,5	3	15	937	0	967	1334	19,2	18,1
V 31=V 52=V 53	4	Ø8	2	10	175	0	195	390	1,5	0,6
V 34=V 55=V 56	5	Ø5	2	6	175	3	187	374	1,4	1,4
V 57=V 58=V 59	6	Ø5	2	6	175	3	187	374	1,4	1,4
V 60=V 61	9	Ø5	2	6	175	3	187	374	1,4	1,4
Total-10%								18,7	40,5	12,3
V 62	7	Ø8	2	10	175	0	195	390	1,5	2,2
V 63	8	Ø8	2	10	175	0	195	390	1,5	2,2
V 64	2	Ø8	2	10	160	0	180	360	1,4	1,4
V 65	3	Ø5	2	6	160	0	180	360	1,4	1,4
Total-10%								3,3	3,3	1,5

Resumo Aço Pergolato Vigas	Comp. total (m)	Peso+10% (kg)	Total
CA-50-A Ø6,3	18,1	5	5
Ø8	243,4	105	105
Ø10	52,2	36	36
Ø12,5	19,3	21	167
CA-60-B Ø5	625,1	108	108
Total			275

Perfis = 2 perfis com 23,20 m					
Perfil	Comp. (m)	Peso (kg)	Comp. (m)	Peso (kg)	Total (kg)
2x U-Am.152x12,2	23,20	6,3	23,20	6,3	12,6
2x U-Am.76x6,11	16,70	0,94	16,70	0,94	3,88
Total	39,90	7,24	39,90	7,24	14,48

Elemento	Pos.	Diam.	Q.	Doç. (cm)	Reço (cm)	Doç. (cm)	Comp. (cm)	Total (cm)	CA-50-A (kg)	CA-60-B (kg)
V 34	1	Ø6,3	2	8	295	8	311	622	1,5	2,4
	2	Ø8	2	10	295	16	315	633	2,5	2,5
	3	Ø5	2	6	295	16	311	622	1,5	1,5
Total-10%								4,4	2,6	2,6



Pergolato
 Formas
 Concreto: C20, em geral
 Aço laminado e soldado: A-36
 Consulte os detalhes construtivos correspondentes à ligação das vigas metálicas com lajes
 Escala: 1:50