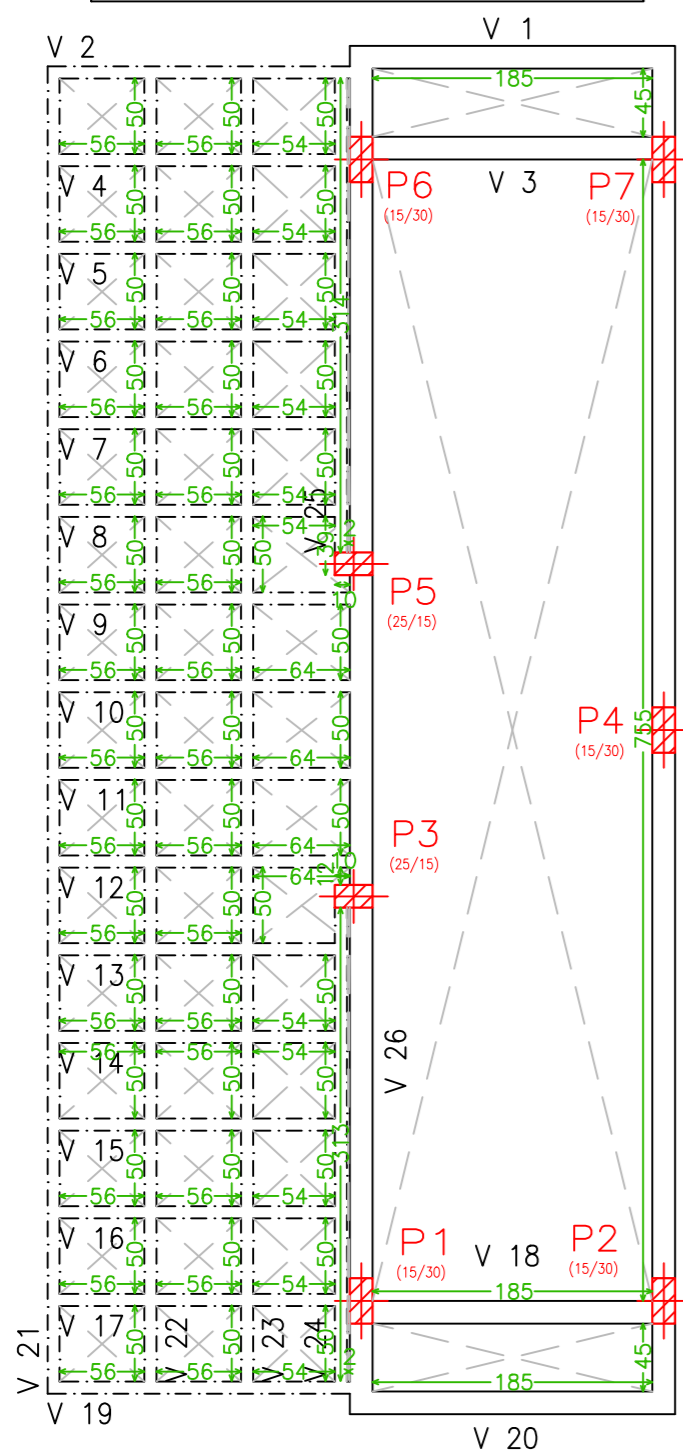
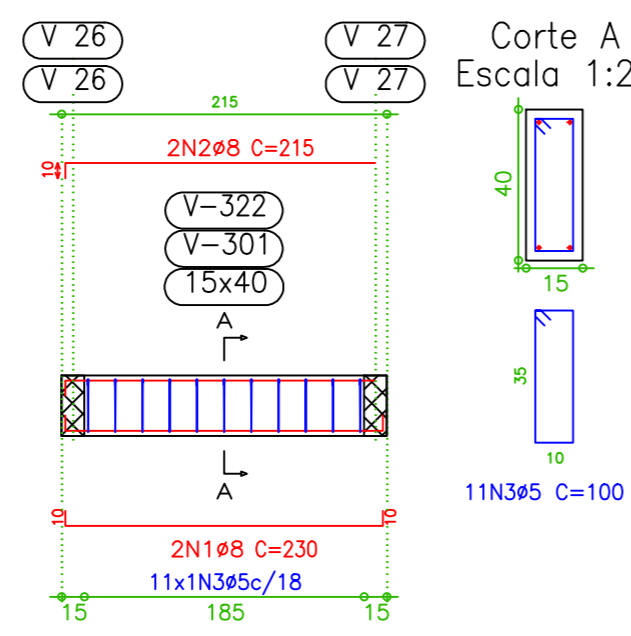


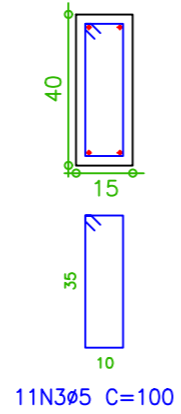
Cobertura  
Formas  
Concreto: C20, em geral  
Aço dobrado: CF-26  
Consulte os detalhes construtivos correspondentes à ligação  
das vigas metálicas com lajes  
Escala: 1:50



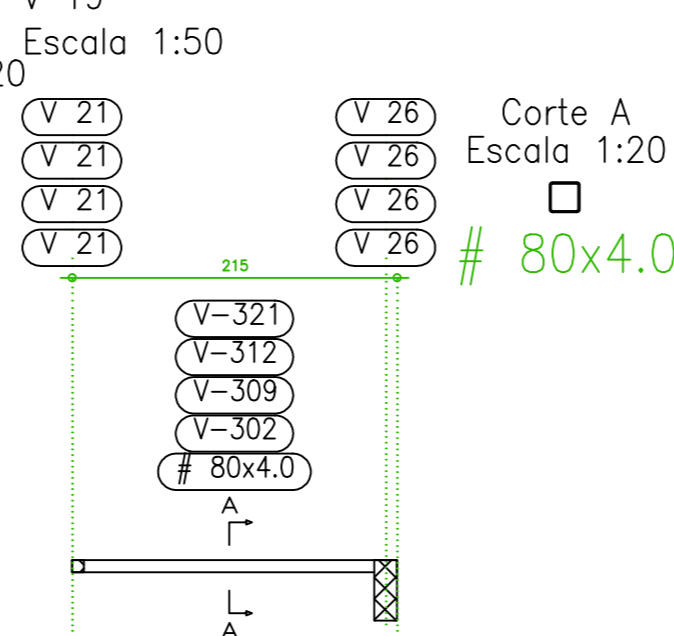
V 1  
V 20  
Escala 1:50



Corte A  
Escala 1:20



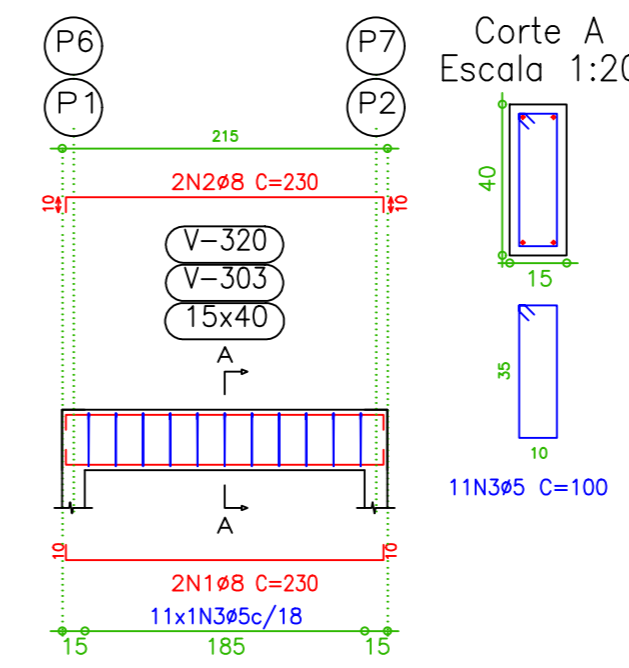
V 2  
V 9  
V 12  
V 19



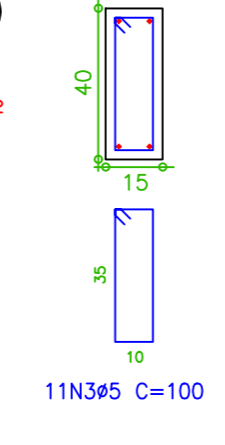
Corte A  
Escala 1:20



V 3  
V 18  
Escala 1:50

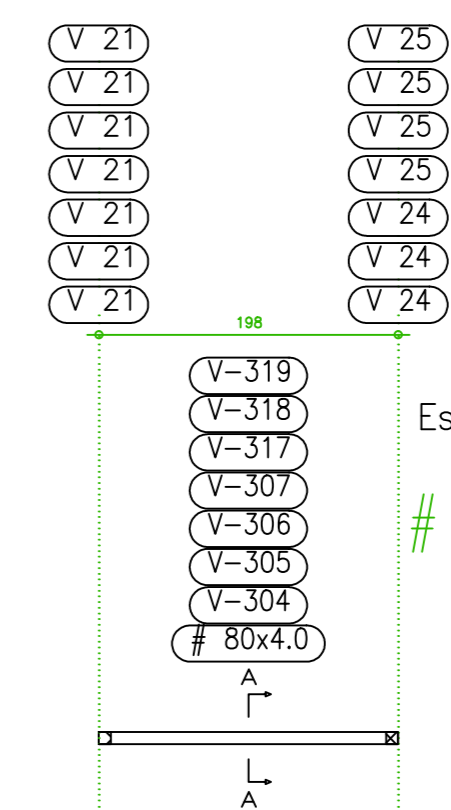


Corte A  
Escala 1:20

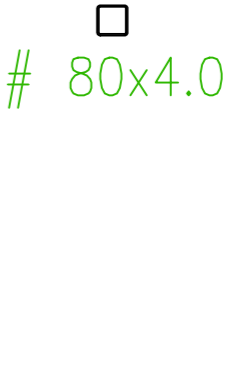


V 4  
V 5  
V 6  
V 7  
V 15  
V 16  
V 17  
Escala 1:50

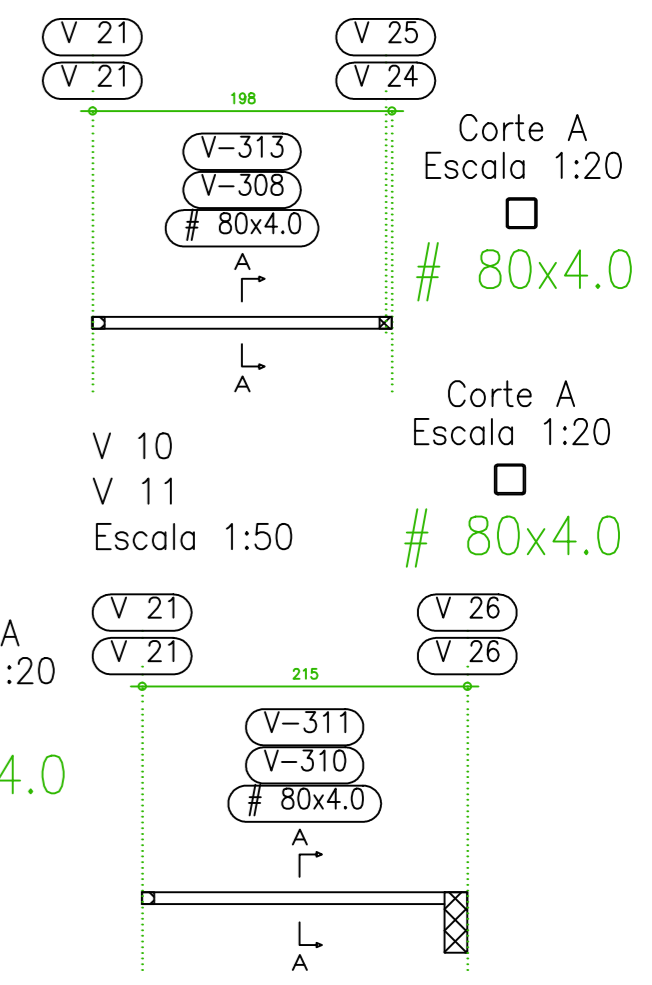
Cobertura  
Desenho de vigas  
Concreto: C20, em geral  
Aço dobrado: CF-26  
Aço: CA-50-A e CA-60-B  
Escala vigas: 1:50  
Escala seções: 1:20



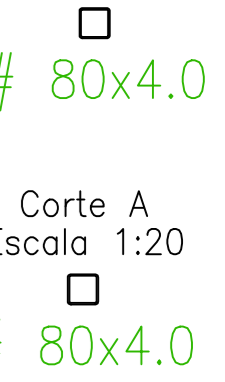
Corte A  
Escala 1:20



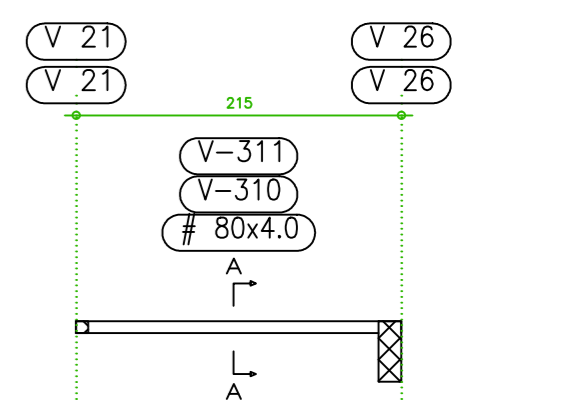
V 8  
V 13  
Escala 1:50



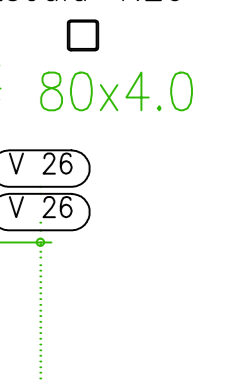
Corte A  
Escala 1:20



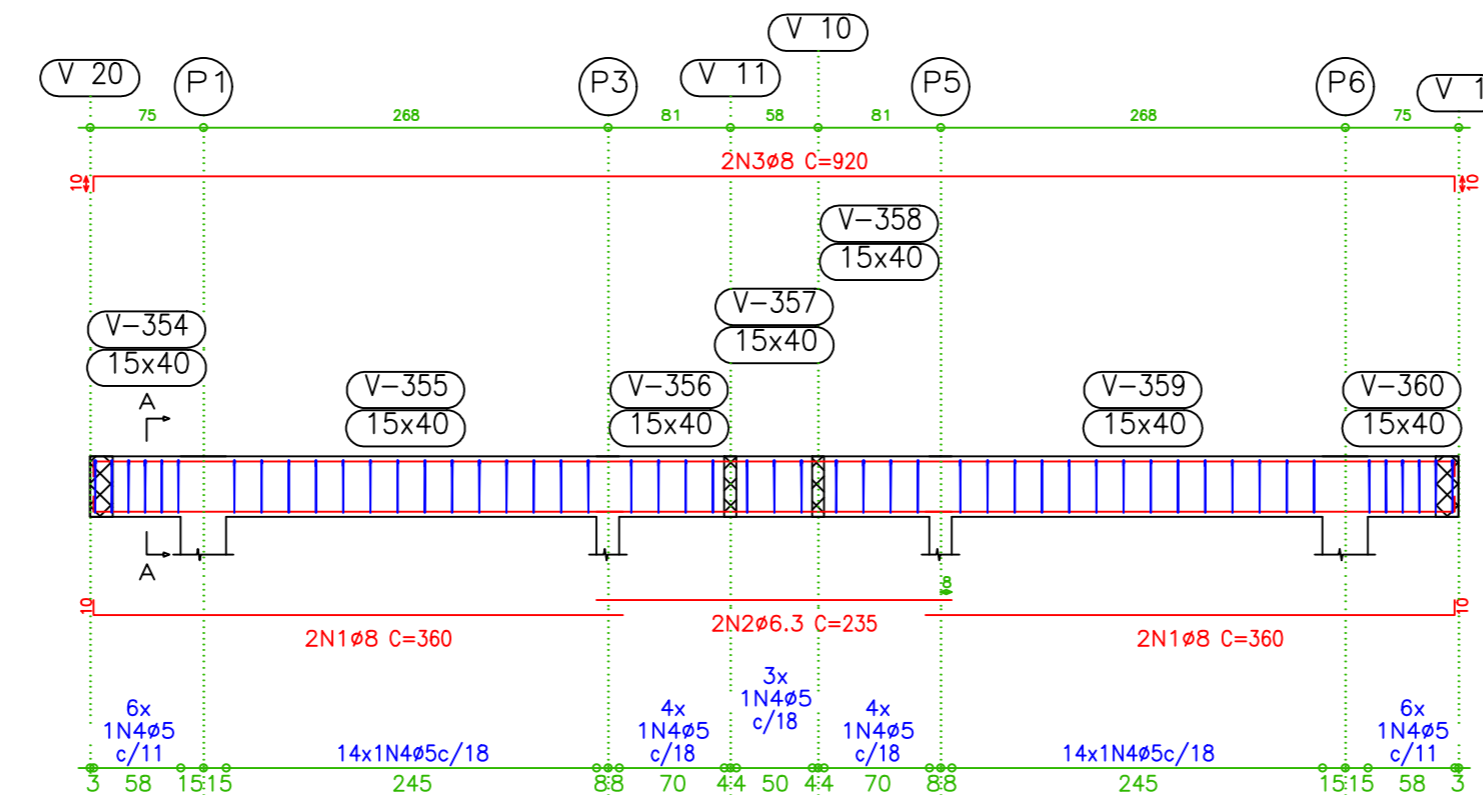
V 10  
V 11  
Escala 1:50



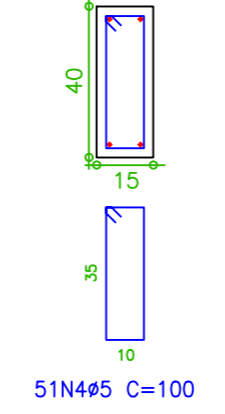
Corte A  
Escala 1:20



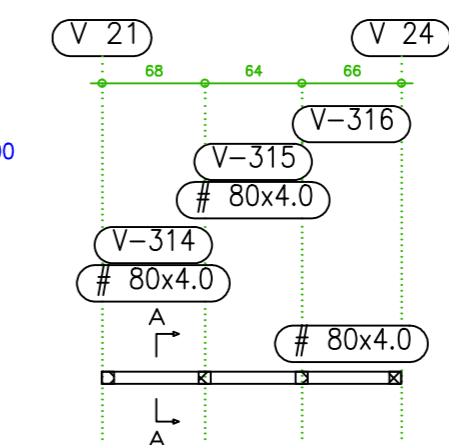
V 26  
Escala 1:50



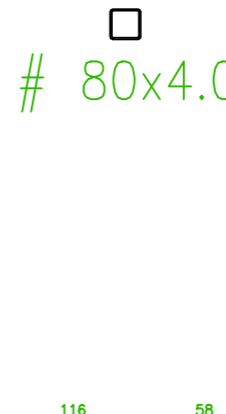
Corte A  
Escala 1:20



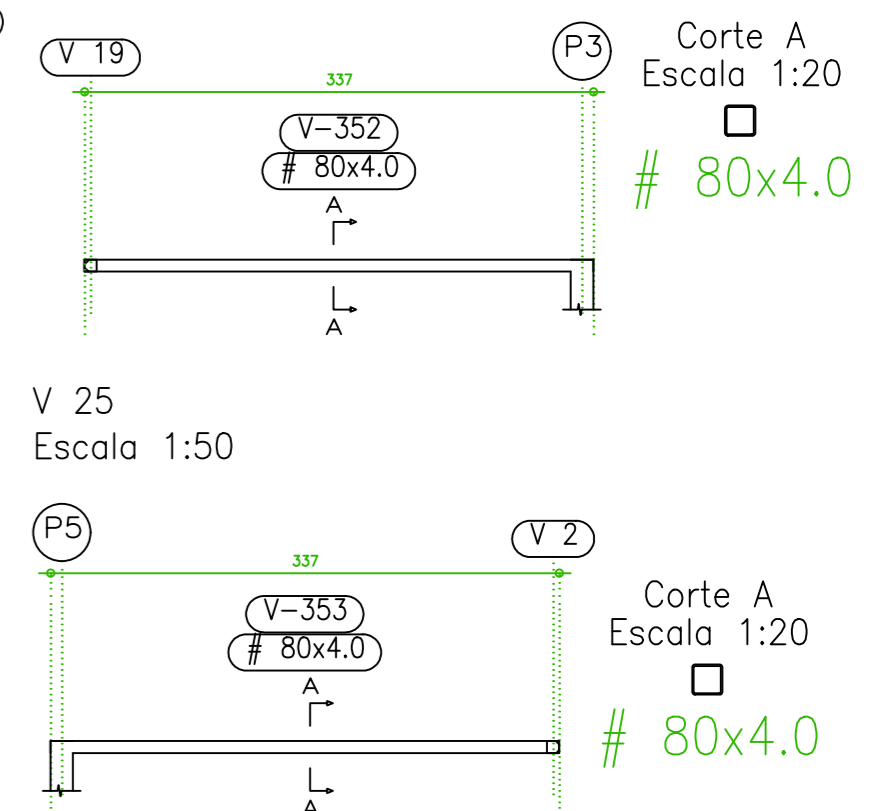
V 14  
Escala 1:50



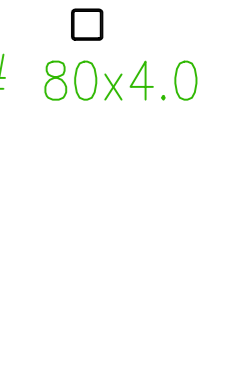
Corte A  
Escala 1:20



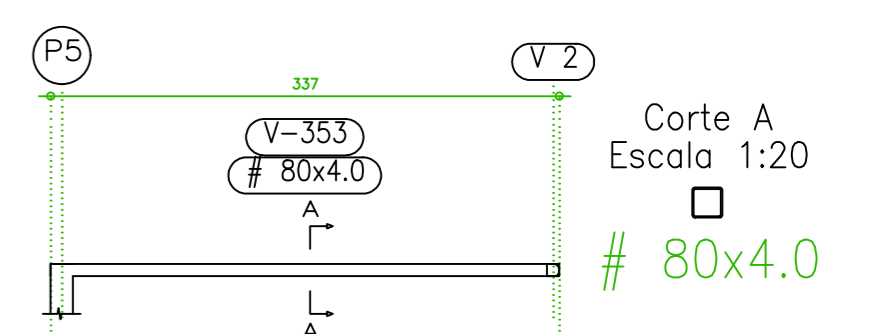
V 24  
Escala 1:50



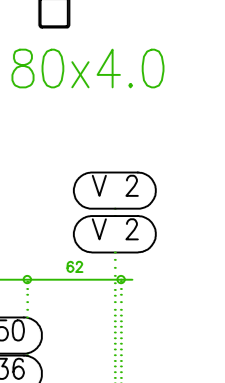
Corte A  
Escala 1:20



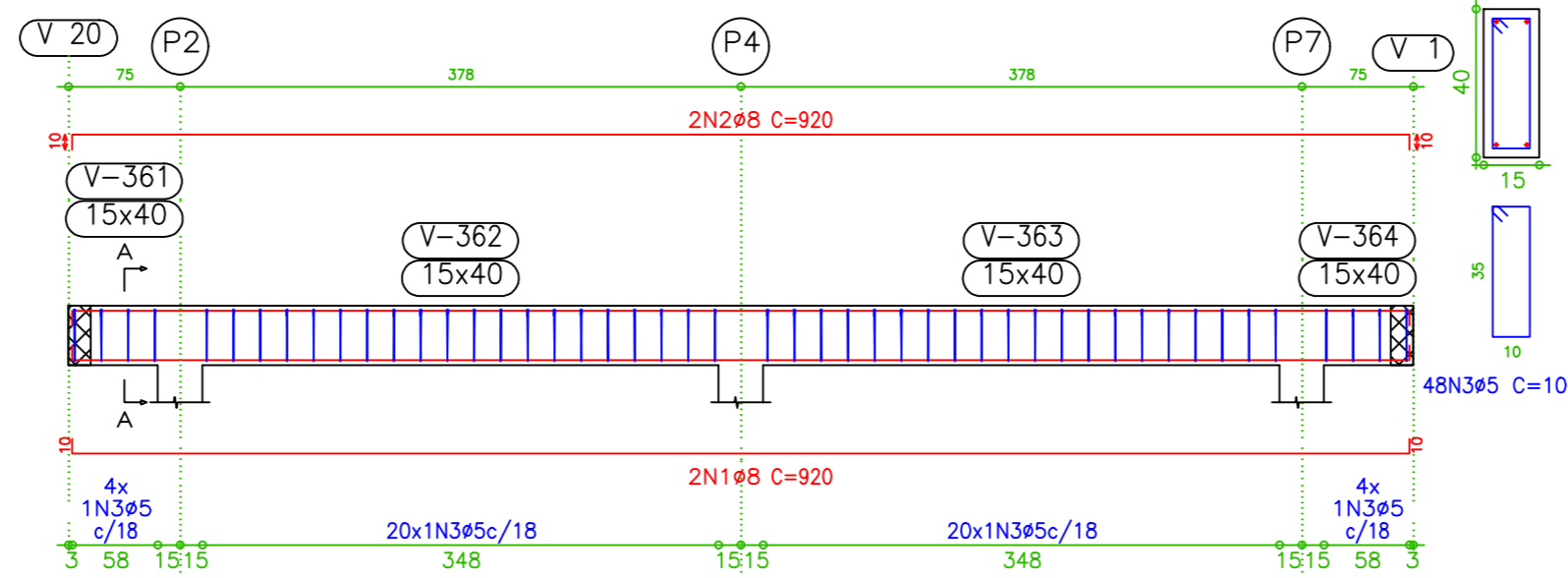
V 25  
Escala 1:50



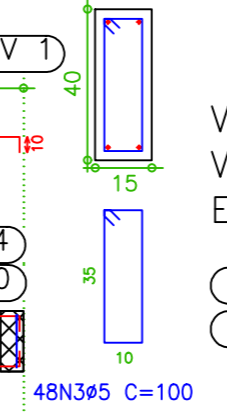
Corte A  
Escala 1:20



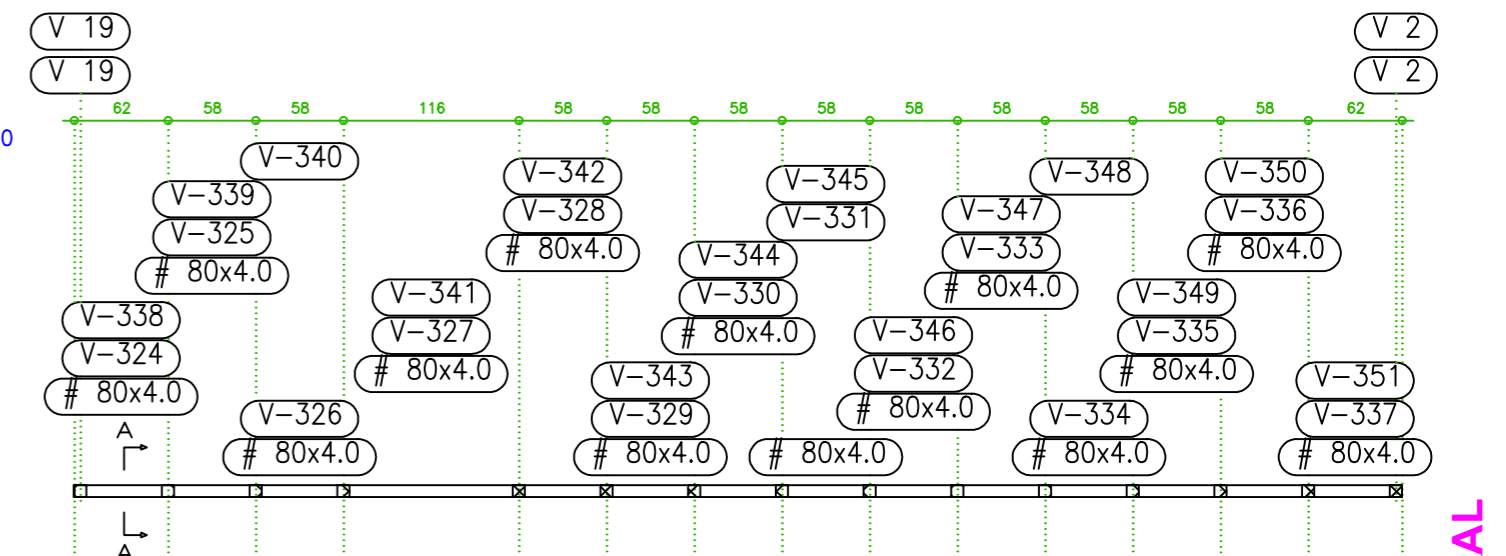
V 27  
Escala 1:50



Corte A  
Escala 1:20



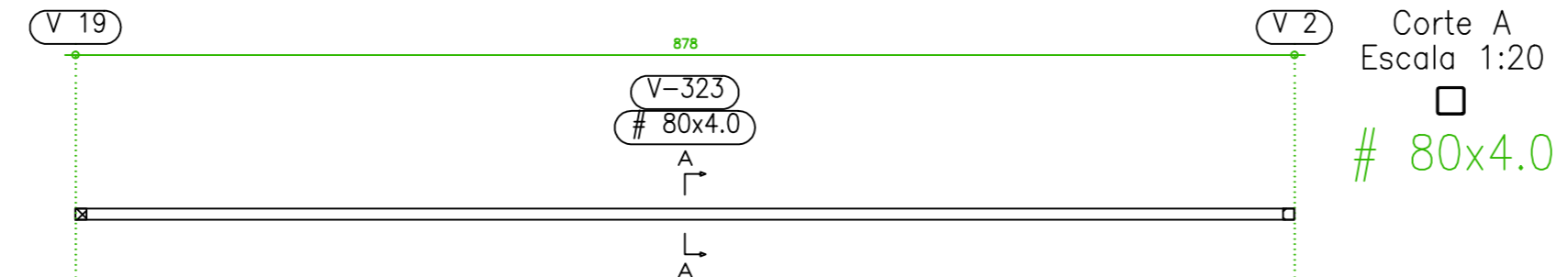
V 22  
V 23  
Escala 1:50



Corte A  
Escala 1:20



V 21  
Escala 1:50



Corte A  
Escala 1:20



Elemento	Pos.	Diam.	Q.	Dob. (cm)	Ret. (cm)	Dob. (cm)	Comp. (cm)	Total (cm)	CA-50-A (kg)	CA-60-B (kg)
V 1=V 20	1	Ø8	2	10	210	10	230	460	1.8	
	2	Ø8	2	10	205		215	430	1.7	
	3	Ø5	11				100	1100		1.7
Total+10%:									3.9	1.9
									7.8	3.8
V 3=V 18	1	Ø8	2	10	210	10	230	460	1.8	
	2	Ø8	2	10	210	10	230	460	1.8	
	3	Ø5	11				100	1100		1.7
Total+10%:									4.0	1.9
									8.0	3.8
V 26	1	Ø8	4	10	350		360	1440	5.7	
	2	Ø6.3	2	10	235		235	470	1.2	
	3	Ø8	2	10	900	10	920	1840	7.2	
	4	Ø5	51				100	5100		8.0
Total+10%:									15.5	8.8
V 27	1	Ø8	2	10	900	10	920	1840	7.2	
	2	Ø8	2	10	900	10	920	1840	7.2	
	3	Ø5	48				100	4800		7.5
Total+10%:									15.8	8.3

Resumo Aço Cobertura Vigas	Comp. total (m)	Peso+10% (kg)	Total
CA-50-A Ø6.3	4.7	1	47
Ø8	105.8	46	47
CA-60-B Ø5	143.0	25	25
Total			72

Cobertura - Superfície total: 8.64 m2				
Elemento	Formas (m2)	Volume (m3)	Barras (kg)	Dobrado (kg)
Vigas: fundo	8.34	1.55	72	588
Forma lateral	18.77			
Pilares (Sup. Formas)	13.00	0.65	88	
Total	40.11	2.20	160	588
Índices (por m2)	4.642	0.255	18.52	68.06