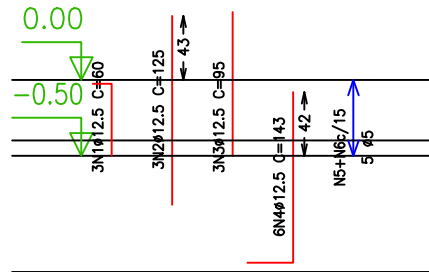
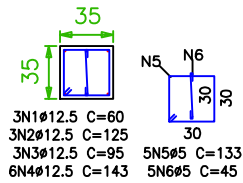


Pilares que terminam em
Baldrame
Concreto: C30, em geral
Aço: CA-50-A e CA-60-B
Escala: 1:50

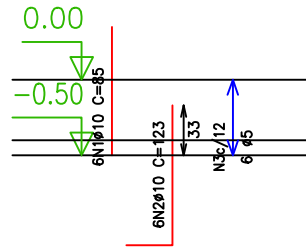
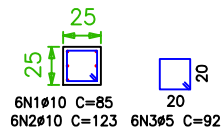
P8

Aço	Pos.	Diam.	Q.	Comp. (cm)	Total (cm)
CA-50-A	1	Ø12.5	3	60	180
"	2	Ø12.5	3	125	375
"	3	Ø12.5	3	95	285
"	4	Ø12.5	6	143	858
CA-60-B	5	Ø5	5	133	665
"	6	Ø5	5	45	225



P10

Aço	Pos.	Diam.	Q.	Comp. (cm)	Total (cm)
CA-50-A	1	Ø10	6	85	510
"	2	Ø10	6	123	738
CA-60-B	3	Ø5	6	92	552



Resumo Aço Baldrame Pilares	Comp. total (m)	Peso+10% (kg)	Total
CA-50-A Ø10	12.5	9	
Ø12.5	17.0	18	27
CA-60-B Ø5	14.4	2	2
Total			29

prancha

3/15

ESTRUTURAL

projeto