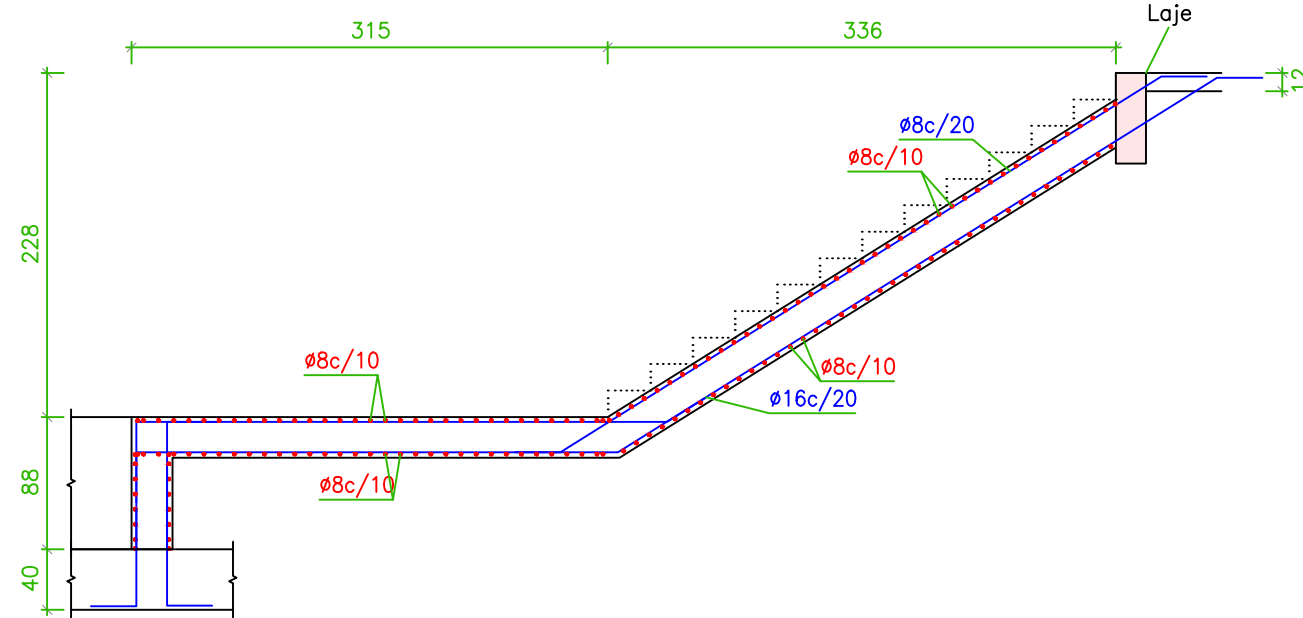
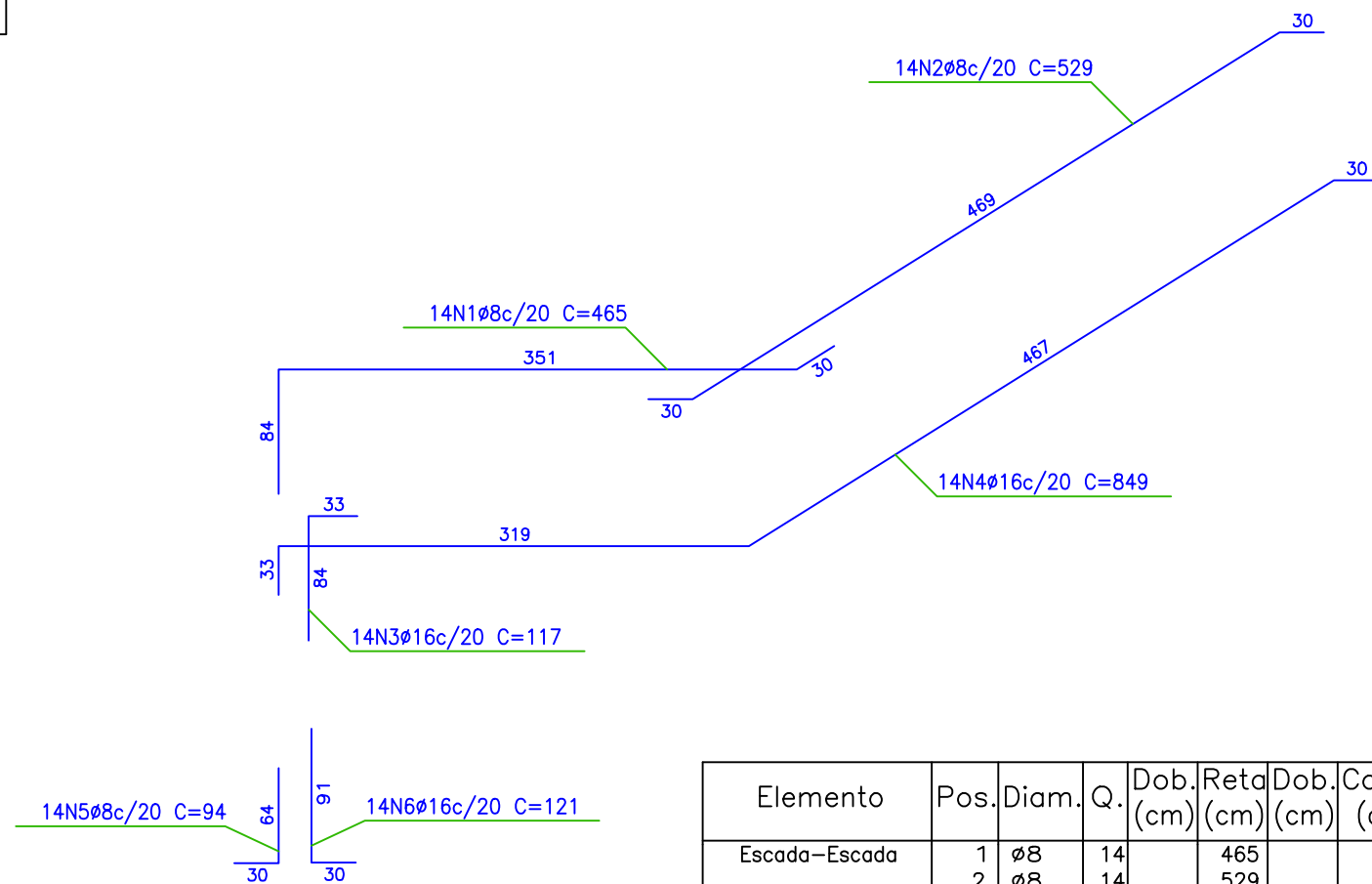
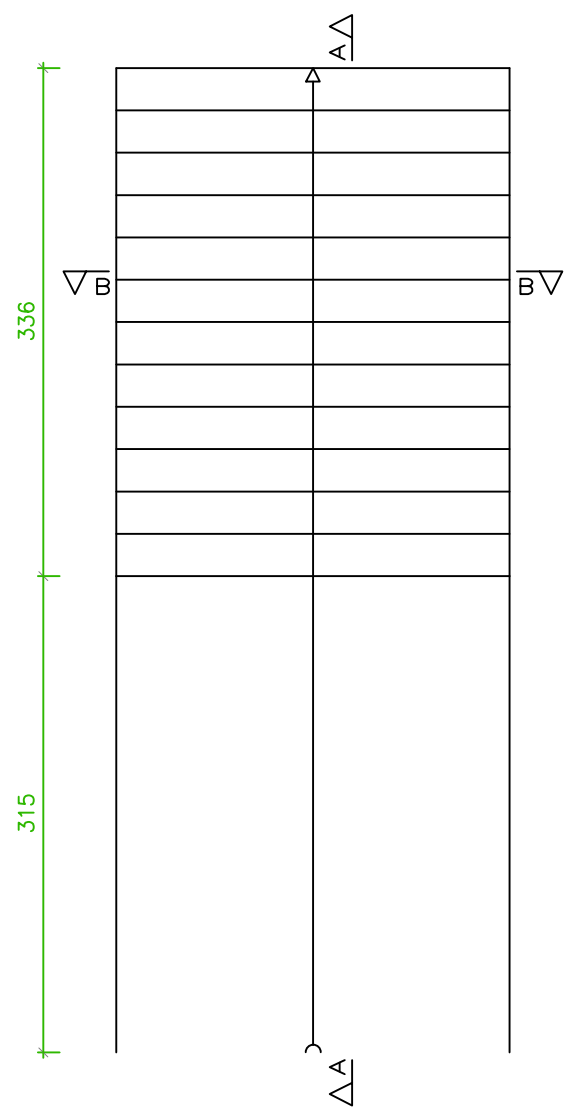
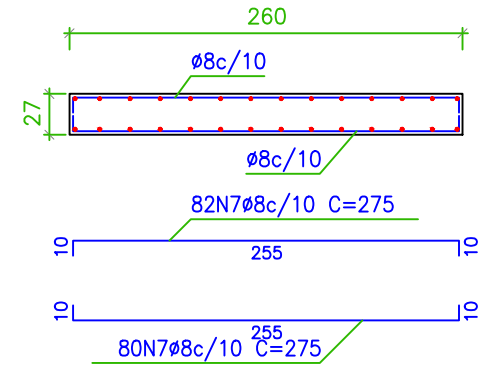


Escada		
Geometria	Largura	2.600 m
	Espessura	0.27 m
	Piso	0.280 m
	Espelho	0.175 m
	Desnível que vence	3.15 m
	Nº de degraus	13
Cargas	Piso final	Pavimento Superior
	Piso inicial	Baldrame
	Peso próprio	6.62 kN/m ²
	Degraus (Realizado com tijolos)	1.16 kN/m ²
	Revestimento	1.00 kN/m ²
Materiais	Guarda-corpos	3.00 kN/m
	Sobrecarga	3.00 kN/m ²
	Concreto	C30, em geral
	Aço	CA-50-A e CA-60-B
	Cob. geométrico	2.0 cm

Seção A-A



Seção B-B



Resumo Aço Escada	Comp. total (m)	Peso+10% (kg)	Total
CA-50-A Ø8	597.8	258	
Ø16	152.2	263	521

Elemento	Pos.	Diam.	Q.	Dob. (cm)	Ret. (cm)	Dob. (cm)	Comp. (cm)	Total (cm)	CA-50-A (kg)	CA-60-B (kg)	
Escada-Escada	1	Ø8	14		465		465	6510	25.6		
	2	Ø8	14		529		529	7406	29.1		
	3	Ø16	14		117		117	1638	25.7		
	4	Ø16	14		849		849	11886	186.6		
	5	Ø8	14		94		94	1316	5.2		
	6	Ø16	14		121		121	1694	26.6		
	7	Ø8	162		275		275	44550	174.9		
Total+10%:									521.1		
									Ø8:	258.3	0.0
									Ø16:	262.8	0.0
									Total:	521.1	0.0

prancha

15/15