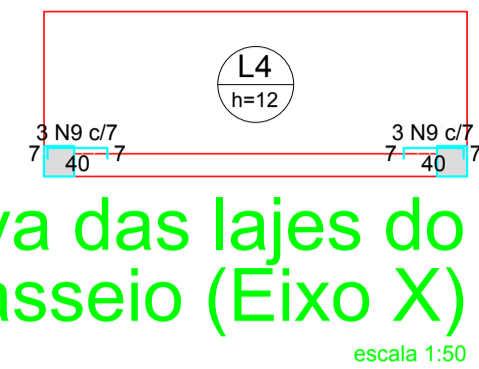
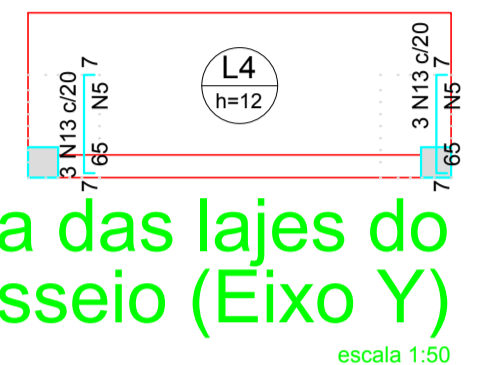


Armação negativa das lajes do pavimento passeio (Eixo X)



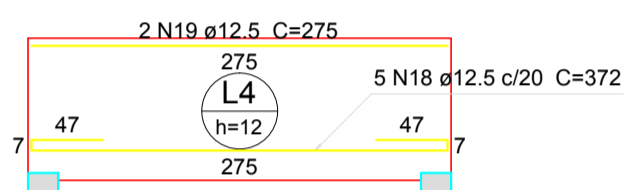
escala 1:50

Armação negativa das lajes do pavimento passeio (Eixo Y)



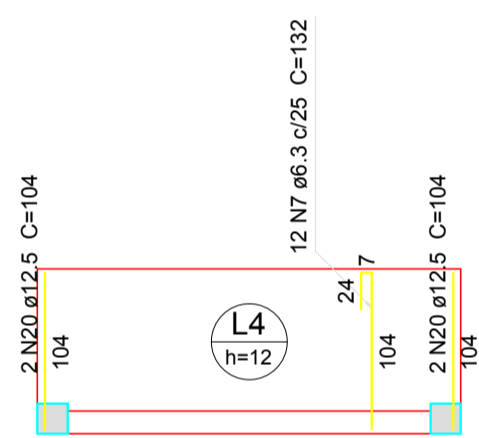
escala 1:50

Armação positiva das lajes do pavimento passeio (Eixo X)

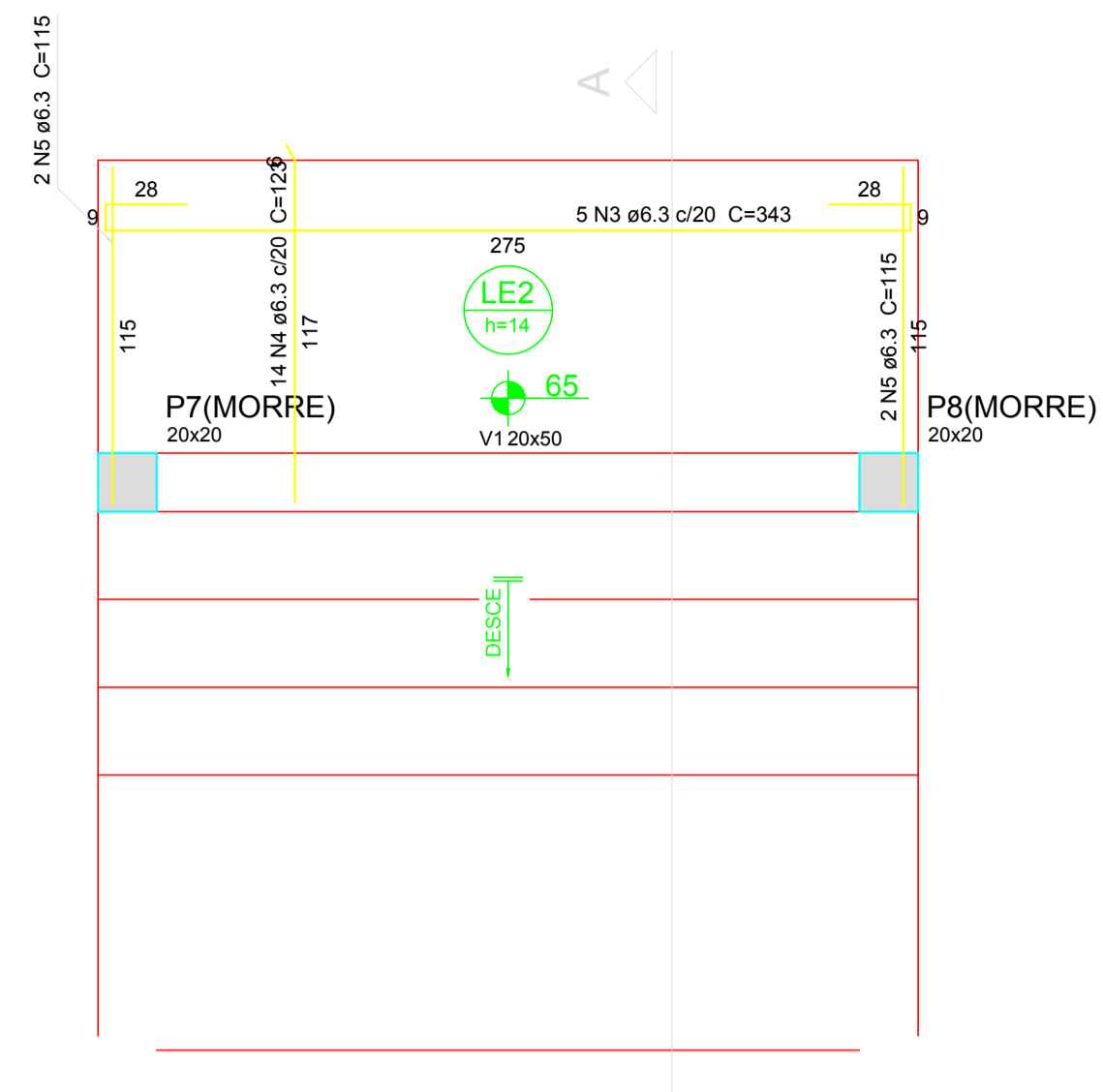


escala 1:50

Armação positiva das lajes do pavimento passeio (Eixo Y)

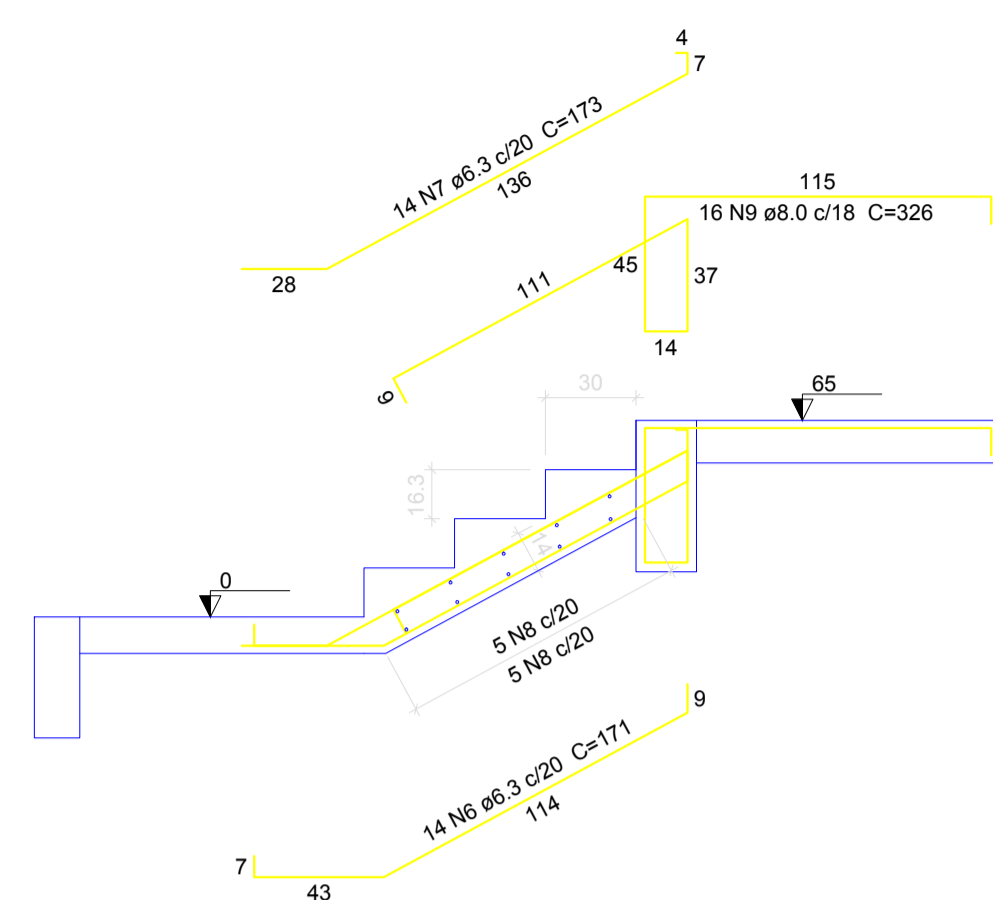


escala 1:50



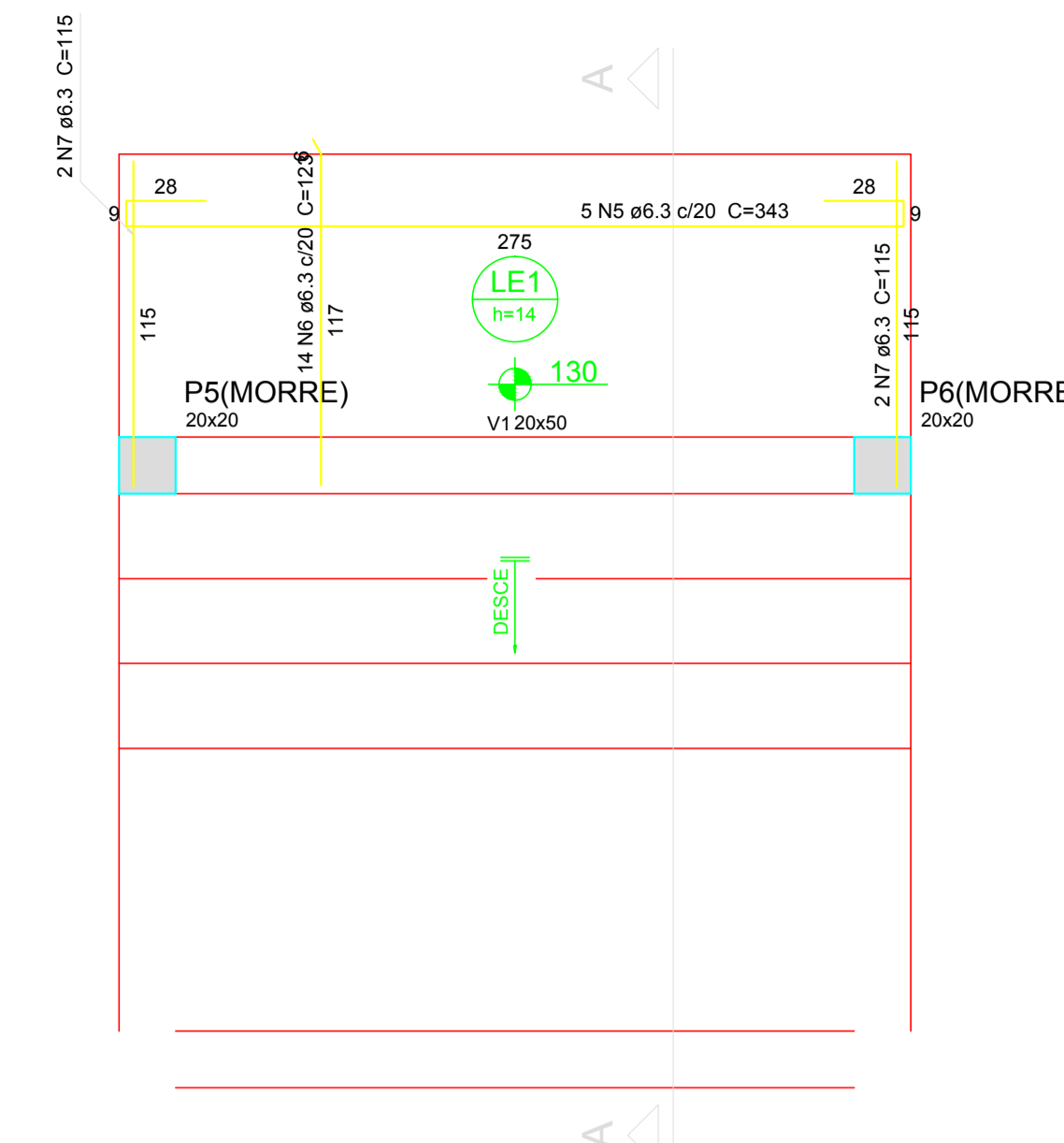
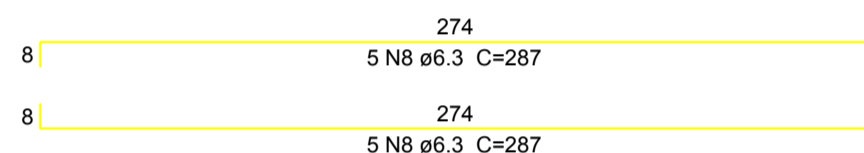
Armação positiva da escada E1

escala 1:25



Corte A-A (LE1)

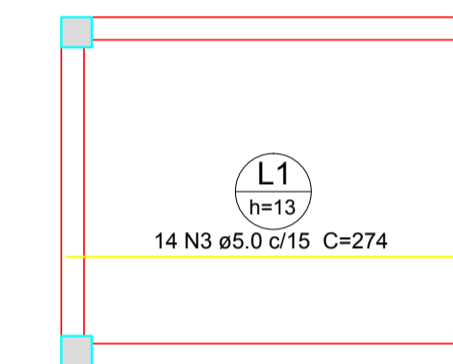
escala 1:25



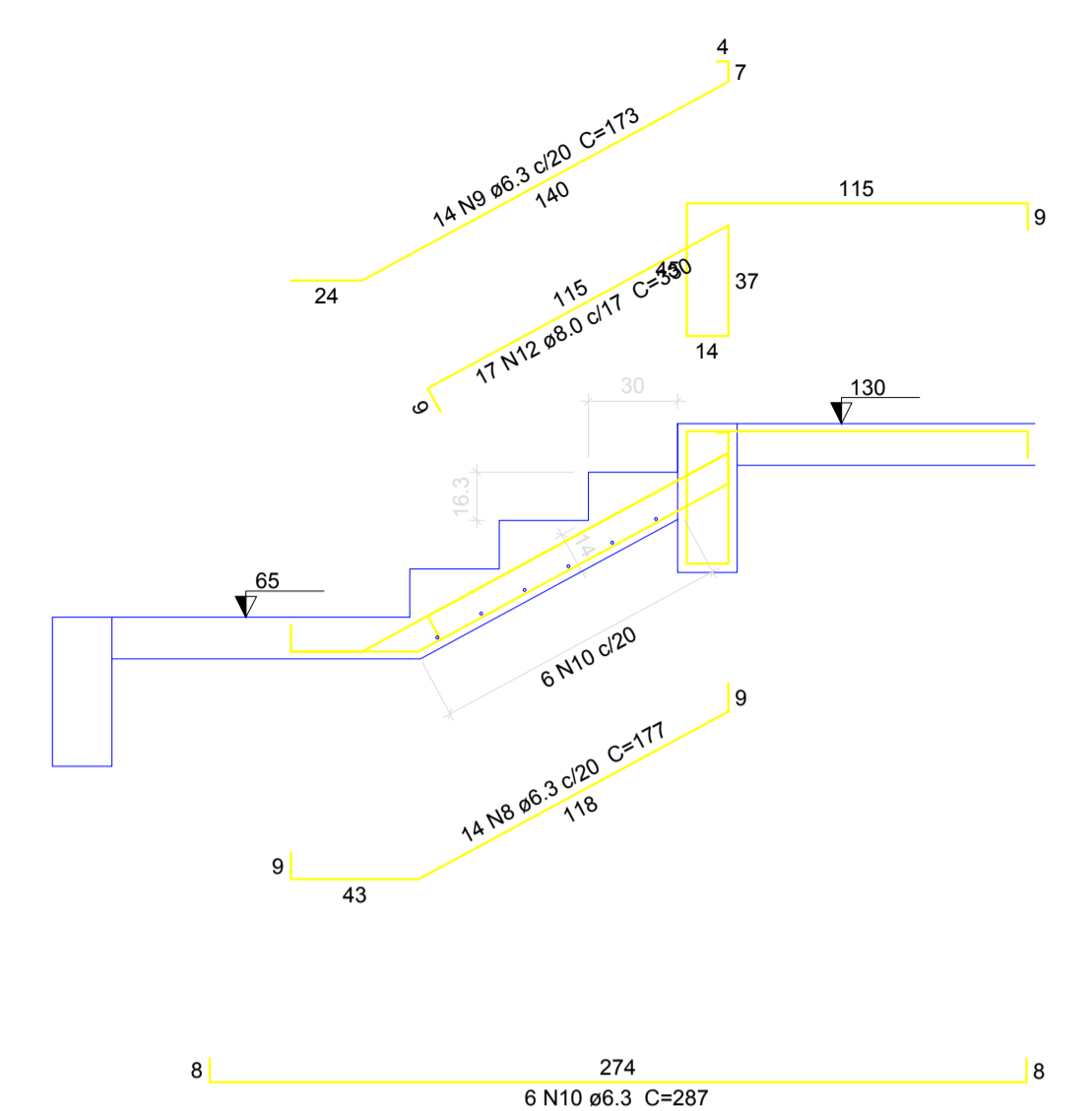
Armação positiva da escada E1

escala 1:25

Armação positiva das lajes do pavimento entrada (Eixo X)

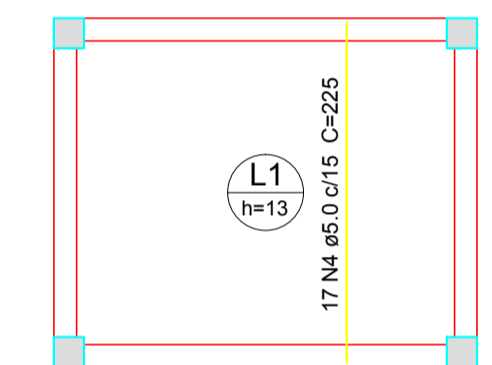


escala 1:50



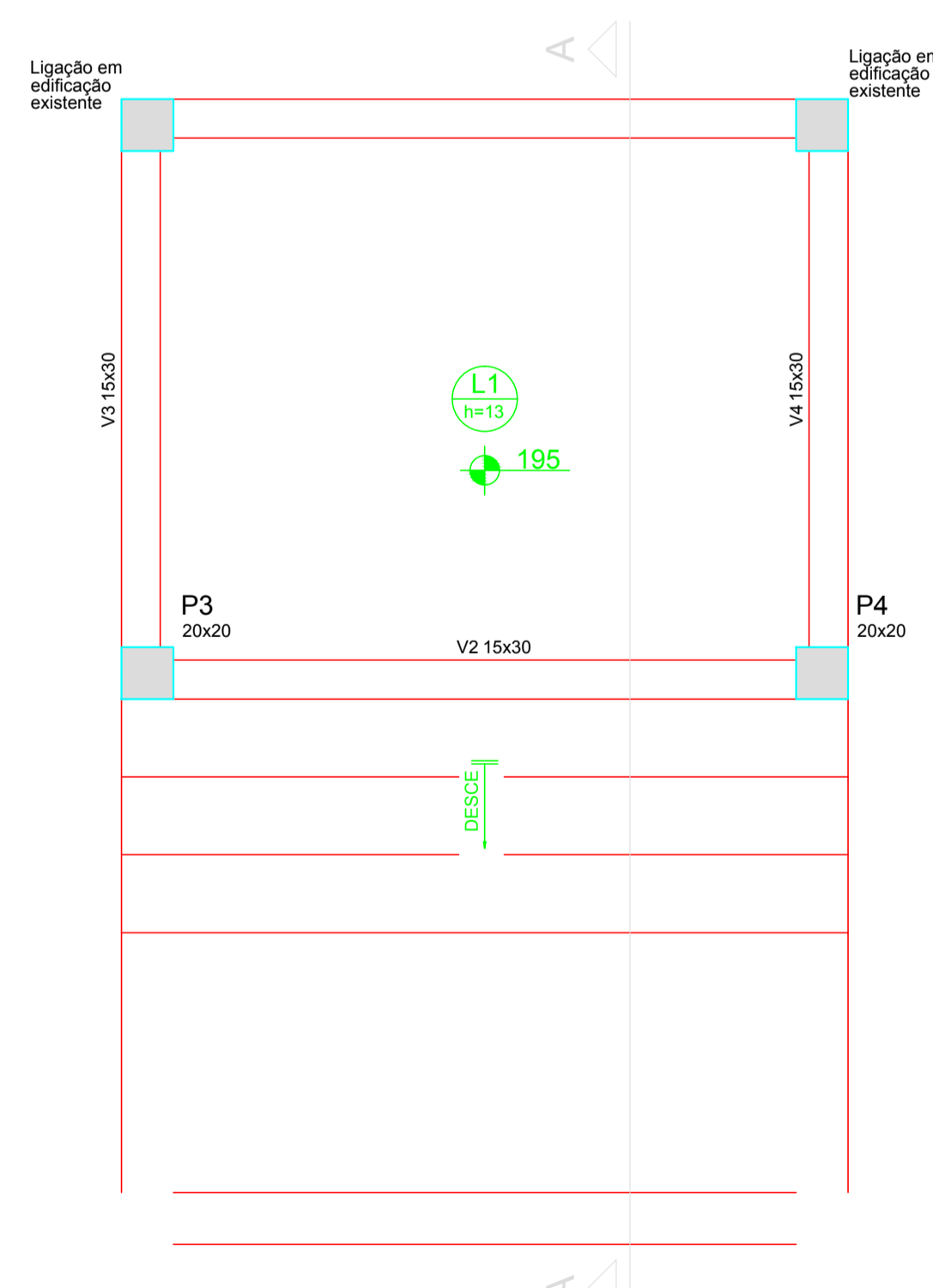
Corte A-A (LE1)

escala 1:25



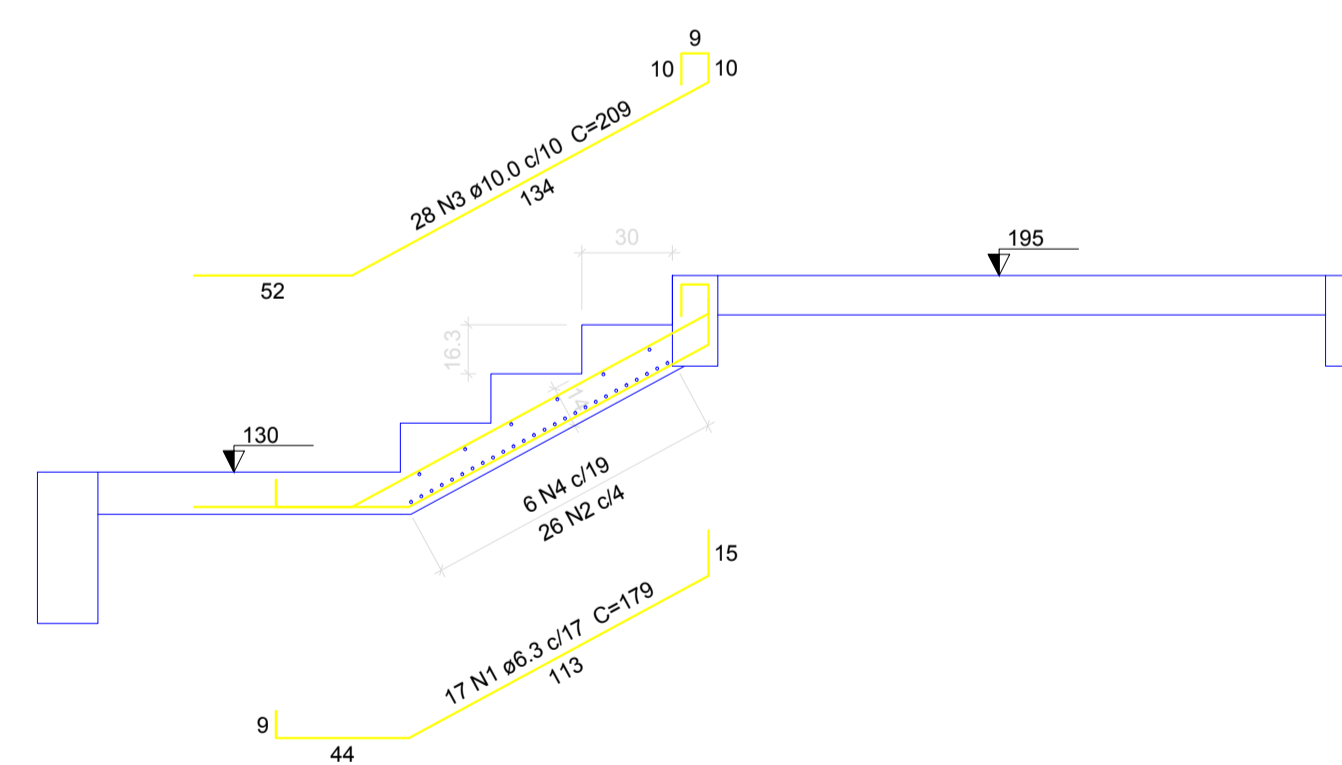
escala 1:50

Armação positiva das lajes do pavimento entrada (Eixo Y)



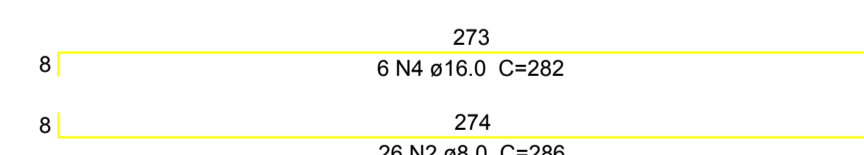
Armação positiva da escada E1

escala 1:25



Corte A-A (LE1)

escala 1:25



Wagner Engenharia

PROPRIETÁRIO	PREFEITURA MUNICIPAL DE IRINEÓPOLIS	
LOCALIZAÇÃO	RUA PARANÁ, 200- CENTRO - IRINEÓPOLIS/SC	
DESCRIÇÃO	EDIFICAÇÃO DO CENTRO DE EDUCAÇÃO INFANTIL NOSSA SENHORA APARECIDA	
PROJETO	ESTRUTURAL ESCADA FRENTE	ÁREA TOTAL DA CONSTRUÇÃO
	Lojes e lances de escada	1285,63m ²
ESCALA	INDICADA	FRANCHA
DESENHO	Daiane C. Wagner	02/2
DATA	SET/2014	