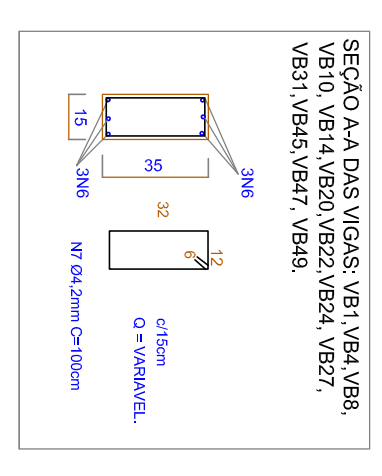
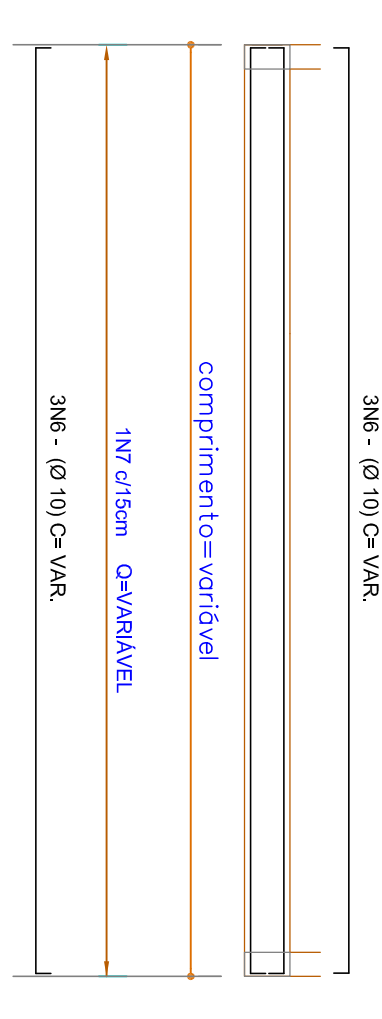
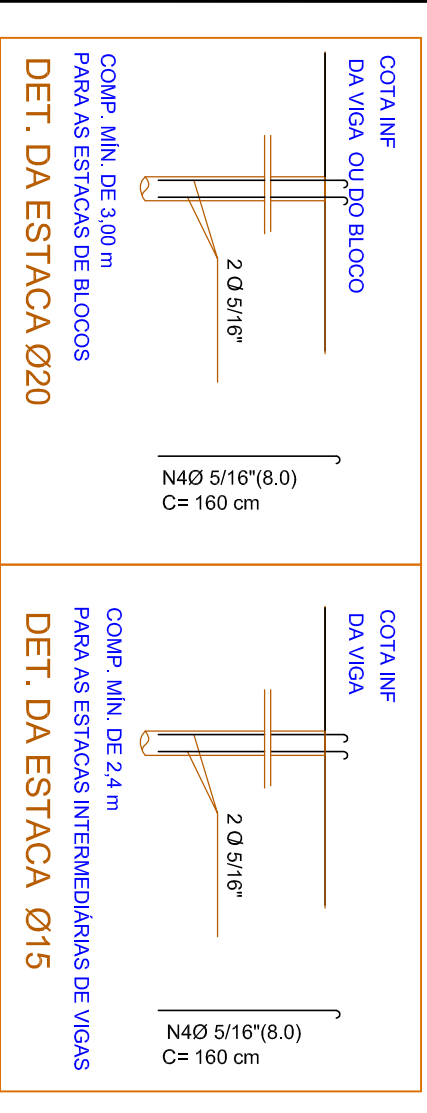


PL. LOCAÇÃO DE ESTACAS, FORMAS DE BLOCOS E VIGAS DE BALDRAME E PILARES

ESCALA: 1:50

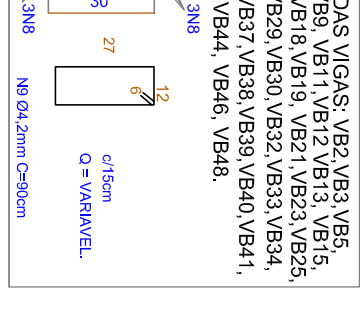
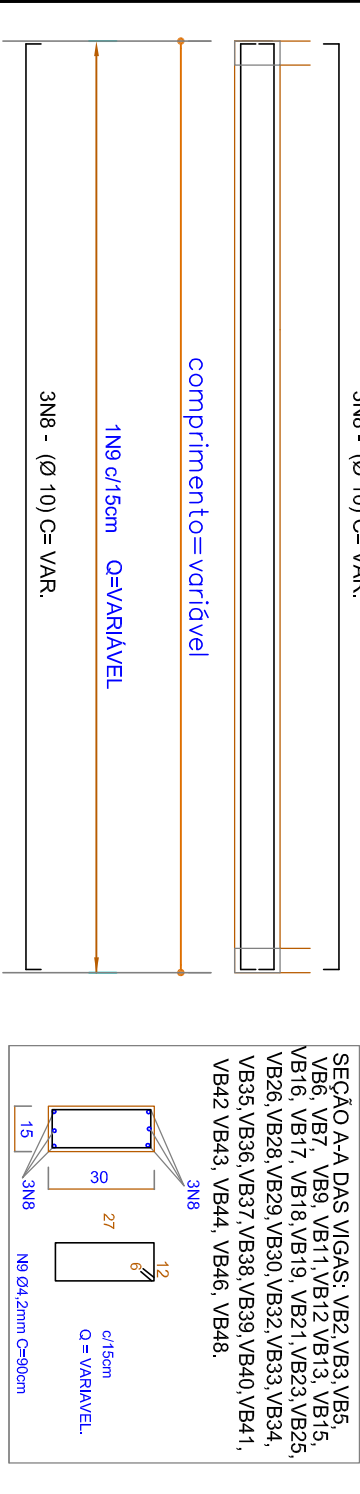
VIGAS DE BALDRAME

VB1(15X35) IDEM P/ VB4, VB8, VB10, VB14, VB20, VB22, VB24, VB27, VB31, VB45, VB47, VB49.

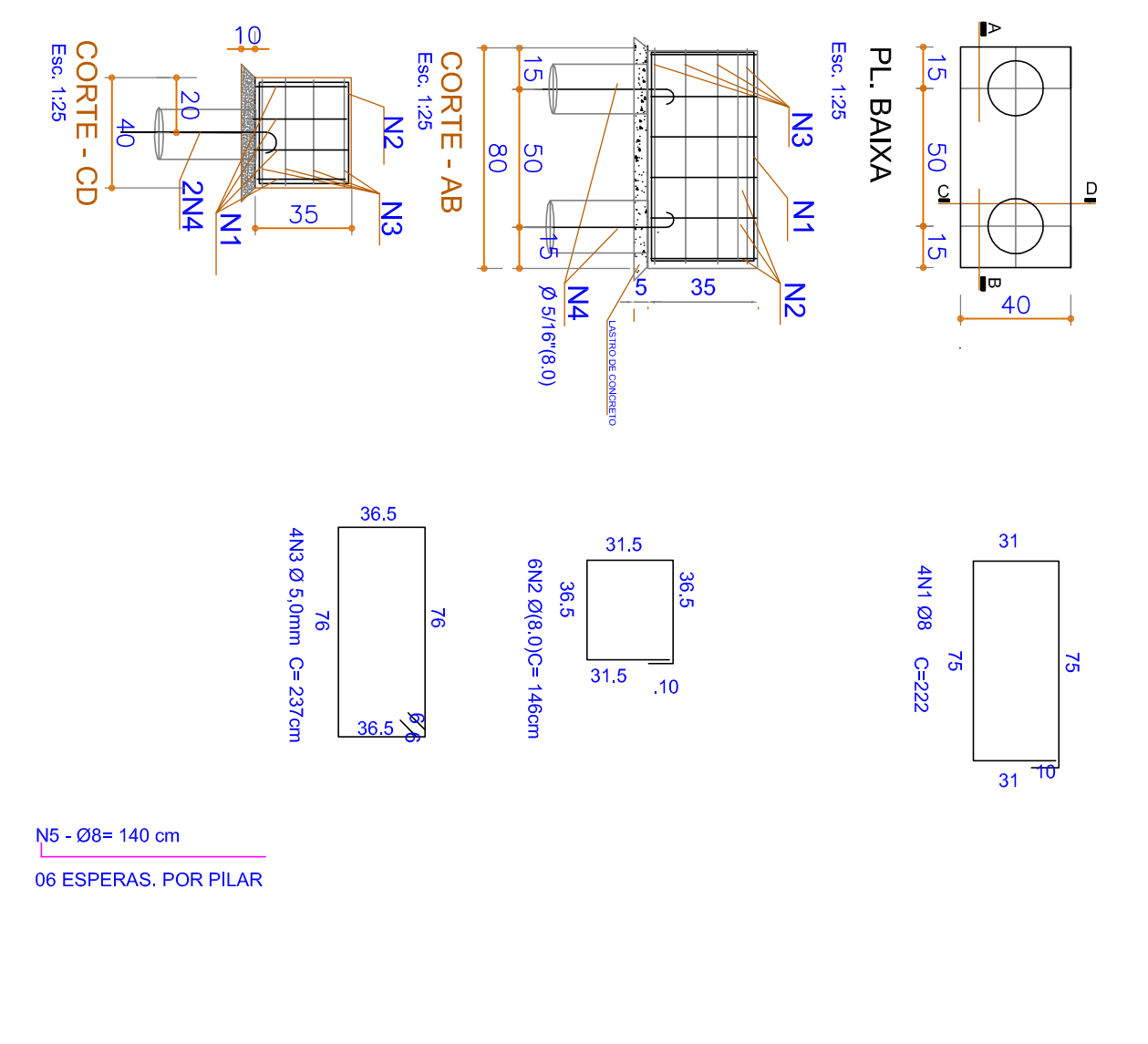


VIGAS DE BALDRAME

VB2(15X30) IDEM P/ VB3, VB5, VB6, VB7, VB9, VB11, VB12, VB13, VB15, VB16, VB17, VB18, VB19, VB21, VB23, VB25, VB26, VB28, VB29, VB30, VB32, VB33, VB34, VB35, VB36, VB37, VB38, VB39, VB40, VB41, VB42, VB43, VB44, VB46, VB48.



BLOCO DE 2 ESTACAS



RESUMO DAS ARMADURAS DO BLOCO

POSICÃO DA ARMADURA NO BLOCO	DIAM (mm)	PESO (kg/m)	QUANT	COMPARTIMENTO	PESO TOTAL (kg)
N1	50A	0,40	4	2,22	3,72
N2	50A	0,40	6	1,46	10,22
N3	60A8	0,15	4	2,37	1,49
N4	50A	0,40	4	1,66	6,80
SOMA					2,27

VOLUME DE CONCRETO = 0,172m³ (Vol = 18 m³)

ESTRUTURAL

UNIDADE BÁSICA DE SAÚDE
PREFEITURA MUNICIPAL DE IRINEÓPOLIS

Projeto: **EDIFICAÇÃO EM ALVENARIA PARA FINS SAÚDE**

Local: **IRINEÓPOLIS - SC**

Projeto: **JAP**

Arquiteto: **JAP**

Data: **04/2014**

TIPO: **01/03**

INDICADAS