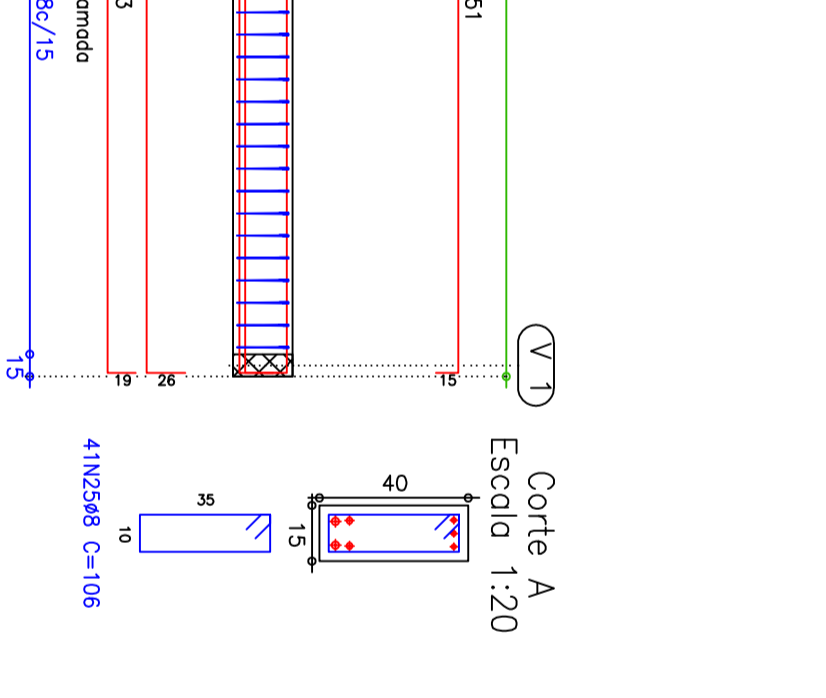
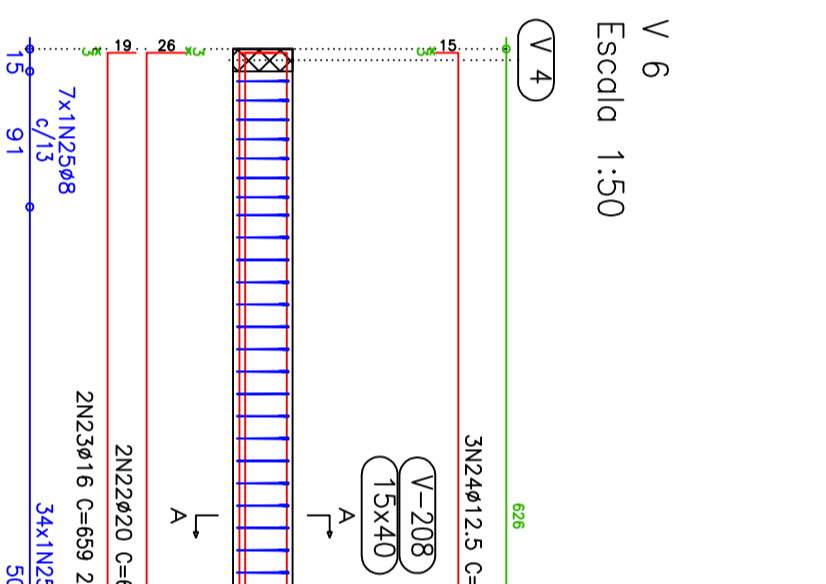
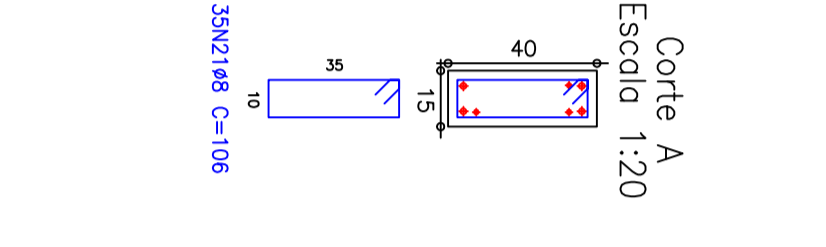
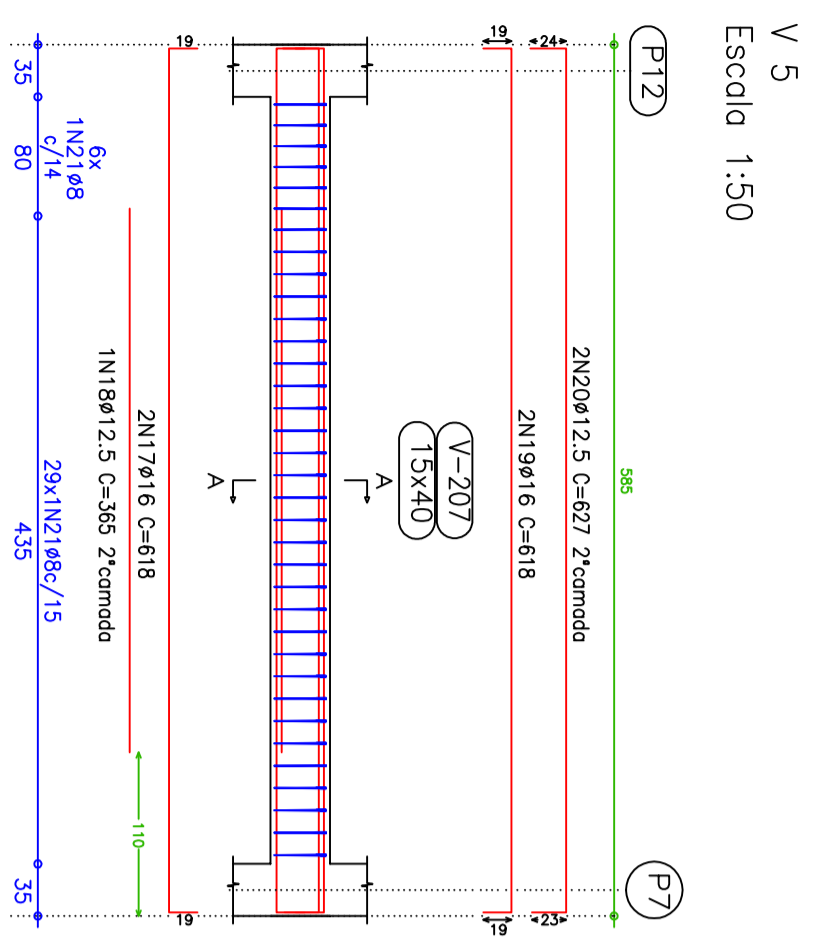
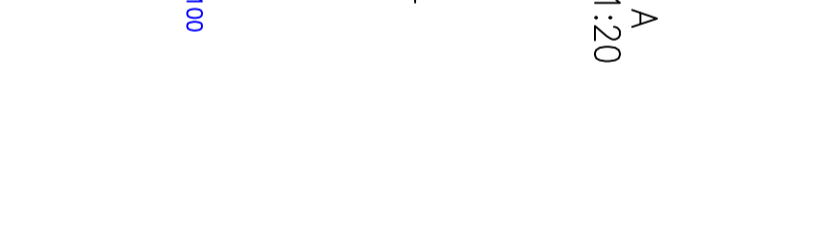
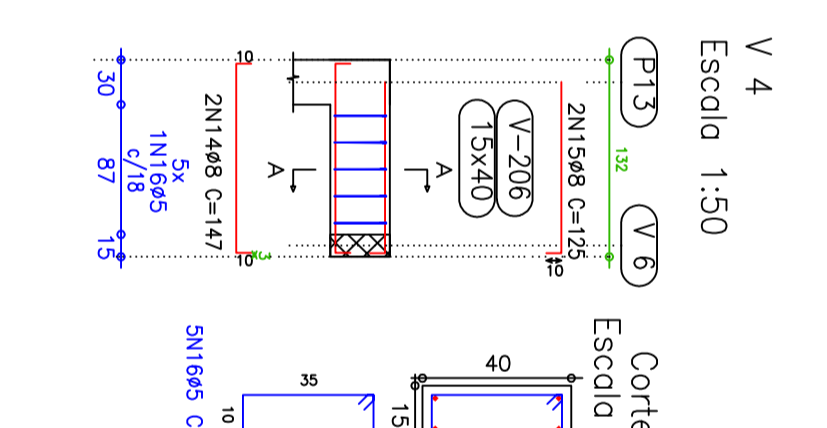
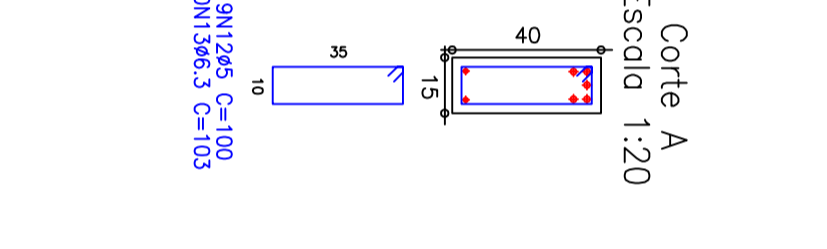
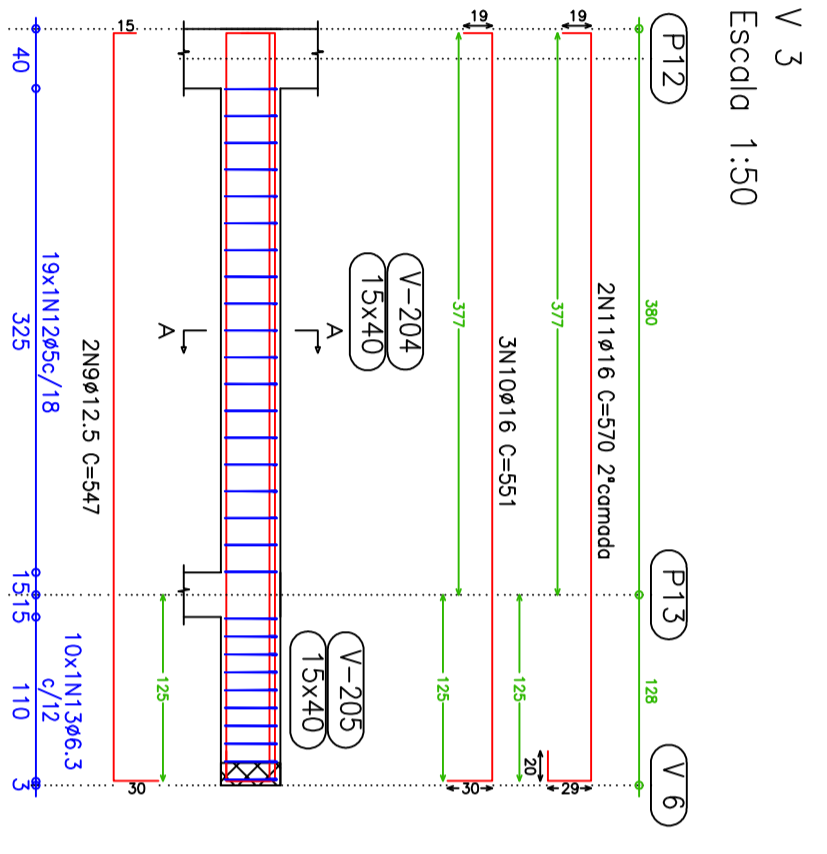
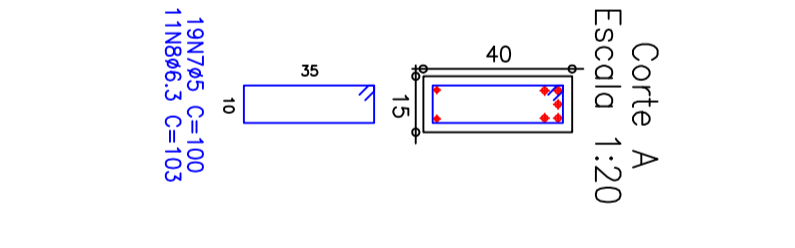
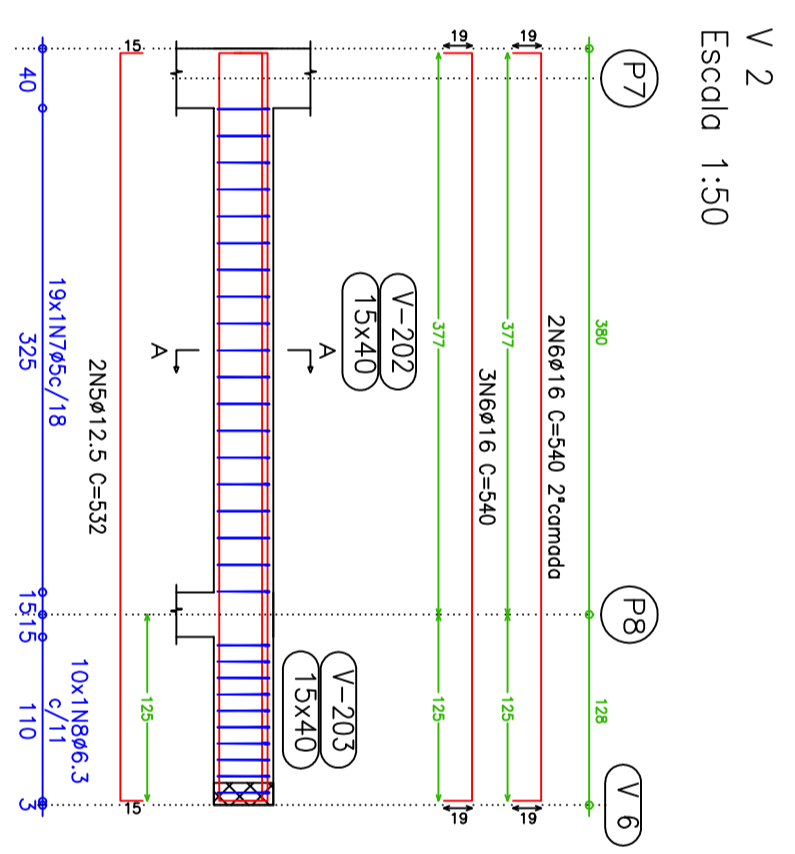
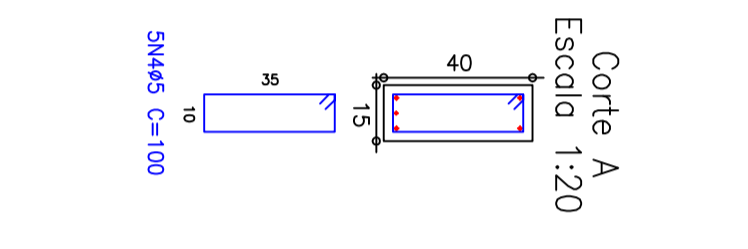
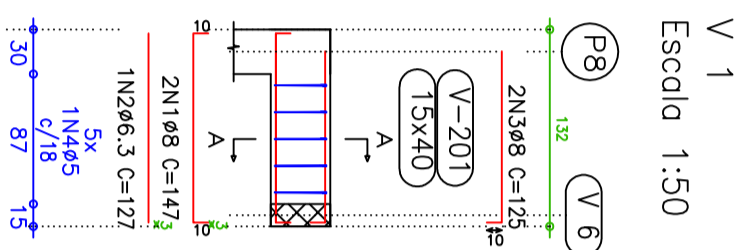


**Palco**  
 Formas  
 Concreto: C20, em geral  
 CA-50-A e CA-60-B  
 Mf: Momento fletor de cálculo por metro de largura (kN x m/m)  
 V: Esforço cortante de cálculo por metro de largura (kN/m)  
 Escala: 1:50



Elemento	Formas (m <sup>2</sup> )	Volume (m <sup>3</sup> )	Barros (kg)
LAJES	26.30	1.79	38
Vigas: fundo	3.24	1.45	313
Forma lateral	14.47	1.60	0.16
Pilares (Sup. Formas)	1.60	3.40	389
<b>Total</b>	<b>45.61</b>	<b>6.24</b>	<b>729</b>
Índices (por m <sup>2</sup> )	1.465	0.109	12.49

Elemento	Pos.	Diam.	Q.	Dob.	Reita	Dob.	Comp.	Total	CA-50-A	CA-60-B		
V 1	1	Ø8	2	10	127	10	147	294	1.2			
	2	Ø6.3	1	127	127	127	127	250	0.3			
	3	Ø8	2	115	10	100	100	500	1.0			
	4	Ø5	5							0.8		
<b>Total+10%:</b>									<b>2.8</b>	<b>0.9</b>		
V 2	5	Ø12.5	2	15	502	15	532	1064	10.4			
	6	Ø16	5	19	502	19	540	2700	42.4			
	7	Ø5	19				100	1900		3.0		
	8	Ø6.3	10				103	1030		2.5		
	<b>Total+10%:</b>									<b>60.8</b>	<b>3.3</b>	
	V 3	9	Ø12.5	2	15	502	30	547	1094	10.7		
		10	Ø16	3	19	502	30	551	1653	26.0		
		11	Ø16	2	19	502	49	570	1140	17.9		
12		Ø5	19				100	1900		3.0		
13		Ø6.3	10				103	1030		2.5		
<b>Total+10%:</b>									<b>62.8</b>	<b>3.3</b>		
V 4		14	Ø8	2	10	127	10	147	294	1.2		
		15	Ø8	2	115	10	100	125	250	1.0		
		16	Ø5	5				100	500		0.8	
		<b>Total+10%:</b>									<b>2.4</b>	<b>0.9</b>
		V 5	17	Ø16	2	19	580	19	618	1236	19.4	
			18	Ø12.5	1	19	365	19	365	365	3.6	
19			Ø16	2	19	580	19	618	1236	19.4		
20	Ø12.5		2	24	580	23	627	1254	12.3			
21	Ø8		35				106	3710	14.6			
<b>Total+10%:</b>									<b>76.2</b>	<b></b>		
V 6	22	Ø20	2	26	621	26	673	1346	33.3			
	23	Ø16	2	19	621	19	659	1318	20.7			
	24	Ø12.5	3	15	621	15	651	1953	19.2			
	25	Ø8	41				106	4346	17.1			
	<b>Total+10%:</b>									<b>99.3</b>	<b></b>	

Resumo Aço	Comp. total (m)	Peso +10% (kg)	Total
Palco			
Vigas			
CA-50-A Ø6.3	21.9	6	
Ø8	91.4	39	
Ø12.5	57.3	62	
Ø16	92.8	160	
Ø20	13.5	37	
CA-60-B Ø5	48.0	8	
<b>Total</b>			<b>312</b>

Palco  
 Desenho de vigas  
 Concreto: C20, em geral  
 Aço: CA-50-A e CA-60-B  
 Escala vigas: 1:50  
 Escala seções: 1:20

prancha

5/10

ESTRUTURAL

projeto