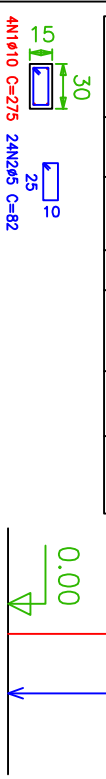


Pilares que terminam em Cintas
 Concreto: C20, em geral
 Aço: CA-50-A e CA-60-B
 Escala: 1:50

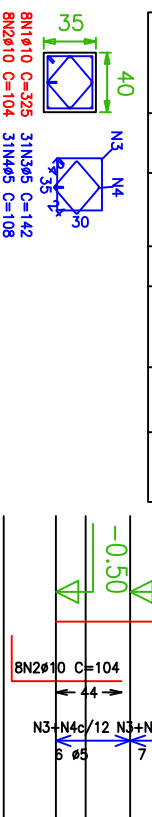
P1=P2=P3=P4=P5=P6=P9
 P11=P14=P15=P18=P19

Aço	Pos.	Diam.	Q.	Comp. (cm)	Total (cm)	x 12
CA-50-A	1	Ø10	4	275	1100	13200
CA-60-B	2	Ø5	24	82	1968	23616



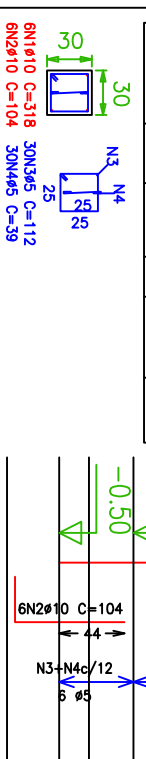
P7=P12

Aço	Pos.	Diam.	Q.	Comp. (cm)	Total (cm)	x 2
CA-50-A	1	Ø10	8	325	2600	5200
"	2	Ø10	8	104	832	1664
CA-60-B	3	Ø5	31	142	4402	8804
"	4	Ø5	31	108	3348	6696



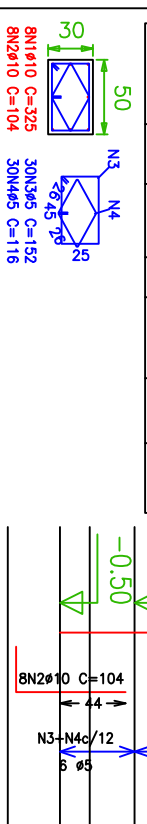
P10

Aço	Pos.	Diam.	Q.	Comp. (cm)	Total (cm)
CA-50-A	1	Ø10	6	318	1908
"	2	Ø10	6	104	624
CA-60-B	3	Ø5	30	112	3360
"	4	Ø5	30	39	1170



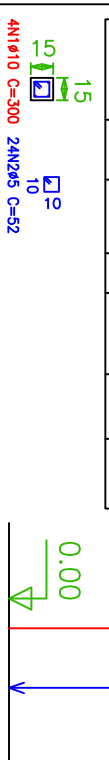
P16=P17

Aço	Pos.	Diam.	Q.	Comp. (cm)	Total (cm)	x 2
CA-50-A	1	Ø10	8	325	2600	5200
"	2	Ø10	8	104	832	1664
CA-60-B	3	Ø5	30	152	4560	9120
"	4	Ø5	30	116	3480	6960



P20=P21=P22=P23

Aço	Pos.	Diam.	Q.	Comp. (cm)	Total (cm)	x 4
CA-50-A	1	Ø10	4	300	1200	4800
CA-60-B	2	Ø5	24	52	1248	4992



Resumo Aço Cintas Pilares	Comp. total (m)	Peso+10% (kg)	Total
CA-50-A Ø10	342.6	237	237
CA-60-B Ø5	647.2	112	112
Total			349

prancha

6/10

projeto

ESTRUTURAL