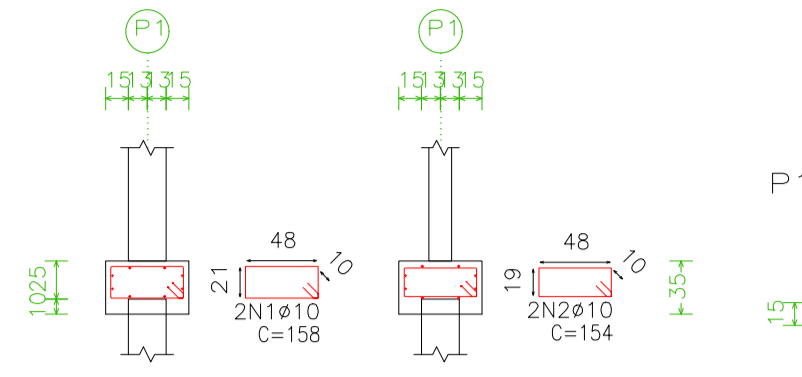
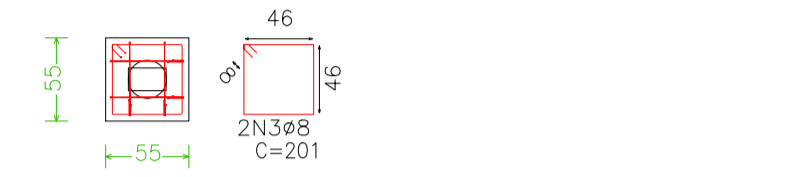


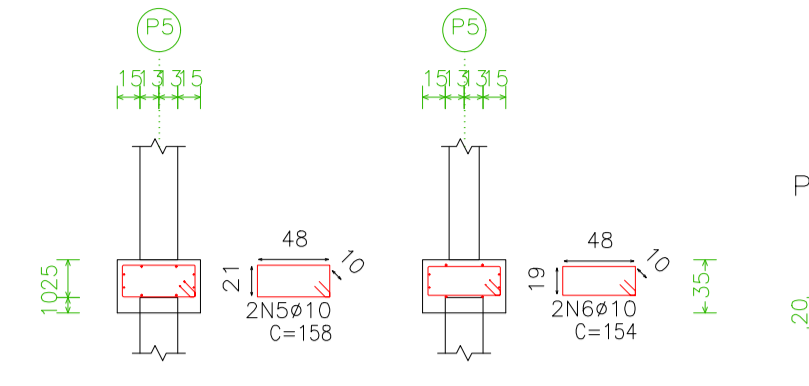
P1, P2, P3, P4, P13, P14, P19, P20, P29, P30, P31 e P32



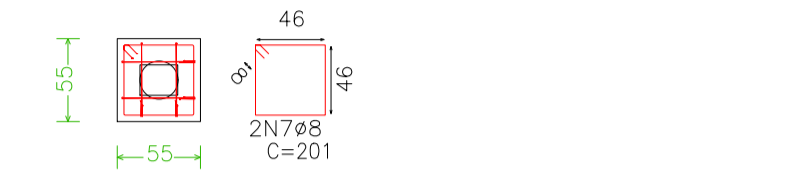
Estacas: Estaca Escavada Mecanicamente Encamisada



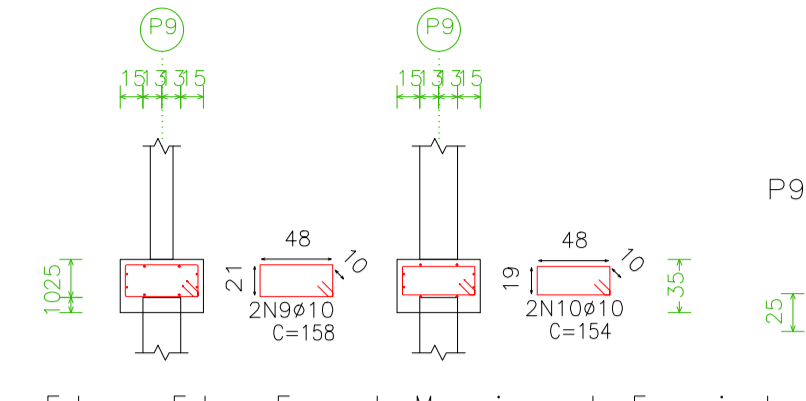
P5, P6, P7, P8, P11, P16, P17, P22, P25, P26, P27 e P28



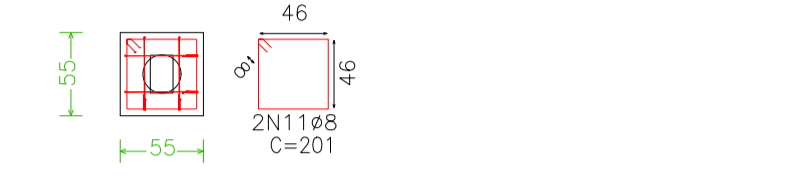
Estacas: Estaca Escavada Mecanicamente Encamisada



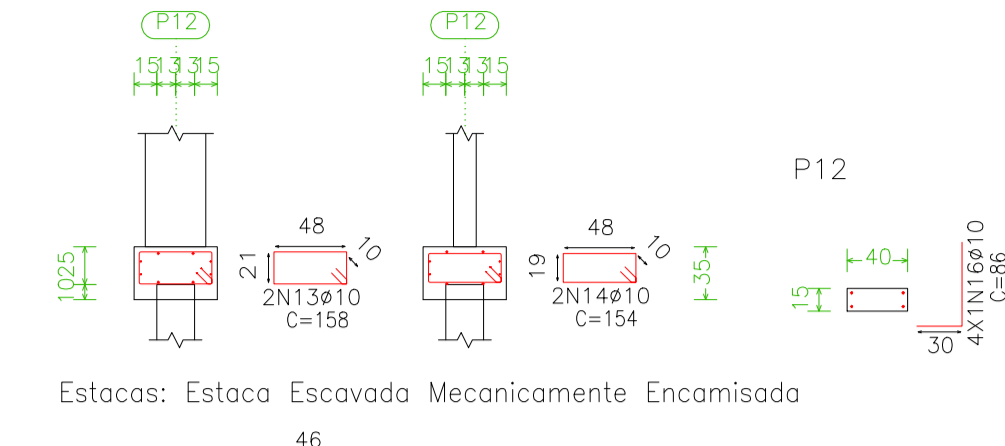
P9, P10, P23 e P24



Estacas: Estaca Escavada Mecanicamente Encamisada



P12, P15, P18 e P21



Estacas: Estaca Escavada Mecanicamente Encamisada



Fundação  
Detalhamento fundação  
Concreto: C30, em geral  
Escala: 1:50

Fundação  
Formas  
Concreto: C30, em geral  
Escala: 1:50

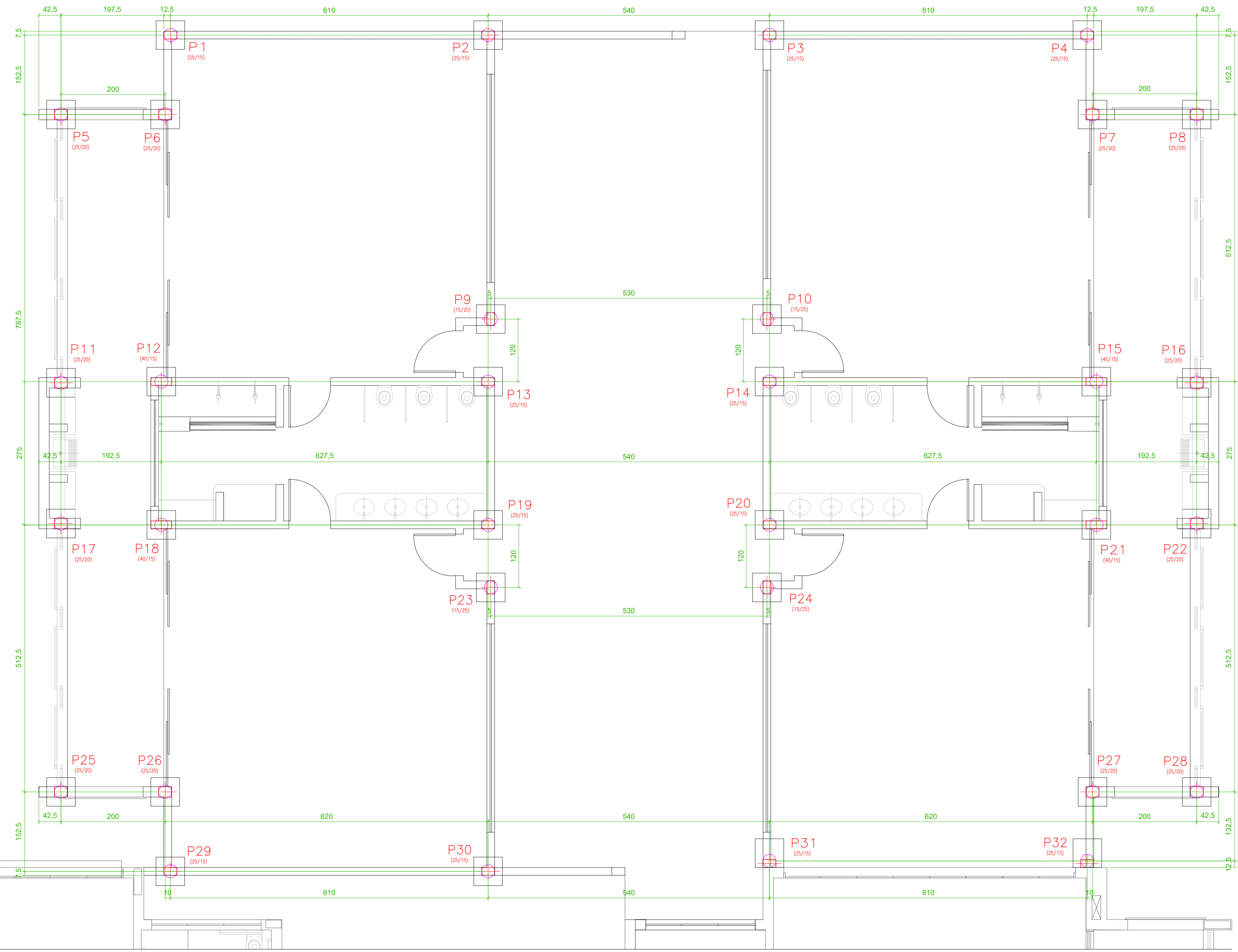


Tabela de estacas

32xEstaca Escavada Mecanicamente Encamisada

Concreto circular: 425.0 cm  
 Capacidade de carga em combinações permanentes: 20.4 kN  
 Capacidade de carga em combinações acidentais: 20.4 kN

Elemento	Pos.	Diam.	Q.	Dob. (cm)	Ret. (cm)	Dob. (cm)	Comp. (cm)	Total (cm)	CA-50-A (kg)	CA-60-B (kg)
P1=P2=P3=P4=P13 P14=P19=P20=P29 P30=P31=P32	1	Ø10	2	158			158	316	2.0	
	2	Ø10	2	154			154	308	1.9	
	3	Ø8	2	201			201	402	1.6	
	4	Ø10	4	30	56		86	344	2.2	
Total+10% (x12):									8.5	
									102.0	
P5=P6=P7=P8=P11 P16=P17=P22=P25 P26=P27=P28	5	Ø10	2	158			158	316	2.0	
	6	Ø10	2	154			154	308	1.9	
	7	Ø8	2	201			201	402	1.6	
	8	Ø10	4	30	56		86	344	2.2	
Total+10% (x12):									8.5	
									102.0	
P9=P10=P23=P24	9	Ø10	2	158			158	316	2.0	
	10	Ø10	2	154			154	308	1.9	
	11	Ø8	2	201			201	402	1.6	
	12	Ø10	4	30	56		86	344	2.2	
Total+10% (x4):									8.5	
									34.0	
P12=P15=P18=P21	13	Ø10	2	158			158	316	2.0	
	14	Ø10	2	154			154	308	1.9	
	15	Ø8	2	201			201	402	1.6	
	16	Ø10	4	30	56		86	344	2.2	
Total+10% (x4):									8.5	
									34.0	

Resumo Aço Fundação	Comp. total (m)	Peso+10% (kg)	Total
CA-50-A	Ø8	128.6	56
	Ø10	309.8	214
			270

prancha

1/7

ESTRUTURAL