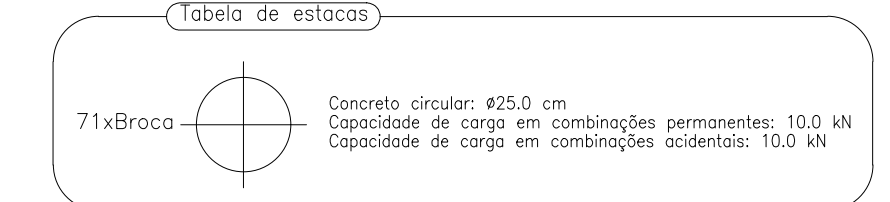
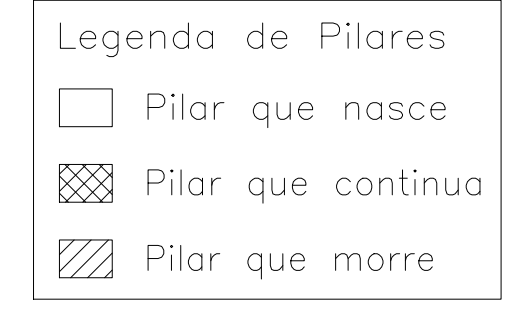
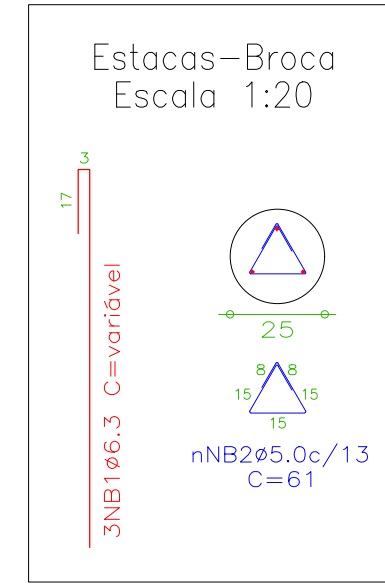


Elemento	Pos.	Diam.	Q.	Dob. (cm)	Ret. (cm)	Dob. (cm)	Comp. (cm)	Tota. (cm)	CA-50-A	CA-60-B	
				(cm)	(cm)	(cm)	(cm)	(cm)	(kg)	(kg)	
E=Pa2=Pa4=Pa5	1	Ø10	2	158	158	316	2.0				
	2	Ø10	2	154	154	308	1.9				
	3	Ø8	2	201	201	402	1.6				
	4	Ø10	4	30	61	364	2.3				
								Total+10%	8.6		
										34.4	
P1	5	Ø10	13	VAR.	VAR.	2743	17.2				
	6	Ø10	15	VAR.	VAR.	2925	18.4				
	7	Ø10	4	30	92	122	4.8				
									Total+10%	42.6	
										32.5	
P2	1	Ø12.5	12	61	154	61	276	3312	32.1		
	2	Ø12.5	12	60	153	60	273	3276	32.1		
	3	Ø10	4	30	100	130	520	1056	3.3		
									Total+10%	74.7	
										9.1	
P3	1	Ø10	6	41	160	41	242	1452	9.1		
	2	Ø10	6	41	160	41	242	1452	9.1		
	3	Ø10	12	286	286	572	21.6				
	4	Ø10	12	230	230	460	21.7				
	5	Ø12.5	4	30	90	120	4.8				
								Total+10%	42.8		
										17.2	
P4	6	Ø10	13	VAR.	VAR.	2743	17.2				
	7	Ø10	15	VAR.	VAR.	2925	18.4				
	8	Ø10	8	30	92	122	4.8				
									Total+10%	45.9	
										33.0	
P5	1	Ø12.5	12	63	154	63	280	3360	32.6		
	2	Ø12.5	12	62	153	62	277	3324	32.6		
	3	Ø10	8	30	102	132	556	6.6			
								Total+10%	79.4		
										2.0	
P6	4	Ø10	2	158	158	316	2.0				
	5	Ø10	2	154	154	308	1.9				
	6	Ø8	2	201	201	402	1.6				
	7	Ø10	8	30	61	91	7.28				
								Total+10%	11.1		
										33.0	
P7	1	Ø12.5	12	63	154	63	280	3360	32.6		
	2	Ø12.5	12	62	153	62	277	3324	32.6		
	3	Ø16	4	30	124	154	616	6.6			
								Total+10%	62.8		
										54.0	
P8	4	Ø12.5	18	26	254	26	306	5508	54.0		
	5	Ø12.5	18	25	253	25	303	5454	53.5		
	6	Ø16	8	30	87	117	936	14.7			
									Total+10%	134.4	
										71.7	
P9	1	Ø12.5	18	26	354	26	406	7308	71.7		
	2	Ø12.5	25	25	253	25	303	7575	74.3		
	3	Ø12.5	5	30	74	104	832	8.2			
									Total+10%	169.6	
										33.0	
P10	4	Ø12.5	12	63	154	63	280	3360	32.6		
	5	Ø12.5	12	62	153	62	277	3324	32.6		
	6	Ø10	6	30	102	132	792	5.0			
								Total+10%	77.7		
										2.0	
P11	1	Ø10	2	158	158	316	2.0				
	2	Ø10	2	154	154	308	1.9				
	3	Ø8	2	201	201	402	1.6				
	4	Ø12.5	6	30	69	99	594	5.8			
								Total+10%	12.4		
										17.2	
P12	5	Ø10	13	VAR.	VAR.	2743	17.2				
	6	Ø10	15	VAR.	VAR.	2925	18.4				
	7	Ø12.5	4	30	100	130	520	18.4			
								Total+10%	44.8		
										70.7	
P13=P15	8	Ø10	6	41	160	41	242	1452	9.1		
	9	Ø10	6	41	160	41	242	1452	9.1		
	10	Ø10	12	286	286	572	21.6				
	11	Ø10	15	230	230	460	21.7				
	12	Ø10	4	30	82	112	448	2.8			
									Total+10%	70.7	
											141.4
											17.2
											18.4
											4.6
											44.2
											9.1
P16	4	Ø10	6	41	160	41	242	1452	9.1		
	5	Ø10	6	41	160	41	242	1452	9.1		
	6	Ø10	12	286	286	572	21.6				
	7	Ø10	15	230	230	460	21.7				
								Total+10%	44.2		
										72.3	
P17	1	Ø10	13	VAR.	VAR.	2743	17.2				
	2	Ø10	15	VAR.	VAR.	2925	18.4				
	3	Ø12.5	8	30	100	130	520	10.2			
									Total+10%	50.4	
										2.0	
Pa1=Pa3	4	Ø10	2	158	158	316	2.0				
	5	Ø10	2	154	154	308	1.9				
	6	Ø8	2	201	201	402	1.6				
								Total+10%	8.6		
										17.2	

Resumo Aço	Comp. total	Peso+10%	Total
Detalhamento Fundação	(m)	(kg)	
CA-50-A	Ø8	32.2	14
	Ø10	815.2	563
	Ø12.5	559.5	604
	Ø16	15.5	27
			1208



Estacas-Broca na profundidade de encontro com solo resistente, ou na profundidade mínima de 4m.