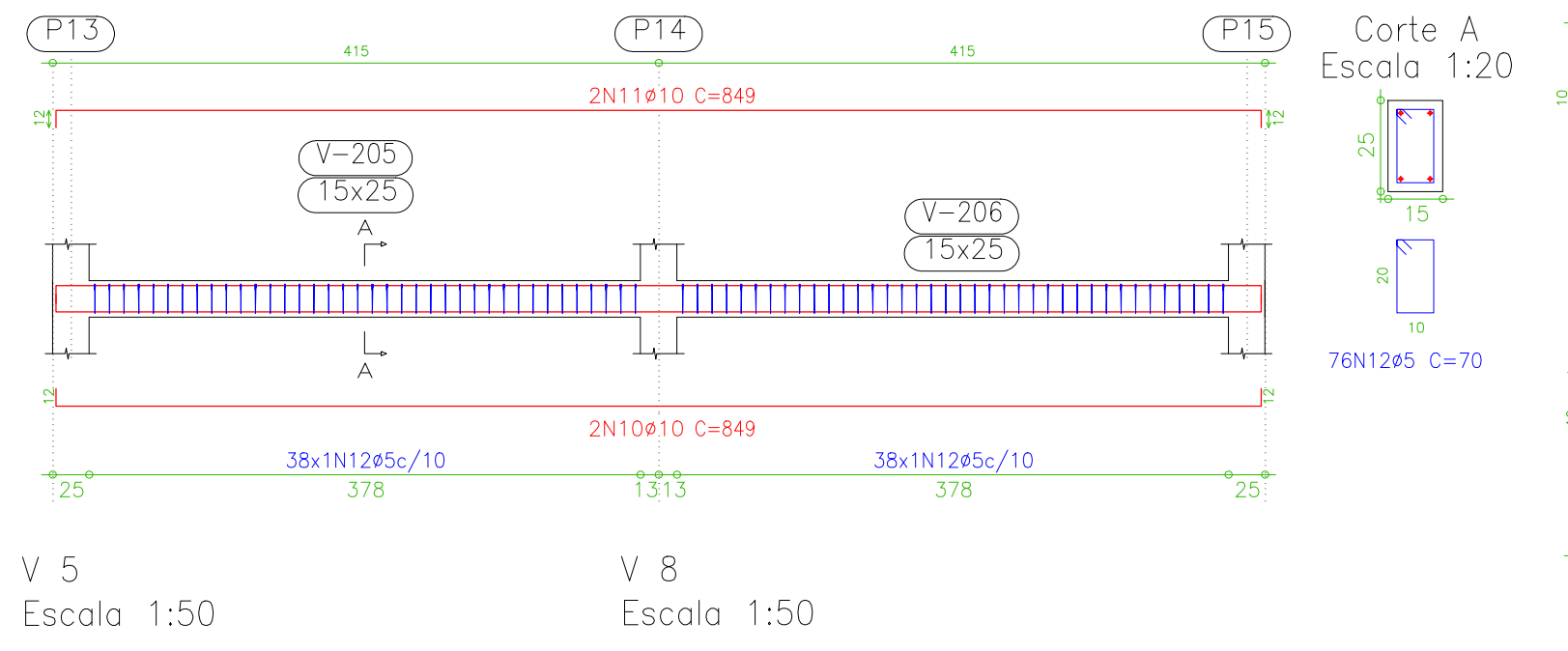
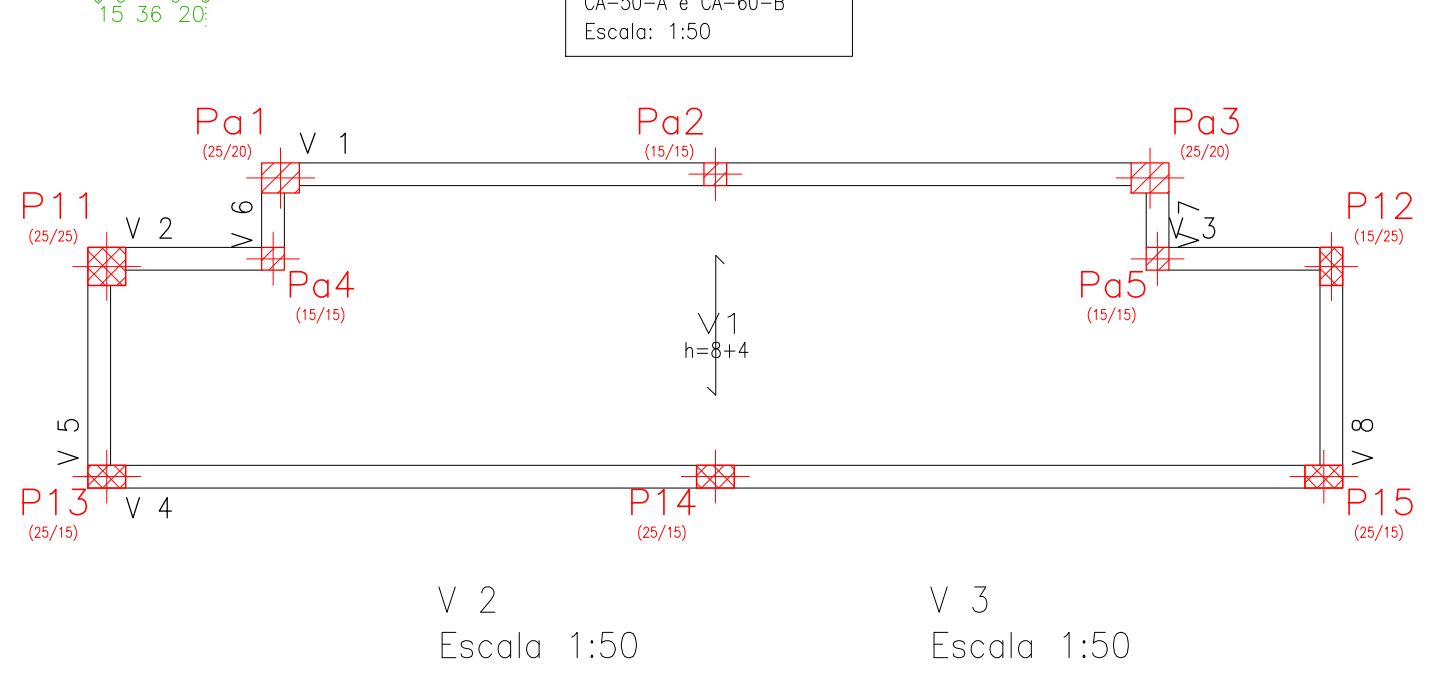
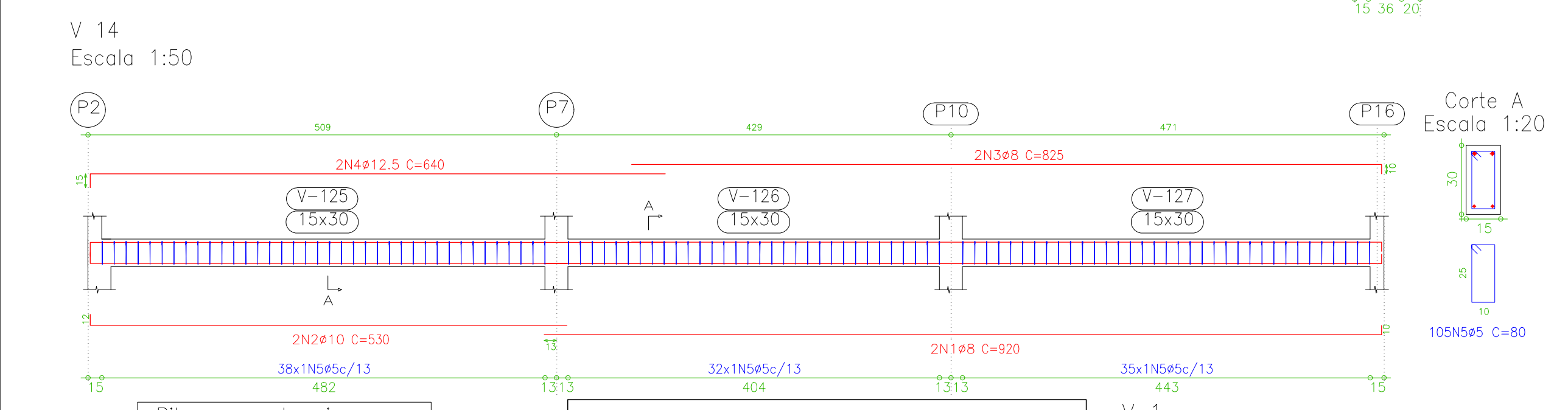
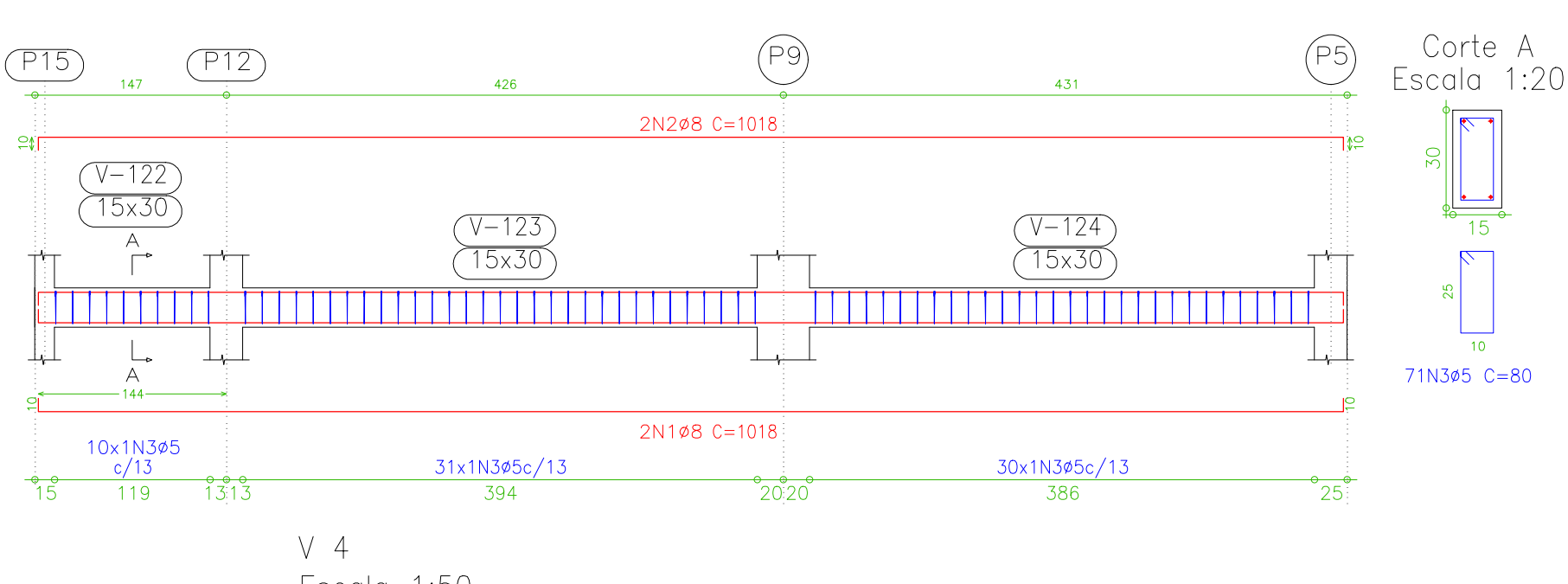
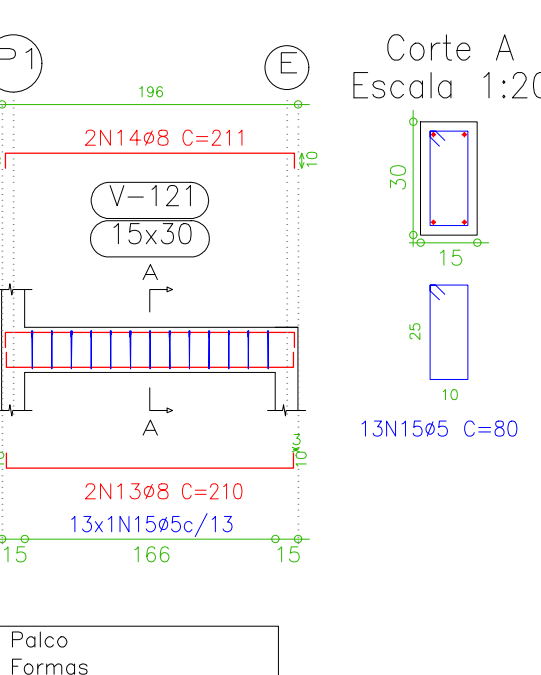
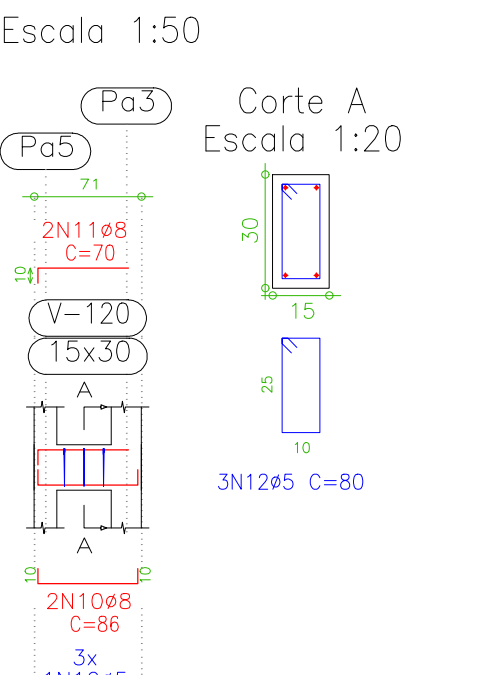
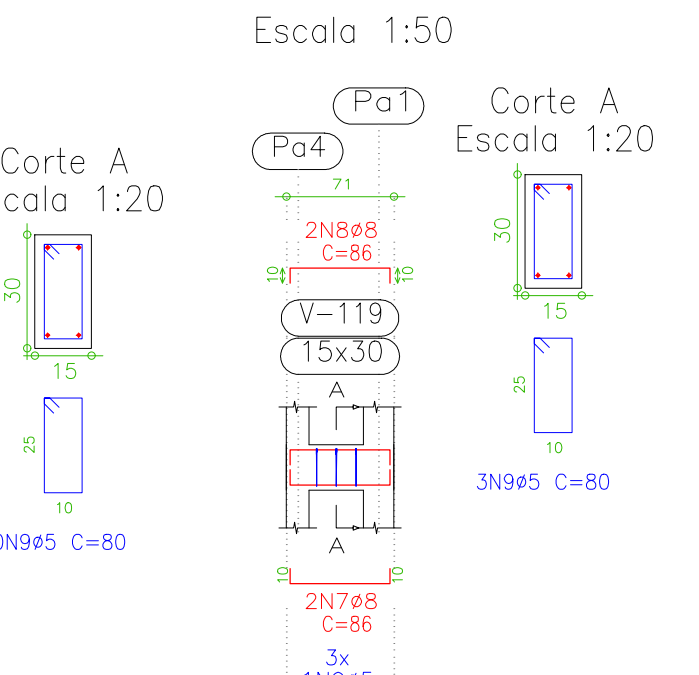
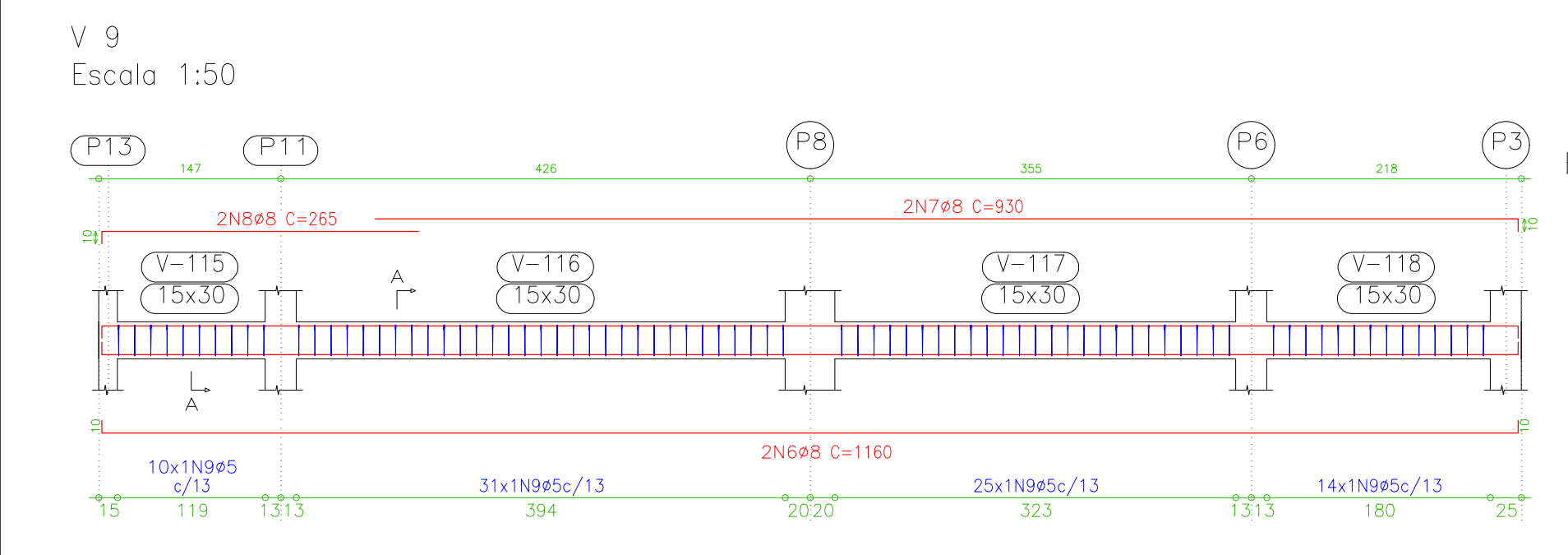
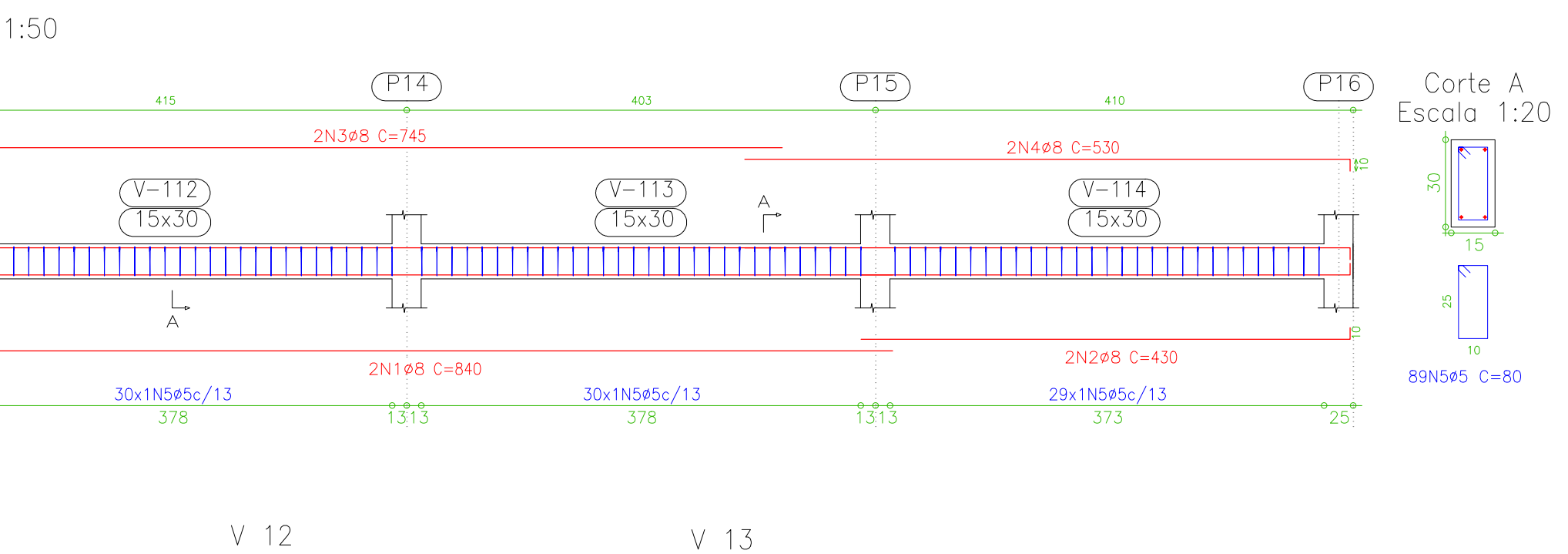
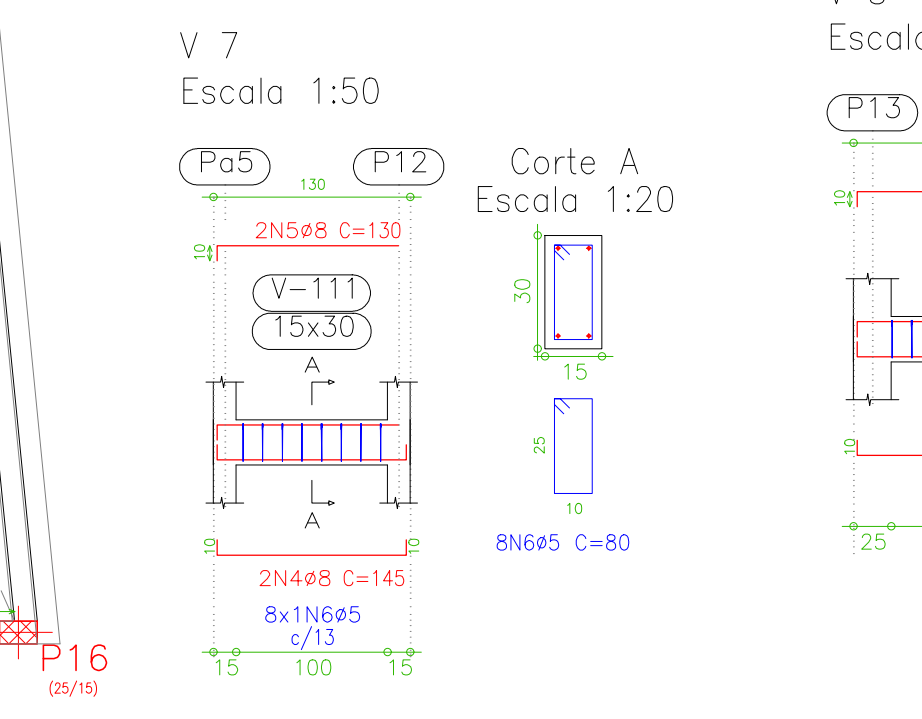
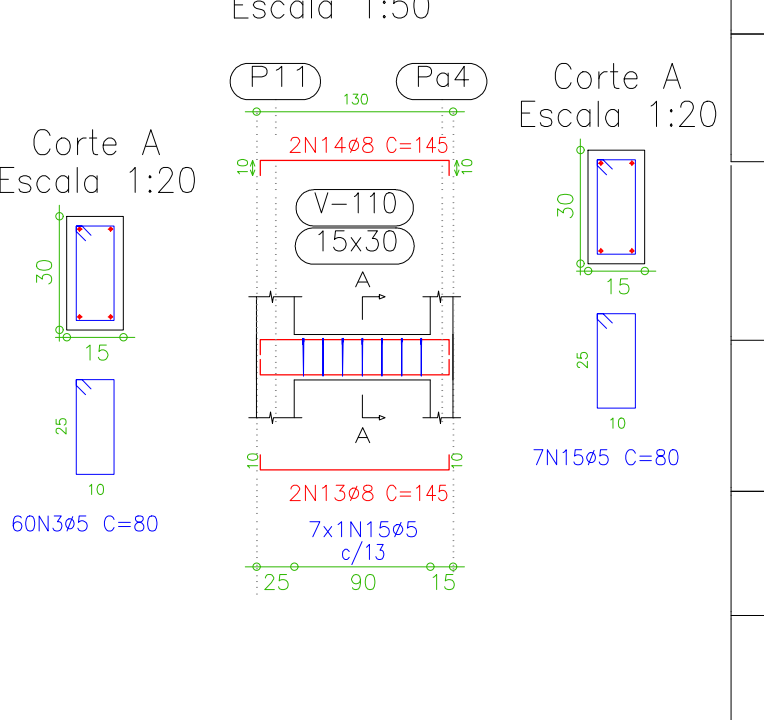
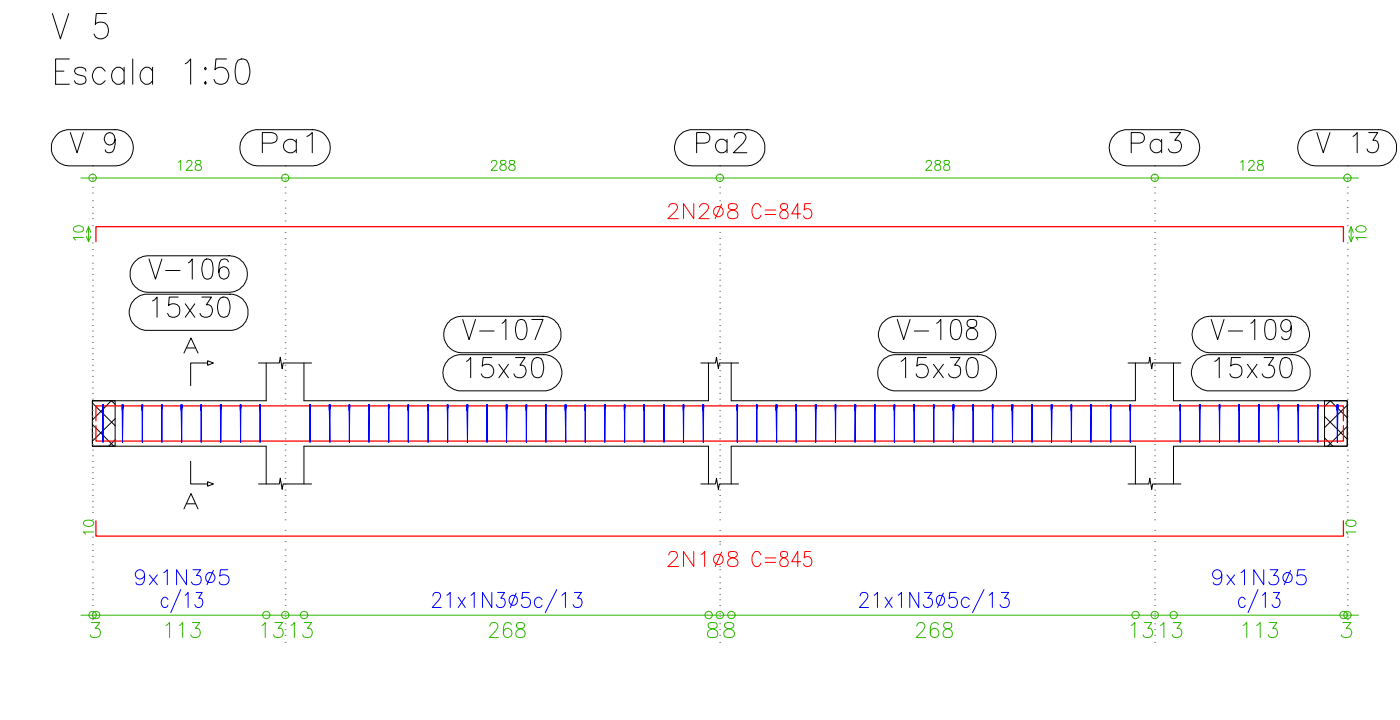
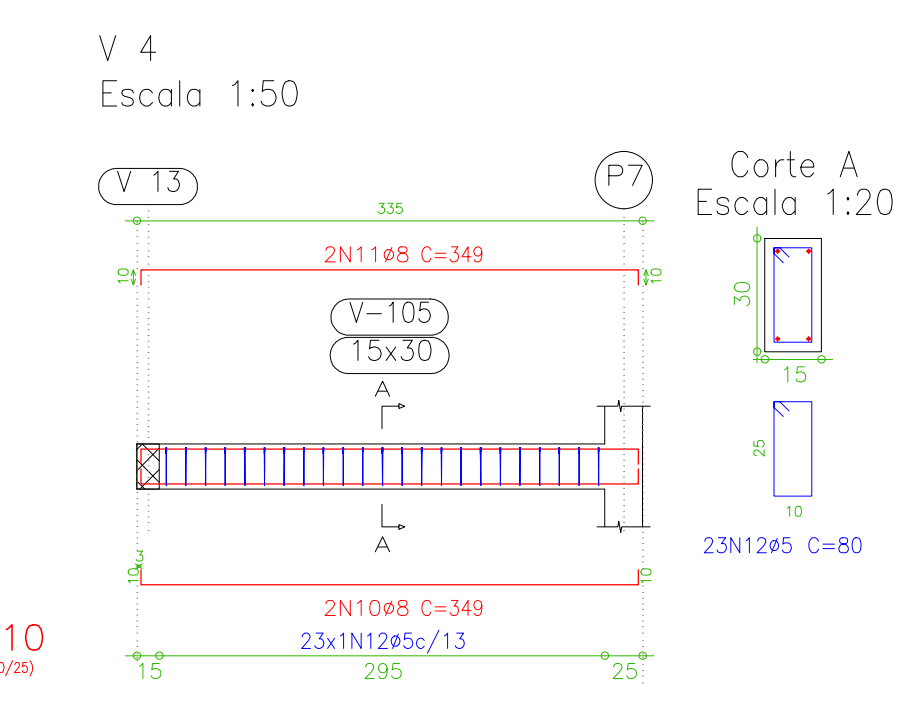
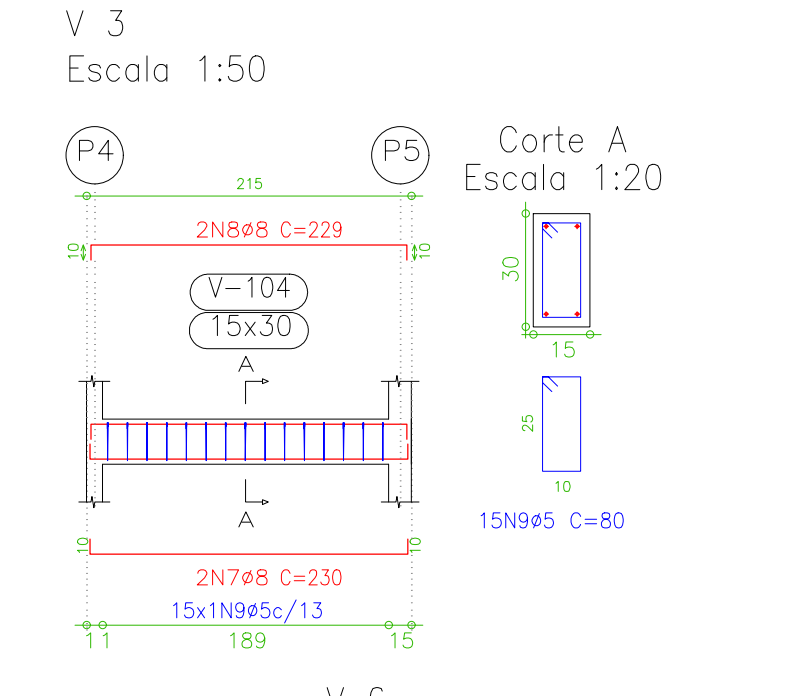
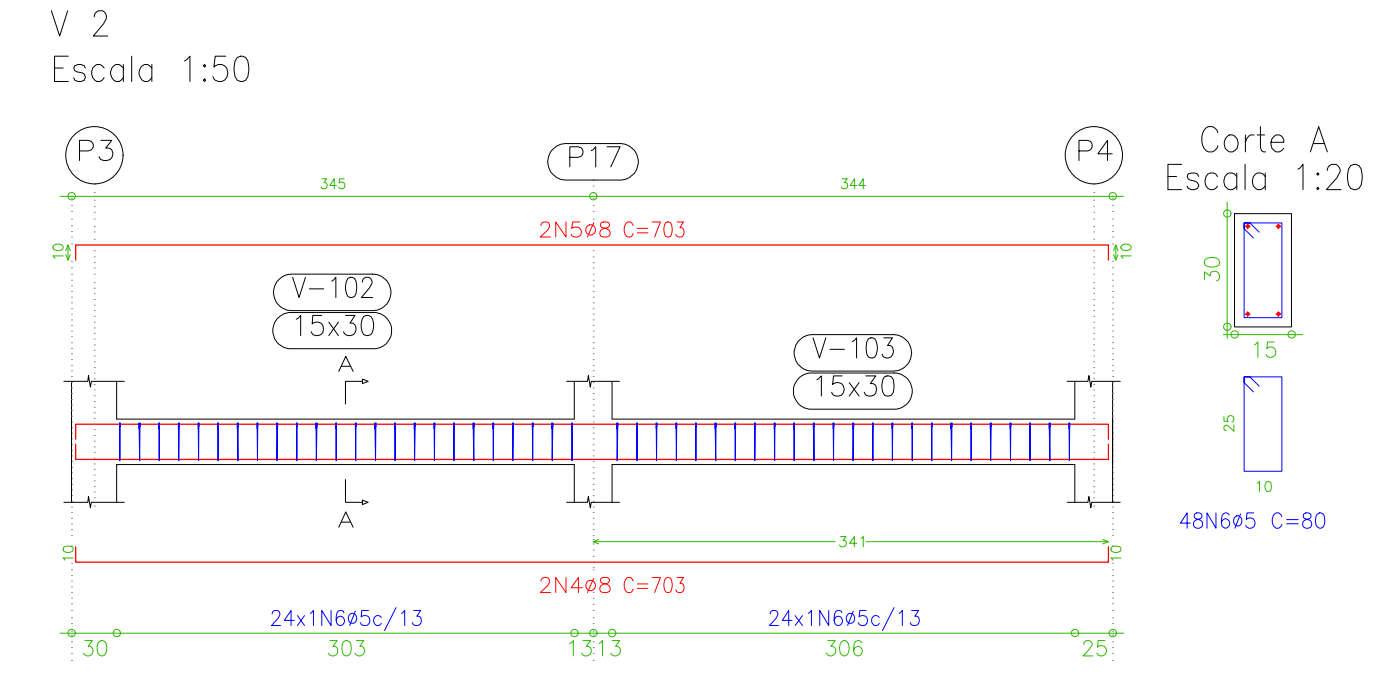
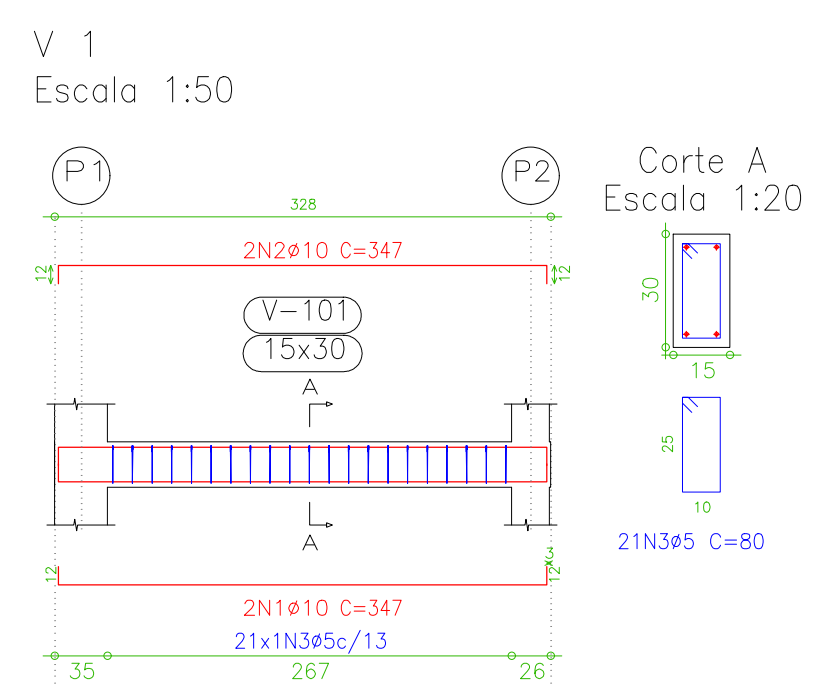
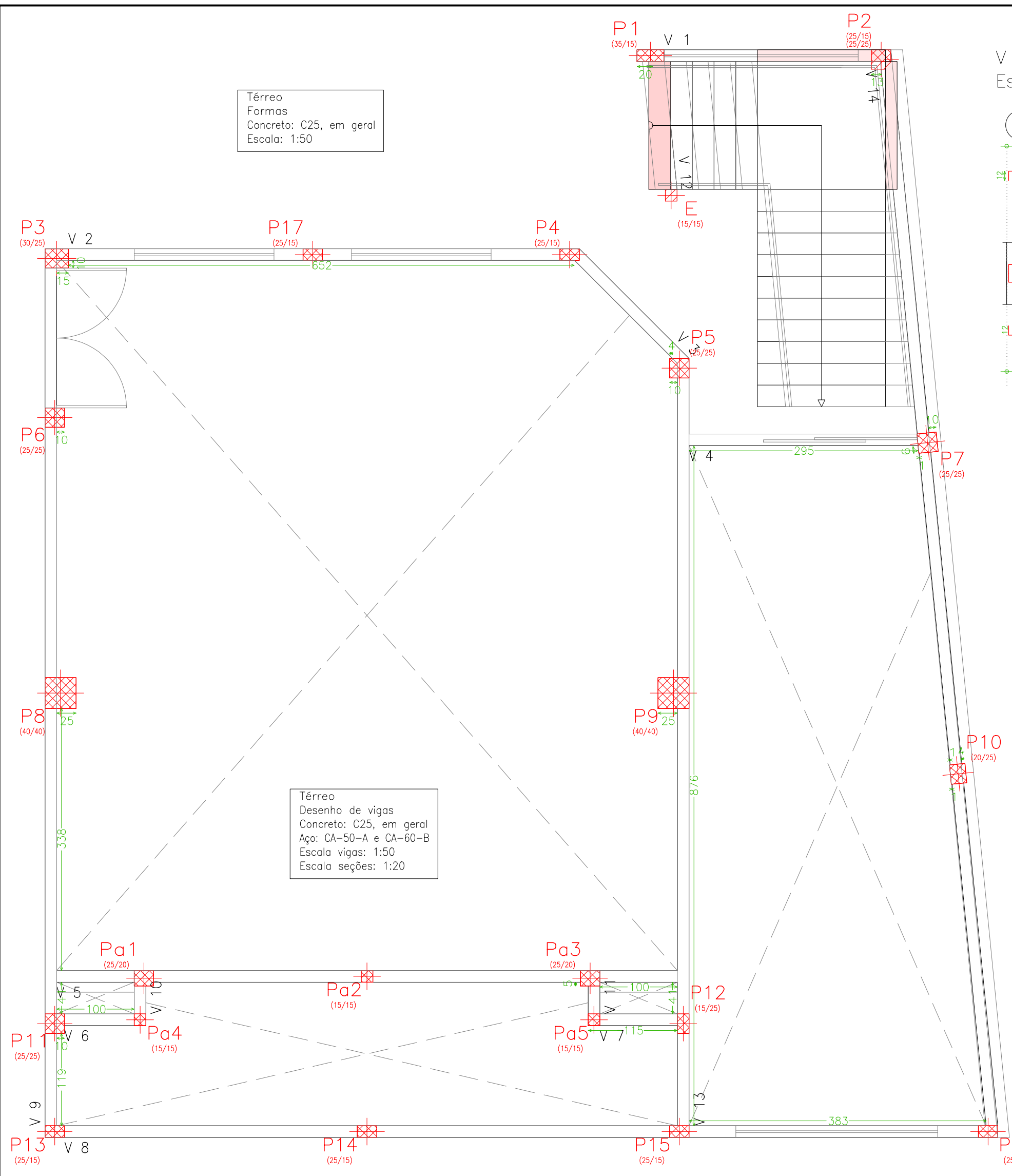


Térreo  
Formas  
Concreto: C25, em geral  
Escala: 1:50

Térreo  
Desenho de vigas  
Concreto: C25, em geral  
Aço: CA-50-A e CA-60-B  
Escala vigas: 1:50  
Escala seções: 1:20

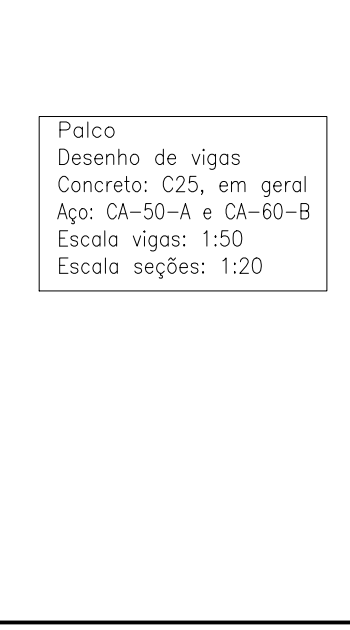
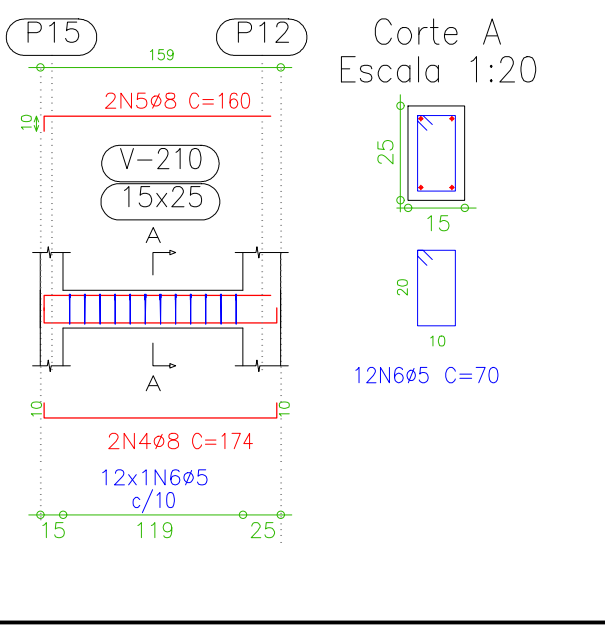
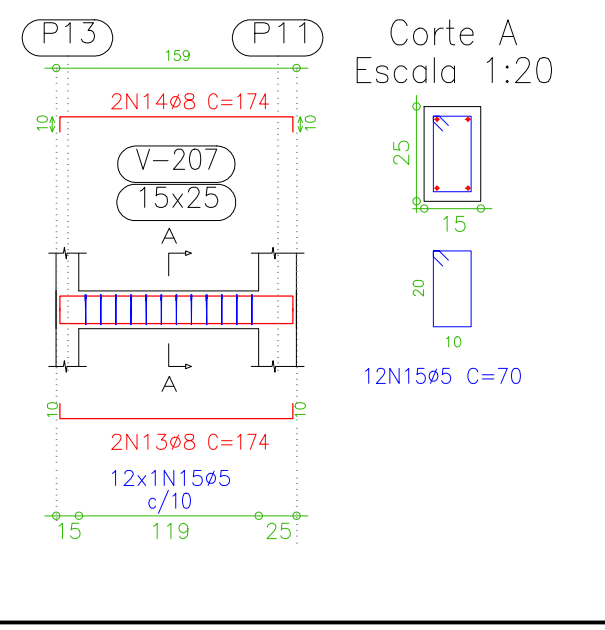
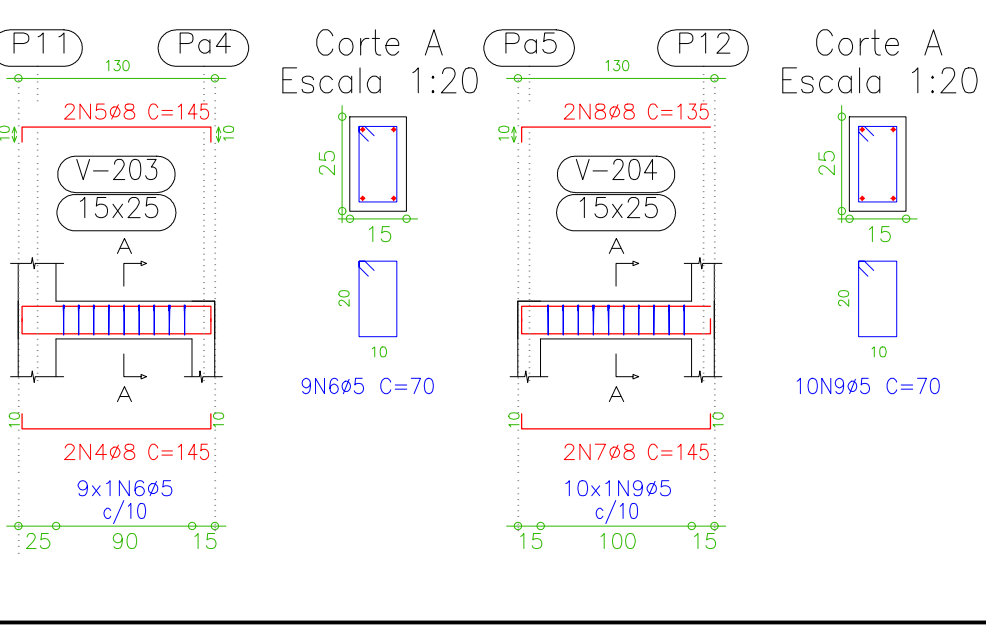
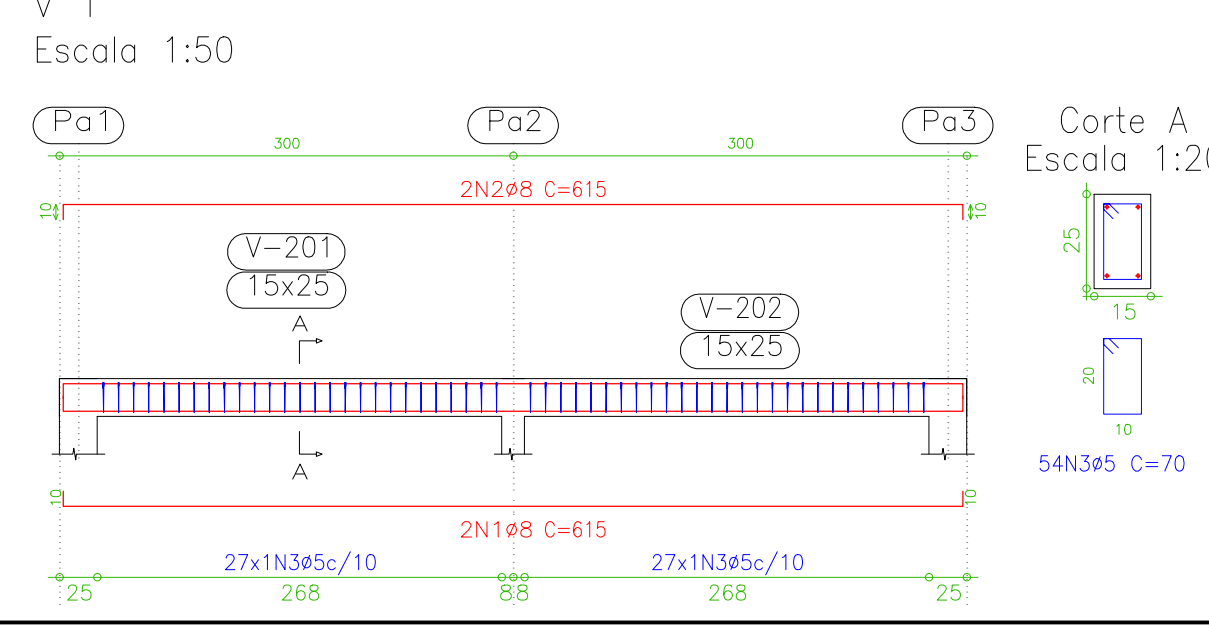


Pa1=Pa3

Aço	Pos.	Diam.	Q.	Comp.	Total	x 2
(cm)		(cm)		(cm)	(cm)	(cm)
CA-50-A	1	ø10	4	100	400	800
CA-60-B	2	ø10	4	98	392	784
CA-60-B	3	ø5	11	82	902	1804

Pa2=Pa4=Pa5

Aço	Pos.	Diam.	Q.	Comp.	Total	x 3
(cm)		(cm)		(cm)	(cm)	(cm)
CA-50-A	1	ø10	4	100	400	1200
CA-60-B	2	ø10	4	98	392	1176
CA-60-B	3	ø5	11	52	572	1716



Resumo Aço	Comp. total	Peso+10%	Total
Vigas	(m)	(kg)	
CA-50-A ø8	285,0	123	
ø10	24,5	17	
ø12,5	12,8	14	154
CA-60-B ø5	436,8	75	75
<b>Total</b>			<b>229</b>

Térreo - Superfície total 11,58 m<sup>2</sup>

Elemento	Formas (m <sup>2</sup> )	Volume (m <sup>3</sup> )	Barros (kg)
Vigas: fundo	10,32	3,48	229
Forma lateral	41,23		
Pilares (Sup. Formas)	0,30	0,02	12
<b>Total</b>	<b>51,85</b>	<b>3,50</b>	<b>241</b>
Índices (por m <sup>2</sup> )	4,478	0,302	20,81