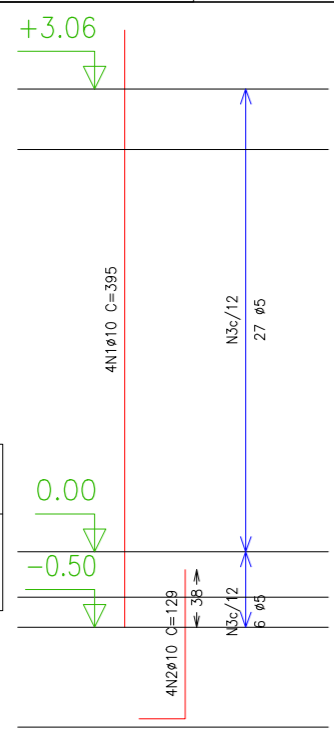
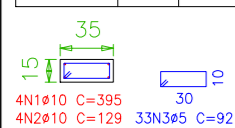


Pilares que terminam em Primeiro
 Concreto: C25, em geral
 Aço: CA-50-A e CA-60-B
 Escala: 1:50

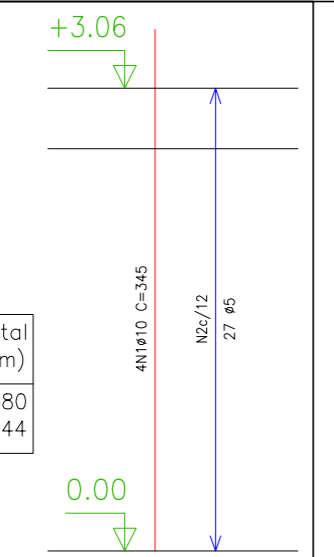
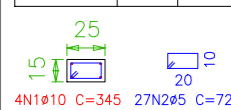
P1

Aço	Pos.	Diam.	Q.	Comp. (cm)	Total (cm)
CA-50-A	1	ø10	4	395	1580
"	2	ø10	4	129	516
CA-60-B	3	ø5	33	92	3036



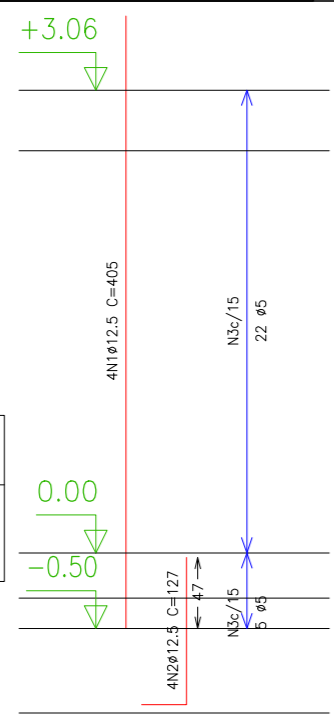
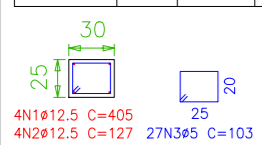
P2

Aço	Pos.	Diam.	Q.	Comp. (cm)	Total (cm)
CA-50-A	1	ø10	4	345	1380
CA-60-B	2	ø5	27	72	1944



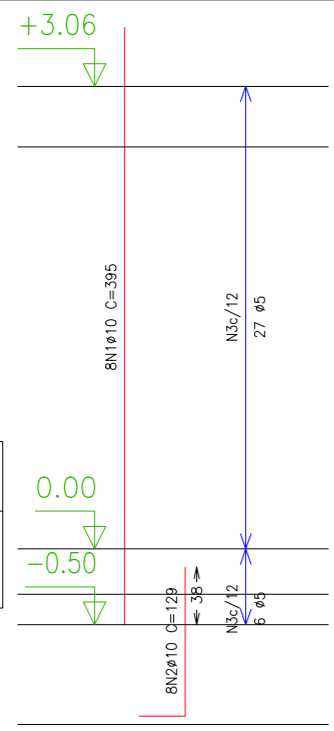
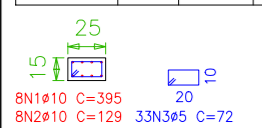
P3

Aço	Pos.	Diam.	Q.	Comp. (cm)	Total (cm)
CA-50-A	1	ø12.5	4	405	1620
"	2	ø12.5	4	127	508
CA-60-B	3	ø5	27	103	2781



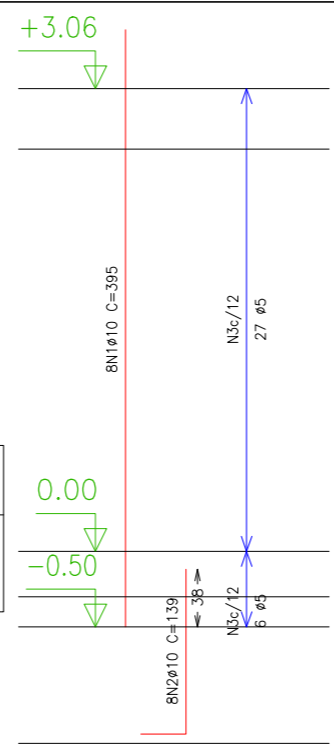
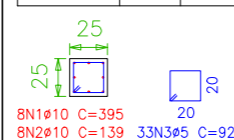
P4

Aço	Pos.	Diam.	Q.	Comp. (cm)	Total (cm)
CA-50-A	1	ø10	8	395	3160
"	2	ø10	8	129	1032
CA-60-B	3	ø5	33	72	2376



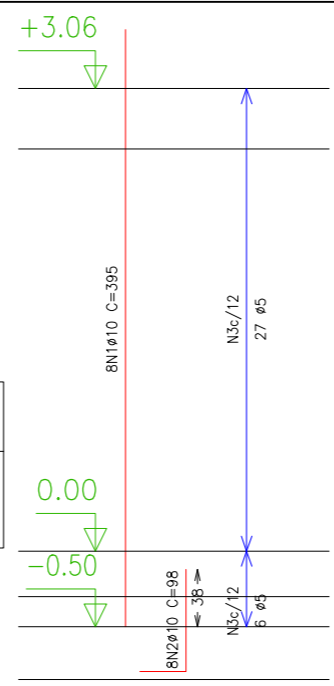
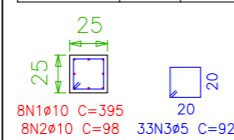
P5

Aço	Pos.	Diam.	Q.	Comp. (cm)	Total (cm)
CA-50-A	1	ø10	8	395	3160
"	2	ø10	8	139	1112
CA-60-B	3	ø5	33	92	3036



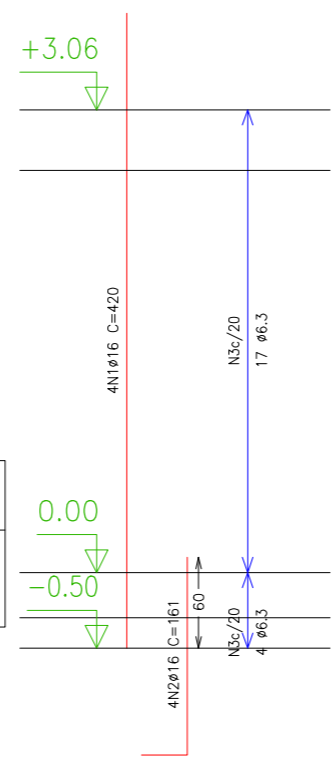
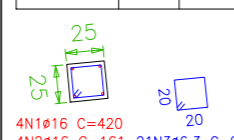
P6

Aço	Pos.	Diam.	Q.	Comp. (cm)	Total (cm)
CA-50-A	1	ø10	8	395	3160
"	2	ø10	8	98	784
CA-60-B	3	ø5	33	92	3036



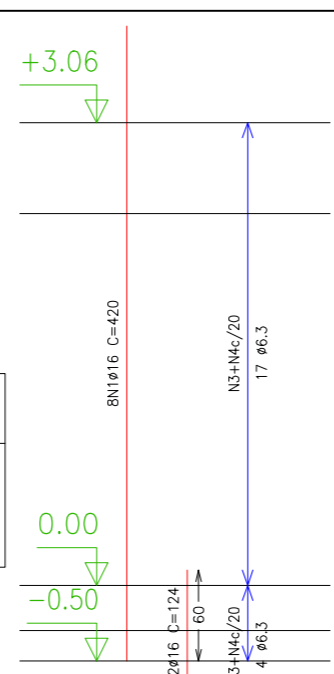
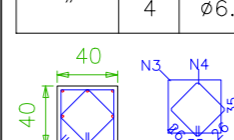
P7

Aço	Pos.	Diam.	Q.	Comp. (cm)	Total (cm)
CA-50-A	1	ø16	4	420	1680
"	2	ø16	4	161	644
"	3	ø6.3	21	93	1953



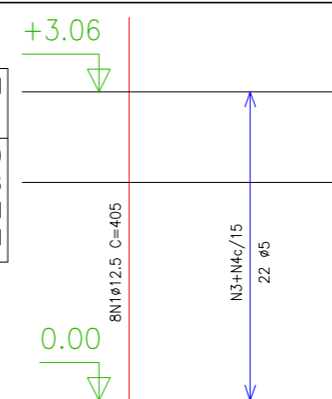
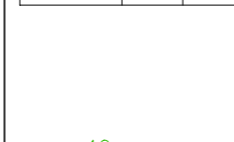
P8

Aço	Pos.	Diam.	Q.	Comp. (cm)	Total (cm)
CA-50-A	1	ø16	8	420	3360
"	2	ø16	8	124	992
"	3	ø6.3	21	153	3213
"	4	ø6.3	21	117	2457



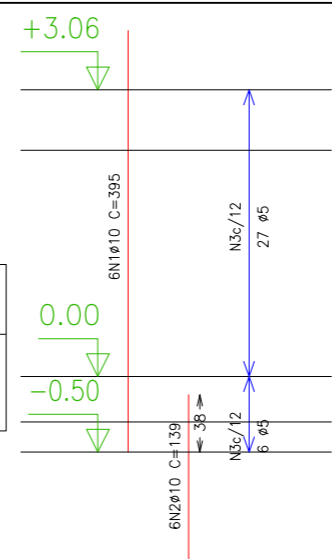
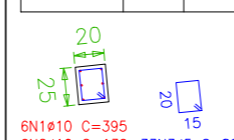
P9

Aço	Pos.	Diam.	Q.	Comp. (cm)	Total (cm)
CA-50-A	1	ø12.5	8	405	3240
"	2	ø12.5	8	111	888
CA-60-B	3	ø5	27	153	4131
"	4	ø5	27	113	3051



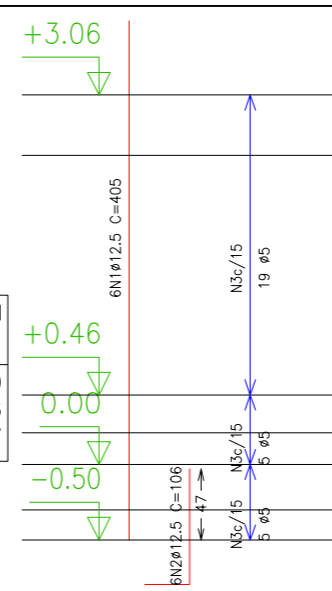
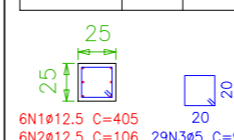
P10

Aço	Pos.	Diam.	Q.	Comp. (cm)	Total (cm)
CA-50-A	1	ø10	6	395	2370
"	2	ø10	6	139	834
CA-60-B	3	ø5	33	82	2706



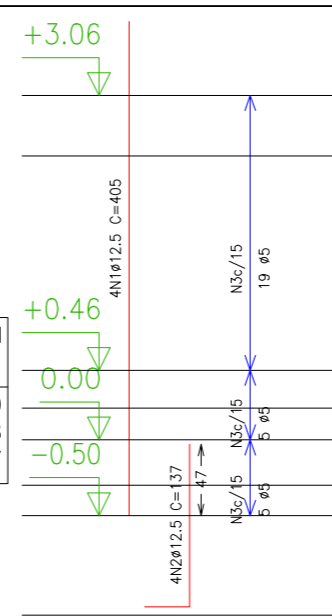
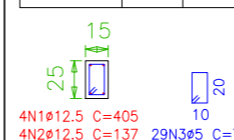
P11

Aço	Pos.	Diam.	Q.	Comp. (cm)	Total (cm)
CA-50-A	1	ø12.5	6	405	2430
"	2	ø12.5	6	106	636
CA-60-B	3	ø5	29	93	2697



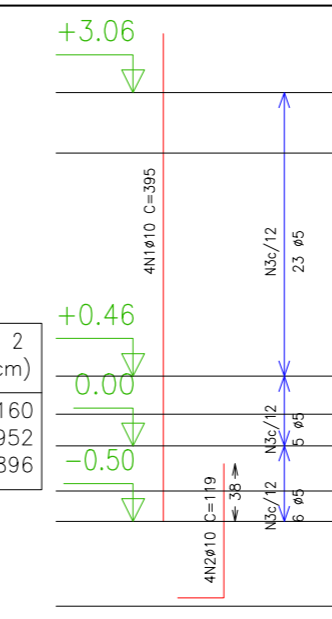
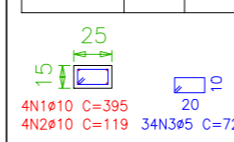
P12

Aço	Pos.	Diam.	Q.	Comp. (cm)	Total (cm)
CA-50-A	1	ø12.5	4	405	1620
"	2	ø12.5	4	137	548
CA-60-B	3	ø5	29	73	2117



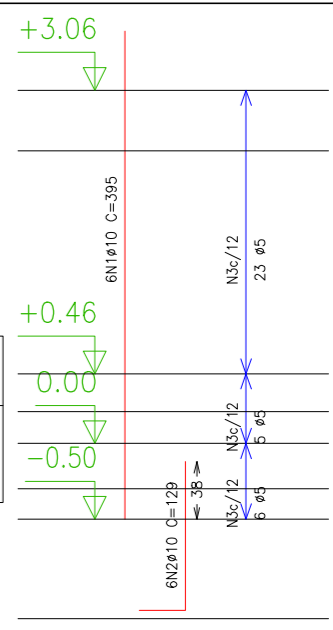
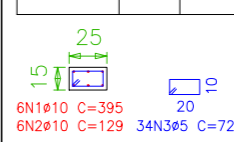
P13=P15

Aço	Pos.	Diam.	Q.	Comp. (cm)	Total (cm)	x 2 (cm)
CA-50-A	1	ø10	4	395	1580	3160
"	2	ø10	4	119	476	952
CA-60-B	3	ø5	34	72	2448	4896



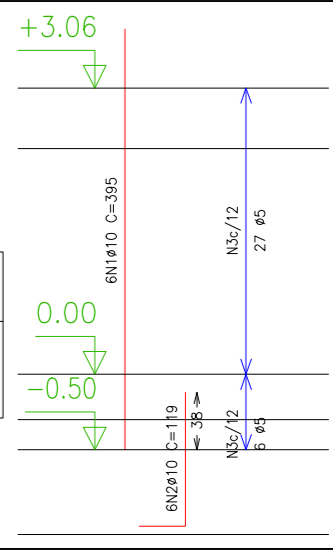
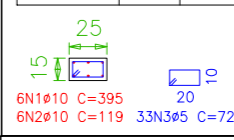
P14

Aço	Pos.	Diam.	Q.	Comp. (cm)	Total (cm)
CA-50-A	1	ø10	6	395	2370
"	2	ø10	6	129	774
CA-60-B	3	ø5	34	72	2448



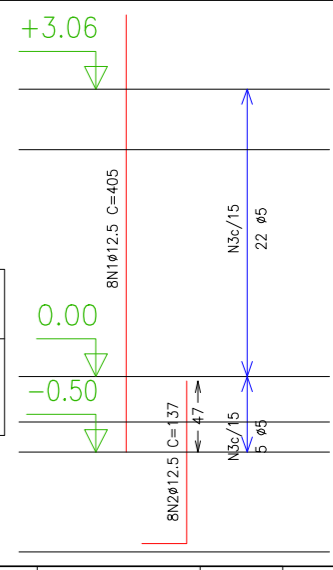
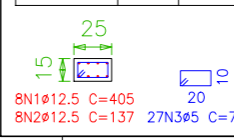
P16

Aço	Pos.	Diam.	Q.	Comp. (cm)	Total (cm)
CA-50-A	1	ø10	6	395	2370
"	2	ø10	6	119	714
CA-60-B	3	ø5	33	72	2376



P17

Aço	Pos.	Diam.	Q.	Comp. (cm)	Total (cm)
CA-50-A	1	ø12.5	8	405	3240
"	2	ø12.5	8	137	1096
CA-60-B	3	ø5	27	73	1971



Resumo Aço Primeiro Pilares	Comp. total (m)	Peso+10% (kg)	Total
CA-50-A ø6.3	76.2	21	
ø10	294.3	203	
ø12.5	158.3	171	
CA-60-B ø5	66.8	115	510
Total	425.8	74	74
			584