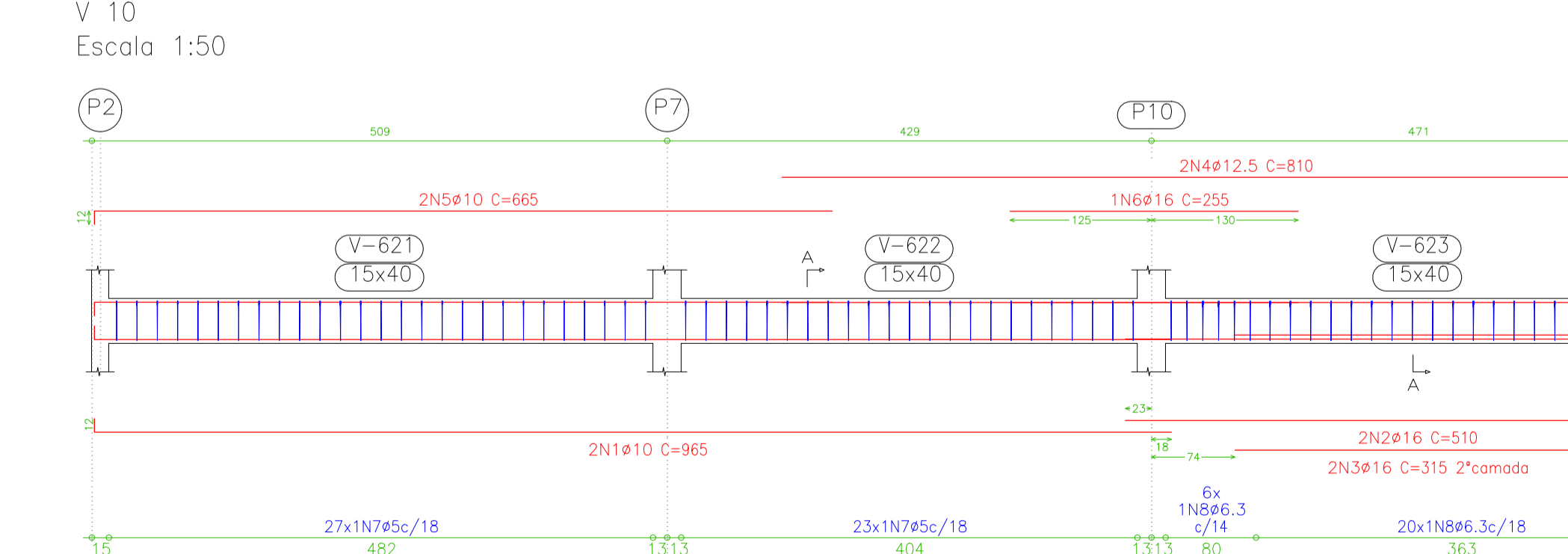
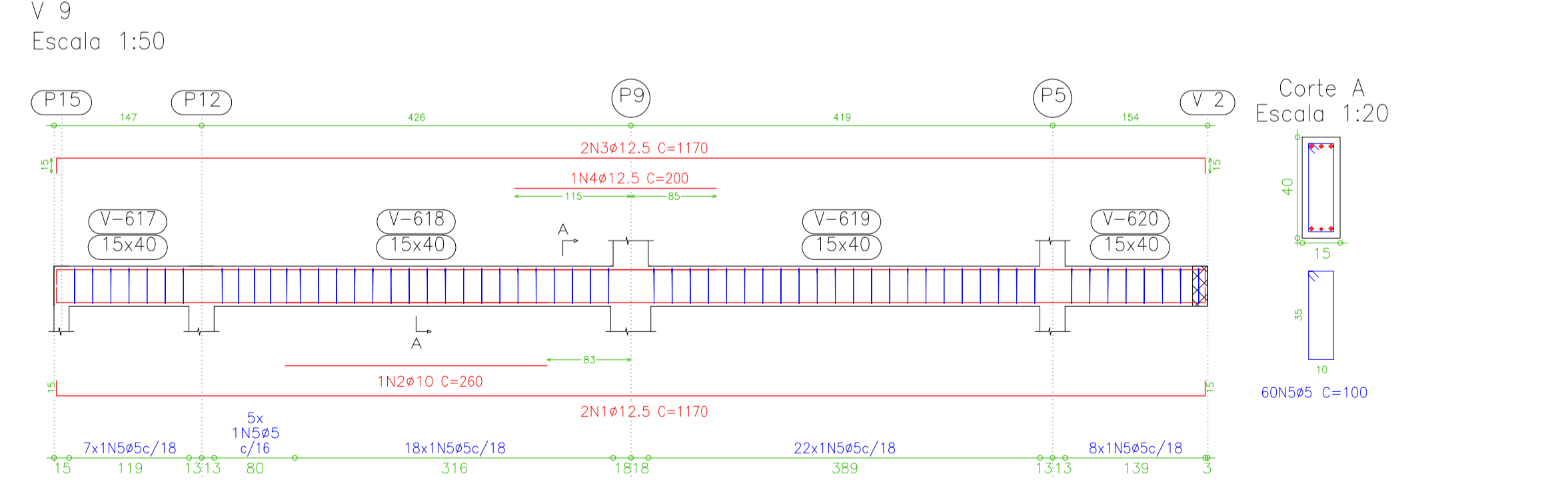
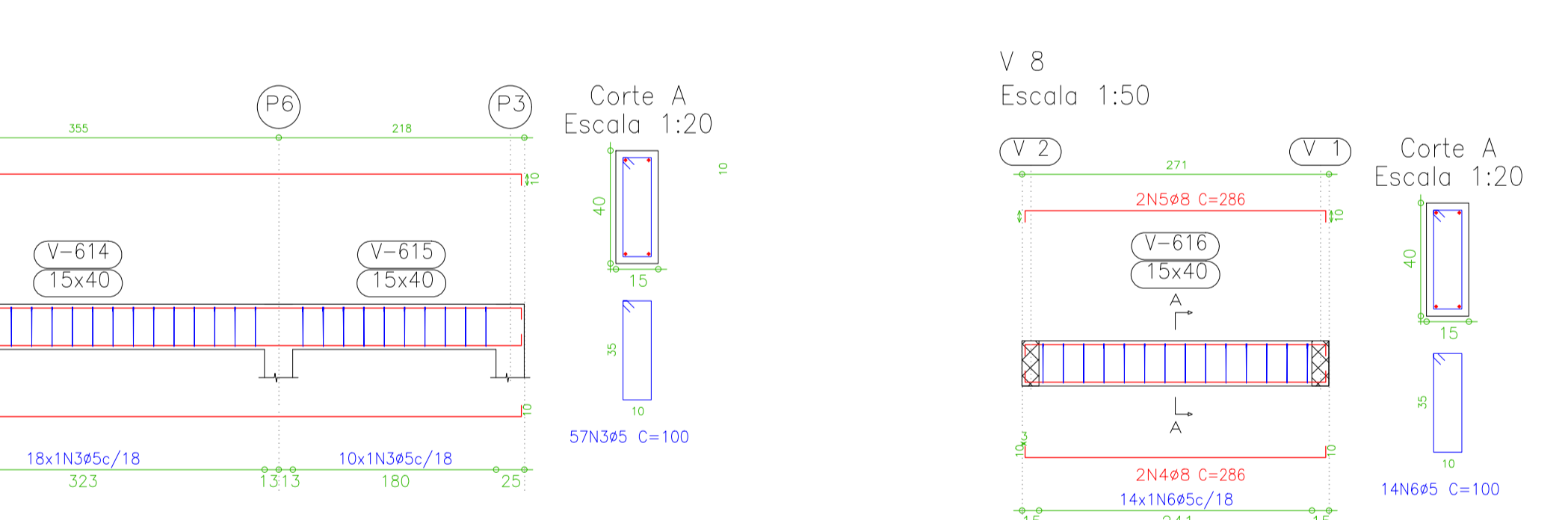
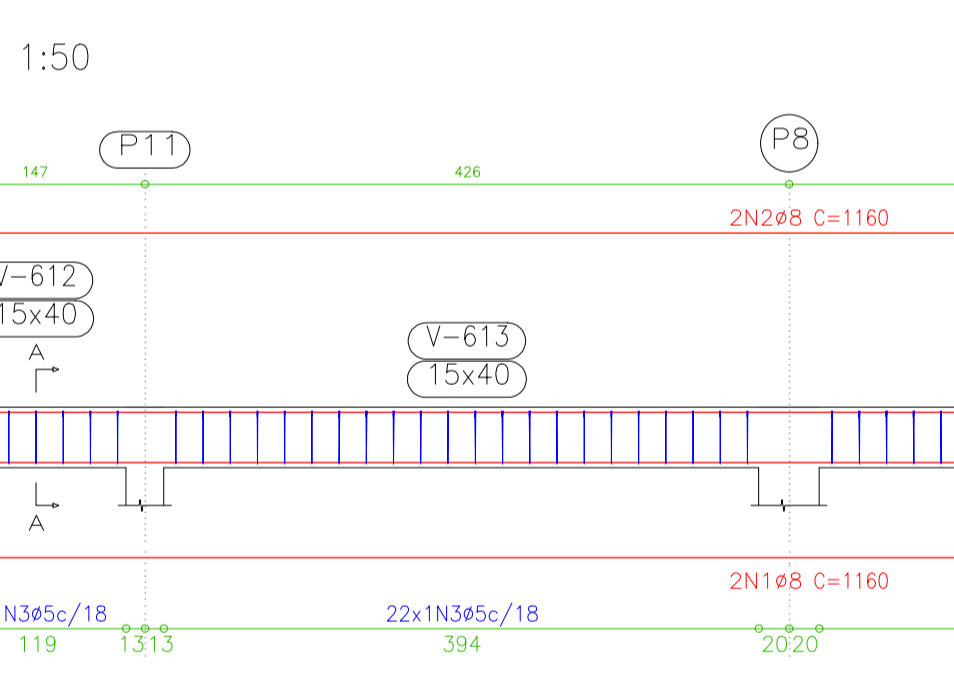
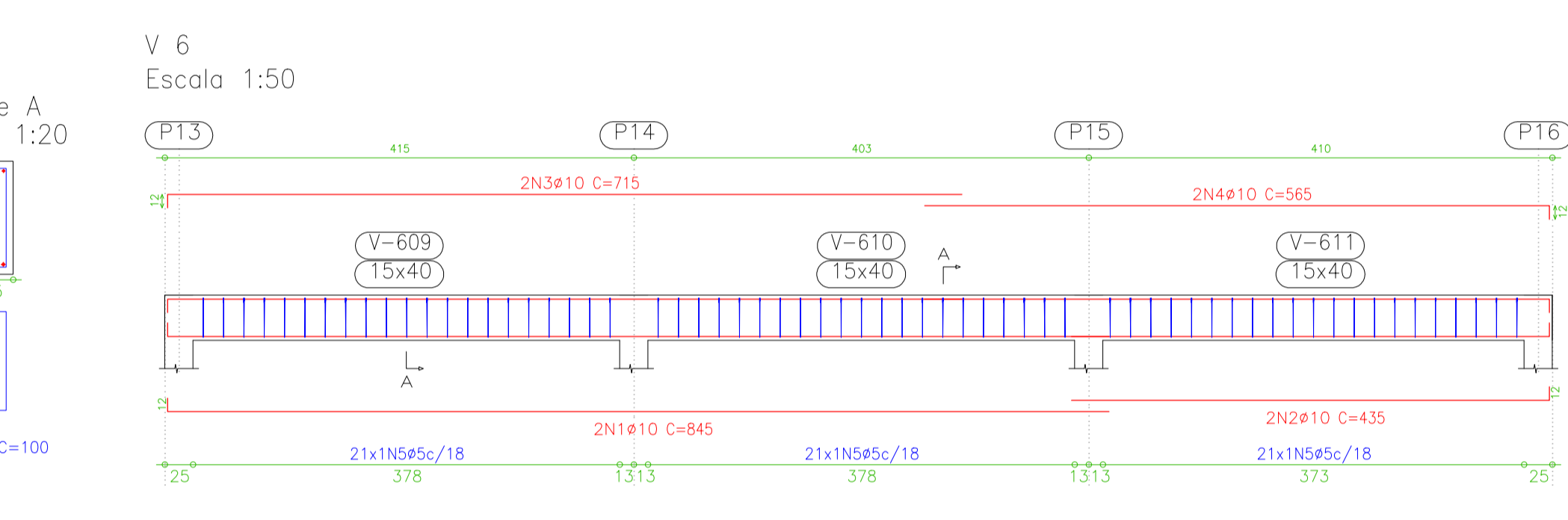
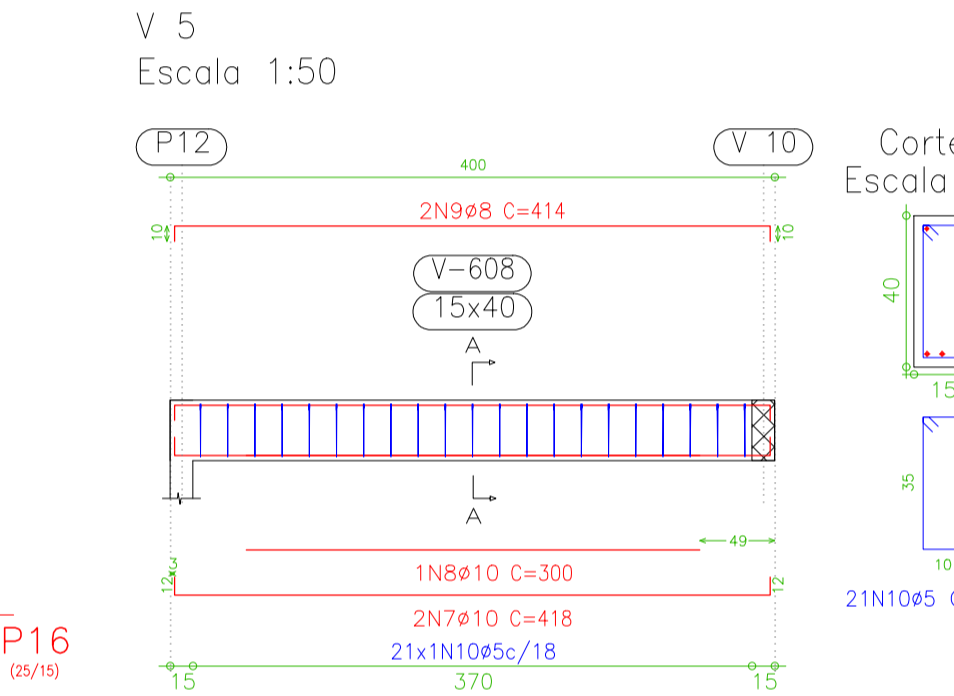
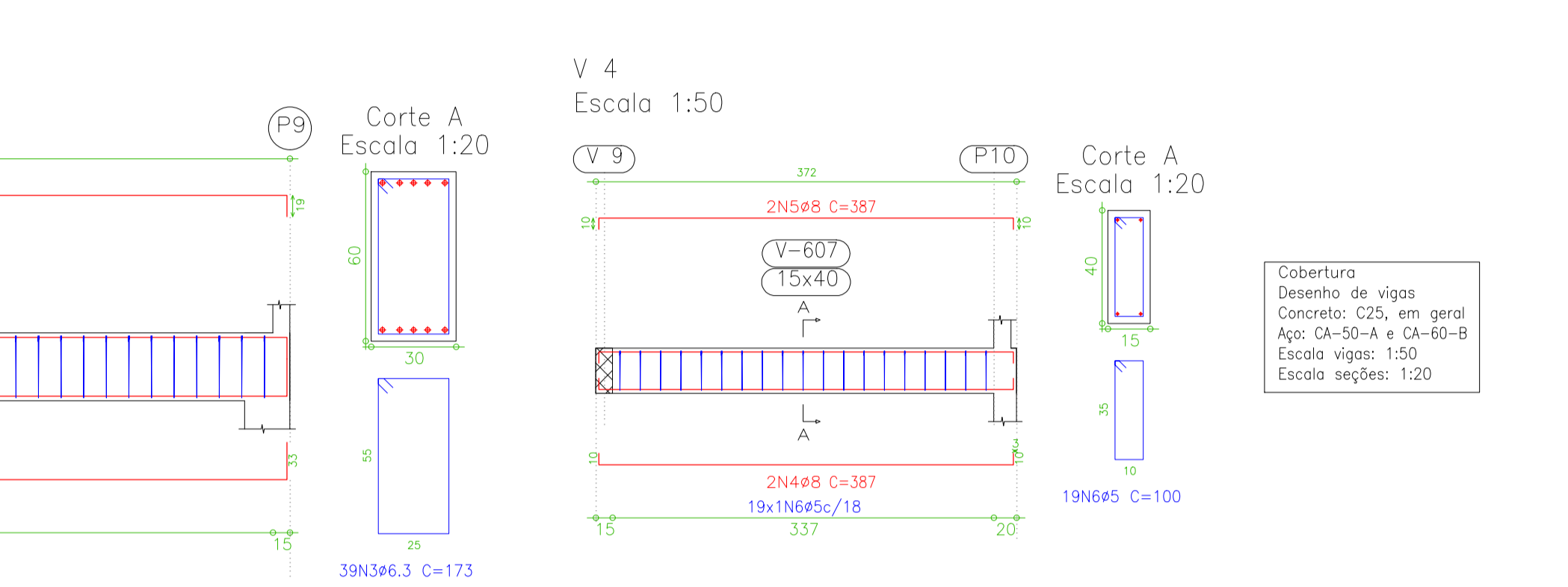
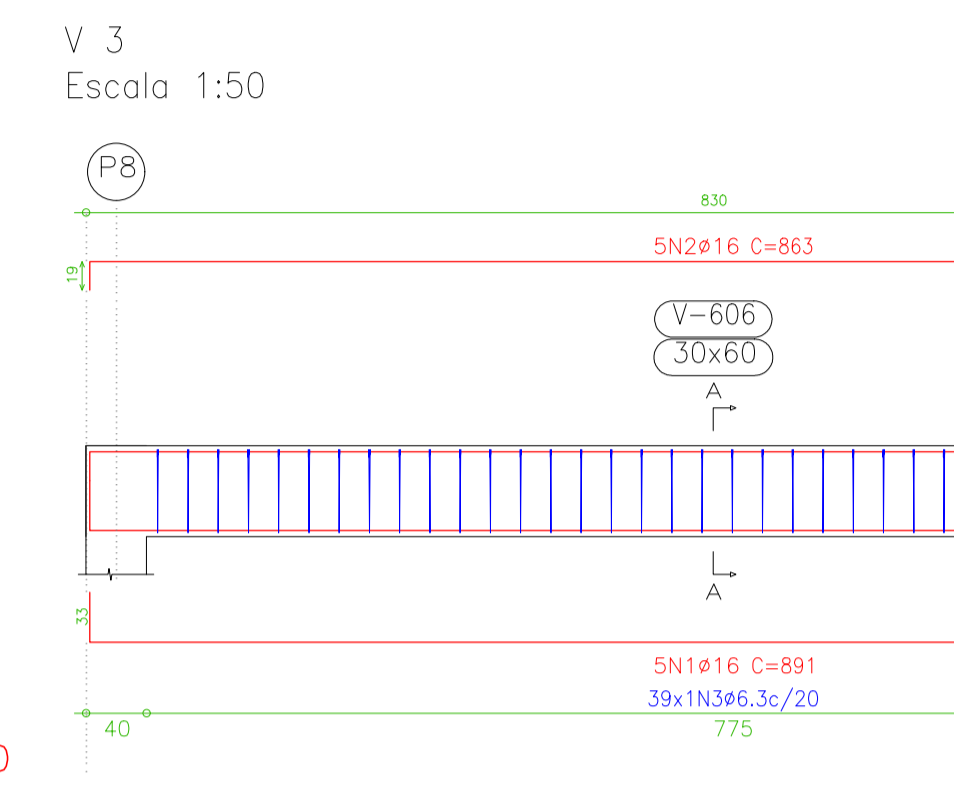
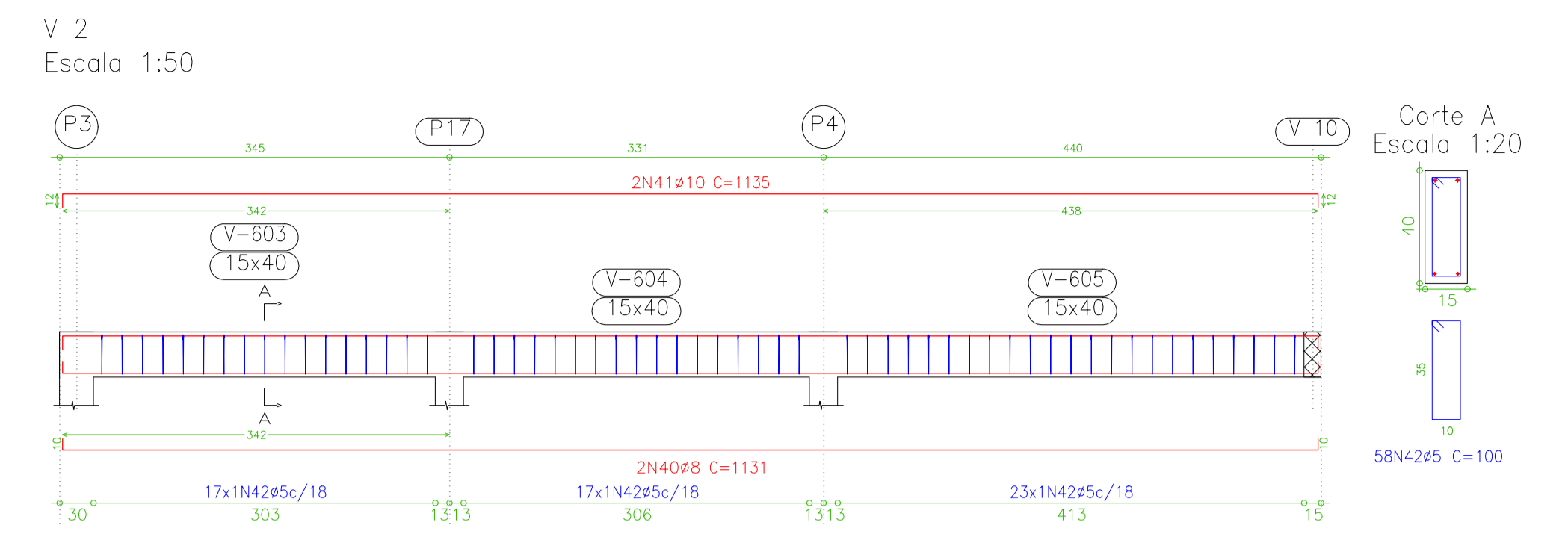
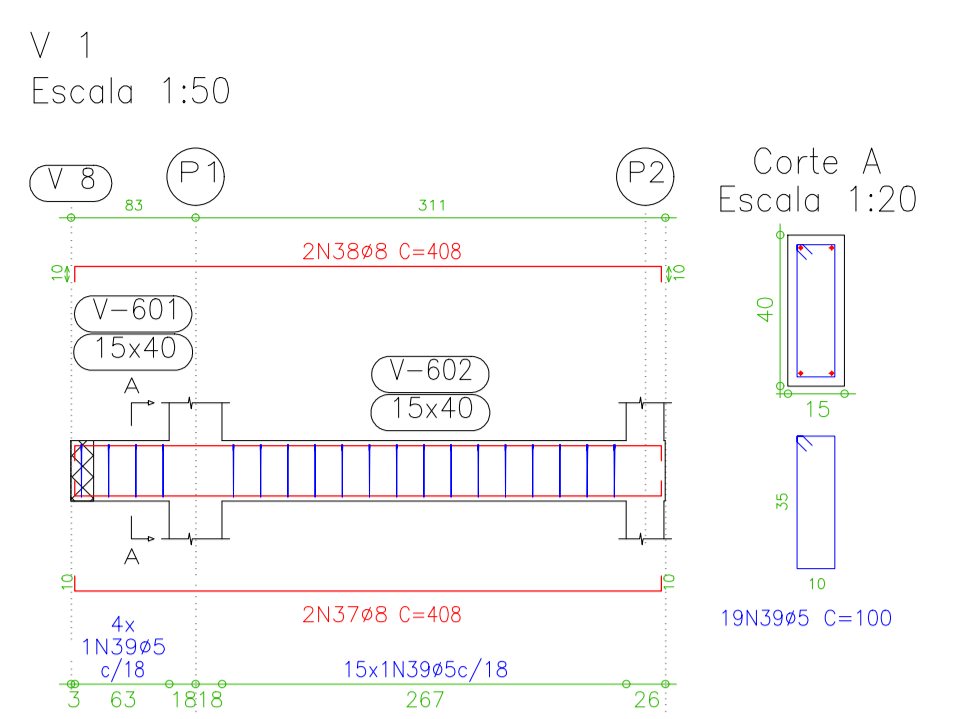
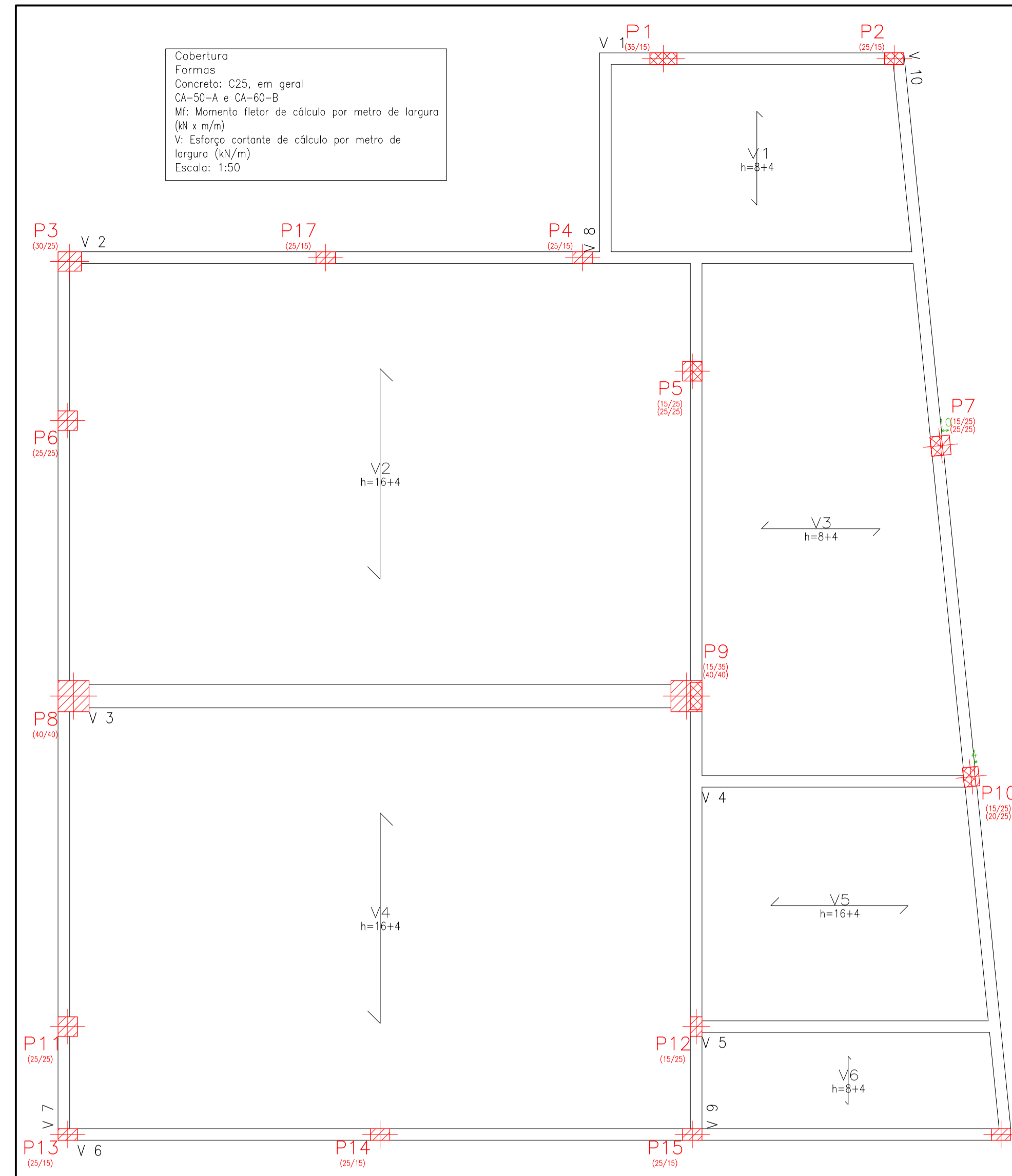


Cobertura
Formas
Concreto: C25, em geral
CA-50-A e CA-60-B
M: Momento fletor de cálculo por metro de largura (kN x m/m)
V: Esforço cortante de cálculo por metro de largura (kN/m)
Escala: 1:50

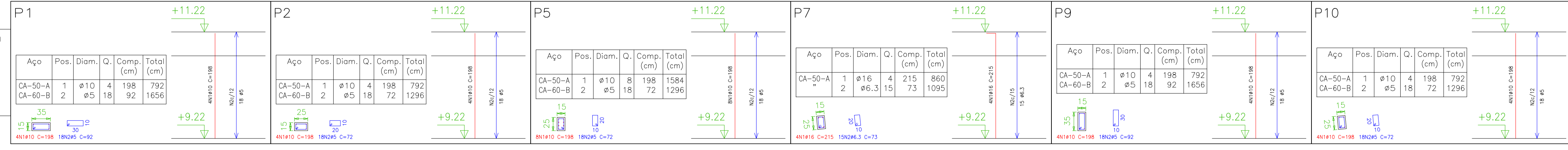


Elemento	Pos.	Diam.	Q.	Comp. (cm)	Total (cm)	CA-50-A (kg)	CA-60-B (kg)
V 1	37	ø8	2	10	388	10	408
	38	ø8	2	10	388	10	408
	39	ø5	19		100		1900
						7.0	3.0
V 2	40	ø8	2	10	1111	12	1131
	41	ø10	5	12	1111	12	1135
	42	ø5	57		100		5700
						25.5	9.8
V 3	1	ø16	5	33	825	33	891
	2	ø16	5	33	825	33	891
	3	ø6.3	39		100		6747
						169.7	3.0
V 4	4	ø8	2	10	367	10	387
	5	ø8	2	10	367	10	387
	6	ø5	19		100		1900
						6.6	3.3
V 5	7	ø10	2	12	394	12	418
	8	ø10	2	12	394	12	418
	9	ø8	2	10	300	10	300
	10	ø5	21		100		2100
						11.4	3.6
V 6	1	ø10	2	12	833	12	845
	2	ø10	2	12	423	12	435
	3	ø10	2	12	703	12	715
	4	ø10	2	12	553	12	565
	5	ø5	63		100		6300
						35.4	10.9
V 7	1	ø8	2	10	1140	10	1160
	2	ø8	2	10	1140	10	1160
	3	ø5	57		100		5700
						20.0	9.8
V 8	4	ø8	2	10	266	10	286
	5	ø8	2	10	266	10	286
	6	ø5	14		100		1400
						4.8	2.4
V 9	1	ø12.5	2	15	1140	15	1170
	2	ø10	1	1	260	1	260
	3	ø12.5	2	15	1140	15	1170
	4	ø12.5	1	1	200	1	200
	5	ø5	60		100		6000
						54.6	10.3
V 10	1	ø10	2	12	953	12	965
	2	ø16	2	19	491	19	510
	3	ø16	2	19	491	19	510
	4	ø12.5	2	15	795	15	810
	5	ø10	2	12	653	12	665
	6	ø16	1	1	255	1	255
	7	ø5	50		100		5000
	8	ø6.3	26		103		2678
						80.2	8.7

Resumo Aço	Comp. total (m)	Peso+10% (kg)	Total
CA-50-A ø6.3	94.3	26	
ø8	120.5	52	
ø10	120.5	83	
ø12.5	65.0	70	
ø16	106.8	184	415
CA-60-B ø5	360.0	62	62
Total			477

Elemento	Formas (m2)	Volume (m3)	Barra (kg)
LAJES	131.17	12.79	168
Vigas: fundo	12.45	5.93	477
Forma lateral	45.66		
Pilares (Sup. Formas)	45.00	2.79	332
Total	234.28	21.51	977
Índices (por m2)	1.619	0.149	6.75

Pilares que terminam em Caixa
Concreto: C25, em geral
Aço: CA-50-A e CA-60-B
Escala: 1:50



Resumo Aço	Comp. total (m)	Peso+10% (kg)	Total
CA-50-A ø6.3	11.0	3	
ø10	47.5	33	
ø16	8.6	15	5.1
CA-60-B ø5	72.0	12	12
Total			63