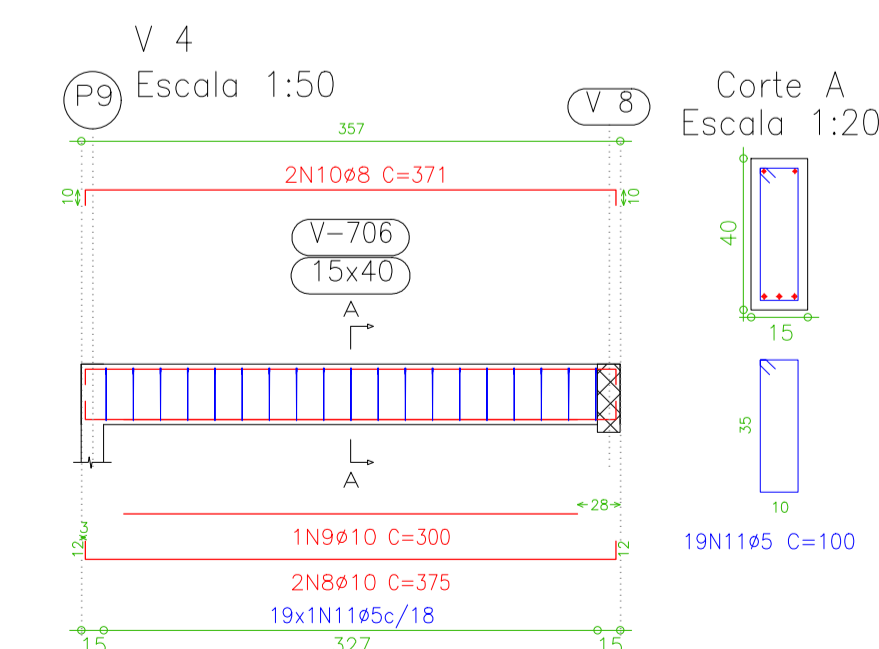
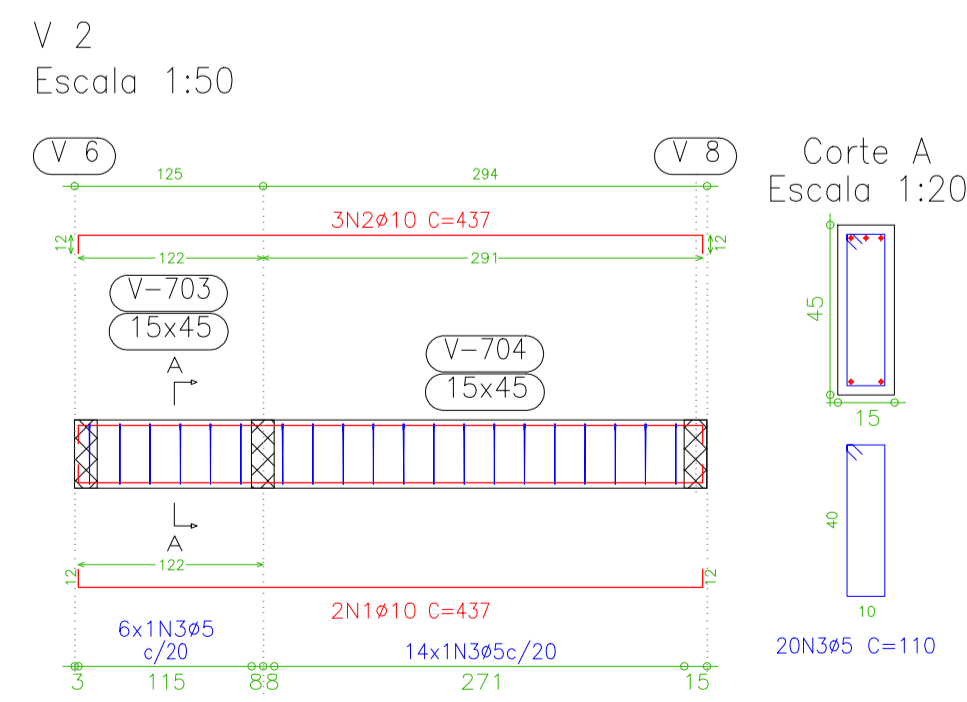
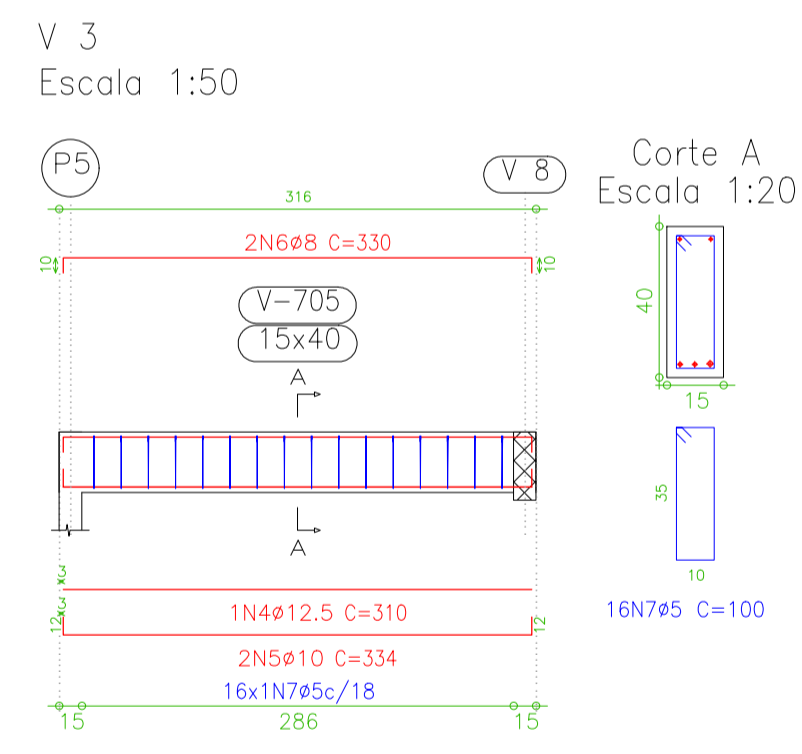
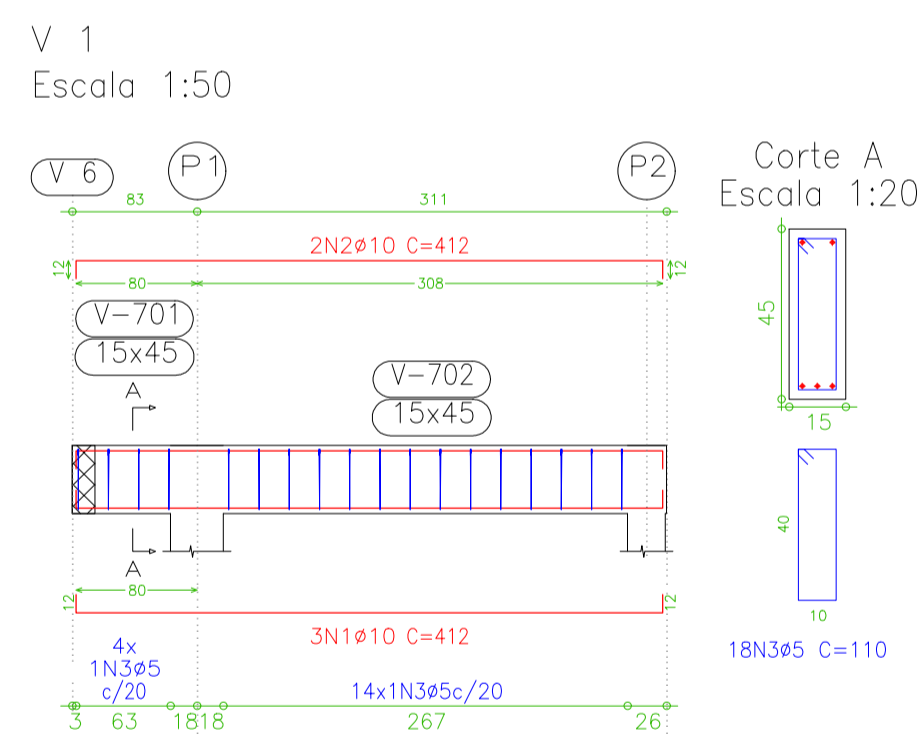


Caixa Desenho de vigas Concreto: C25, em geral Aço: CA-50-A e CA-60-B Escala vigas: 1:50 Escala seções: 1:20



Elemento	Pos.	Diam.	Q.	Dob.	Reta	Dob.	Comp.	Total	CA-50-A	CA-60-B	
				(cm)	(cm)	(cm)	(cm)	(cm)	(kg)	(kg)	
V 1	1	ø10	3	12	388	12	412	1236	7.8		
	2	ø10	2	12	388	12	412	824	5.2		
	3	ø5	18				110	1980		3.1	
Total+10%									14.3	3.4	
V 2	1	ø10	2	12	413	12	437	874	5.5		
	2	ø10	3	12	413	12	437	1311	8.2		
	3	ø5	20				110	2200		3.5	
Total+10%									15.1	3.9	
V 3	4	ø12.5	1	12	310	12	310	310	3.0		
	5	ø10	2	12	310	12	334	668	4.2		
	6	ø8	2	10	310	10	330	660	2.6		
	7	ø5	16				100	1600		2.5	
	Total+10%									10.8	2.8
	V 4	8	ø10	2	12	351	12	375	750	4.7	
		9	ø10	1	10	300	10	300	300	1.9	
10		ø8	2	10	351	10	371	742	2.9		
V 5	11	ø5	19				100	1900		3.0	
	Total+10%									10.5	3.3
	V 6	12	ø12.5	2	15	362	15	392	784	7.7	
13		ø8	2	10	266	10	382	764	3.0		
14		ø5	17				110	1870		2.9	
Total+10%									11.8	3.2	
V 7	15	ø8	2	10	266	10	286	572	2.2		
	16	ø8	1	10	266	10	266	266	1.0		
	17	ø8	2	10	266	10	286	572	2.2		
	18	ø5	13				110	1430		2.2	
	Total+10%									5.9	2.4
V 8	1	ø16	2	19	941	19	979	1958	30.7		
	2	ø12.5	1	19	420	19	420	420	4.1		
	3	ø16	2	19	941	19	979	1958	30.7		
	4	ø12.5	1	215	215	215	215	215	2.1		
	5	ø5	27				110	2970		4.7	
Total+10%									82.6	5.2	
V 8	1	ø12.5	2	15	945	15	975	1950	19.1		
	2	ø12.5	1	15	945	15	945	945	9.3		
	3	ø20	2	26	945	26	997	1994	49.3		
	4	ø6.3	29				113	3277	8.1		
	5	ø8	27				116	3132	12.3		
Total+10%									107.9		

Resumo Aço Caixa Vigas	Comp. total (m)	Peso+10% (kg)	Total
CA-50-A ø6.3	63.3	17	
ø8	67.1	29	
ø10	59.6	4.1	
ø12.5	46.2	5.0	
ø16	39.2	6.8	
ø20	19.9	5.4	259
CA-60-B ø5	139.5	24	24
Total			283

Caixa - Superfície total: 33,62 m2		
Elemento	Formas (m2)	Volume (m3) Barros (kg)
LAIJES	27,86	5,57 312
Vigas: fundo	5,50	2,55 283
Forma lateral	22,72	
Pilares (Sup. Formas)	8,00	0,40 63
Total	64,08	8,52 658
Índices (por m2)	1,906	0,253 19,57

