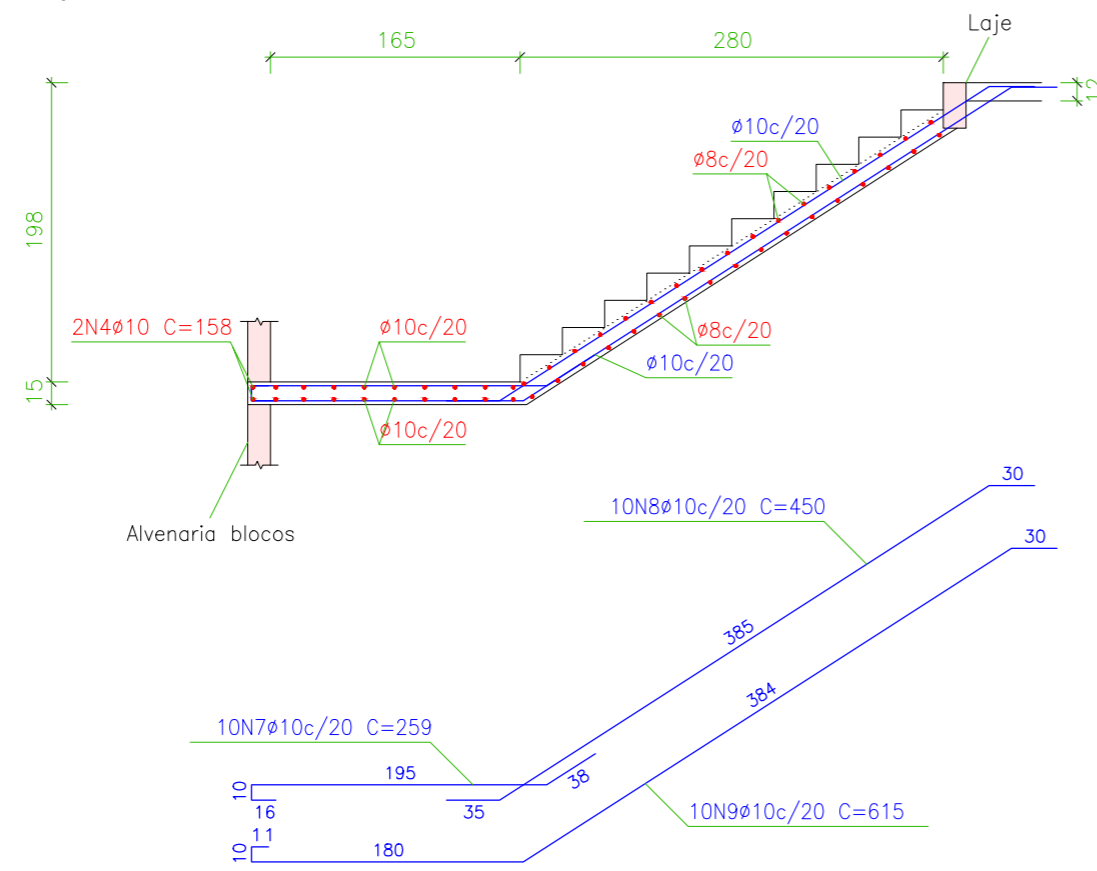


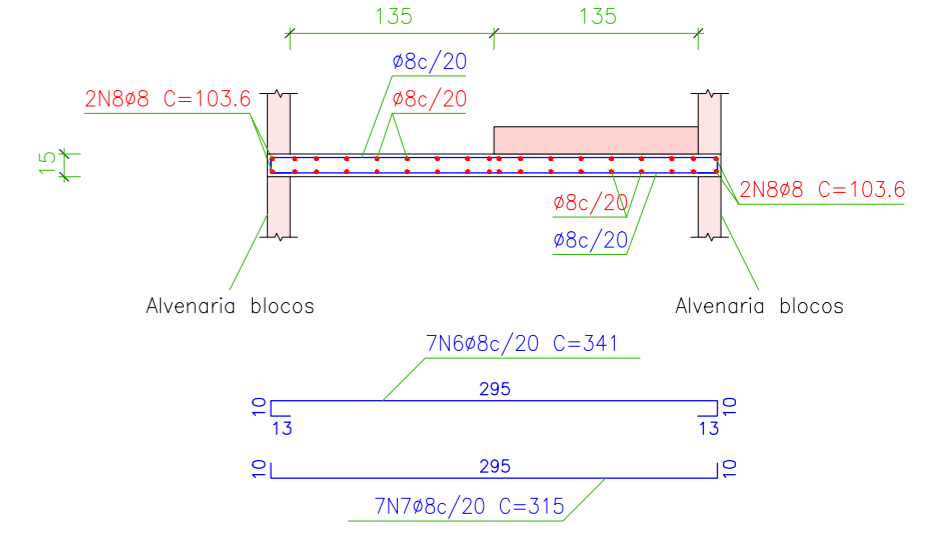
Tramo 1	
Geometria	
Largura	1.650 m
Espessura	0.15 m
Piso	0.280 m
Espelho	0.180 m
Desnível que vence	3.06 m
N° de degraus	17
Piso final	Primeiro
Piso inicial	Térreo
Cargas	
Peso próprio	3.68 kN/m ²
Degraus (Concretado com a laje)	1.86 kN/m ²
Revestimento	1.00 kN/m ²
Guarda-corpos	3.00 kN/m
Sobrecarga	3.00 kN/m ²
Materiais	
Concreto	C25, em geral
Aço	CA-50-A e CA-60-B
Cob. geométrico	2.0 cm

Seção B-B

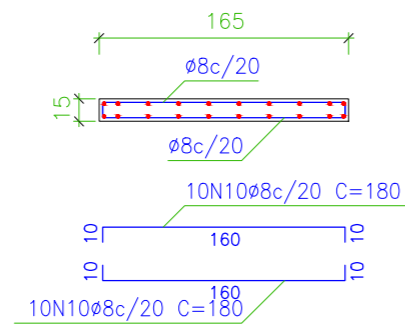


Tramo 1	
Geometria	
Largura	1.350 m
Espessura	0.15 m
Piso	0.300 m
Espelho	0.180 m
Desnível que vence	3.06 m
N° de degraus	17
Piso final	Segundo
Piso inicial	Primeiro
Cargas	
Peso próprio	3.68 kN/m ²
Degraus (Concretado com a laje)	1.89 kN/m ²
Revestimento	1.00 kN/m ²
Guarda-corpos	3.00 kN/m
Sobrecarga	3.00 kN/m ²
Materiais	
Concreto	C25, em geral
Aço	CA-50-A e CA-60-B
Cob. geométrico	2.0 cm

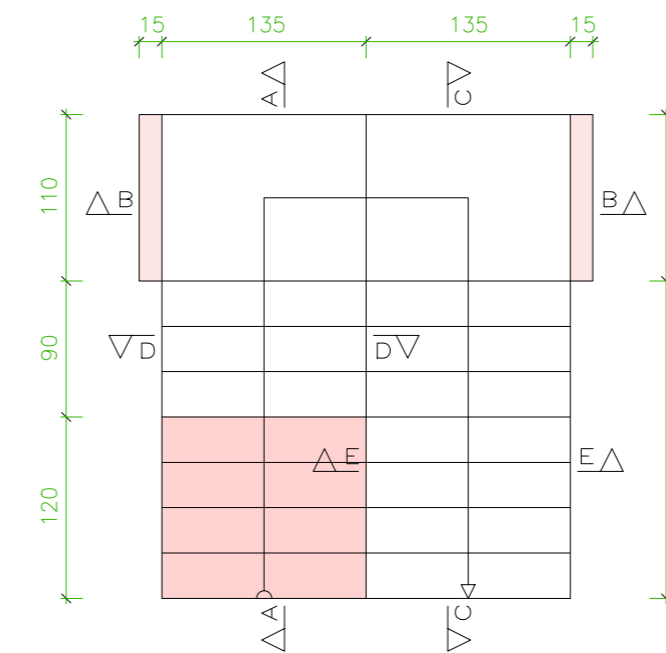
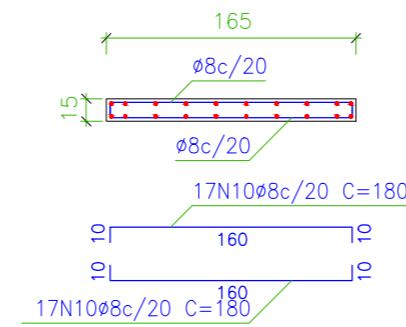
Seção B-B



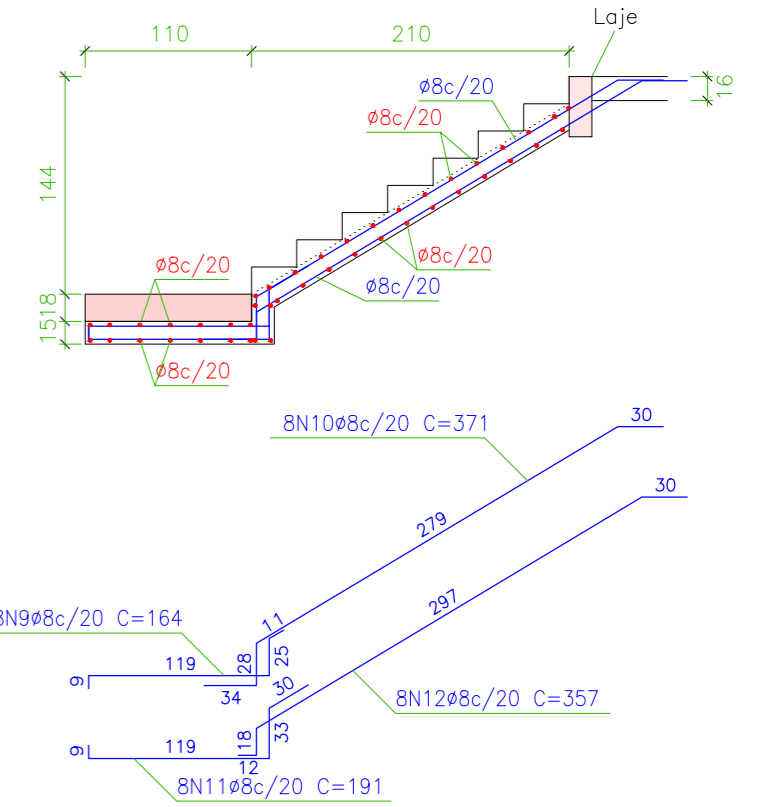
Seção C-C



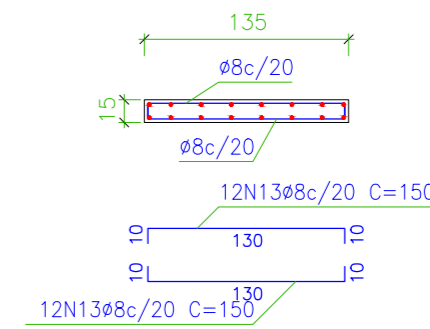
Seção D-D



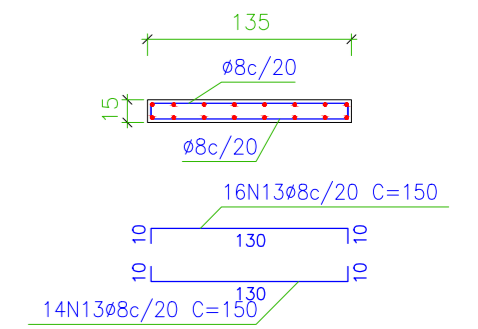
Seção C-C



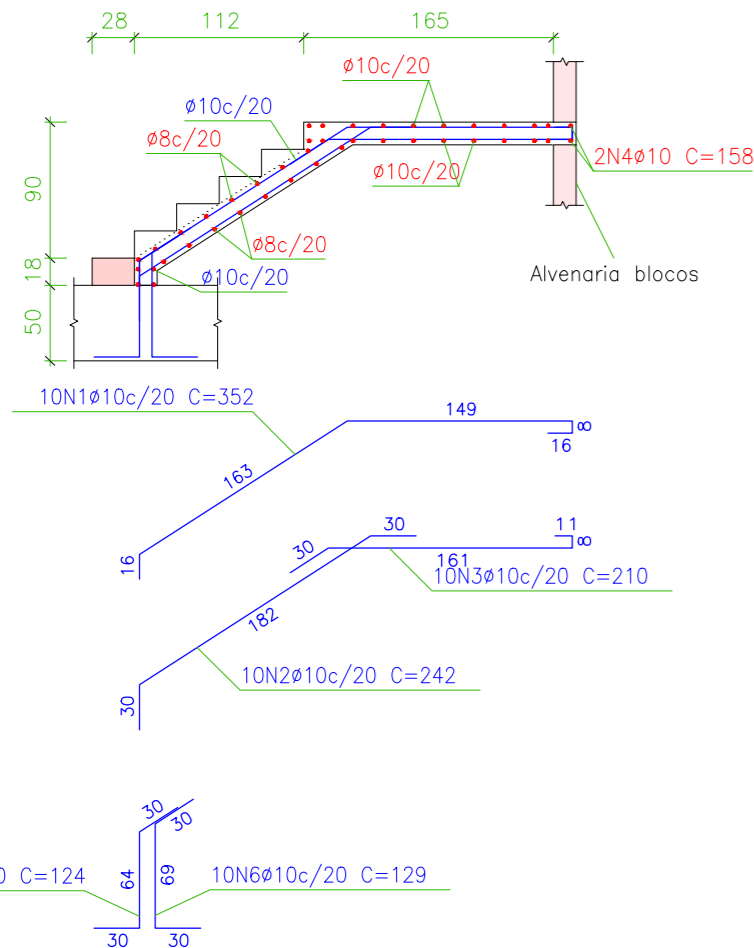
Seção D-D



Seção E-E

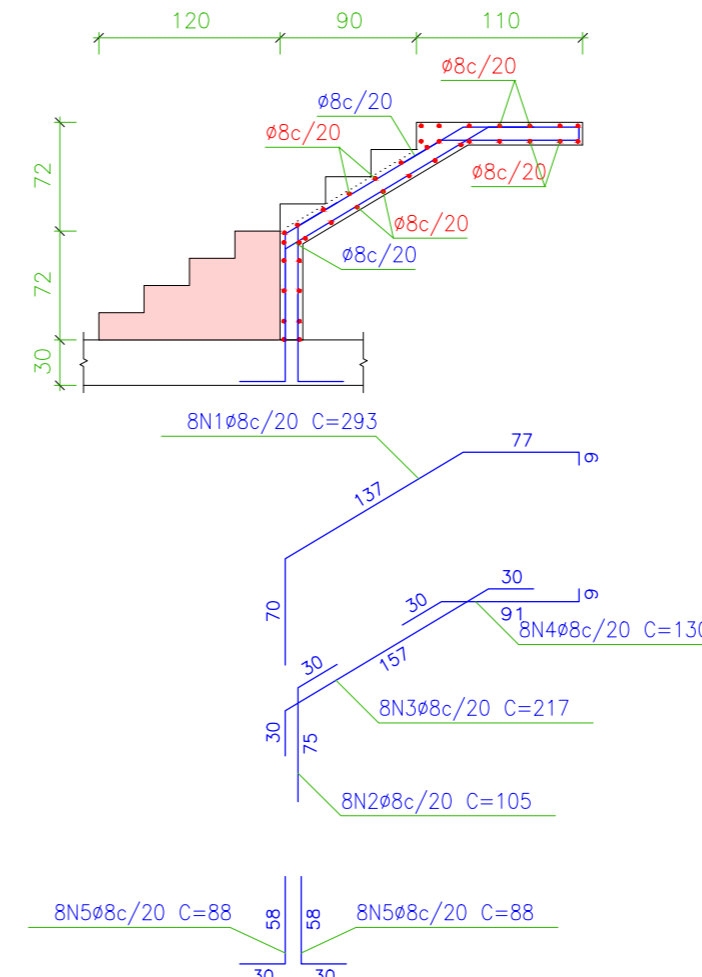


Seção A-A



Elemento	Pos.	Diam.	Q.	Dob. (cm)	Reta (cm)	Dob. (cm)	Comp. (cm)	Total (cm)	CA-50-A (kg)	CA-60-B (kg)
Térreo-Tramo 1	1	Ø10	10	352	352	352	3520	22.1		
	2	Ø10	10	242	242	242	2420	15.2		
	3	Ø10	10	210	210	210	2100	13.2		
	4	Ø10	4	158	158	158	632	4.0		
	5	Ø10	10	124	124	124	1240	7.8		
	6	Ø10	10	129	129	129	1290	8.1		
	7	Ø10	10	259	259	259	2590	16.3		
	8	Ø10	10	450	450	450	4500	28.3		
	9	Ø10	10	615	615	615	6150	38.6		
	10	Ø8	54	180	180	180	9720	38.2		
							Total+10%:	211.0		
							Ø8:	42.0	0.0	
							Ø10:	169.0	0.0	
							Total:	211.0	0.0	

Seção A-A



Elemento	Pos.	Diam.	Q.	Dob. (cm)	Reta (cm)	Dob. (cm)	Comp. (cm)	Total (cm)	CA-50-A (kg)	CA-60-B (kg)
Primeiro-Tramo 1	1	Ø8	8	293	293	293	2344	9.2		
	2	Ø8	8	105	105	105	840	3.3		
	3	Ø8	8	217	217	217	1736	6.8		
	4	Ø8	8	130	130	130	1040	4.1		
	5	Ø8	16	88	88	88	1408	5.5		
	6	Ø8	7	341	341	341	2387	9.4		
	7	Ø8	7	315	315	315	2205	8.7		
	8	Ø8	4	104	104	104	416	1.6		
	9	Ø8	8	164	164	164	1312	5.1		
	10	Ø8	8	371	371	371	2968	11.6		
	11	Ø8	8	191	191	191	1528	6.0		
	12	Ø8	8	357	357	357	2856	11.2		
	13	Ø8	54	150	150	150	8100	31.8		
							Total+10%:	125.7		
							Ø8:	125.7	0.0	
							Total:	125.7	0.0	