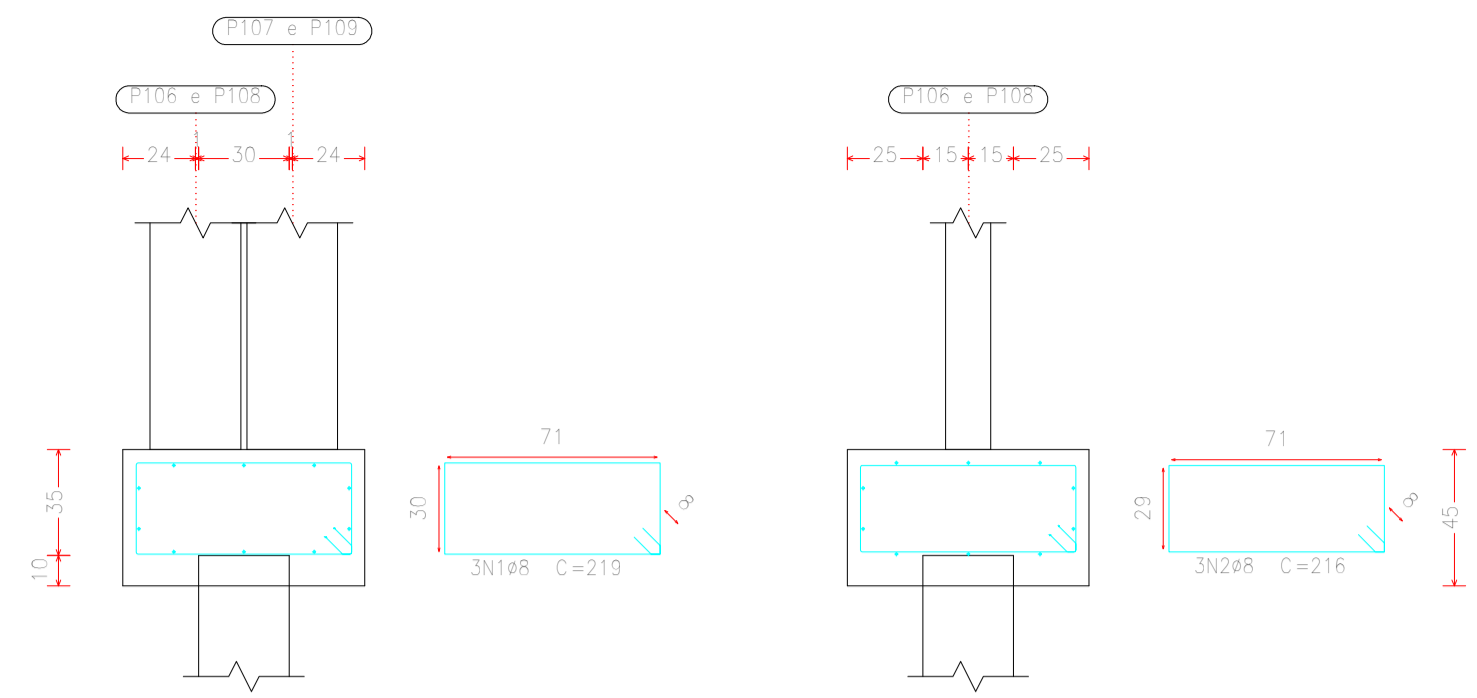
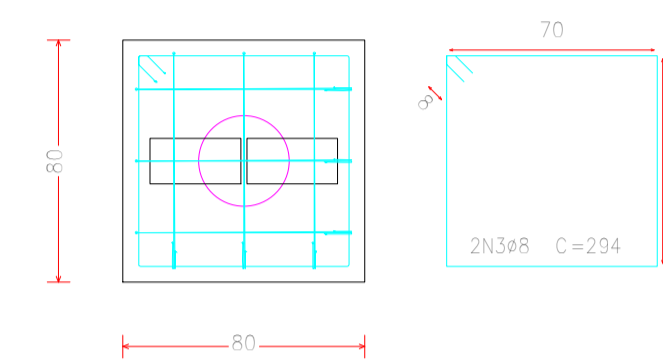


(P106-P107) e (P108-P109)

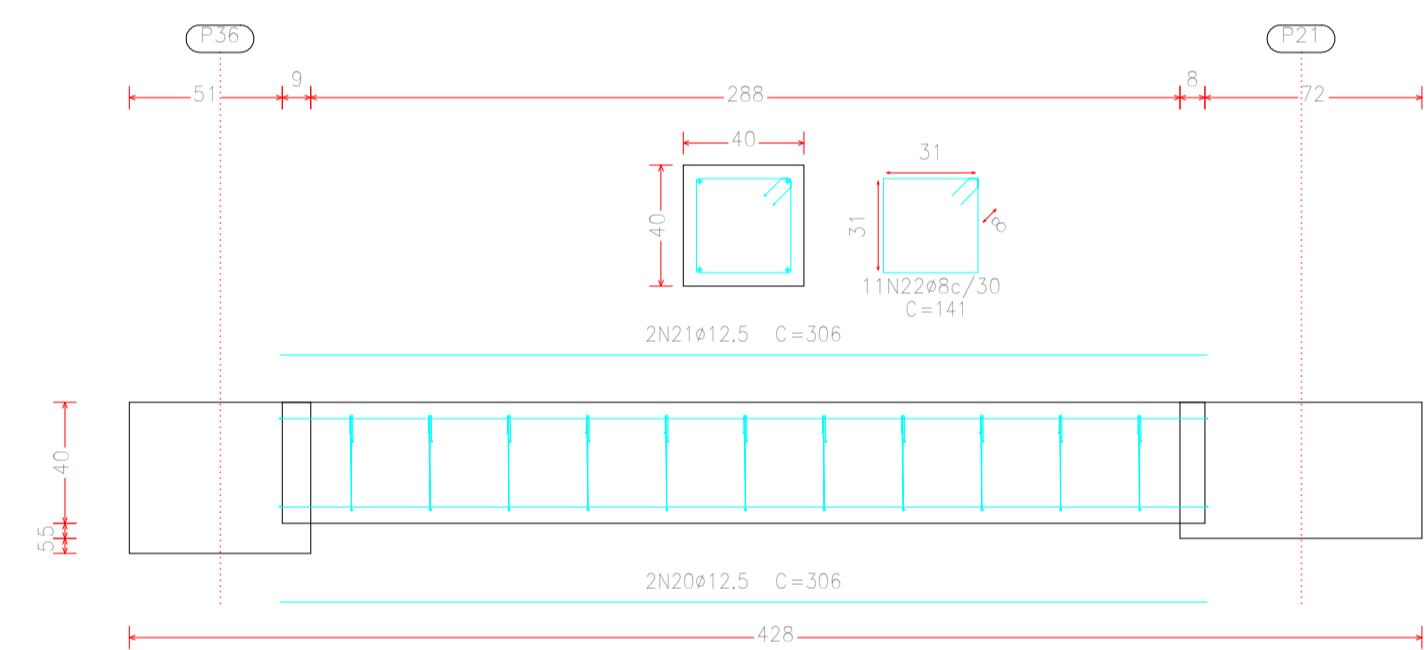


Estacas: e30

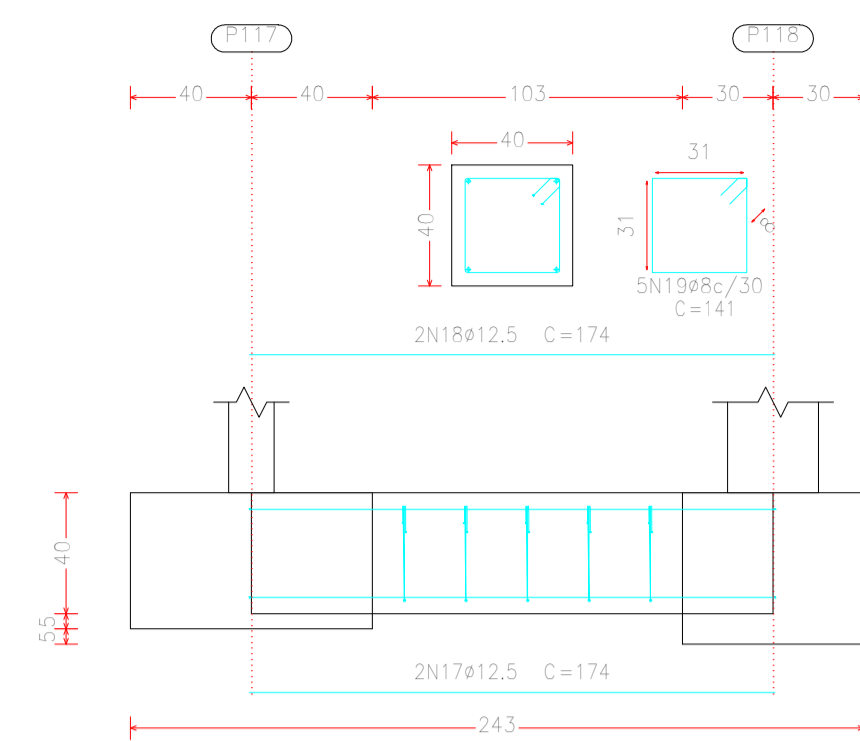


Resumo Aço Fundação	Comp. total (m)	Peso+10% (kg)	Total
CA-50 ø6,3	21,0	6	2025
ø8	1816,1	789	
ø10	1268,5	860	
ø12,5	349,3	370	
CA-60 ø4,2	41,9	5	218
ø5	1235,8	213	
Total			2243

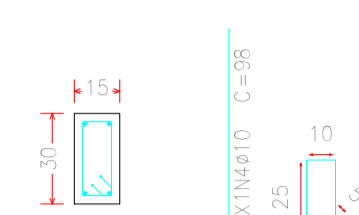
C.1 [P36 - P21]



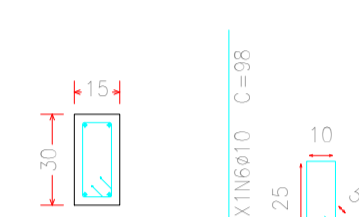
C.1 [P117 - P118]



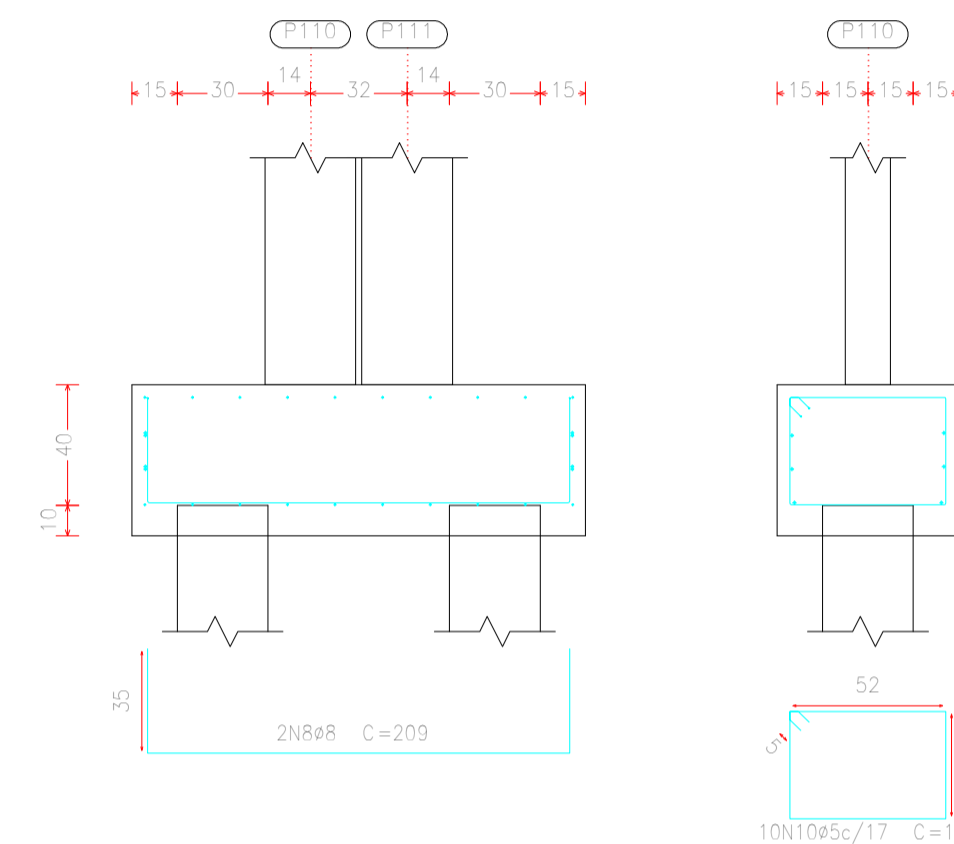
P106 e P108



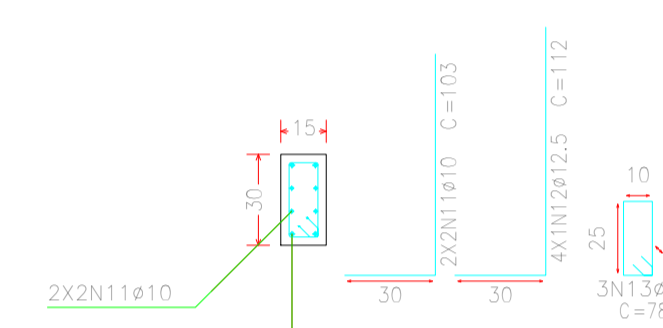
P107 e P109



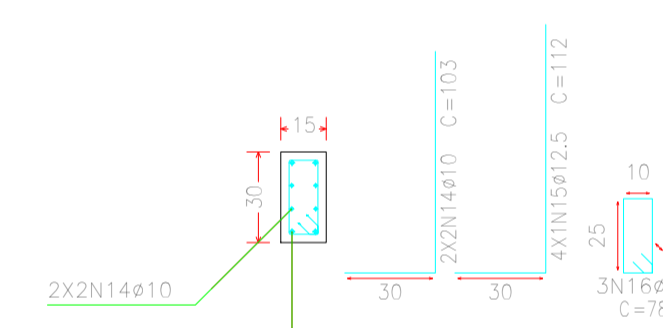
(P110-P111)



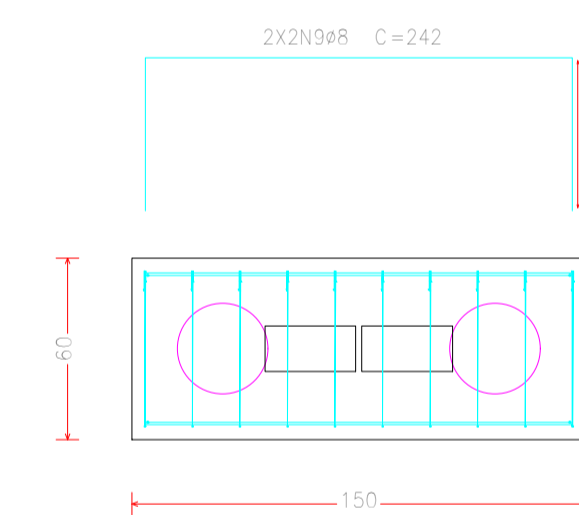
P110



P111



Estacas: e30

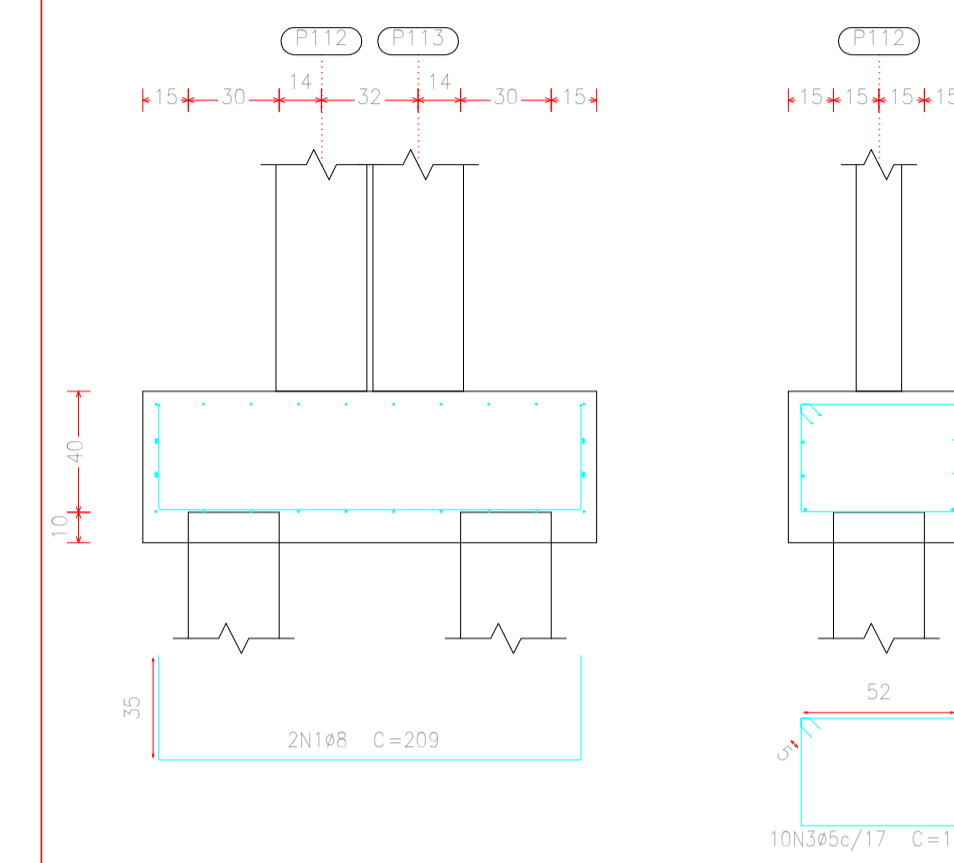


Elemento	Pos.	Diam.	Q.	Dob. (cm)	Ret. (cm)	Dob. (cm)	Comp. (cm)	Total (cm)	CA-50 (kg)	CA-60 (kg)		
(P106-P107) (P108-P109)	1	ø8	3	219	219	657	2,6					
	2	ø8	3	216	216	648	2,6					
	3	ø8	2	294	294	588	2,3					
	4	ø10	4	30	68	98	3,2	2,4				
	5	ø5	3	30	78	78	2,34		2,4	0,4		
	6	ø10	4	30	68	98	3,2	2,4				
	7	ø5	3	30	78	78	2,34		2,4	0,4		
Total+10%:									13,5	0,9		
									(x2):	27,0	1,8	
(P110-P111)	8	ø8	2	35	139	35	209	418	1,7			
	9	ø8	4	30	242	242	968	3,8				
	10	ø5	10	30	84	184	1840	2,9				
	11	ø10	4	30	73	103	412	2,5				
	12	ø12,5	4	30	82	112	448	4,3				
	13	ø5	3	30	78	78	234		0,4			
14	ø10	4	30	73	103	412	2,5					
15	ø12,5	4	30	82	112	448	4,3					
16	ø5	3	30	78	78	234		0,4				
Total+10%:									21,0	4,1		
									(x2):	42,0	8,2	
C.1 [P117 - P118]	17	ø12,5	2	174	174	348	3,4					
	18	ø12,5	2	141	141	282	2,8					
	19	ø8	5	141	141	705	2,8					
Total+10%:									10,6			
									(x2):	21,2		
C.1 [P36 - P21]	20	ø12,5	2	306	306	612	5,9					
	21	ø12,5	2	306	306	612	5,9					
	22	ø8	11	141	141	1551	6,1					
	Total+10%:									19,7		
									(x2):	39,4		
									ø5:	0,0	5,9	
									ø8:	32,5	0,0	
									ø10:	15,9	0,0	
									ø12,5:	29,9	0,0	
									Total:	78,3	5,9	

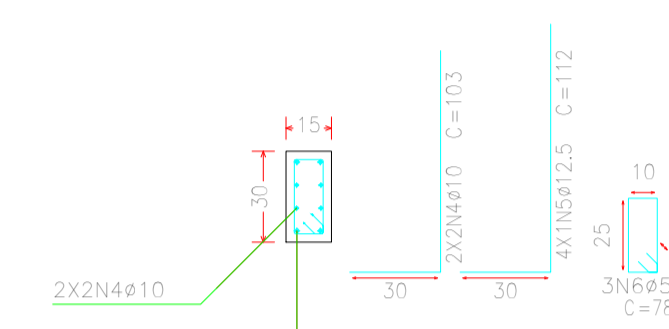
Resumo Aço Fundação	Comp. total (m)	Peso+10% (kg)	Total
CA-50 ø6,3	21,0	6	2025
ø8	1816,1	789	
ø10	1268,5	860	
ø12,5	349,3	370	
CA-60 ø4,2	41,9	5	218
ø5	1235,8	213	
Total			2243

Elemento	Pos.	Diam.	Q.	Dob. (cm)	Ret. (cm)	Dob. (cm)	Comp. (cm)	Total (cm)	CA-50 (kg)	CA-60 (kg)	
(P112-P113)	1	ø8	2	35	139	35	209	418	1,7		
	2	ø8	4	30	242	242	968	3,8			
	3	ø5	10	30	73	103	412	2,5		2,9	
	4	ø10	4	30	73	103	412	2,5			
	5	ø12,5	4	30	82	112	448	4,3			
	6	ø5	3	30	78	78	234		0,4		
	7	ø12,5	4	30	82	112	448	4,3			
	8	ø6,3	3	30	80	80	240	0,6			
Total+10%:									23,7	3,6	
									ø5:	0,0	3,6
									ø6,3:	0,7	0,0
									ø8:	6,1	0,0
									ø10:	2,7	0,0
									ø12,5:	14,2	0,0
									Total:	23,7	3,6

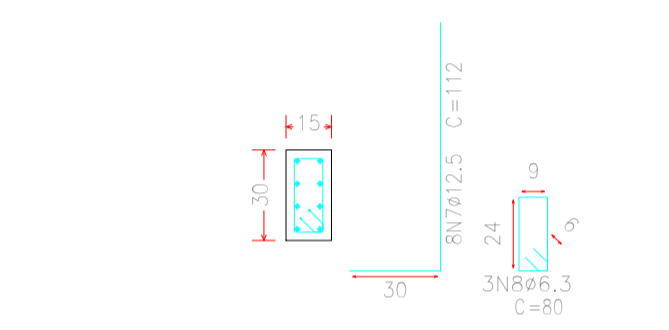
(P112-P113)



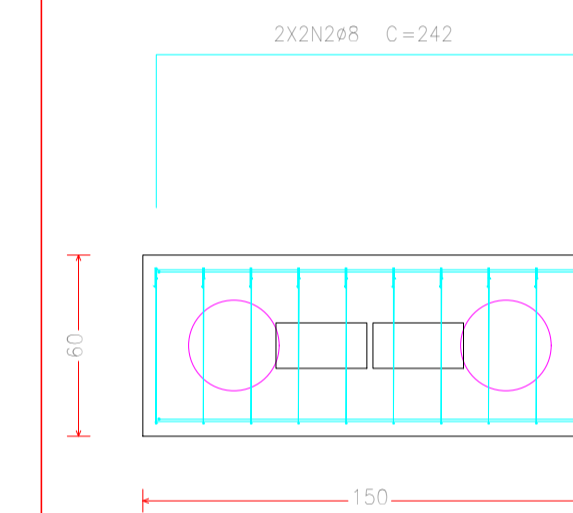
P112



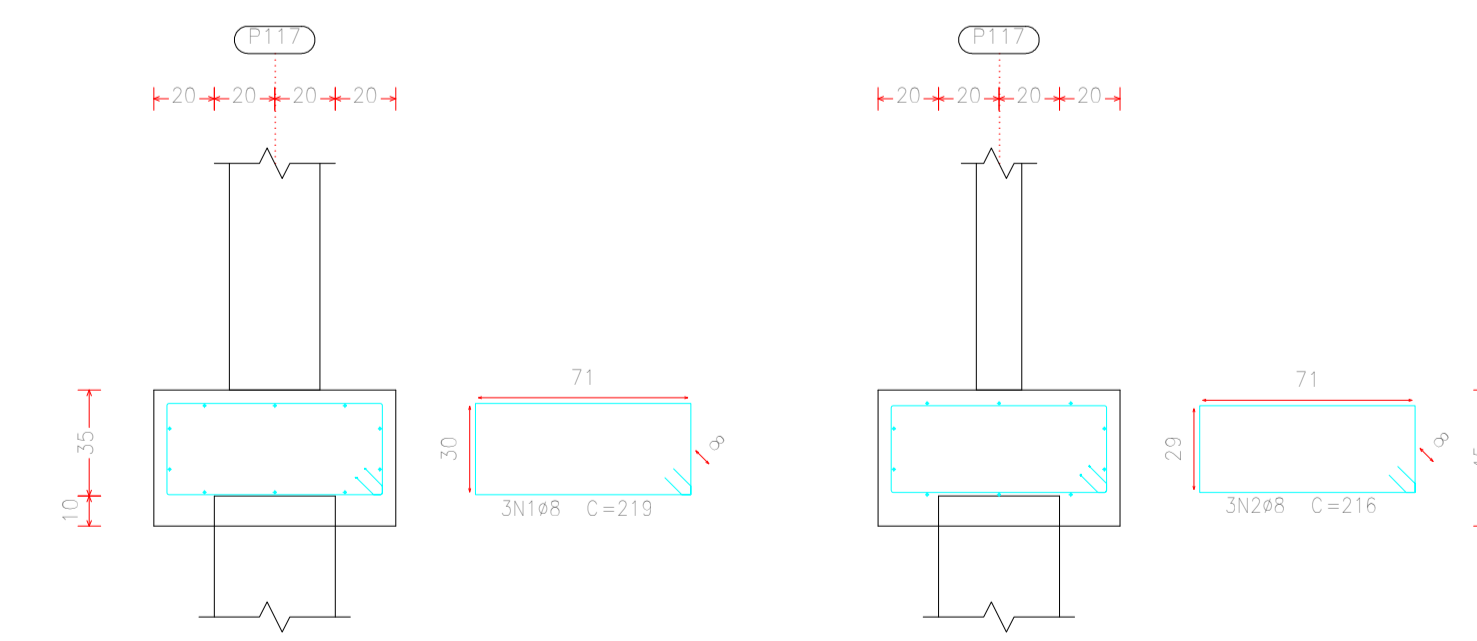
P113



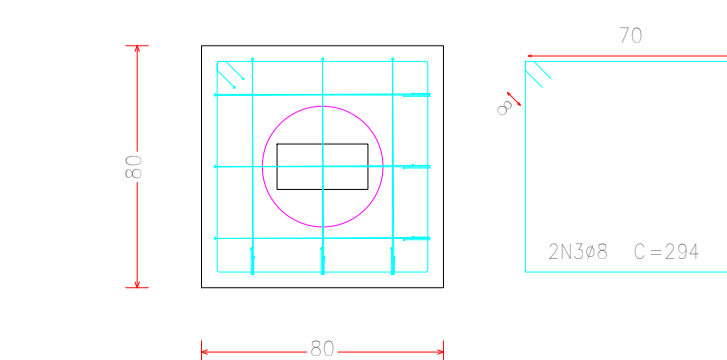
Estacas: e30



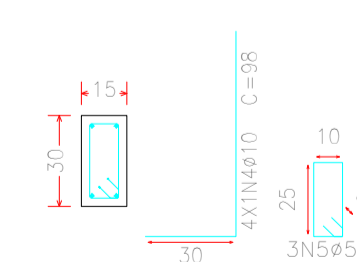
P117



Estacas: E40



P117



Elemento	Pos.	Diam.	Q.	Dob. (cm)	Ret. (cm)	Dob. (cm)	Comp. (cm)	Total (cm)	CA-50 (kg)	CA-60 (kg)	
P117	1	ø8	3	219	219	657	2,6				
	2	ø8	3	216	216	648	2,6				
	3	ø8	2	294	294	588	2,3				
	4	ø10	4	30	68	98	3,2	2,4			
	5	ø5	3	30	78	78	2,34		0,4		
Total+10%:									10,9	0,4	
									ø5:	0,0	0,4
									ø8:	8,3	0,0
									ø10:	2,6	0,0
									Total:	10,9	0,4

Resumo Aço Fundação	Comp. total (m)	Peso+10% (kg)	Total
CA-50 ø6,3	21,0	6	2025
ø8	1816,1	789	
ø10	1268,5	860	
ø12,5	349,3	370	
CA-60 ø4,2	41,9	5	218
ø5	1235,8	213	
Total			2243

EDIFICAÇÃO EDUCACIONAL DE ALVENARIA
É DE INTEIRA RESPONSABILIDADE DO AUTOR DO PROJETO E RESPONSÁVEL TÉCNICO, ATENDER A LEGISLAÇÃO MUNICIPAL E NORMAS BRASILEIRAS VIGENTES.

APROVAÇÕES

PROJETO VINCULADO AO
ALVARÁ Nº _____
PROT. Nº _____

JULIO ANDREI NASCIMENTO
RESPONSÁVEL TÉCNICO | ENGENHEIRO CIVIL - CREA SC 166369-1

OBRA: EDIFICAÇÃO EDUCACIONAL

JULIO ANDREI
ENGENHEIRO CIVIL

FRANCHA
PROJETO FUNDAÇÃO
DETALHE BLOCO FUNDAÇÃO
REFERÊNCIA